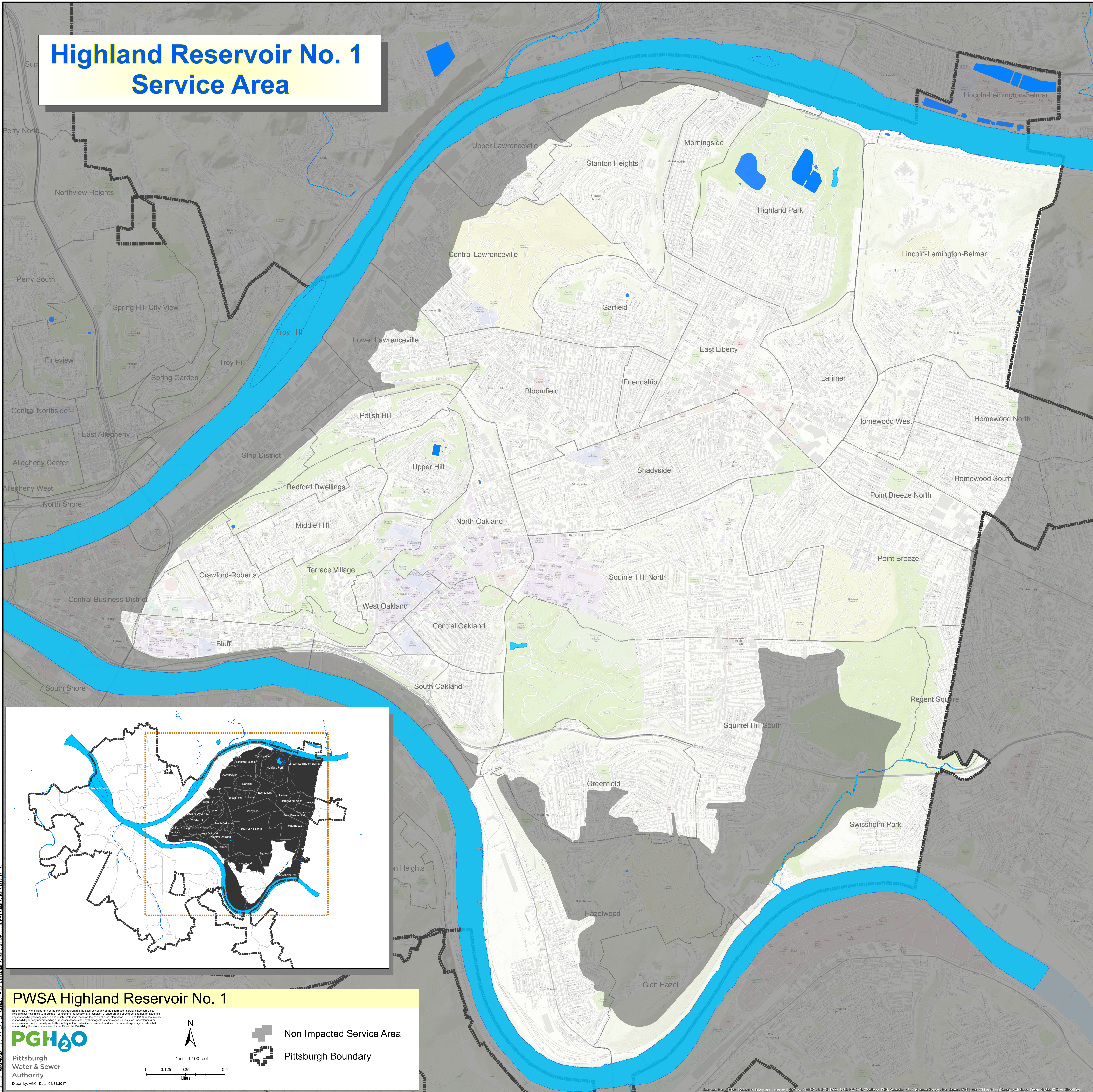


# Highland Reservoir No. 1 Service Area



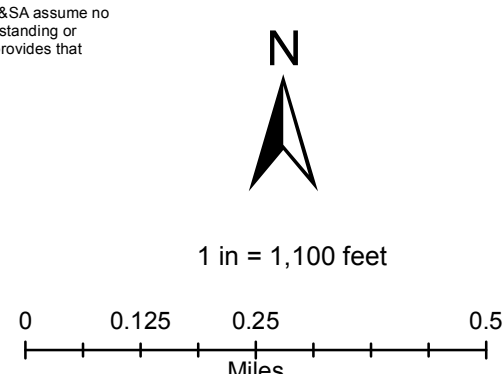
PWSA Highland Reservoir No. 1

Neither the City of Pittsburgh nor the PW&A guarantees the accuracy of any of the information hereby made available, including but not limited to information concerning the location and condition of underground structures, and neither assumes any responsibility for any conclusions or interpretations made on the basis of such information. COP and PW&A assume no responsibility for any understanding or representations made by their agents or employees unless such understanding or representations are expressly set forth in a duly authorized written document, and such document expressly provides that responsibility therefore is assumed by the City or the PW&A.



Pittsburgh  
Water & Sewer  
Authority

Drawn by: AGK Date: 01/31/2017



### Non Impacted Service Area

## Pittsburgh Boundary

Sources: Esri, HERE, DeLorme, Intermap, increment P Corp., GEBCO, USGS, FAO, NPS, NRCAN, GeoBase, IGN, Kadaster NL, Ordnance Survey, Esri Japan, MEI, Esri China (Hong Kong), Swisstopo, Mapbox India, © OpenStreetMap contributors, and the GIS User Community