



Central and Northeast Area Middle School Boundary Study

Committee Recommendation
May 2, 2023

Presented by: Baltimore County Public Schools and Cropper GIS Consulting



About the Central/Northeast Area



- BCPS is in the midst of a \$1.6 billion *Schools for Our Future* capital plan to add capacity to support increasing enrollment and to improve facilities.
- This plan includes two middle school projects in the Central and Northeast regions.
- In spring 2022, the Superintendent initiated a boundary change for 10 schools in the Central and Northeast area middle school community.



About the Central/Northeast Area



The following factors are driving the need to look at attendance boundaries in the area:

- Construction of a new middle school in the Northeast area located on King Avenue, anticipated opening for the 2024-2025 school year and expected to accommodate 1,364 students.
- Renovation and expansion of Pine Grove Middle School, anticipated completion December 2024 with a capacity increase from 1,197 to 1,283.
- Provide capacity relief at Central and Northeast area middle schools.
- Accommodate the ESOL Strategic Plan of returning English Language Learners to their home schools.



Boundary Change Study Process



- Guided by Policy and Rule 1280
- Facilitated by an independent consultant
- Driven by a boundary study committee: principals, teachers, and parents
- Objective examination of data, creation of options, collaboration and deliberation, engagement with greater community, recommendation provided to the Board for approval



Boundary Study Timeline



Meeting attendance was critical, and BCPS followed up prior to each meeting to ensure that committee members could attend.



Baltimore County Public Schools Central and Northeast Area Middle School Boundary Study Timeline www.bcps.org



Boundary Committee Meeting #1	Boundary Committee Meeting #2	Boundary Committee Meeting #3	Boundary Committee Meeting #4	Public Information Sessions		Boundary Committee Meeting #5
Parkville HS Cafeteria	Parkville HS Cafeteria	Parkville HS Cafeteria	Parkville HS Cafeteria	Parkville HS Cafeteria	GW Carver Center Auditorium	Parkville HS Cafeteria
Thursday January 12, 2023 6:00 – 8:00 p.m. * Snow Date * Friday January 13, 2023	Wednesday January 25, 2023 6:00 – 8:00 p.m. * Snow Date * Thursday January 26, 2023	Thursday February 9, 2023 6:00 – 8:00 p.m. * Snow Date * Friday February 10, 2023	Wednesday February 22, 2023 6:00 – 8:00 p.m. * Snow Date * Thursday February 23, 2023	Wednesday March 8, 2023 7:00 – 8:00 p.m.	Thursday March 9, 2023 7:00 – 8:00 p.m.	Wednesday March 29, 2023 6:00 – 8:00 p.m.

Board of Education Recommendation Tuesday May 2, 2023 6:30 p.m. Greenwood Building E	Board of Education Public Hearing Wednesday May 17, 2023 6:30 p.m. Parkville HS Auditorium	Board of Education Decision Tuesday June 13, 2023 6:30 p.m. Greenwood Building E
---	---	---

Committee meetings 1-4 will be used to develop draft options to present at the public information sessions.

To encourage public engagement, two public information sessions will be held in different regions of the study area. Identical information will be provided at each session. An online survey will be conducted beginning on Wednesday, March 8 through March 19 to receive feedback from the public on draft options.

Committee meeting 5 will be used to review public comment and determine a boundary change to recommend to the Board.

	Boundary committee meetings; general public may attend to observe
	Community meetings; open to general public, attendance and participation encouraged
	General meetings of the Board of Education (BOE); general public welcome to attend

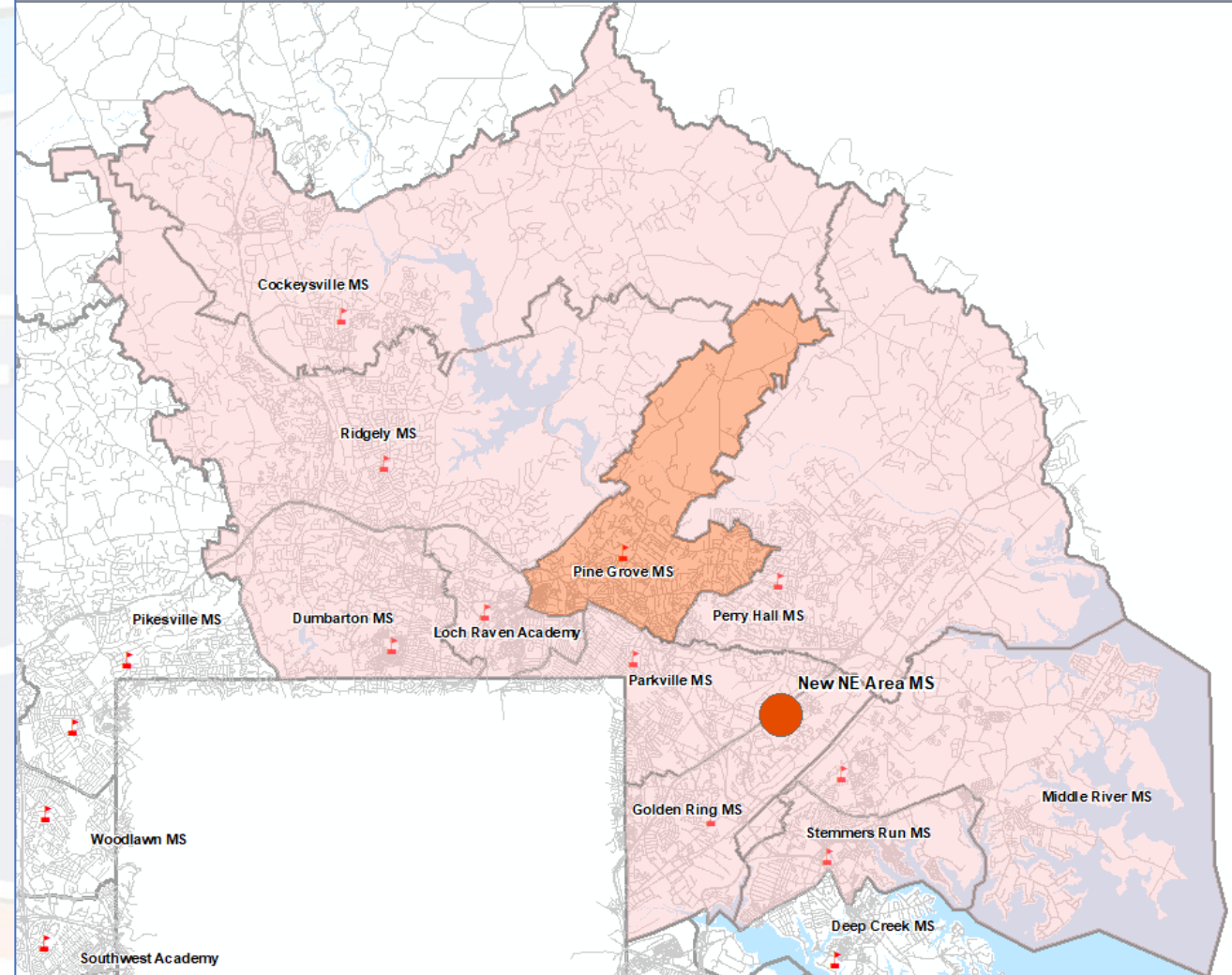
* Please note snow dates for Committee Meetings 1 through 4

Central/Northeast Area Middle Schools



Anticipated Implementation:
Fall 2024 & Fall 2025

Project Schools (2)	Participating Schools (9)
New NE MS Pine Grove MS	Cockeysville MS Dumbarton MS Golden Ring MS Loch Raven MS Middle River MS Parkville MS Perry Hall MS Ridgely MS Stemmers Run MS



Boundary Study Objective



The community-based comprehensive boundary study is tasked with meeting the following key objectives:

- Establish an attendance area for the new Northeast Area middle school
- Expand the attendance area for Pine Grove Middle School and its addition

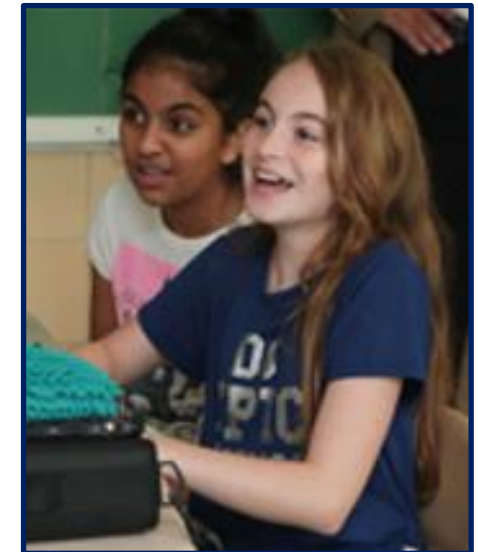


Boundary Study Considerations: Rule 1280



Primary considerations:

- Efficient use of capacity in affected schools
- Maintaining or increasing the diversity among schools to reflect the diversity of the region and the school system



Boundary Study Considerations: Rule 1280



Secondary considerations:

- Maintaining the continuity of neighborhoods
- The impact of transportation and pedestrian patterns on students
- Minimizing the number of times any individual students are reassigned
- Long-term enrollment and capacity trends and future capital plans
- Location of feeder school boundaries and continuity of feeder patterns
- Additional considerations:
 - Use of geographic features, such as railroads, creeks, and major highways
 - Support ESOL strategic plan objective of returning students from ESOL centers to home schools

Boundary Study Process



The Boundary Study Committee

- Represents each school community - 41 Members (31 voting members)
 - 10 Principals (non-voting)
 - 10 Teacher/Staff representatives
 - 20 Parents (2 from each school)
 - Area Educational Advisory Council Representative
- Suspends parochial interests
- Availability to attend all meetings
- Representative of the community
- Meets seven (7) times from January – March
- Collaborates exclusively with each other (public can observe)
- Presents recommendation to the BOE via Chief of Schools



Boundary Study Process



Public Participation and Input

- Letters were sent to all families in Fall 2022 regarding the boundary change process followed by additional outreach from schools throughout the process.
- The public was invited to attend all committee meetings as observers.
- All meetings were live-streamed on the BCPS Web site. Video recordings of committee meetings were converted to YouTube that can be translated to other languages in closed captioning.
- All information provided to the committee is available on the BCPS Web site.

The poster is titled "BALTIMORE COUNTY PUBLIC SCHOOLS CENTRAL AND NORTHEAST AREA MIDDLE SCHOOL BOUNDARY STUDY". It features a row of school logos below the title. The main text reads: "The Community Boundary Study Begins January 2023 – Get Involved!". Below this, it lists "Participating Schools: Cockeysville Middle School, Dumbarton Middle School, Golden Ring Middle School, Loch Raven Academy, Middle River Middle School, Parkville Middle School, Perry Hall Middle School, Pine Grove Middle School, Ridgely Middle School, and Stemmers Run Middle School". It then details the "Public Information Session" on Wednesday, March 8, 2023, and Thursday, March 9, 2023, both from 7-8 p.m. at Parkville High School and George Washington Carver High School. It also lists "Committee Meetings at Parkville High School, 6 – 8 p.m.:" for Thursday, January 12, 2023, and Wednesday, January 25, 2023, with snow dates. The "Board of Education Dates" include a recommendation on Tuesday, May 2, 2023, and a public hearing on Wednesday, May 17, 2023, both at 6:30 p.m. at Parkville High School. The final "Board Decision" is on Tuesday, June 13, 2023, at 6:30 p.m. at Greenwood Building E. A QR code is provided for more information, with a note to scan it for more information. A small disclaimer at the bottom states: "Should you require translation of any documents related to this boundary change process please contact your neighborhood school for assistance. If you require an interpreter at an upcoming boundary study meeting, please notify your neighborhood school at least 72 hours before the meeting."

BALTIMORE COUNTY PUBLIC SCHOOLS
CENTRAL AND NORTHEAST AREA
MIDDLE SCHOOL BOUNDARY STUDY

The Community Boundary Study Begins January 2023 – Get Involved!

Participating Schools: Cockeysville Middle School, Dumbarton Middle School, Golden Ring Middle School, Loch Raven Academy, Middle River Middle School, Parkville Middle School, Perry Hall Middle School, Pine Grove Middle School, Ridgely Middle School, and Stemmers Run Middle School

Public Information Session:
Wednesday, March 8, 2023, 7 – 8 p.m.
Parkville High School
Thursday, March 9, 2023, 7 – 8 p.m.
George Washington Carver High School

Committee Meetings at Parkville High School, 6 – 8 p.m.:
Thursday, January 12, 2023
Snow Date: Friday, January 13, 2023
Wednesday, January 25, 2023
Snow Date: Thursday, January 26, 2023
Thursday, February 9, 2023
Snow Date: Friday, February 10, 2023
Wednesday, February 22, 2023
Snow Date: Thursday, February 23, 2023
Wednesday, March 29, 2023

Board of Education Dates:
Recommendation: Tuesday, May 2, 2023, 6:30 p.m.
Greenwood Building E
Board Public Hearing: Wednesday, May 17, 2023, 6:30 p.m.
Parkville High School, Auditorium

Board Decision:
Tuesday, June 13, 2023, 6:30 p.m.
Greenwood Building E

Scan QR code for more information

Should you require translation of any documents related to this boundary change process please contact your neighborhood school for assistance. If you require an interpreter at an upcoming boundary study meeting, please notify your neighborhood school at least 72 hours before the meeting.

Boundary Study Process



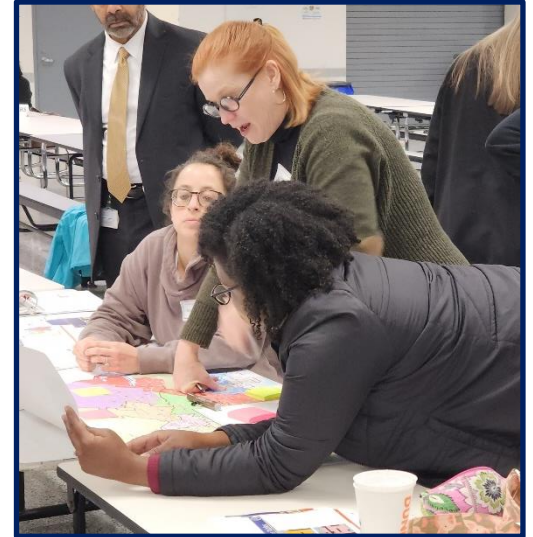
Public Participation and Input

- Public was invited to provide input throughout the process via e-mail, online comment form, and survey.
- Translators were available at the public information session upon request.
- Committee held two public information meetings.
- Online survey and survey instructions were translated to multiple languages.
- 2,731 total respondents participated in the online survey. The survey was provided in English, Arabic, Chinese, Spanish, Nepali, and Urdu.

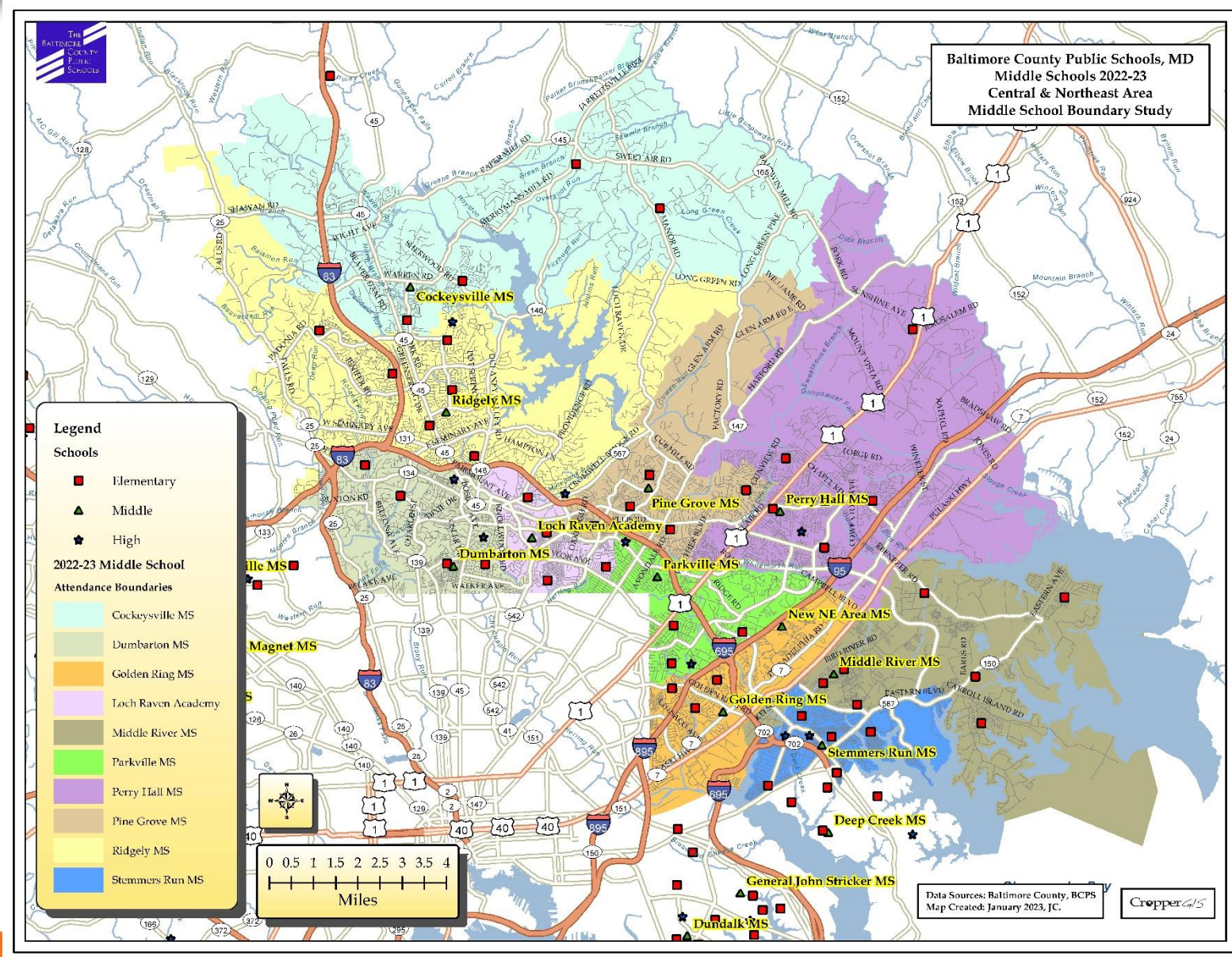


Committee Considerations

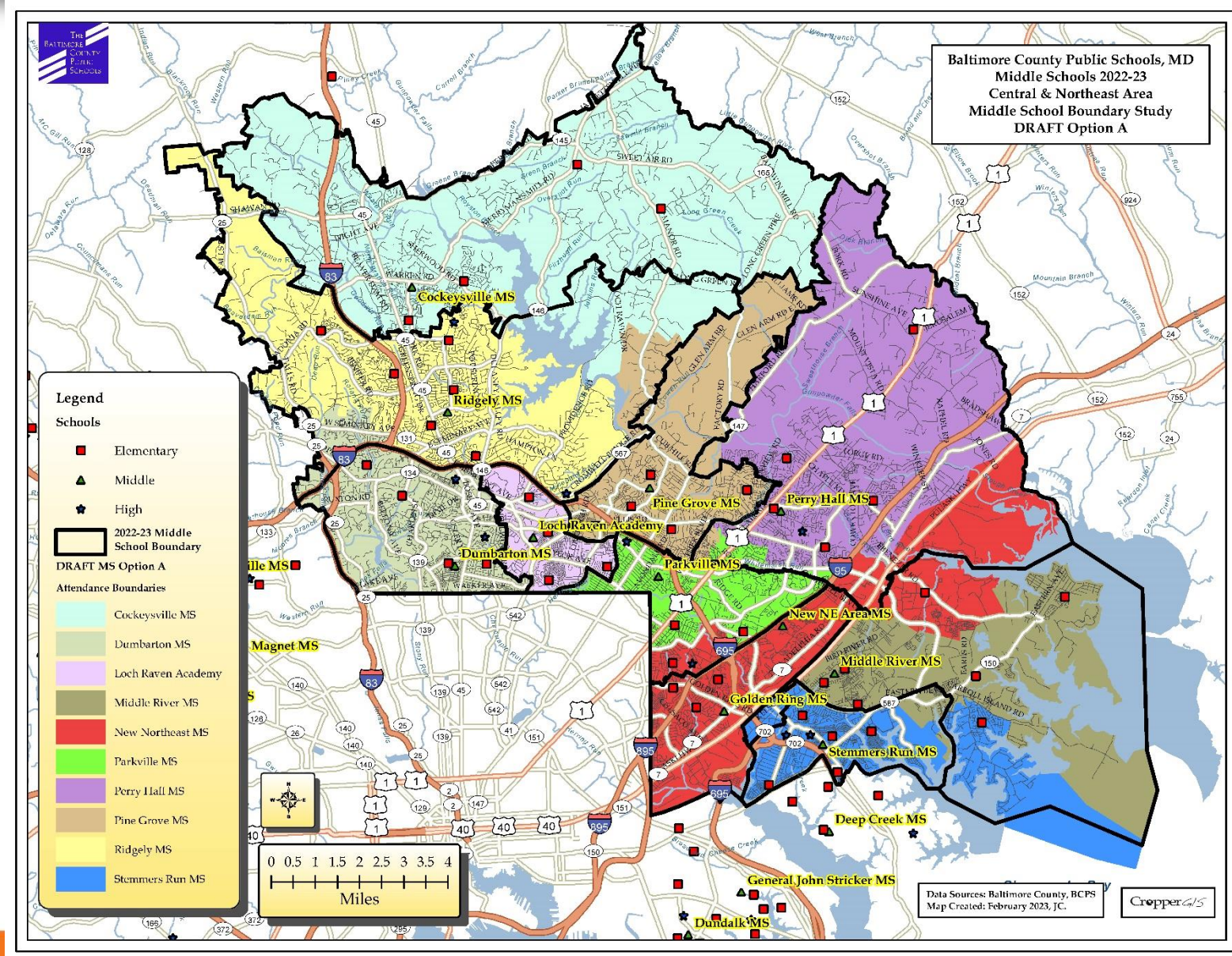
- The committee considered nine (9) total options.
- Reviewed and discussed, as a group, all materials and public e-mails with a focus on the boundary study considerations.
 - Recognized that DRAFT Option E satisfied the most boundary study considerations.
- Four (4) options were presented at the public information session and via surveys.
- Thoughtfully considered input from the public information session and the survey.



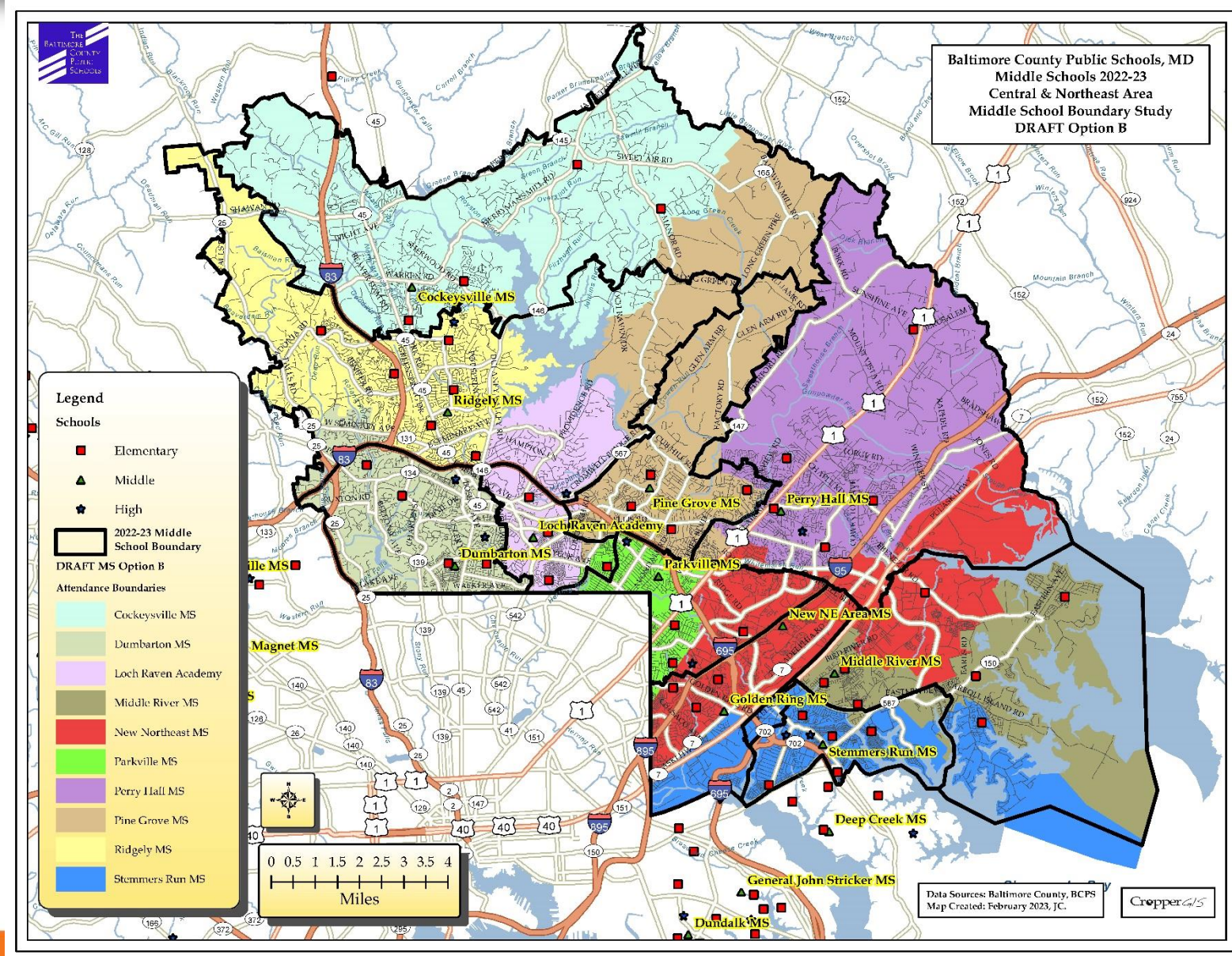
Current Middle School Zones



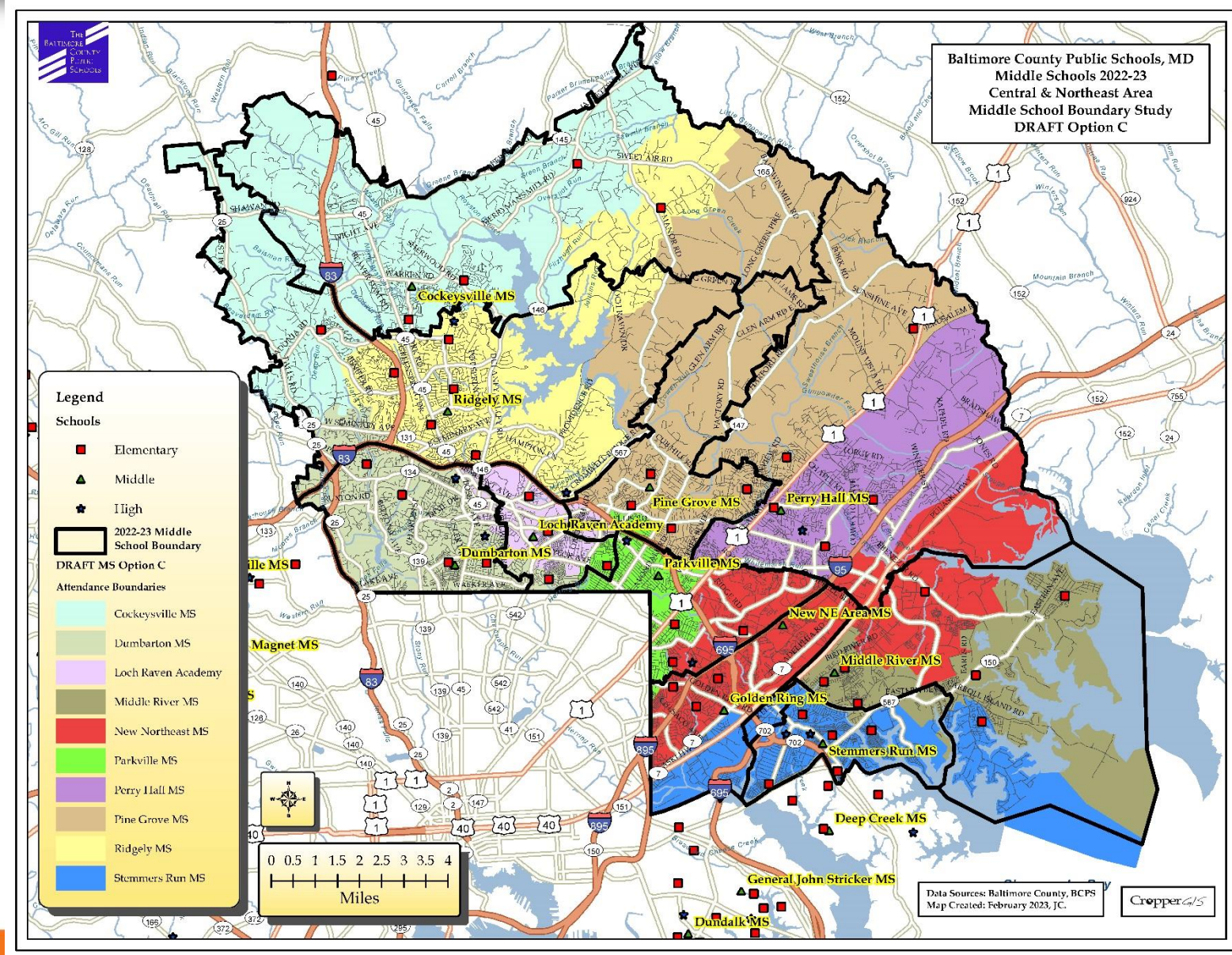
Option A



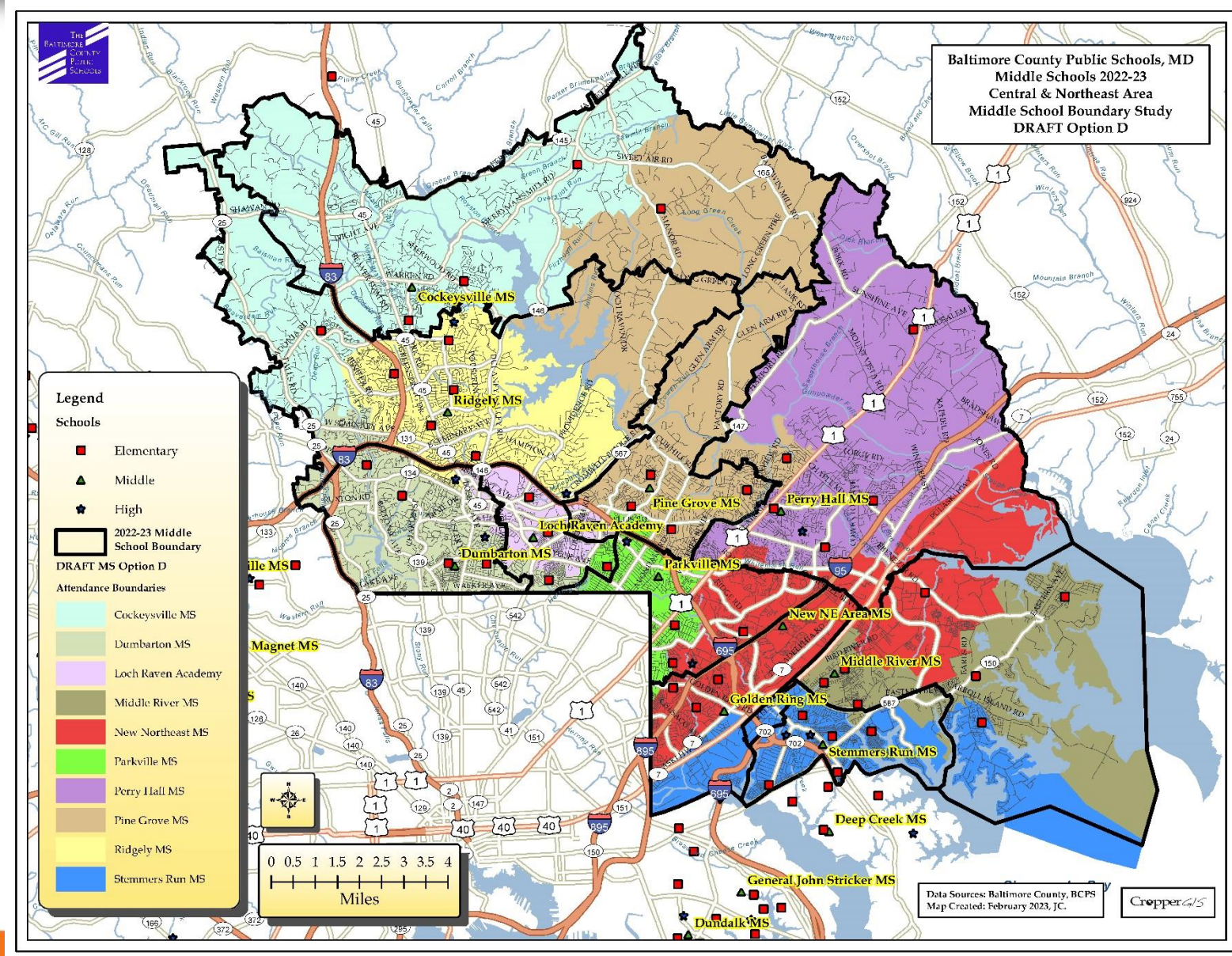
Option B



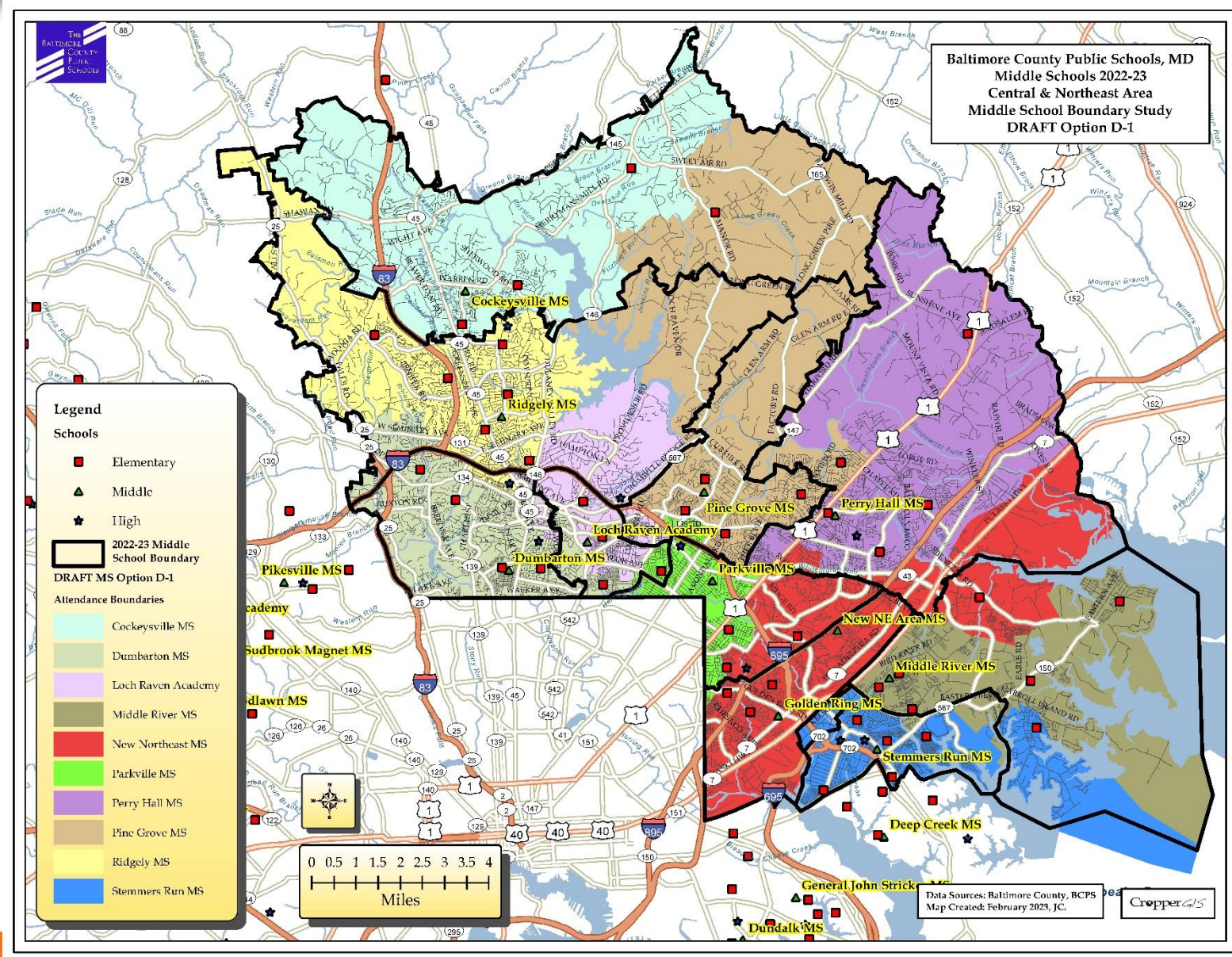
Option C



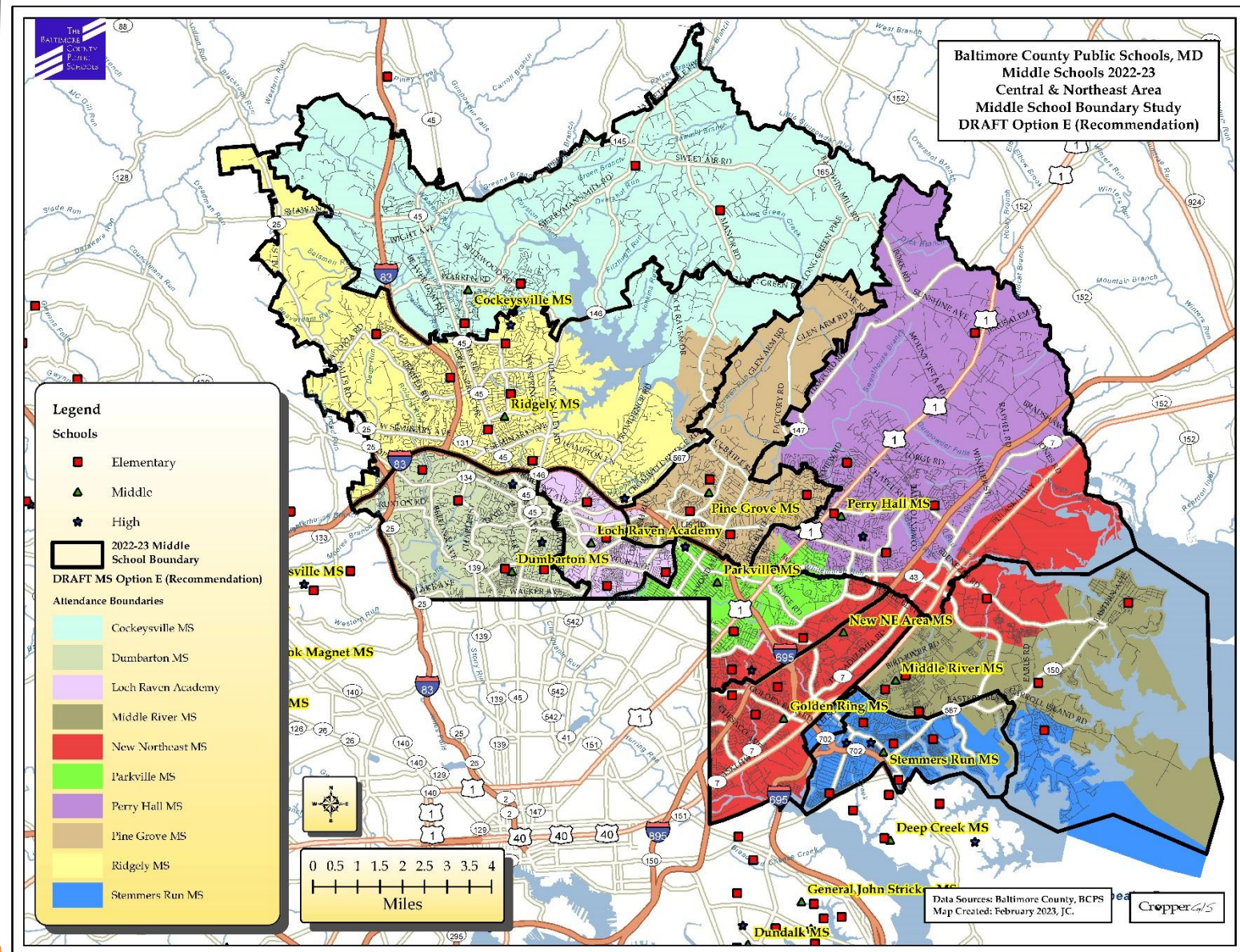
Option D



Option D-1



Option E (Recommendation)

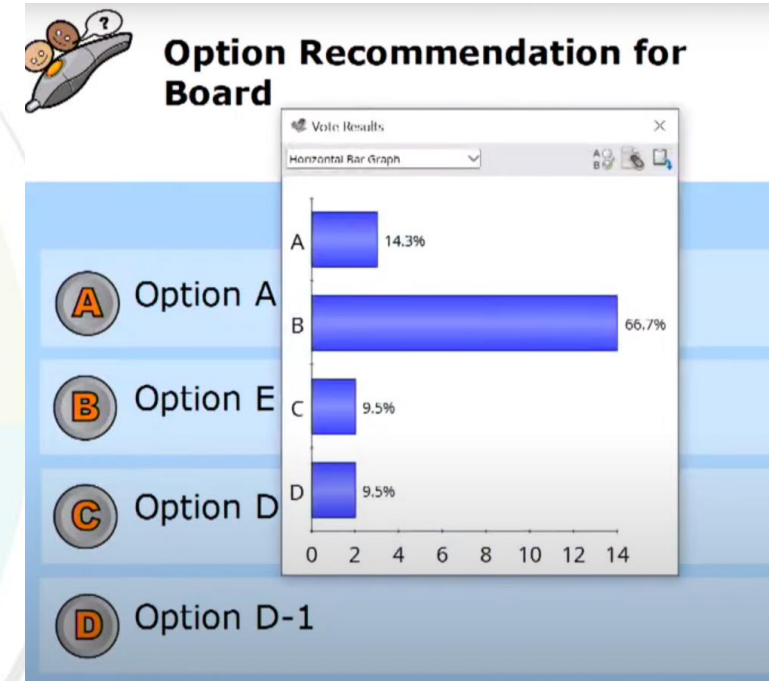


Boundary Study Outcome

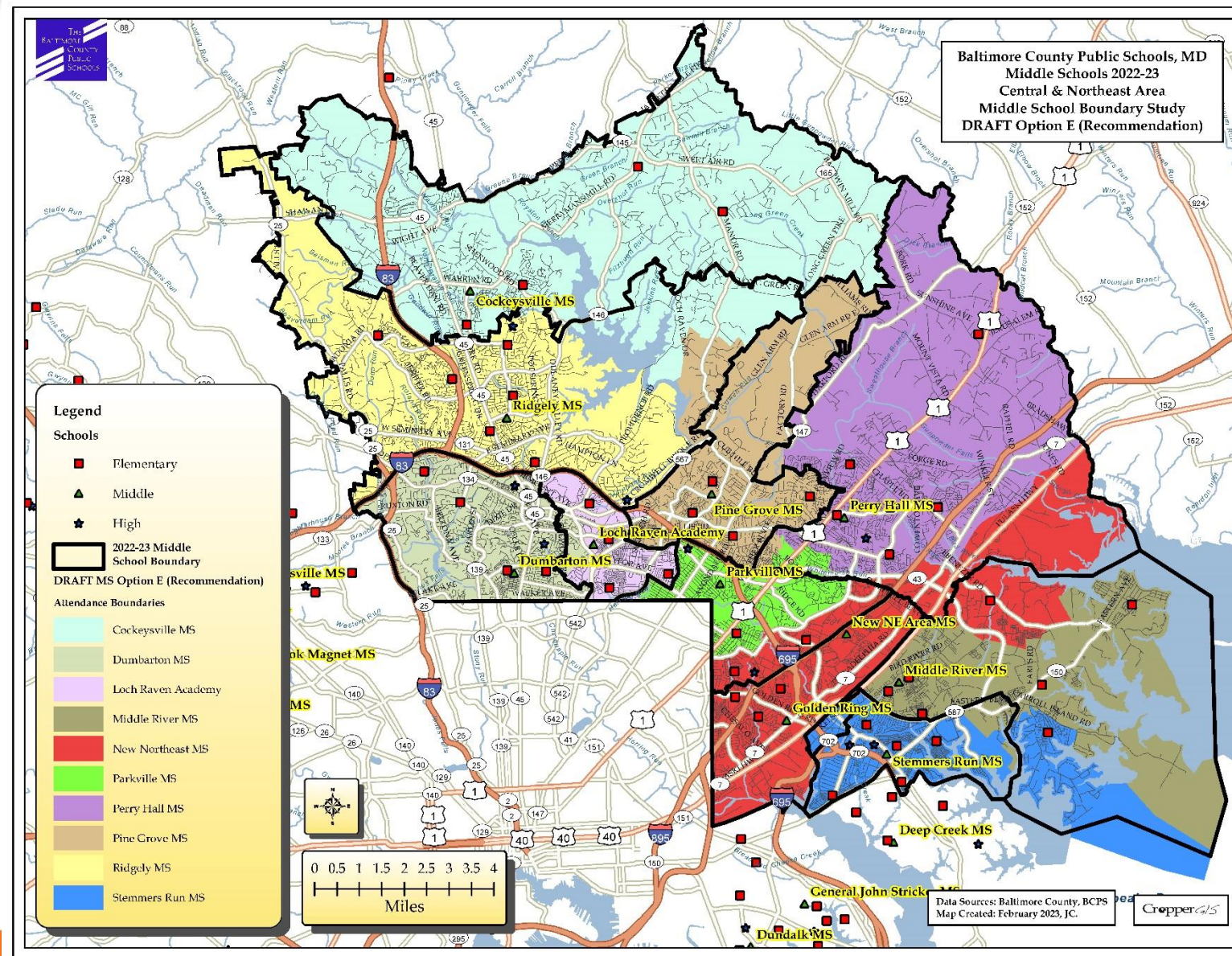


Committee Recommendation: Option E

- Voting members that were present recommended Option E at the March 29, 2023, meeting.
- Of the 21 voting committee members in attendance:
 - Option A – 14.3% of votes
 - Option D – 9.5% of votes
 - Option D-1 – 9.5% of votes
 - Option E – 66.7% of votes
 - Committee felt that the recommended option met the boundary study objectives the best, as a whole.



Committee Recommendation: Option E



Boundary Study Outcome

Recommended Option E – Enrollment Utilization

Middle School	Current State Rated Capacity (SRC)	Option State Rated Capacity (SRC)	6-8th Grade Enrollment Post ESOL Moves	6-8th Grade Utilization Post ESOL Moves		Option E (Recommendation) Estimated Enrollment ²	Option E (Recommendation) Estimated Utilization	
				+ / -	%		+ / -	%
Cockeysville MS	1059	1059	892	-167	84%	954	-105	90%
Dumbarton MS	1115	1115	883	-232	79%	932	-183	84%
Golden Ring MS	844	0	933	89	111%	Repurposed	Repurposed	Repurposed
Loch Raven Academy	943	943	830	-113	88%	796	-147	84%
Middle River MS	1007	1007	1017	10	101%	869	-138	86%
Parkville MS	1089	1089	1020	-69	94%	950	-139	87%
Perry Hall MS	1643	1643	1782	139	108%	1459	-184	89%
Pine Grove MS	1197	1283	941	-256	79%	1109	-174	86%
Ridgely MS	1070	1070	1076	6	101%	998	-72	93%
Stemmers Run MS	1154	1154	868	-286	75%	967	-187	84%
New Northeast MS	0	1364	0	0	0%	1208	-156	89%
Total	11,121	11,727	10,242	-879	92%	10,242	-1,485	87%

Counts based on Preliminary September 30, 2022 Enrollment

² The estimated enrollment is calculated by adding the total 6-8th grade Live and Attend In students within each new DRAFT option zone, plus the 6-8th students that "Live Out and Attend In" a 2022-23 school, plus the total 6-8th students that were "Unmatched" for a 2022-23 school, plus the total number of 6-8th grade ESOL students moving back to their home school from Dumbarton MS & Dundalk MS within each new DRAFT option zone.

Boundary Study Outcome



Recommended Option E – Demographics

Middle School	2022-23 6-8th Grade Current Demographic Percentage ³									Middle School	Option E (Recommendation) Demographic Percentage ³								
	American Indian	Asian	Black	Hawaiian Pacific Is.	White	Multi Racial	Hispanic	FARMS	ELL		American Indian	Asian	Black	Hawaiian Pacific Is.	White	Multi Racial	Hispanic	FARMS	ELL
Cockeysville MS		9%	23%		41%	5%	21%	42%	7%	Cockeysville MS		9%	23%		40%		24%	43%	12%
Dumbarton MS		9%	16%		52%	6%	17%	32%	20%	Dumbarton MS		7%	22%		57%	7%	7%	27%	
Golden Ring MS		6%	60%		16%		13%	63%		Golden Ring MS									
Loch Raven Academy			66%		18%		8%	60%		Loch Raven Academy			61%		19%		13%	60%	8%
Middle River MS			46%		30%	7%	14%	62%		Middle River MS			45%		28%	7%	18%	62%	8%
Parkville MS		7%	43%		35%	7%	8%	55%		Parkville MS		9%	38%		38%	6%	8%	52%	
Perry Hall MS		18%	28%		43%	5%		40%		Perry Hall MS		20%	24%		46%			36%	
Pine Grove MS		7%	42%		37%	6%	8%	56%		Pine Grove MS		7%	44%		35%	6%	8%	59%	
Ridgely MS		17%	11%		59%	6%	7%	21%		Ridgely MS		18%	9%		59%	6%	8%	20%	
Stemmers Run MS			36%		40%	8%	13%	68%		Stemmers Run MS			36%		38%	8%	15%	66%	7%
New Northeast MS										New Northeast MS		7%	56%		18%	5%	13%	63%	7%
Total		9%	35%		39%	6%	11%	48%		Total		9%	35%		38%	6%	11%	48%	6%

Counts based on Preliminary September 30, 2022 Enrollment

³ The Free-Reduced Lunch, ELL, and Demographic counts are based on the total headcount. Totals less than 5% are redacted.

Boundary Study Outcome



Recommended Option E – Impacts

Student Impact Estimates	
Option	Total 6-8 Live and Attend In Students Impacted
Option E (Recommendation)	1,625
*Counts based on 2022-23 Student Enrollment.	

- The left column highlights the current school boundary, and the middle column highlights what school the boundary is changing to.
- The right column represents the total 6-8 Live and Attend In students for a given area.
- **Green** - no boundary change; therefore, no students are impacted
- **Tan** - students impacted by a boundary change
- Total 6-8 Live and Attend In students for this option shown in the table above is a sum of all the tan colored rows from the table to the right.

2022-23 MS Boundary	MS Option E Boundary (Recommendation)	Total 6-8 Live and Attend In Students
Cockeysville MS	Cockeysville MS	797
Dumbarton MS	Dumbarton MS	865
Golden Ring MS	New Northeast MS	811
Loch Raven Academy	Dumbarton MS	47
Loch Raven Academy	Loch Raven Academy	569
Middle River MS	Middle River MS	717
Middle River MS	New Northeast MS	48
Middle River MS	Stemmers Run MS	113
Parkville MS	Loch Raven Academy	1
Parkville MS	New Northeast MS	189
Parkville MS	Parkville MS	577
Perry Hall MS	New Northeast MS	32
Perry Hall MS	Parkville MS	119
Perry Hall MS	Perry Hall MS	1415
Perry Hall MS	Pine Grove MS	163
Pine Grove MS	Loch Raven Academy	12
Pine Grove MS	Pine Grove MS	876
Ridgely MS	Cockeysville MS	59
Ridgely MS	Pine Grove MS	15
Ridgely MS	Ridgely MS	967
Stemmers Run MS	Middle River MS	16
Stemmers Run MS	Stemmers Run MS	746

Boundary Study Outcome



Recommended Option E – Feeder Patterns

Option	ES to MS Splits	MS to H Splits
Current	27	10
Option E (Recommendation)	16	13

2022-23 MS Boundary	2022-23 HS Boundary	MS Attendance
Cockeysville MS	Dulaney HS	97%
Cockeysville MS	Loch Raven HS	3%
Dumbarton MS	Towson HS	100%
Golden Ring MS	Overlea HS	100%
Loch Raven Academy	Loch Raven HS	31%
Loch Raven Academy	Parkville HS	57%
Loch Raven Academy	Towson HS	12%
Middle River MS	Chesapeake HS	9%
Middle River MS	Kenwood HS	78%
Middle River MS	Perry Hall HS	12%
Parkville MS	Overlea HS	47%
Parkville MS	Parkville HS	53%
Perry Hall MS	Perry Hall HS	100%
Pine Grove MS	Loch Raven HS	50%
Pine Grove MS	Parkville HS	27%
Pine Grove MS	Perry Hall HS	23%
Ridgely MS	Dulaney HS	69%
Ridgely MS	Loch Raven HS	10%
Ridgely MS	Towson HS	21%
Stemmers Run MS	Kenwood HS	100%

MS Option E Boundary (Recommendation)	2022-23 HS Boundary	MS Attendance
Cockeysville MS	Dulaney HS	96%
Cockeysville MS	Loch Raven HS	4%
Dumbarton MS	Towson HS	100%
Loch Raven Academy	Loch Raven HS	35%
Loch Raven Academy	Parkville HS	61%
Loch Raven Academy	Towson HS	4%
Middle River MS	Chesapeake HS	4%
Middle River MS	Kenwood HS	88%
Middle River MS	Perry Hall HS	8%
New Northeast MS	Overlea HS	93%
New Northeast MS	Perry Hall HS	7%
Parkville MS	Overlea HS	25%
Parkville MS	Parkville HS	58%
Parkville MS	Perry Hall HS	17%
Perry Hall MS	Perry Hall HS	100%
Pine Grove MS	Loch Raven HS	43%
Pine Grove MS	Parkville HS	23%
Pine Grove MS	Perry Hall HS	35%
Ridgely MS	Dulaney HS	69%
Ridgely MS	Loch Raven HS	8%
Ridgely MS	Towson HS	23%
Stemmers Run MS	Chesapeake HS	6%
Stemmers Run MS	Kenwood HS	94%

Boundary Study Outcome



Recommended Option E – Walk Zones

Total 6-8 Live and Attend In Living Within Walk Zones	
Current Walk Zones	1,946
Option E (Recommendation)	2,068
*Counts based on Preliminary September 30, 2022 Enrollment. The Current Walk zone counts show the 6-8 Live and Attend In students that live within the existing walk zones.	

Boundary Process

BOE Public Hearing:

Wednesday, May 17, 2023, at 6:30 p.m.
at Parkville High School Auditorium

BOE Decision Vote:

Tuesday, June 13, 2023, at 6:30 p.m.
Greenwood Campus, Building E



Thank You!

