

The Health Collaborative Situational Dashboard*

July 15, 2020

*This information is provided "as-is." The Health Collaborative and its partners make no representation or warranty, express or implied, including without limitation any warranties of merchantability, fitness for a particular purposes, non-infringement, or warranties as to the quality, accuracy, or completeness of the information. Any use or reliance on this information is at the user's sole risk.

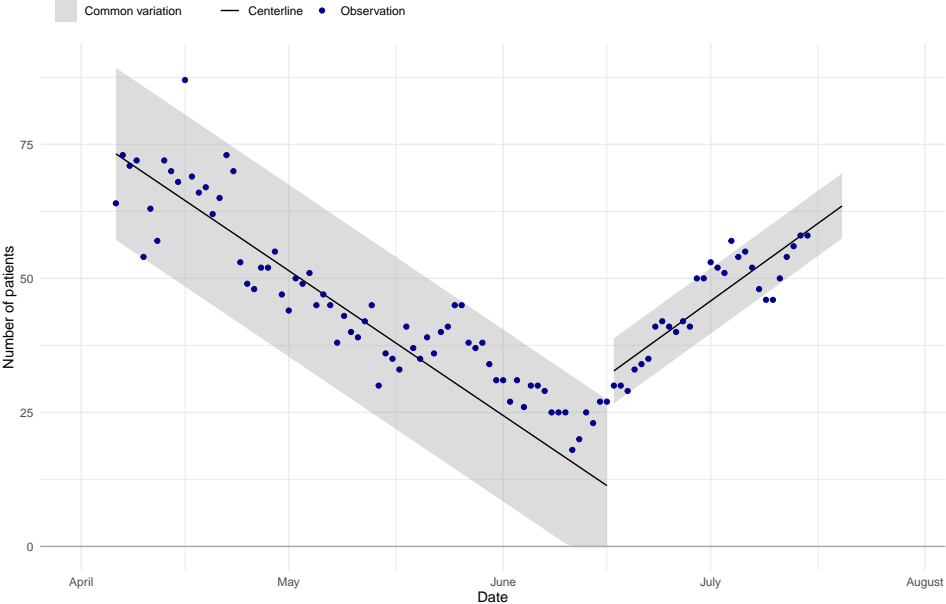
Hospital demand

Forecast demand

Mobility

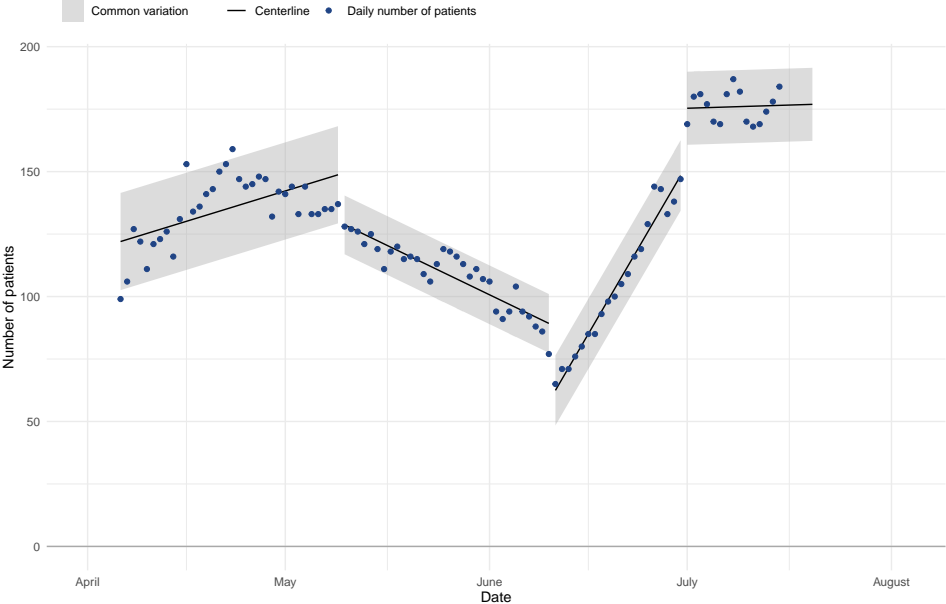
Hospital demand

Number of positive Covid-19 patients in Region 6 ICUs, I-Chart



Source: OHA Hospital Resource Tracker on July 15th

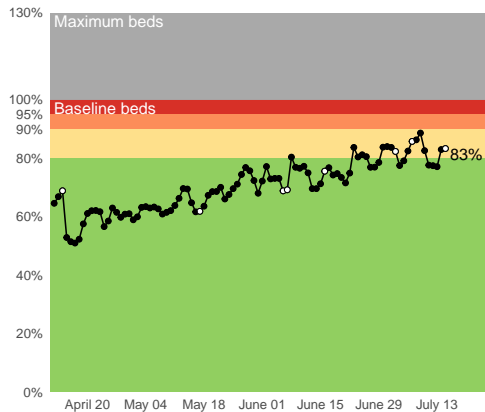
Number of positive Covid-19 patients in Region 6 hospitals, I-Chart



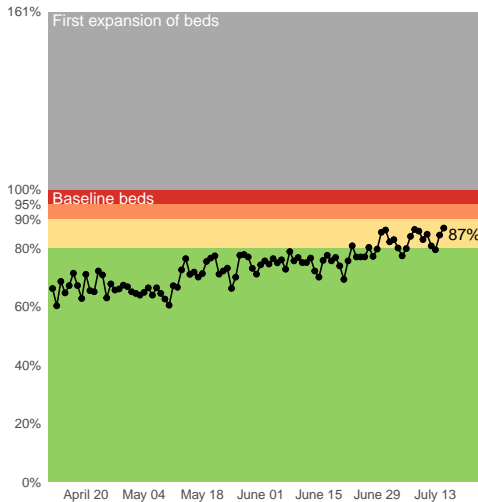
Source: OHA Hospital Resource Tracker on July 15th

Percentage of beds in use in Southwestern Ohio hospitals

Adult medical–surgical beds



Adult critical care beds

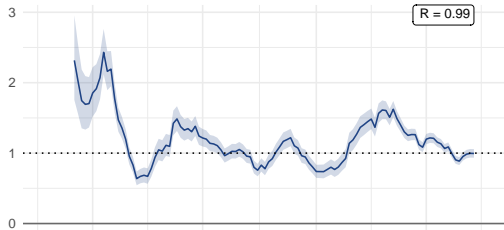


Source: SurgeNet data for Region 6 hospitals at 18:07 on July 15, 2020. Open circle indicates data for less than 90% of beds in SurgeNet.

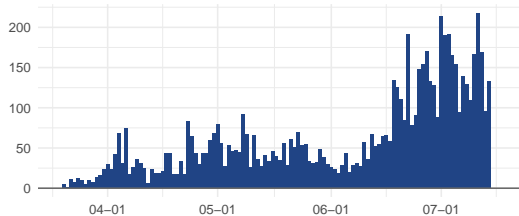
Forecast demand

Hamilton County, Ohio

Estimated R

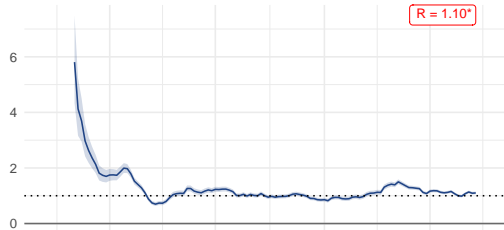


Daily incidence

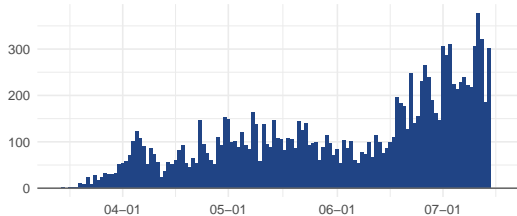


14 county area

Estimated R



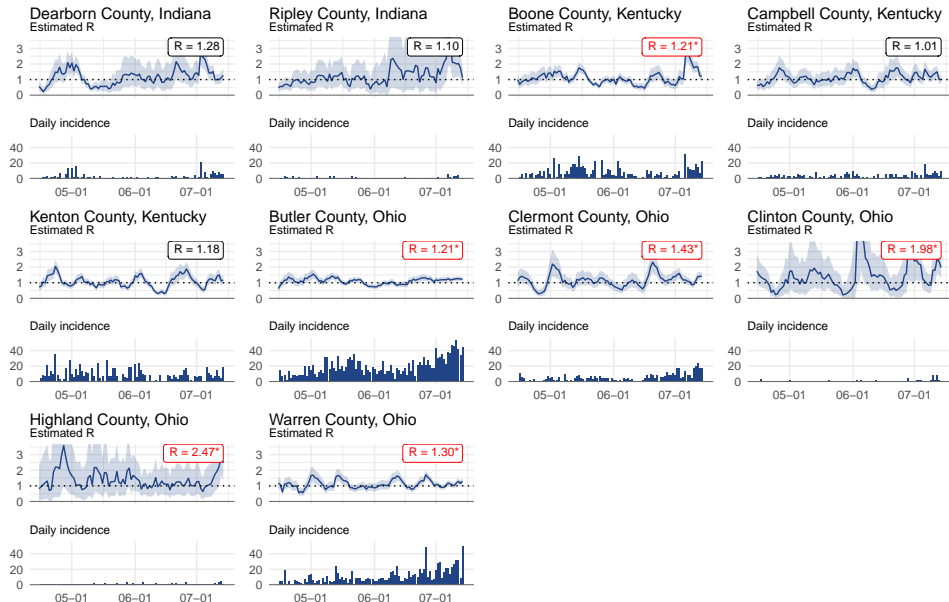
Daily incidence



Mean serial interval (SI): 4.7 and standard deviation of SI: 2.9

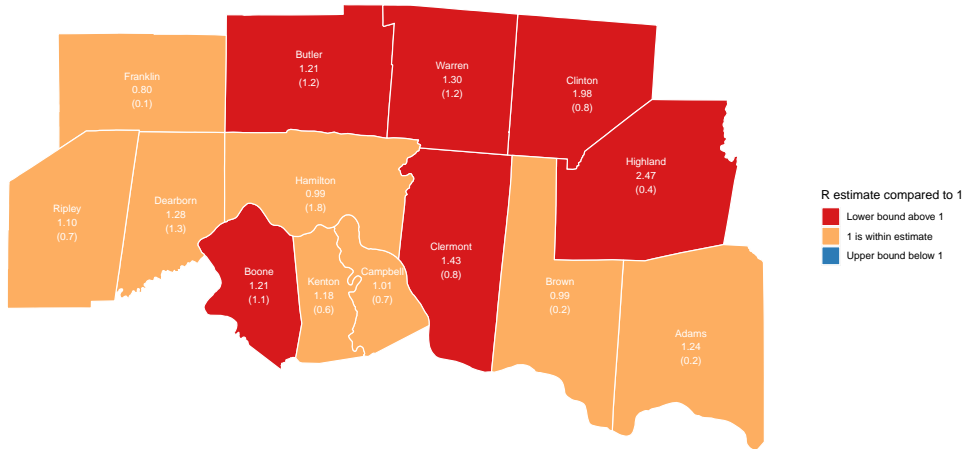
Data from The New York Times, based on reports from state and local health agencies. Pulled on: 2020-07-15. <https://www.nytimes.com/interactive/2020/us/coronavirus-us-cases.html>

Counties where the current R estimate is greater than 1



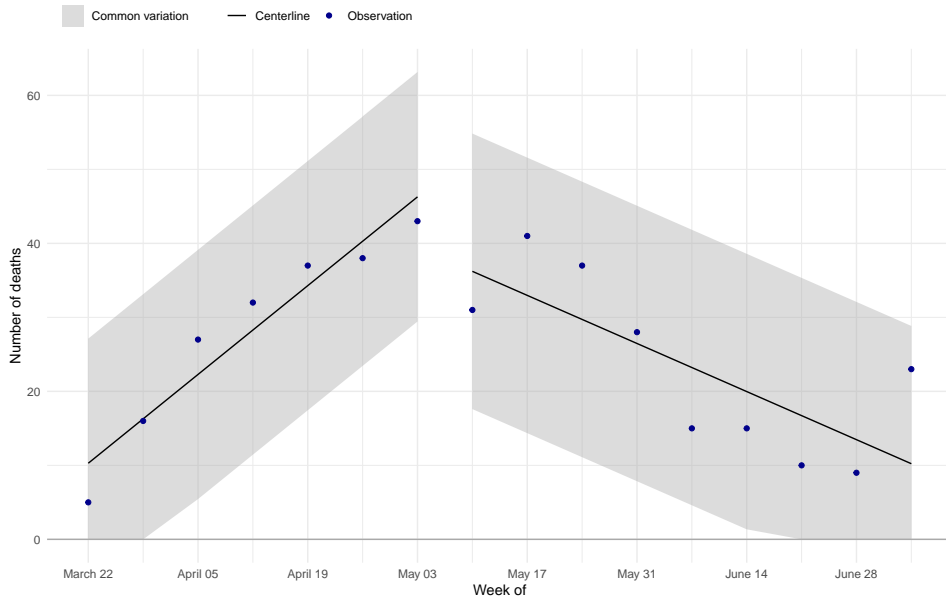
Red R value and * indicate that lower bound is greater than 1. Data from The New York Times, based on reports from state and local health agencies. Pulled on: 2020-07-15.
<https://www.nytimes.com/interactive/2020/us/coronavirus-us-cases.html>

Map of R estimates for 14 county area with average daily number of cases per 10,000 population in the last week
Estimated R value is based on the rate of change in incidence cases and should be considered along with the count



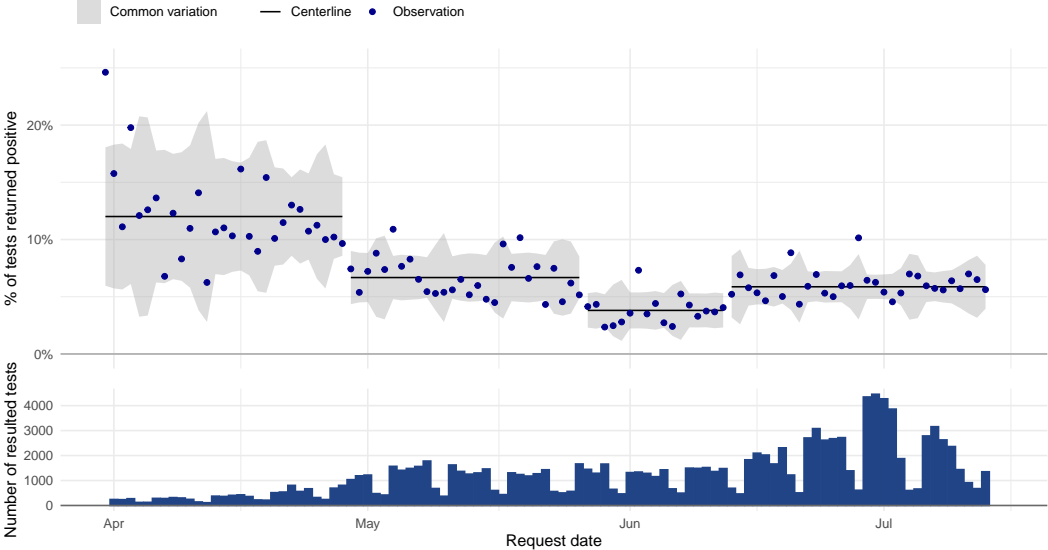
Mean serial interval (SI): 4.7 and standard deviation of SI: 2.9. Data from The New York Times, based on reports from state and local health agencies.
<https://www.nytimes.com/interactive/2020/us/coronavirus-us-cases.html> Pulled: 2020-07-15

Number of Covid-19 deaths in 14 county area



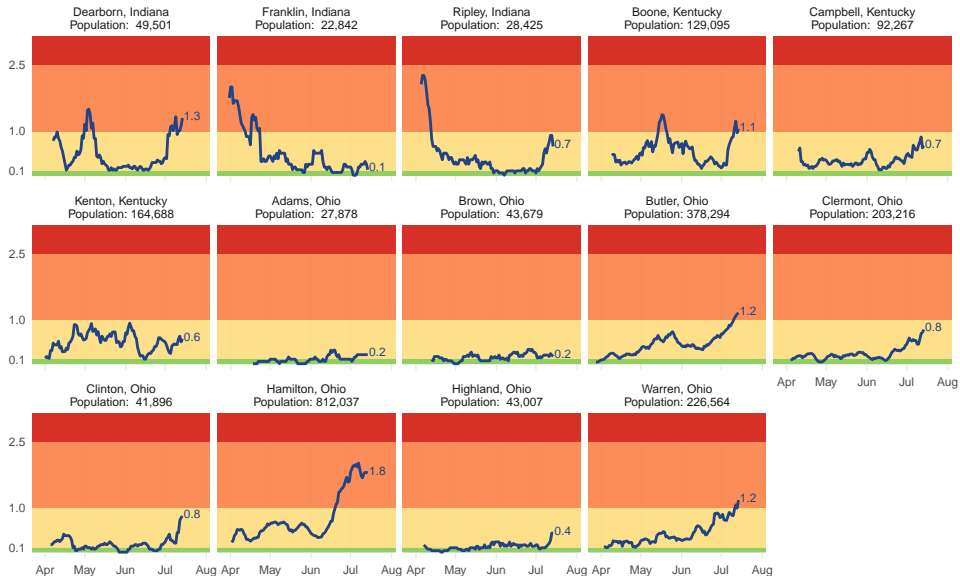
Data from The New York Times, based on reports from state and local health agencies.
Pulled on: 2020-07-15. <https://www.nytimes.com/interactive/2020/us/coronavirus-us-cases.html>

Percentage of test results returned positive



Open shapes indicates data within the last 7 days, likely to change.
Source: The Health Collaborative data as of 07/15/2020.

Seven day moving average of new Covid cases per 10,000 people in each county



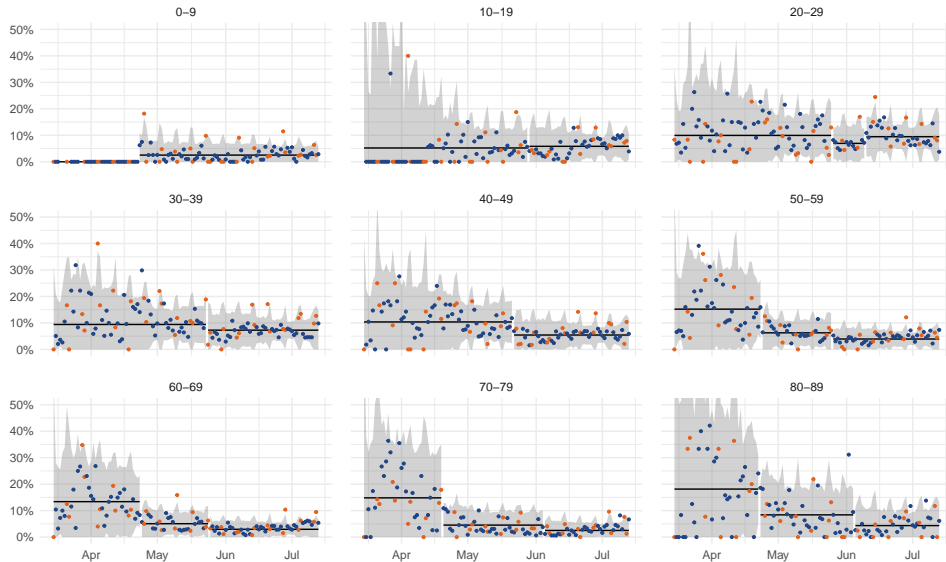
Levels are those suggested by Massachusetts Testing, Tracing, and Supported Isolation collaborative, information can be found here: <https://ethics.harvard.edu/ttsi-technical-handbook>.

Data from The New York Times, based on reports from state and local health agencies.

<https://www.nytimes.com/interactive/2020/us/coronavirus-us-cases.html> Pulled: 2020-07-15

Percentage of test results returned positive by age of patient

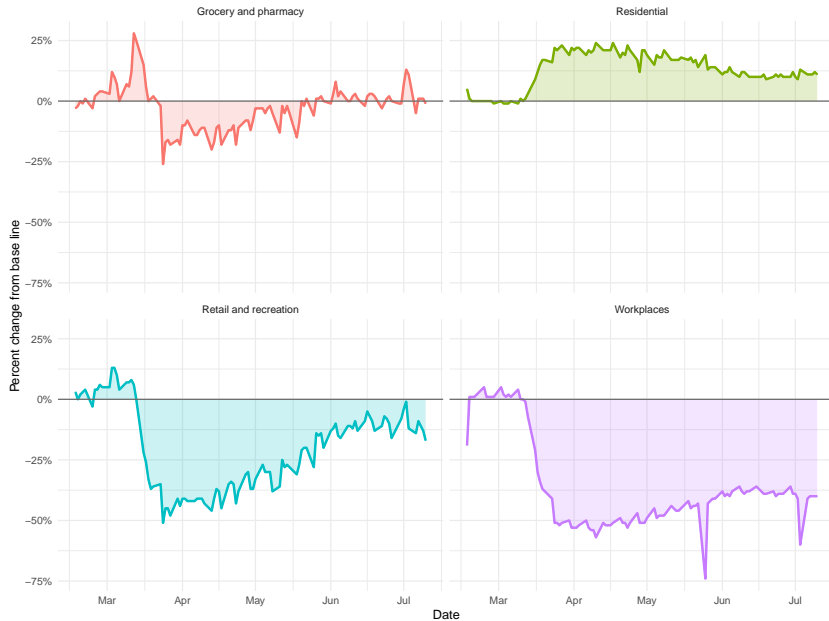
Common variation • Weekday • Weekend/Holiday



Source: The Health Collaborative data as of 07/15/2020.

Mobility

Percentage change in weekday mobility in Hamilton County



Source: Google mobility data. Most recent date: 2020-07-10 https://www.gstatic.com/covid19/mobility/Global_Mobility_Report.csv