

# A SURVEY OF REGISTERED NEW HAMPSHIRE VOTERS

---

CONDUCTED  
JANUARY 11-12, 2022

NEIL LEVESQUE, EXECUTIVE DIRECTOR  
TAUNA SISCO, PH.D, FACULTY ADVISOR



**NEW HAMPSHIRE  
INSTITUTE OF POLITICS**  
Saint Anselm College

3 SURVEY NOTES

4 CHARTS

9 WEIGHTED MARGINALS

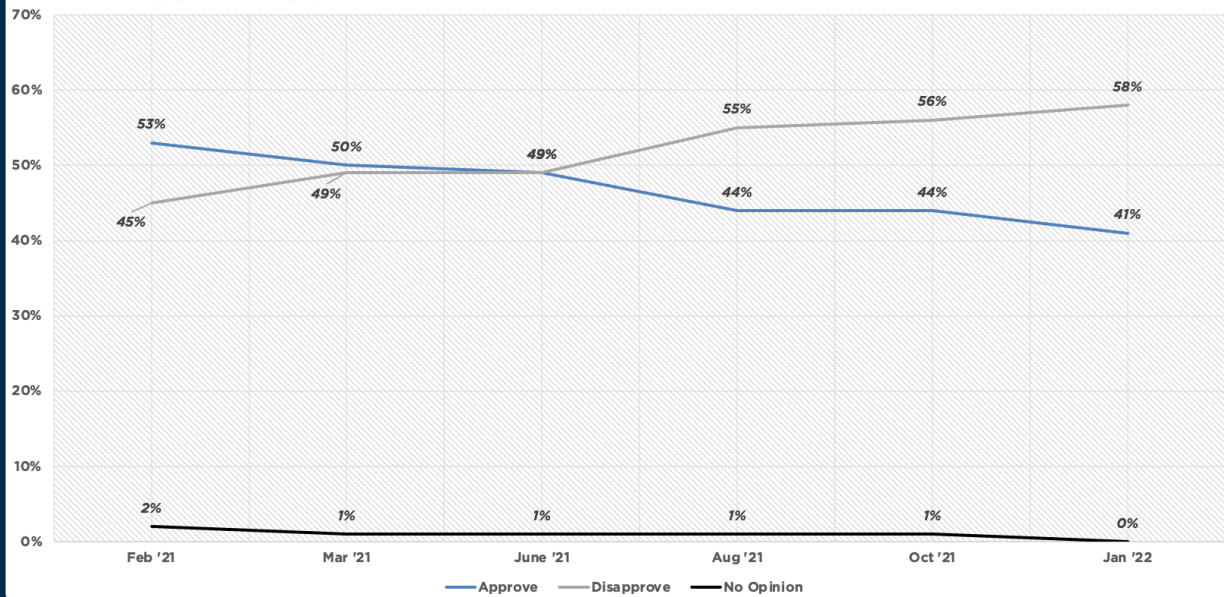
22 WEIGHTED TABLES

73 WEIGHTED DEMOGRAPHICS

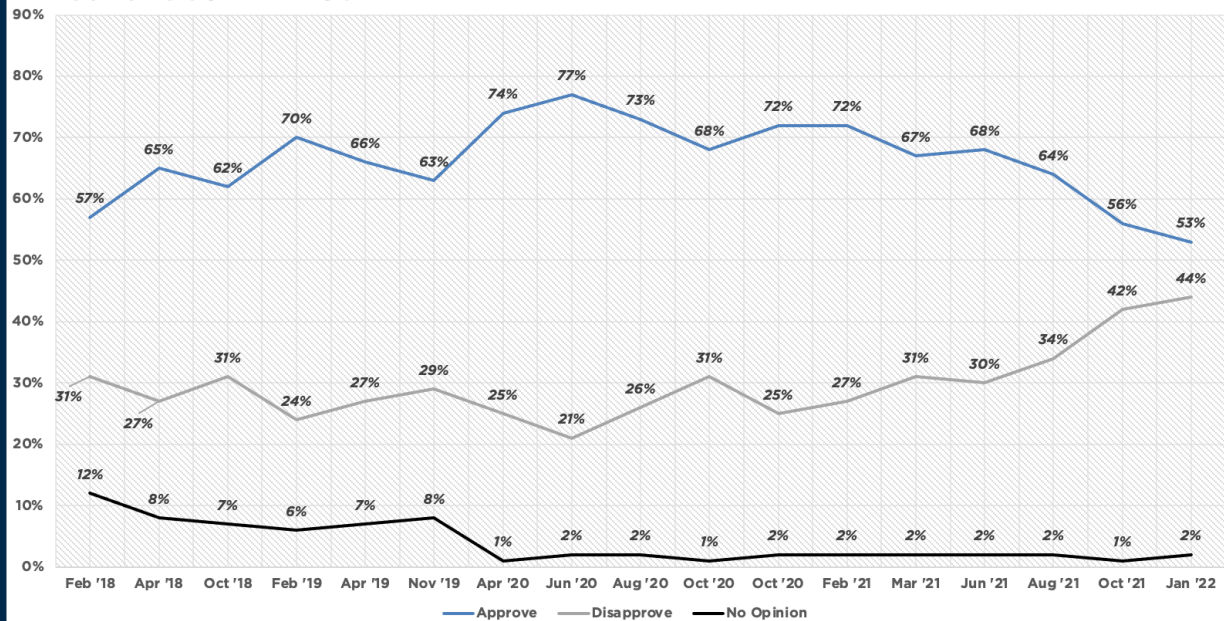
76 ABOUT SACSC

These results are from the Saint Anselm College Survey Center poll based on online surveys of 1215 New Hampshire registered voters. Surveys were collected between January 11<sup>th</sup> and 12<sup>th</sup>, 2022, from cell phone users randomly drawn from a sample of registered voters reflecting the demographic and partisan characteristics of the voting population. Names were presented in random order for the job approval series and the Senate ballot test. The survey has an overall margin of sampling error of +/- 2.8% with a confidence interval of 95%; the margin of sampling error for questions specific to congressional districts are 3.9% for the 1<sup>st</sup> Congressional District and 4.1% for the 2<sup>nd</sup> Congressional District. The data are weighted for age, gender, geography, and education based on a voter demographic model derived from historical voting patterns, but are not weighted by party registration or party identification.

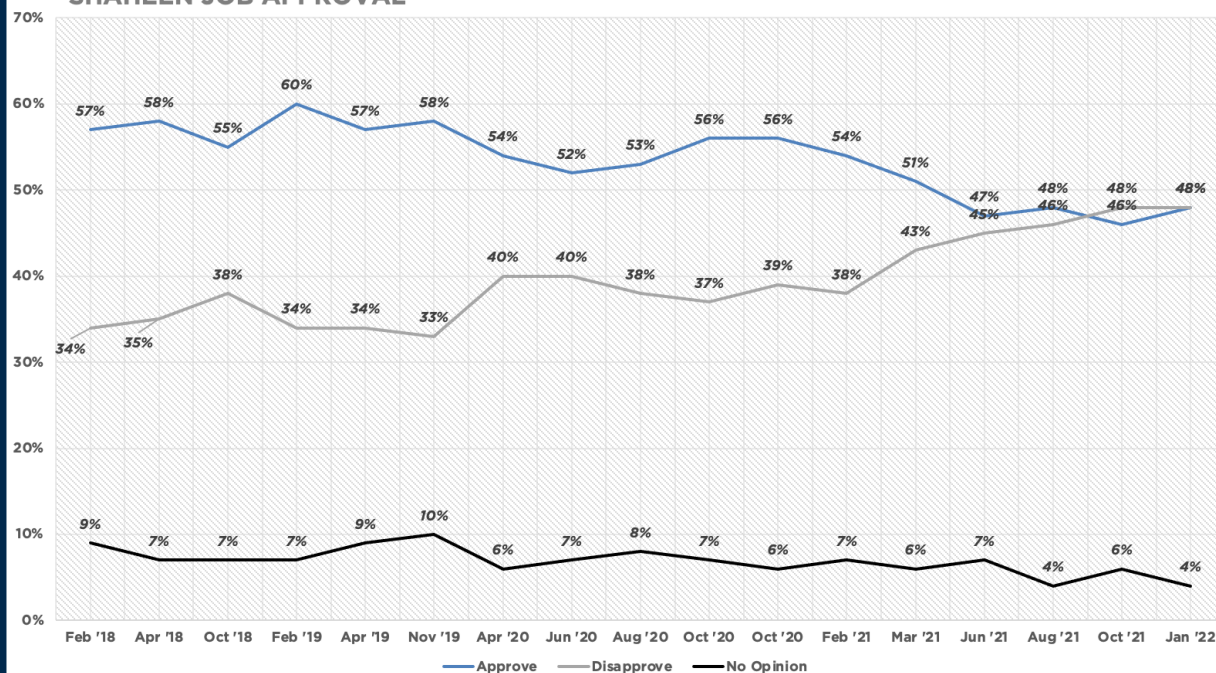
BIDEN JOB APPROVAL



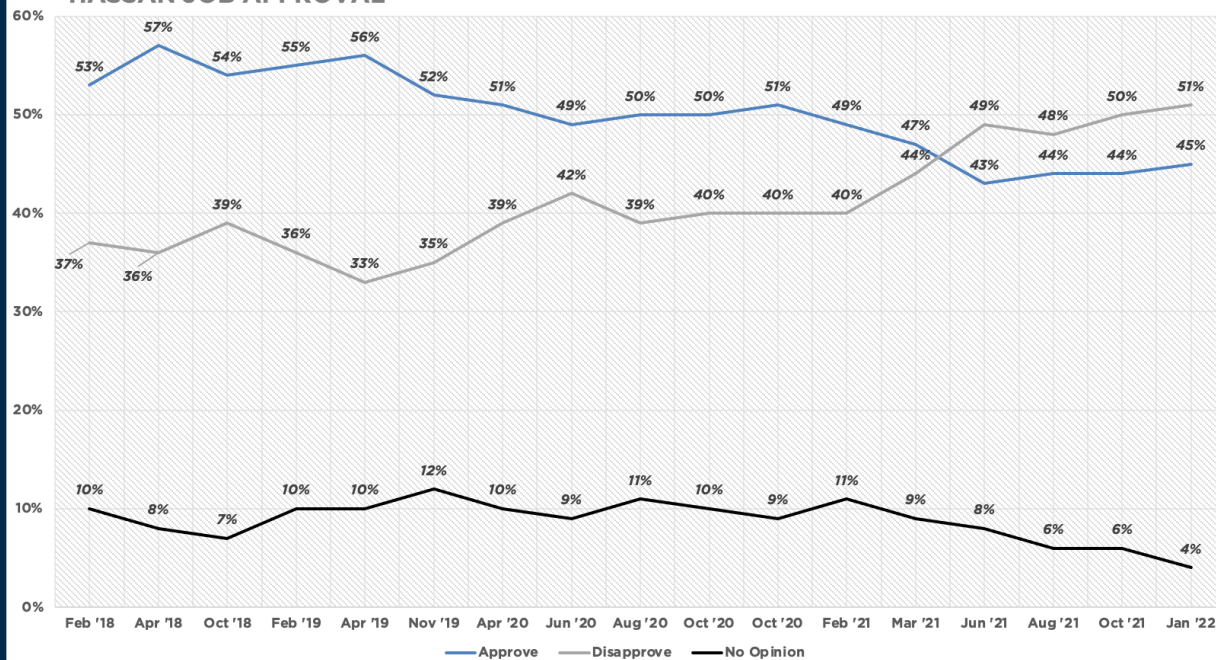
SUNUNU JOB APPROVAL



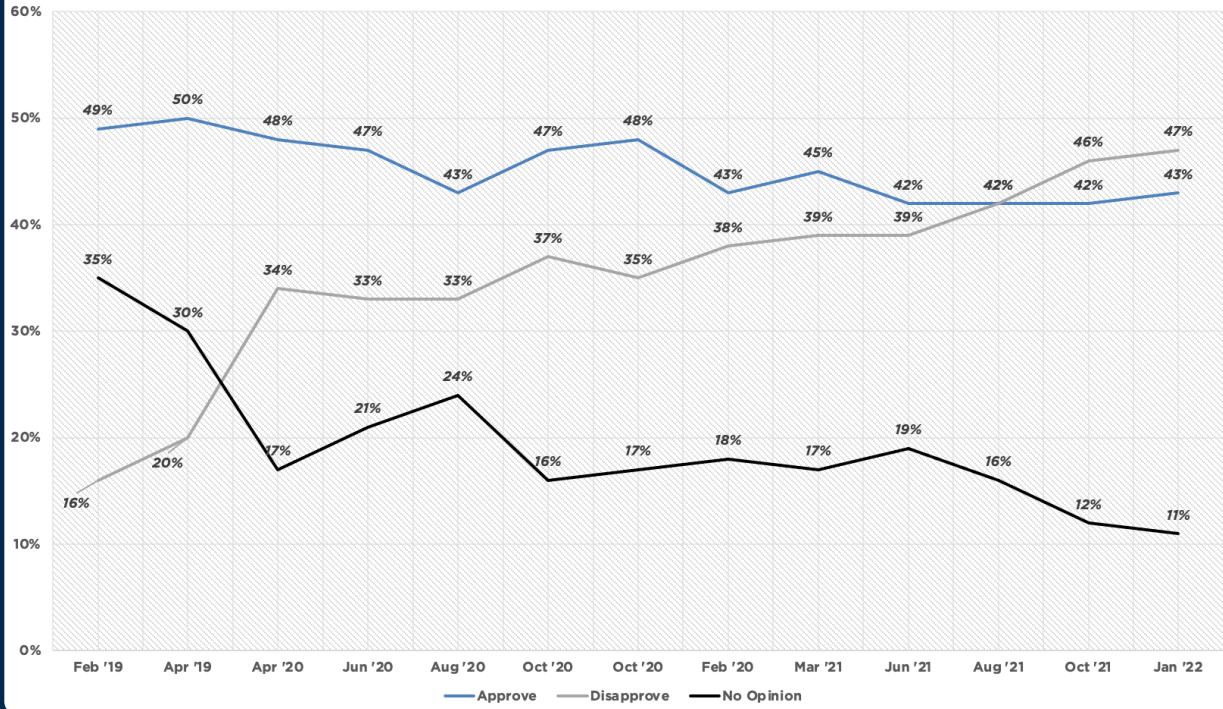
### SHAHEEN JOB APPROVAL



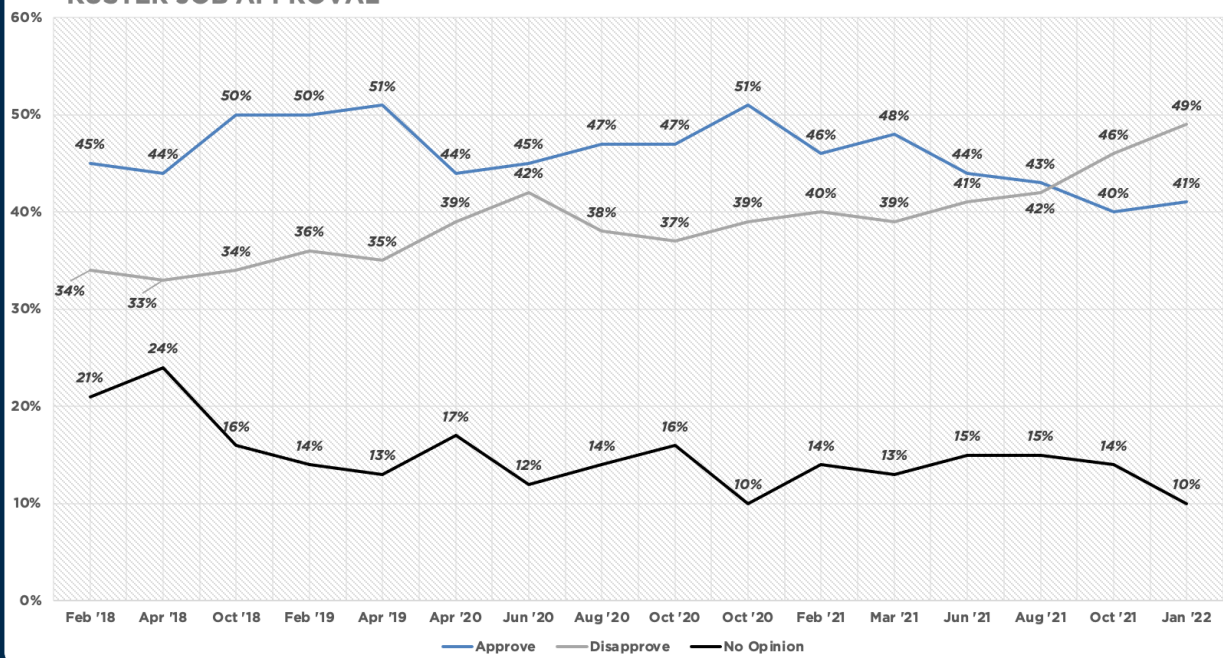
### HASSAN JOB APPROVAL



### PAPPAS JOB APPROVAL

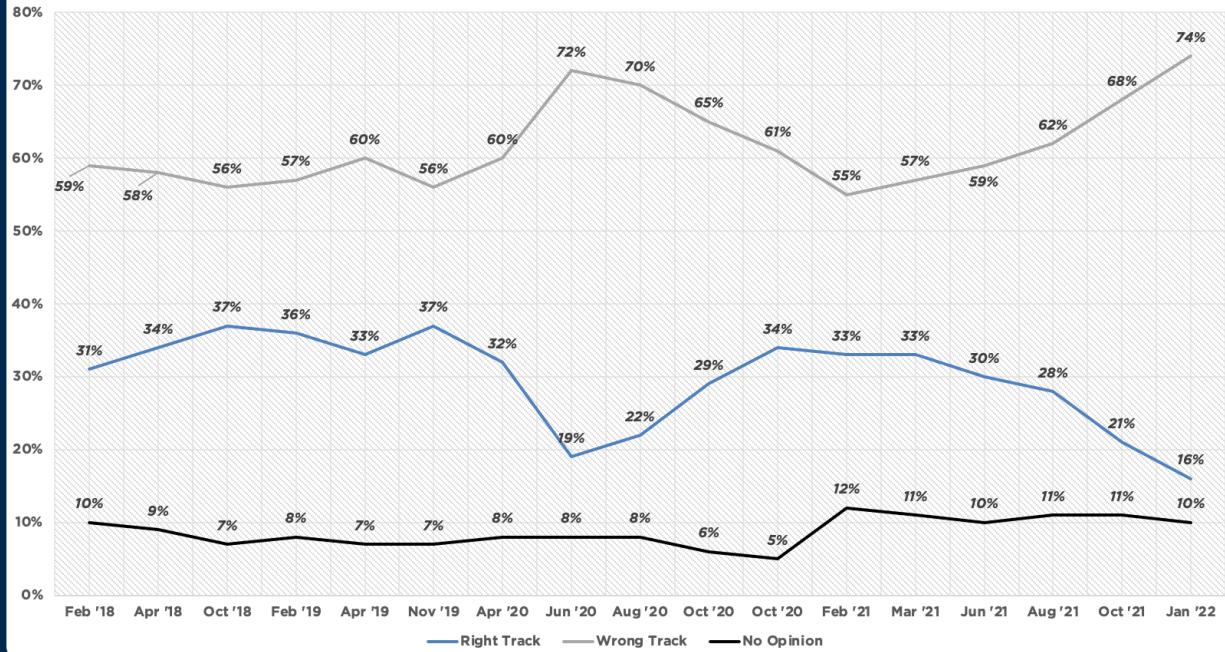


### KUSTER JOB APPROVAL

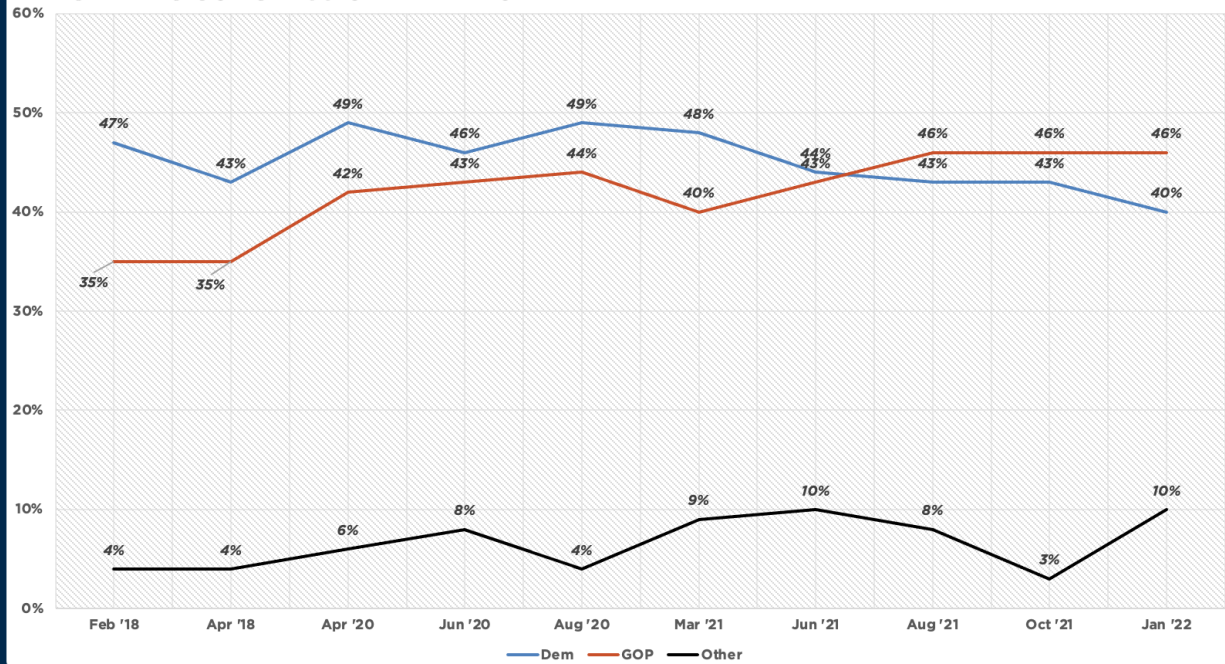




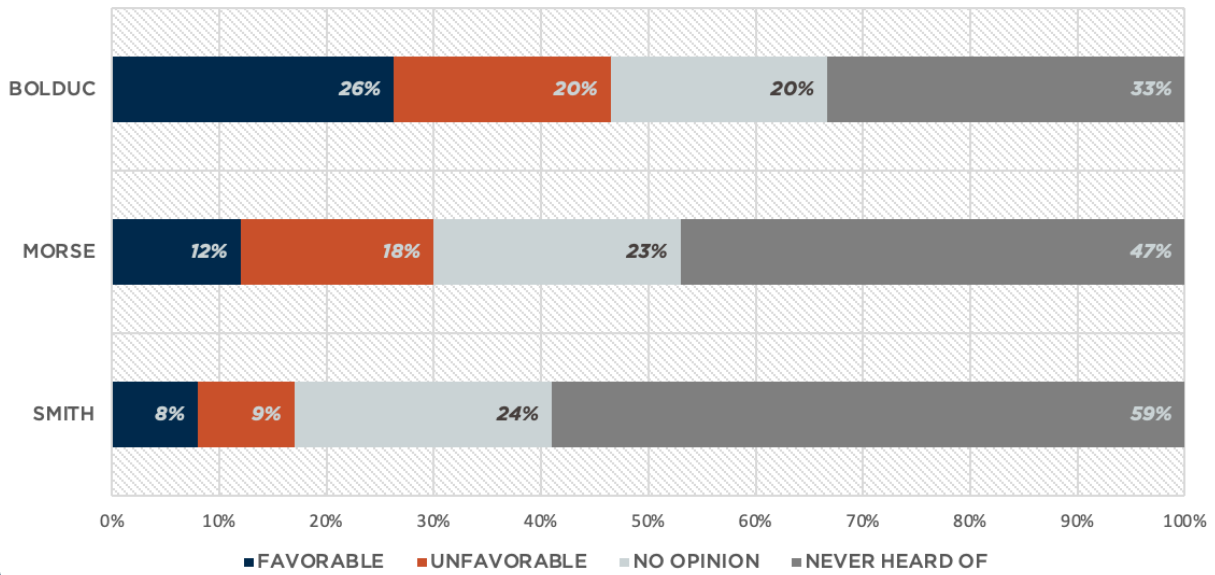
### RIGHT TRACK VS WRONG TRACK



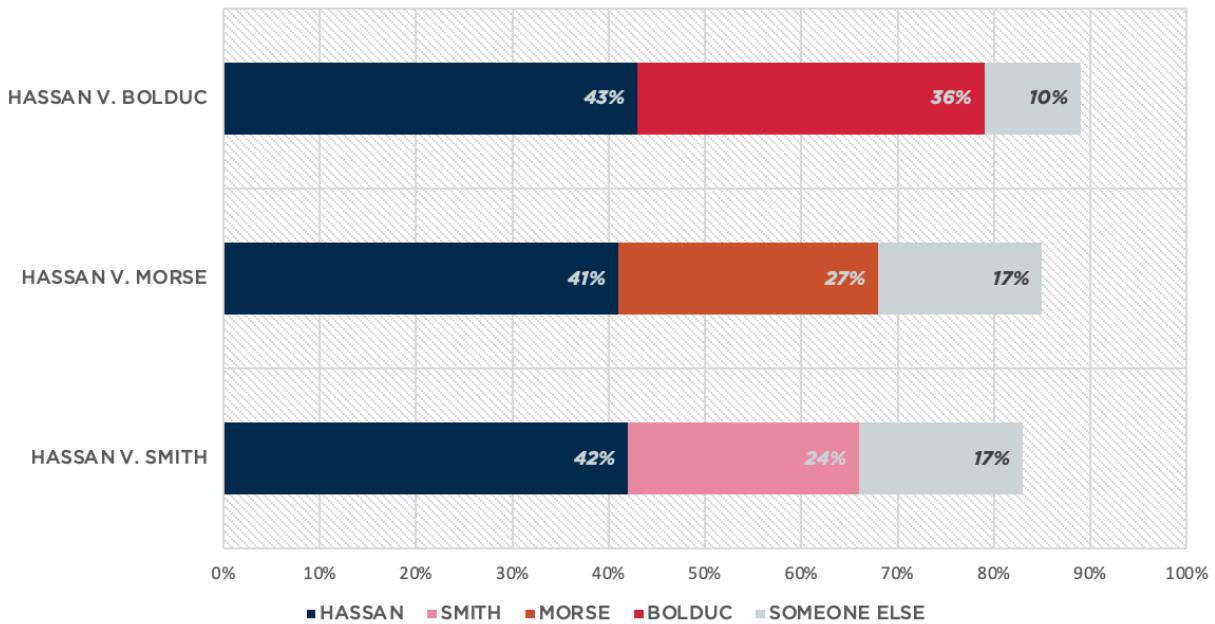
### GENERIC CONGRESSIONAL BALLOT



### NH SENATE NAME ID



### NH SENATE BALLOT TESTS





# WEIGHTED MARGINALS

9

January 11-12, 2022

n = 1215

New Hampshire Registered Voters

MoE +/- 2.8%

Would you say that things in our country are heading in the right direction, or have things gotten off on the wrong track?

	Frequency	Percent
Right Track	193	16
Wrong Track	904	74
Unsure	118	10
Total	1215	100

If the election for Congress were held today, for which candidate would you likely vote?

	Frequency	Percent
Democratic	488	40
Republican	560	46
Other	48	4
Unsure	119	10
Total	1215	100

What is your opinion of Joe Biden?

	Frequency	Percent
Strongly Favorable	236	19
Somewhat Favorable	268	22
Somewhat Unfavorable	82	7
Strongly Unfavorable	625	51
No Opinion	3	0
Never Heard Of	1	0
Favorable	504	41
Unfavorable	708	58
No Opinion	3	0
Total	1215	100

What is your opinion of Donald Trump?		
	Frequency	Percent
Strongly Favorable	296	24
Somewhat Favorable	223	18
Somewhat Unfavorable	46	4
Strongly Unfavorable	625	51
No Opinion	23	2
Never Heard Of	2	0
Favorable	519	43
Unfavorable	671	55
No Opinion	25	2
Total	1215	100

What is your opinion of Chris Sununu?		
	Frequency	Percent
Strongly Favorable	342	28
Somewhat Favorable	307	25
Somewhat Unfavorable	231	19
Strongly Unfavorable	309	25
No Opinion	26	2
Never Heard Of	0	0
Favorable	649	53
Unfavorable	540	44
No Opinion	26	2
Total	1215	100

What is your opinion of Jeanne Shaheen?		
	Frequency	Percent
Strongly Favorable	353	29
Somewhat Favorable	226	19
Somewhat Unfavorable	147	12
Strongly Unfavorable	439	36
No Opinion	46	4
Never Heard Of	5	0
Favorable	579	48
Unfavorable	586	48
No Opinion	51	4
Total	1215	100

What is your opinion of Maggie Hassan?		
	Frequency	Percent
Strongly Favorable	297	24
Somewhat Favorable	254	21
Somewhat Unfavorable	135	11
Strongly Unfavorable	480	40
No Opinion	45	4
Never Heard Of	4	0
Favorable	551	45
Unfavorable	615	51
No Opinion	49	4
Total	1215	100

What is your opinion of Chris Pappas?		
	Frequency	Percent
Strongly Favorable	150	24
Somewhat Favorable	123	19
Somewhat Unfavorable	94	15
Strongly Unfavorable	205	32
No Opinion	59	9
Never Heard Of	8	1
Favorable	274	43
Unfavorable	298	47
No Opinion	68	11
Total	640	100

What is your opinion of Annie Kuster?		
	Frequency	Percent
Strongly Favorable	116	20
Somewhat Favorable	122	21
Somewhat Unfavorable	56	10
Strongly Unfavorable	225	39
No Opinion	40	7
Never Heard Of	16	3
Favorable	238	41
Unfavorable	281	49
No Opinion	57	10
Total	575	100

What is your opinion of Don Bolduc?		
	Frequency	Percent
Strongly Favorable	157	13
Somewhat Favorable	156	13
Somewhat Unfavorable	71	6
Strongly Unfavorable	176	15
No Opinion	248	20
Never Heard Of	407	33
Favorable	312	26
Unfavorable	248	20
No Opinion	655	54
Total	1215	100

What is your opinion of Chuck Morse?		
	Frequency	Percent
Strongly Favorable	35	3
Somewhat Favorable	108	9
Somewhat Unfavorable	85	7
Strongly Unfavorable	134	11
No Opinion	284	23
Never Heard Of	569	47
Favorable	143	12
Unfavorable	219	18
No Opinion	853	70
Total	1215	100

What is your opinion of Kevin Smith?		
	Frequency	Percent
Strongly Favorable	14	1
Somewhat Favorable	82	7
Somewhat Unfavorable	36	3
Strongly Unfavorable	74	6
No Opinion	293	24
Never Heard Of	717	59
Favorable	96	8
Unfavorable	109	9
No Opinion	1010	83
Total	1215	100

Do you approve or disapprove of the way President Joe Biden is doing his job?		
	Frequency	Percent
Strongly Approve	224	18
Somewhat Approve	261	21
Somewhat Disapprove	93	8
Strongly Disapprove	631	52
No Opinion	5	0
Never Heard Of	2	0
Approve	485	40
Disapprove	724	60
No Opinion	7	1
Total	1215	100



Do you approve or disapprove of the way Governor Chris Sununu is doing his job?

	Frequency	Percent
Strongly Approve	341	28
Somewhat Approve	328	27
Somewhat Disapprove	235	19
Strongly Disapprove	292	24
No Opinion	18	1
Approve	670	55
Disapprove	527	43
No Opinion	18	1
Total	1215	100

Do you approve or disapprove of the way Senator Jeanne Shaheen is doing her job?

	Frequency	Percent
Strongly Approve	339	28
Somewhat Approve	227	19
Somewhat Disapprove	166	14
Strongly Disapprove	428	35
No Opinion	53	4
Never Heard Of	3	0
Approve	566	47
Disapprove	593	49
No Opinion	56	5
Total	1215	100

Do you approve or disapprove of the way Senator Maggie Hassan is doing her job?

	Frequency	Percent
Strongly Approve	295	24
Somewhat Approve	237	19
Somewhat Disapprove	145	12
Strongly Disapprove	467	38
No Opinion	65	5
Never Heard Of	7	1
Approve	532	44
Disapprove	611	50
No Opinion	71	6
Total	1215	100

Do you approve or disapprove of the way Congressman Chris Pappas is doing his job?

	Frequency	Percent
Strongly Approve	145	23
Somewhat Approve	128	20
Somewhat Disapprove	80	13
Strongly Disapprove	217	34
No Opinion	59	9
Never Heard Of	10	2
Approve	274	43
Disapprove	297	46
No Opinion	69	11
Total	640	100

Do you approve or disapprove of the way Congresswoman Annie Kuster is doing her job?

	Frequency	Percent
Strongly Approve	119	21
Somewhat Approve	113	20
Somewhat Disapprove	55	10
Strongly Disapprove	219	38
No Opinion	62	11
Never Heard Of	7	1
Approve	232	40
Disapprove	274	48
No Opinion	69	12
Total	575	100

When thinking about voting for candidates, which one of the below issues is most important to you?

	Frequency	Percent
Economy/Jobs	273	22
Government Spending/Taxes	212	17
Environment	157	13
National Security	115	9
COVID	96	8
Immigration	83	7
Abortion	63	5
Elections	51	4
Individual Rights	18	2
Education	18	1
Crime/Drug Use	17	1
Health Care	8	1
Other	105	9
Total	1215	100

Do you approve or disapprove of Governor Sununu's handling of COVID issues?		
	Frequency	Percent
Strongly Approve	332	27
Somewhat Approve	416	34
Somewhat Disapprove	226	19
Strongly Disapprove	211	17
Unsure	31	3
Approve	747	62
Disapprove	437	36
Unsure	31	3
Total	1215	100

Do you approve or disapprove of President Biden's handling of COVID issues?		
	Frequency	Percent
Strongly Approve	243	20
Somewhat Approve	257	21
Somewhat Disapprove	126	10
Strongly Disapprove	575	47
Unsure	14	1
Approve	501	41
Disapprove	700	58
Unsure	14	1
Total	1215	100

Do you approve or disapprove of President Biden's handling of the economy?

	Frequency	Percent
Strongly Approve	225	19
Somewhat Approve	261	21
Somewhat Disapprove	100	8
Strongly Disapprove	605	50
Unsure	24	2
Approve	486	40
Disapprove	705	58
Unsure	24	2
Total	1215	100

Congress is considering a bill intended to make voting more accessible, transparent and uniform by increasing federal authority and oversight over how states conduct elections. Would you be more likely or less likely to vote for an elected official that supports this bill?

	Frequency	Percent
Much More Likely	437	36
Somewhat More Likely	146	12
Somewhat Less Likely	52	4
Much Less Likely	486	40
Unsure	94	8
More Likely	583	48
Less Likely	538	44
Unsure	94	8
Total	1215	100

Would you be more likely or less likely to support an elected official that votes to eliminate the Senate filibuster to allow legislation to pass with a simple majority?

	Frequency	Percent
Much More Likely	313	26
Somewhat More Likely	190	16
Somewhat Less Likely	54	4
Much Less Likely	481	40
Unsure	177	15
More Likely	503	41
Less Likely	535	44
Unsure	177	15
Total	1215	100

Do you think Governor Chris Sununu has done a good enough job to deserve re-election, or is it time to give someone new a chance?

	Frequency	Percent
Deserves Re-election	543	45
Someone New	546	45
Unsure	126	10
Total	1215	100

Do you think Congressman Chris Pappas has done a good enough job to deserve re-election, or is it time to give someone new a chance?

	Frequency	Percent
Deserves Re-election	243	38
Someone New	286	45
Unsure	111	17
Total	640	100



Do you think Congresswoman Annie Kuster has done a good enough job to deserve re-election, or is it time to give someone new a chance?

	Frequency	Percent
Deserves Re-election	191	33
Someone New	289	50
Unsure	95	17
Total	575	100

If the election for US Senate were held today, and the candidates were Maggie Hassan and Don Bolduc, for whom would you vote?

	Frequency	Percent
Hassan	517	43
Bolduc	431	36
Someone Else	120	10
Unsure	147	12
Total	1215	100

If the election for US Senate were held today, and the candidates were Maggie Hassan and Chuck Morse, for whom would you vote?

	Frequency	Percent
Hassan	502	41
Morse	326	27
Someone Else	202	17
Unsure	185	15
Total	1215	100

If the election for US Senate were held today, and the candidates were Maggie Hassan and Kevin Smith, for whom would you vote?

	Frequency	Percent
Hassan	507	42
Smith	293	24
Someone Else	210	17
Unsure	206	17
Total	1215	100

January 11-12, 2022

n = 1215

New Hampshire Registered Voters

MoE +/- 2.8%

Would you say that things in our country are heading in the right direction, or have things gotten off on the wrong track?				
		Right Track	Wrong Track	Unsure
Gender	Female	18%	71%	11%
	Male	14%	78%	9%
Age	18-34	7%	76%	16%
	35-54	18%	76%	6%
	55-64	15%	74%	11%
	65+	19%	72%	9%
Education	High School or Less	8%	78%	13%
	Some College/Associates Degree	13%	80%	7%
	College Graduate	19%	72%	8%
	Graduate/Professional School	21%	66%	13%
Ideology	Very Conservative	1%	99%	
	Somewhat Conservative	3%	94%	3%
	Moderate	10%	77%	13%
	Somewhat Liberal	37%	46%	17%
	Very Liberal	26%	58%	16%
Party Registration	Democratic	33%	50%	17%
	Republican	1%	97%	3%
	Undeclared	15%	75%	10%
Party Identification	Democratic	33%	49%	17%
	Republican	1%	97%	2%
	Swing	4%	89%	7%
Congressional District	CD-1	16%	73%	11%
	CD-2	16%	76%	9%
Region	North Country/Lakes	18%	75%	7%
	Monadnock/Dartmouth	17%	78%	5%
	Merrimack Valley	16%	73%	12%
	Seacoast/Border	15%	74%	10%
Total		16%	74%	10%

If the election for Congress were held today, for which candidate would you likely vote?

		Democratic	Republican	Other	Unsure
Gender	Female	46%	39%	5%	11%
	Male	34%	54%	3%	9%
Age	18-34	38%	38%	14%	9%
	35-54	35%	49%	3%	13%
	55-64	38%	53%	2%	8%
	65+	50%	41%	1%	8%
Education	High School or Less	35%	53%		12%
	Some College/Associates Degree	31%	53%	6%	9%
	College Graduate	41%	44%	4%	10%
	Graduate/Professional School	56%	32%	3%	8%
Ideology	Very Conservative	1%	97%	2%	1%
	Somewhat Conservative	8%	77%	1%	14%
	Moderate	21%	44%	14%	20%
	Somewhat Liberal	82%	9%	1%	9%
	Very Liberal	92%		6%	2%
Party Registration	Democratic	85%	6%	4%	5%
	Republican	2%	89%	2%	6%
	Undeclared	36%	42%	6%	17%
Party Identification	Democratic	83%	5%	4%	9%
	Republican	2%	88%	1%	8%
	Swing	11%	44%	20%	25%
Congressional District	CD-1	40%	48%	3%	9%
	CD-2	40%	44%	5%	11%
Region	North Country/Lakes	32%	52%	11%	5%
	Monadnock/Dartmouth	38%	47%	5%	10%
	Merrimack Valley	44%	41%	3%	12%
	Seacoast/Border	39%	49%	3%	9%
Total		40%	46%	4%	10%

What is your opinion of Joe Biden?				
		Favorable	Unfavorable	No Opinion
Gender	Female	48%	52%	0%
	Male	35%	65%	
Age	18-34	32%	68%	
	35-54	37%	63%	1%
	55-64	40%	60%	
	65+	54%	45%	1%
Education	High School or Less	40%	59%	1%
	Some College/Associates Degree	30%	70%	
	College Graduate	42%	58%	0%
	Graduate/Professional School	59%	40%	0%
Ideology	Very Conservative	2%	98%	
	Somewhat Conservative	11%	88%	1%
	Moderate	29%	70%	1%
	Somewhat Liberal	85%	15%	
	Very Liberal	79%	21%	
Party Registration	Democratic	83%	17%	
	Republican	4%	96%	1%
	Undeclared	40%	60%	0%
Party Identification	Democratic	83%	17%	
	Republican	4%	96%	1%
	Swing	19%	80%	1%
Congressional District	CD-1	41%	59%	
	CD-2	42%	57%	1%
Region	North Country/Lakes	32%	68%	
	Monadnock/Dartmouth	41%	59%	
	Merrimack Valley	47%	52%	1%
	Seacoast/Border	38%	62%	
Total		42%	58%	0%

### What is your opinion of Joe Biden?

		Strongly Favorable	Somewhat Favorable	Somewhat Unfavorable	Strongly Unfavorable	No Opinion	Never Heard Of
Gender	Female	25%	23%	7%	45%	0%	0%
	Male	14%	21%	6%	59%		
Age	18-34	5%	26%	17%	52%		
	35-54	14%	23%	7%	56%	0%	0%
	55-64	21%	20%	4%	55%		
	65+	34%	21%	3%	42%	1%	
Education	High School or Less	14%	25%	4%	55%	1%	
	Some College/Associates Degree	19%	12%	7%	63%		
	College Graduate	18%	24%	10%	48%	0%	
	Graduate/Professional School	26%	33%	5%	36%		0%
Ideology	Very Conservative	1%	1%	1%	97%		
	Somewhat Conservative	4%	8%	7%	81%	1%	
	Moderate	12%	17%	6%	64%	1%	1%
	Somewhat Liberal	47%	39%	4%	11%		
	Very Liberal	30%	49%	18%	3%		
Party Registration	Democratic	45%	37%	7%	10%		
	Republican	1%	3%	4%	91%	1%	0%
	Undeclared	14%	26%	9%	51%	0%	
Party Identification	Democratic	41%	42%	9%	9%		
	Republican	1%	3%	4%	92%	0%	0%
	Swing	4%	15%	11%	70%	1%	
Congressional District	CD-1	22%	19%	8%	51%		
	CD-2	16%	26%	6%	51%	1%	0%
Region	North Country/Lakes	21%	11%	7%	61%		
	Monadnock/Dartmouth	17%	24%	6%	53%		
	Merrimack Valley	20%	27%	5%	47%	1%	0%
	Seacoast/Border	20%	19%	9%	53%		
Total		19%	22%	7%	51%	0%	0%

What is your opinion of Donald Trump?				
		Favorable	Unfavorable	No Opinion
Gender	Female	36%	62%	2%
	Male	50%	48%	2%
Age	18-34	35%	63%	2%
	35-54	47%	51%	3%
	55-64	48%	50%	2%
	65+	37%	61%	2%
Education	High School or Less	54%	43%	2%
	Some College/Associates Degree	51%	46%	3%
	College Graduate	39%	59%	1%
	Graduate/Professional School	25%	73%	2%
Ideology	Very Conservative	94%	5%	1%
	Somewhat Conservative	72%	25%	4%
	Moderate	41%	54%	5%
	Somewhat Liberal	6%	94%	1%
	Very Liberal		100%	
Party Registration	Democratic	7%	93%	0%
	Republican	85%	13%	3%
	Undeclared	36%	61%	3%
Party Identification	Democratic	4%	95%	0%
	Republican	82%	15%	3%
	Swing	39%	55%	6%
Congressional District	CD-1	43%	54%	3%
	CD-2	42%	57%	1%
Region	North Country/Lakes	47%	52%	1%
	Monadnock/Dartmouth	45%	55%	1%
	Merrimack Valley	38%	59%	3%
	Seacoast/Border	46%	52%	2%
Total		43%	55%	2%



### What is your opinion of Donald Trump?

		Strongly Favorable	Somewhat Favorable	Somewhat Unfavorable	Strongly Unfavorable	No Opinion	Never Heard Of
Gender	Female	22%	14%	4%	58%	2%	
	Male	27%	23%	4%	44%	2%	0%
Age	18-34	13%	22%	2%	61%	1%	1%
	35-54	27%	20%	5%	46%	2%	
	55-64	29%	19%	5%	45%	2%	
	65+	23%	14%	3%	58%	2%	
Education	High School or Less	36%	19%		43%	2%	
	Some College/Associates Degree	29%	23%	5%	41%	3%	
	College Graduate	22%	18%	5%	55%	1%	
	Graduate/Professional School	12%	12%	4%	69%	2%	1%
Ideology	Very Conservative	71%	23%	3%	2%	1%	
	Somewhat Conservative	32%	40%	8%	17%	3%	
	Moderate	25%	16%	5%	49%	4%	1%
	Somewhat Liberal	1%	5%	1%	92%	1%	
	Very Liberal			1%	99%		
Party Registration	Democratic	3%	4%	1%	92%	0%	
	Republican	52%	33%	5%	8%	3%	
	Undeclared	18%	18%	5%	55%	3%	0%
Party Identification	Democratic	2%	3%	1%	95%	0%	
	Republican	49%	34%	6%	9%	3%	
	Swing	17%	22%	10%	45%	5%	2%
Congressional District	CD-1	25%	18%	4%	50%	3%	
	CD-2	23%	18%	3%	53%	1%	0%
Region	North Country/Lakes	25%	22%	3%	49%	1%	
	Monadnock/Dartmouth	28%	17%	6%	49%	1%	
	Merrimack Valley	20%	18%	4%	55%	2%	0%
	Seacoast/Border	27%	19%	3%	49%	2%	
Total		24%	18%	4%	52%	2%	0%

What is your opinion of Chris Sununu?				
		Favorable	Unfavorable	No Opinion
Gender	Female	44%	53%	3%
	Male	63%	35%	2%
Age	18-34	51%	46%	3%
	35-54	53%	46%	1%
	55-64	52%	44%	4%
	65+	56%	42%	1%
Education	High School or Less	58%	41%	1%
	Some College/Associates Degree	57%	40%	3%
	College Graduate	52%	46%	2%
	Graduate/Professional School	46%	53%	1%
Ideology	Very Conservative	71%	28%	2%
	Somewhat Conservative	78%	21%	1%
	Moderate	58%	38%	3%
	Somewhat Liberal	38%	60%	2%
	Very Liberal	12%	85%	3%
Party Registration	Democratic	22%	74%	3%
	Republican	79%	20%	2%
	Undeclared	58%	41%	2%
Party Identification	Democratic	28%	69%	3%
	Republican	78%	21%	1%
	Swing	61%	37%	2%
Congressional District	CD-1	58%	40%	2%
	CD-2	49%	49%	2%
Region	North Country/Lakes	63%	35%	2%
	Monadnock/Dartmouth	45%	53%	3%
	Merrimack Valley	51%	48%	1%
	Seacoast/Border	57%	39%	3%
Total		53%	44%	2%

### What is your opinion of Chris Sununu?

		Strongly Favorable	Somewhat Favorable	Somewhat Unfavorable	Strongly Unfavorable	No Opinion	Never Heard Of
Gender	Female	23%	21%	20%	33%	3%	
	Male	34%	30%	18%	17%	2%	
Age	18-34	31%	20%	11%	36%	3%	
	35-54	26%	27%	19%	27%	1%	
	55-64	26%	26%	21%	22%	4%	
	65+	30%	26%	22%	21%	1%	
Education	High School or Less	32%	26%	24%	17%	1%	
	Some College/Associates Degree	33%	24%	13%	27%	3%	
	College Graduate	26%	26%	19%	27%	2%	
	Graduate/Professional School	20%	26%	25%	27%	1%	
Ideology	Very Conservative	41%	30%	11%	17%	2%	
	Somewhat Conservative	48%	30%	9%	12%	1%	
	Moderate	34%	24%	18%	20%	3%	
	Somewhat Liberal	10%	28%	31%	29%	2%	
	Very Liberal	3%	8%	27%	59%	3%	
Party Registration	Democratic	8%	14%	32%	43%	3%	
	Republican	46%	33%	9%	10%	2%	
	Undeclared	30%	28%	17%	24%	2%	
Party Identification	Democratic	9%	19%	29%	40%	3%	
	Republican	46%	32%	9%	12%	1%	
	Swing	39%	22%	16%	21%	2%	
Congressional District	CD-1	28%	29%	19%	22%	2%	
	CD-2	28%	21%	19%	30%	2%	
Region	North Country/Lakes	37%	26%	16%	20%	2%	
	Monadnock/Dartmouth	31%	13%	23%	30%	3%	
	Merrimack Valley	27%	24%	19%	29%	1%	
	Seacoast/Border	25%	33%	18%	21%	3%	
Total		28%	25%	19%	26%	2%	0%

What is your opinion of Jeanne Shaheen?				
		Favorable	Unfavorable	No Opinion
Gender	Female	54%	42%	4%
	Male	40%	55%	5%
Age	18-34	42%	52%	6%
	35-54	38%	54%	7%
	55-64	48%	49%	3%
	65+	62%	37%	1%
Education	High School or Less	43%	51%	5%
	Some College/Associates Degree	37%	58%	6%
	College Graduate	51%	46%	3%
	Graduate/Professional School	64%	34%	3%
Ideology	Very Conservative	6%	90%	4%
	Somewhat Conservative	23%	74%	4%
	Moderate	36%	63%	2%
	Somewhat Liberal	87%	7%	6%
	Very Liberal	84%	10%	6%
Party Registration	Democratic	84%	12%	3%
	Republican	11%	84%	5%
	Undeclared	49%	48%	4%
Party Identification	Democratic	86%	11%	3%
	Republican	12%	83%	5%
	Swing	29%	63%	8%
Congressional District	CD-1	48%	48%	3%
	CD-2	47%	48%	5%
Region	North Country/Lakes	37%	57%	6%
	Monadnock/Dartmouth	46%	48%	6%
	Merrimack Valley	53%	45%	3%
	Seacoast/Border	46%	50%	4%
Total		48%	48%	4%

### What is your opinion of Jeanne Shaheen?

		Strongly Favorable	Somewhat Favorable	Somewhat Unfavorable	Strongly Unfavorable	No Opinion	Never Heard Of
Gender	Female	36%	18%	9%	32%	4%	
	Male	21%	19%	15%	40%	4%	1%
Age	18-34	18%	24%	14%	38%	5%	1%
	35-54	23%	15%	13%	41%	6%	1%
	55-64	30%	18%	10%	39%	3%	
	65+	42%	20%	11%	26%	1%	
Education	High School or Less	33%	10%	11%	40%	4%	1%
	Some College/Associates Degree	21%	16%	14%	43%	5%	0%
	College Graduate	27%	24%	12%	34%	3%	0%
	Graduate/Professional School	41%	23%	9%	25%	3%	
Ideology	Very Conservative		6%	13%	77%	2%	2%
	Somewhat Conservative	8%	14%	23%	52%	3%	1%
	Moderate	21%	14%	10%	52%	2%	
	Somewhat Liberal	62%	26%	3%	4%	6%	
	Very Liberal	51%	33%	8%	2%	6%	
Party Registration	Democratic	63%	22%	5%	7%	3%	
	Republican	2%	9%	20%	64%	4%	1%
	Undeclared	24%	24%	11%	36%	4%	0%
Party Identification	Democratic	59%	27%	5%	6%	3%	
	Republican	2%	11%	19%	64%	4%	1%
	Swing	12%	18%	11%	52%	7%	1%
Congressional District	CD-1	30%	19%	14%	34%	3%	0%
	CD-2	28%	18%	10%	38%	5%	1%
Region	North Country/Lakes	25%	11%	16%	41%	6%	
	Monadnock/Dartmouth	23%	23%	8%	41%	4%	2%
	Merrimack Valley	33%	20%	10%	34%	3%	
	Seacoast/Border	29%	17%	15%	35%	4%	0%
Total		29%	19%	12%	36%	4%	0%

What is your opinion of Maggie Hassan?				
		Favorable	Unfavorable	No Opinion
Gender	Female	53%	42%	4%
	Male	37%	60%	3%
Age	18-34	39%	55%	6%
	35-54	38%	56%	5%
	55-64	44%	52%	3%
	65+	59%	39%	2%
Education	High School or Less	45%	53%	2%
	Some College/Associates Degree	35%	61%	4%
	College Graduate	47%	48%	5%
	Graduate/Professional School	60%	37%	4%
Ideology	Very Conservative	4%	93%	3%
	Somewhat Conservative	18%	78%	4%
	Moderate	32%	65%	3%
	Somewhat Liberal	86%	10%	5%
	Very Liberal	86%	9%	5%
Party Registration	Democratic	85%	12%	3%
	Republican	8%	88%	4%
	Undeclared	44%	51%	5%
Party Identification	Democratic	86%	11%	3%
	Republican	8%	88%	5%
	Swing	24%	70%	6%
Congressional District	CD-1	45%	52%	3%
	CD-2	46%	49%	5%
Region	North Country/Lakes	35%	60%	5%
	Monadnock/Dartmouth	47%	50%	3%
	Merrimack Valley	50%	46%	4%
	Seacoast/Border	43%	53%	4%
Total		45%	51%	4%

### What is your opinion of Maggie Hassan?

		Strongly Favorable	Somewhat Favorable	Somewhat Unfavorable	Strongly Unfavorable	No Opinion	Never Heard Of
Gender	Female	31%	22%	8%	34%	4%	0%
	Male	17%	20%	14%	45%	3%	1%
Age	18-34	13%	26%	12%	43%	4%	2%
	35-54	20%	18%	13%	44%	5%	0%
	55-64	26%	18%	11%	41%	3%	
	65+	35%	24%	9%	30%	2%	
Education	High School or Less	23%	22%	10%	43%	2%	
	Some College/Associates Degree	19%	16%	13%	49%	3%	0%
	College Graduate	24%	23%	11%	37%	5%	0%
	Graduate/Professional School	35%	25%	9%	27%	3%	0%
Ideology	Very Conservative		4%	9%	84%	3%	
	Somewhat Conservative	6%	12%	21%	57%	3%	1%
	Moderate	11%	20%	9%	55%	3%	
	Somewhat Liberal	53%	33%	6%	4%	4%	1%
	Very Liberal	50%	36%	7%	2%	5%	
Party Registration	Democratic	55%	30%	5%	7%	3%	
	Republican	2%	6%	17%	71%	4%	1%
	Undeclared	18%	26%	12%	39%	4%	0%
Party Identification	Democratic	50%	36%	4%	6%	3%	0%
	Republican	1%	6%	16%	71%	4%	1%
	Swing	10%	15%	19%	50%	6%	
Congressional District	CD-1	26%	19%	12%	40%	2%	0%
	CD-2	23%	23%	10%	39%	5%	0%
Region	North Country/Lakes	25%	10%	15%	45%	5%	
	Monadnock/Dartmouth	20%	27%	7%	43%	3%	
	Merrimack Valley	27%	23%	10%	37%	3%	0%
	Seacoast/Border	24%	19%	13%	40%	4%	0%
Total		25%	21%	11%	40%	4%	0%

What is your opinion of Chris Pappas?				
		Favorable	Unfavorable	No Opinion
Gender	Female	47%	42%	11%
	Male	38%	52%	10%
Age	18-34	50%	42%	8%
	35-54	38%	48%	15%
	55-64	38%	52%	10%
	65+	50%	42%	8%
Education	High School or Less	43%	50%	8%
	Some College/Associates Degree	33%	53%	13%
	College Graduate	41%	49%	10%
	Graduate/Professional School	61%	31%	8%
Ideology	Very Conservative	2%	89%	9%
	Somewhat Conservative	19%	74%	7%
	Moderate	30%	51%	19%
	Somewhat Liberal	81%	9%	10%
	Very Liberal	80%	8%	12%
Party Registration	Democratic	80%	11%	9%
	Republican	10%	80%	10%
	Undeclared	42%	45%	13%
Party Identification	Democratic	81%	9%	10%
	Republican	11%	79%	10%
	Swing	25%	61%	14%
Region	North Country/Lakes	36%	49%	15%
	Monadnock/Dartmouth	75%	25%	
	Merrimack Valley	50%	45%	5%
	Seacoast/Border	41%	47%	12%
Total		43%	47%	10%



### What is your opinion of Chris Pappas?

		Strongly Favorable	Somewhat Favorable	Somewhat Unfavorable	Strongly Unfavorable	No Opinion	Never Heard Of
Gender	Female	29%	18%	10%	31%	10%	1%
	Male	18%	20%	19%	32%	8%	2%
Age	18-34	20%	30%	24%	18%	6%	2%
	35-54	22%	16%	15%	33%	12%	3%
	55-64	22%	17%	15%	37%	9%	1%
	65+	30%	21%	9%	33%	8%	
Education	High School or Less	23%	19%	11%	39%	5%	3%
	Some College/Associates Degree	19%	15%	19%	34%	13%	1%
	College Graduate	21%	20%	15%	34%	9%	1%
	Graduate/Professional School	35%	26%	12%	20%	8%	
Ideology	Very Conservative		2%	11%	77%	8%	1%
	Somewhat Conservative	5%	14%	25%	49%	6%	2%
	Moderate	8%	22%	21%	30%	15%	4%
	Somewhat Liberal	50%	30%	5%	5%	10%	
	Very Liberal	54%	26%	8%		11%	
Party Registration	Democratic	55%	26%	8%	4%	9%	
	Republican	2%	8%	21%	59%	8%	1%
	Undeclared	17%	25%	14%	30%	11%	2%
Party Identification	Democratic	50%	31%	6%	3%	10%	
	Republican	2%	9%	21%	58%	8%	3%
	Swing	9%	18%	27%	33%	11%	2%
Region	North Country/Lakes	27%	10%	15%	33%	14%	1%
	Monadnock/Dartmouth	75%		25%			
	Merrimack Valley	27%	23%	14%	31%	5%	
	Seacoast/Border	20%	21%	15%	32%	10%	2%
Total		24%	19%	15%	32%	9%	1%

What is your opinion of Annie Kuster?				
		Favorable	Unfavorable	No Opinion
Gender	Female	51%	40%	9%
	Male	31%	59%	10%
Age	18-34	27%	61%	12%
	35-54	32%	55%	13%
	55-64	43%	48%	8%
	65+	60%	33%	7%
Education	High School or Less	36%	58%	6%
	Some College/Associates Degree	27%	61%	11%
	College Graduate	50%	36%	14%
	Graduate/Professional School	54%	40%	6%
Ideology	Very Conservative	2%	91%	7%
	Somewhat Conservative	16%	73%	11%
	Moderate	22%	67%	11%
	Somewhat Liberal	80%	11%	9%
	Very Liberal	84%	6%	9%
Party Registration	Democratic	77%	15%	8%
	Republican	5%	84%	11%
	Undeclared	40%	50%	10%
Party Identification	Democratic	77%	15%	8%
	Republican	7%	83%	11%
	Swing	16%	71%	14%
Region	North Country/Lakes		100%	
	Monadnock/Dartmouth	44%	49%	7%
	Merrimack Valley	43%	47%	10%
	Seacoast/Border	43%	35%	22%
Total		41%	49%	10%

### What is your opinion of Annie Kuster?

		Strongly Favorable	Somewhat Favorable	Somewhat Unfavorable	Strongly Unfavorable	No Opinion	Never Heard Of
Gender	Female	25%	26%	6%	34%	7%	3%
	Male	15%	16%	14%	45%	7%	3%
Age	18-34	5%	22%	11%	50%	4%	9%
	35-54	14%	18%	14%	41%	10%	3%
	55-64	23%	20%	8%	40%	6%	2%
	65+	36%	24%	5%	28%	6%	
Education	High School or Less	10%	26%	5%	53%	2%	3%
	Some College/Associates Degree	13%	15%	16%	45%	9%	2%
	College Graduate	20%	29%	4%	32%	9%	4%
	Graduate/Professional School	37%	17%	11%	30%	4%	2%
Ideology	Very Conservative		2%	8%	81%	3%	5%
	Somewhat Conservative	3%	13%	20%	53%	7%	4%
	Moderate	8%	14%	9%	59%	9%	2%
	Somewhat Liberal	49%	31%	5%	6%	9%	1%
	Very Liberal	37%	46%	4%	3%	6%	3%
Party Registration	Democratic	49%	28%	3%	12%	6%	2%
	Republican	1%	4%	16%	68%	6%	5%
	Undeclared	12%	28%	10%	39%	8%	2%
Party Identification	Democratic	41%	36%	4%	12%	7%	1%
	Republican	0%	6%	16%	66%	7%	4%
	Swing	3%	12%	10%	60%	9%	5%
Region	North Country/Lakes			36%	64%		
	Monadnock/Dartmouth	16%	28%	4%	46%	6%	1%
	Merrimack Valley	24%	19%	12%	35%	7%	3%
	Seacoast/Border	22%	22%	3%	31%	12%	10%
Total		20%	21%	10%	39%	7%	3%

What is your opinion of Don Bolduc?				
		Favorable	Unfavorable	No Opinion
Gender	Female	23%	18%	59%
	Male	29%	23%	48%
Age	18-34	16%	19%	66%
	35-54	26%	22%	52%
	55-64	30%	20%	50%
	65+	26%	20%	54%
Education	High School or Less	26%	18%	57%
	Some College/Associates Degree	32%	16%	52%
	College Graduate	25%	20%	54%
	Graduate/Professional School	18%	28%	54%
Ideology	Very Conservative	62%	3%	35%
	Somewhat Conservative	38%	11%	52%
	Moderate	29%	18%	54%
	Somewhat Liberal	3%	34%	63%
	Very Liberal		36%	64%
Party Registration	Democratic	6%	40%	55%
	Republican	48%	6%	46%
	Undeclared	23%	17%	60%
Party Identification	Democratic	4%	36%	60%
	Republican	48%	6%	46%
	Swing	24%	13%	64%
Congressional District	CD-1	26%	22%	52%
	CD-2	25%	19%	56%
Region	North Country/Lakes	32%	21%	47%
	Monadnock/Dartmouth	26%	23%	50%
	Merrimack Valley	24%	19%	57%
	Seacoast/Border	26%	20%	54%
Total		26%	20%	54%

### What is your opinion of Don Bolduc?

		Strongly Favorable	Somewhat Favorable	Somewhat Unfavorable	Strongly Unfavorable	No Opinion	Never Heard Of
Gender	Female	12%	11%	6%	12%	20%	39%
	Male	14%	15%	6%	17%	20%	28%
Age	18-34	9%	7%	3%	16%	9%	57%
	35-54	16%	10%	6%	15%	22%	30%
	55-64	15%	15%	7%	13%	20%	30%
	65+	10%	17%	5%	15%	26%	27%
Education	High School or Less	12%	14%	3%	15%	19%	37%
	Some College/Associates Degree	16%	15%	6%	10%	20%	32%
	College Graduate	14%	12%	5%	15%	22%	33%
	Graduate/Professional School	8%	10%	8%	20%	20%	34%
Ideology	Very Conservative	41%	20%	3%	1%	16%	19%
	Somewhat Conservative	16%	21%	6%	4%	24%	27%
	Moderate	9%	20%	6%	12%	20%	35%
	Somewhat Liberal	2%	2%	8%	26%	24%	39%
	Very Liberal			5%	31%	14%	49%
Party Registration	Democratic	1%	4%	6%	34%	18%	36%
	Republican	27%	21%	4%	2%	23%	23%
	Undeclared	10%	13%	7%	10%	20%	40%
Party Identification	Democratic	1%	3%	7%	29%	19%	41%
	Republican	25%	23%	4%	2%	23%	23%
	Swing	13%	11%	7%	6%	16%	48%
Congressional District	CD-1	13%	14%	6%	16%	22%	30%
	CD-2	13%	12%	6%	13%	18%	38%
Region	North Country/Lakes	18%	14%	7%	14%	21%	27%
	Monadnock/Dartmouth	12%	15%	9%	14%	17%	33%
	Merrimack Valley	12%	12%	4%	16%	21%	35%
	Seacoast/Border	12%	13%	6%	14%	21%	34%
Total		13%	13%	6%	14%	20%	33%

What is your opinion of Chuck Morse?				
		Favorable	Unfavorable	No Opinion
Gender	Female	9%	20%	71%
	Male	15%	16%	69%
Age	18-34	8%	16%	76%
	35-54	11%	20%	69%
	55-64	15%	18%	67%
	65+	12%	17%	71%
Education	High School or Less	12%	14%	74%
	Some College/Associates Degree	12%	18%	70%
	College Graduate	13%	18%	69%
	Graduate/Professional School	10%	21%	68%
Ideology	Very Conservative	21%	13%	66%
	Somewhat Conservative	20%	14%	67%
	Moderate	12%	15%	73%
	Somewhat Liberal	3%	25%	72%
	Very Liberal	2%	24%	74%
Party Registration	Democratic	3%	30%	67%
	Republican	22%	12%	67%
	Undeclared	11%	14%	76%
Party Identification	Democratic	2%	25%	72%
	Republican	22%	12%	66%
	Swing	9%	12%	80%
Congressional District	CD-1	12%	17%	71%
	CD-2	11%	19%	70%
Region	North Country/Lakes	10%	16%	74%
	Monadnock/Dartmouth	11%	18%	71%
	Merrimack Valley	11%	20%	70%
	Seacoast/Border	14%	17%	69%
Total		12%	18%	70%

### What is your opinion of Chuck Morse?

		Strongly Favorable	Somewhat Favorable	Somewhat Unfavorable	Strongly Unfavorable	No Opinion	Never Heard Of
Gender	Female	3%	6%	7%	13%	24%	47%
	Male	3%	11%	7%	9%	23%	46%
Age	18-34	1%	7%	4%	12%	11%	65%
	35-54	3%	8%	7%	13%	24%	45%
	55-64	4%	11%	9%	9%	23%	45%
	65+	2%	10%	7%	10%	31%	41%
Education	High School or Less	5%	6%	7%	6%	27%	48%
	Some College/Associates Degree	2%	10%	7%	11%	24%	46%
	College Graduate	3%	10%	6%	12%	23%	46%
	Graduate/Professional School	2%	9%	8%	14%	20%	48%
Ideology	Very Conservative	8%	13%	7%	6%	28%	38%
	Somewhat Conservative	5%	15%	6%	7%	27%	40%
	Moderate	2%	10%	5%	10%	26%	47%
	Somewhat Liberal	0%	3%	10%	15%	20%	52%
	Very Liberal		2%	6%	19%	14%	60%
Party Registration	Democratic		3%	8%	22%	20%	47%
	Republican	6%	16%	7%	5%	28%	38%
	Undeclared	2%	8%	6%	8%	22%	54%
Party Identification	Democratic	0%	2%	8%	17%	21%	52%
	Republican	6%	16%	6%	6%	26%	39%
	Swing		9%	8%	4%	20%	59%
Congressional District	CD-1	3%	9%	7%	10%	25%	46%
	CD-2	3%	9%	7%	12%	22%	48%
Region	North Country/Lakes	1%	8%	2%	14%	25%	49%
	Monadnock/Dartmouth		11%	6%	12%	26%	45%
	Merrimack Valley	3%	8%	7%	12%	22%	48%
	Seacoast/Border	4%	10%	9%	8%	23%	46%
Total		3%	9%	7%	11%	23%	47%

What is your opinion of Kevin Smith?				
		Favorable	Unfavorable	No Opinion
Gender	Female	6%	10%	84%
	Male	9%	8%	82%
Age	18-34	4%	5%	91%
	35-54	11%	9%	80%
	55-64	7%	11%	82%
	65+	6%	9%	84%
Education	High School or Less	5%	7%	87%
	Some College/Associates Degree	10%	6%	84%
	College Graduate	9%	13%	79%
	Graduate/Professional School	6%	10%	84%
Ideology	Very Conservative	14%	2%	84%
	Somewhat Conservative	13%	3%	84%
	Moderate	6%	10%	85%
	Somewhat Liberal	3%	17%	80%
	Very Liberal	3%	13%	84%
Party Registration	Democratic	3%	19%	78%
	Republican	13%	3%	84%
	Undeclared	8%	6%	86%
Party Identification	Democratic	2%	16%	81%
	Republican	14%	3%	83%
	Swing	4%	3%	93%
Congressional District	CD-1	9%	10%	82%
	CD-2	7%	8%	85%
Region	North Country/Lakes	7%	8%	85%
	Monadnock/Dartmouth	7%	10%	83%
	Merrimack Valley	7%	8%	84%
	Seacoast/Border	9%	10%	81%
Total		8%	9%	83%



### What is your opinion of Kevin Smith?

		Strongly Favorable	Somewhat Favorable	Somewhat Unfavorable	Strongly Unfavorable	No Opinion	Never Heard Of
Gender	Female	1%	5%	3%	7%	23%	61%
	Male	1%	8%	3%	5%	25%	57%
Age	18-34	1%	4%	1%	4%	16%	75%
	35-54	1%	10%	3%	6%	24%	56%
	55-64	1%	7%	4%	8%	20%	61%
	65+	2%	4%	3%	6%	34%	51%
Education	High School or Less	1%	4%	2%	5%	31%	57%
	Some College/Associates Degree	1%	9%	2%	4%	25%	59%
	College Graduate	1%	7%	4%	9%	20%	59%
	Graduate/Professional School	1%	5%	4%	6%	24%	61%
Ideology	Very Conservative	3%	10%	2%	1%	24%	60%
	Somewhat Conservative	2%	11%	2%	1%	27%	57%
	Moderate	1%	5%	4%	7%	28%	57%
	Somewhat Liberal		3%	4%	13%	21%	59%
	Very Liberal		3%	4%	10%	20%	64%
Party Registration	Democratic		3%	4%	15%	25%	53%
	Republican	3%	11%	2%	1%	25%	59%
	Undeclared	1%	7%	3%	3%	23%	63%
Party Identification	Democratic		2%	4%	12%	24%	58%
	Republican	3%	12%	2%	1%	25%	59%
	Swing		4%	2%	1%	25%	69%
Congressional District	CD-1	1%	7%	2%	7%	25%	57%
	CD-2	1%	6%	3%	5%	23%	61%
Region	North Country/Lakes		7%	1%	8%	24%	60%
	Monadnock/Dartmouth		7%	3%	7%	25%	58%
	Merrimack Valley	1%	6%	3%	5%	24%	60%
	Seacoast/Border	2%	7%	3%	6%	23%	58%
Total		1%	7%	3%	6%	24%	59%

Do you approve or disapprove of the way President Joe Biden is doing his job?				
		Approve	Disapprove	No Opinion
Gender	Female	46%	53%	1%
	Male	33%	67%	
Age	18-34	24%	76%	
	35-54	34%	65%	1%
	55-64	42%	58%	0%
	65+	54%	45%	1%
Education	High School or Less	34%	65%	1%
	Some College/Associates Degree	29%	71%	0%
	College Graduate	41%	58%	1%
	Graduate/Professional School	58%	41%	0%
Ideology	Very Conservative	1%	98%	1%
	Somewhat Conservative	11%	88%	1%
	Moderate	27%	72%	1%
	Somewhat Liberal	83%	17%	
	Very Liberal	75%	24%	1%
Party Registration	Democratic	81%	19%	1%
	Republican	4%	95%	1%
	Undeclared	37%	63%	0%
Party Identification	Democratic	79%	21%	0%
	Republican	4%	95%	1%
	Swing	20%	79%	1%
Congressional District	CD-1	39%	60%	0%
	CD-2	41%	59%	1%
Region	North Country/Lakes	30%	69%	2%
	Monadnock/Dartmouth	43%	57%	
	Merrimack Valley	44%	56%	1%
	Seacoast/Border	37%	62%	0%
Total		40%	60%	0%

## Do you approve or disapprove of the way President Joe Biden is doing his job?

		Strongly Approve	Somewhat Approve	Somewhat Disapprove	Strongly Disapprove	No Opinion	Never Heard Of
Gender	Female	23%	22%	8%	45%	1%	0%
	Male	13%	20%	7%	60%		
Age	18-34	5%	19%	22%	54%		
	35-54	15%	20%	8%	57%	1%	1%
	55-64	21%	21%	3%	55%	0%	
	65+	29%	25%	4%	41%	1%	
Education	High School or Less	11%	24%	9%	55%	1%	
	Some College/Associates Degree	17%	12%	8%	63%	0%	
	College Graduate	19%	23%	8%	50%	0%	1%
	Graduate/Professional School	26%	33%	5%	36%	0%	
Ideology	Very Conservative	1%	1%	1%	97%	1%	
	Somewhat Conservative	3%	8%	6%	81%	1%	
	Moderate	13%	14%	8%	64%	1%	
	Somewhat Liberal	44%	38%	6%	11%		
	Very Liberal	27%	48%	19%	6%		1%
Party Registration	Democratic	43%	38%	8%	11%		1%
	Republican	1%	3%	4%	92%	1%	
	Undeclared	13%	24%	11%	52%	0%	
Party Identification	Democratic	39%	41%	11%	9%		0%
	Republican	1%	3%	3%	92%	1%	
	Swing	5%	15%	10%	70%	1%	
Congressional District	CD-1	20%	19%	8%	52%	0%	0%
	CD-2	17%	24%	7%	52%	1%	
Region	North Country/Lakes	18%	11%	6%	63%		2%
	Monadnock/Dartmouth	21%	22%	3%	54%		
	Merrimack Valley	18%	26%	9%	47%	1%	
	Seacoast/Border	18%	20%	9%	54%	0%	
Total		18%	22%	8%	52%	0%	0%

Do you approve or disapprove of the way Governor Chris Sununu is doing his job?				
		Approve	Disapprove	No Opinion
Gender	Female	46%	52%	2%
	Male	65%	34%	1%
Age	18-34	50%	46%	4%
	35-54	54%	45%	1%
	55-64	56%	43%	1%
	65+	59%	40%	1%
Education	High School or Less	61%	39%	
	Some College/Associates Degree	59%	39%	2%
	College Graduate	54%	44%	2%
	Graduate/Professional School	46%	53%	1%
Ideology	Very Conservative	73%	27%	
	Somewhat Conservative	81%	18%	1%
	Moderate	60%	38%	3%
	Somewhat Liberal	37%	62%	1%
	Very Liberal	14%	82%	4%
Party Registration	Democratic	24%	74%	2%
	Republican	81%	18%	1%
	Undeclared	58%	40%	2%
Party Identification	Democratic	29%	69%	2%
	Republican	80%	19%	1%
	Swing	65%	34%	1%
Congressional District	CD-1	59%	40%	2%
	CD-2	51%	48%	1%
Region	North Country/Lakes	66%	33%	2%
	Monadnock/Dartmouth	47%	52%	2%
	Merrimack Valley	53%	47%	1%
	Seacoast/Border	59%	39%	2%
Total		55%	43%	1%

**Do you approve or disapprove of the way Governor Chris Sununu is doing his job?**

		Strongly Approve	Somewhat Approve	Somewhat Disapprove	Strongly Disapprove	No Opinion
Gender	Female	23%	22%	22%	31%	2%
	Male	33%	32%	17%	17%	1%
Age	18-34	30%	20%	15%	31%	4%
	35-54	26%	28%	18%	27%	1%
	55-64	26%	30%	22%	21%	1%
	65+	32%	28%	20%	20%	1%
Education	High School or Less	33%	28%	19%	20%	
	Some College/Associates Degree	33%	26%	13%	26%	2%
	College Graduate	26%	28%	20%	24%	2%
	Graduate/Professional School	20%	26%	28%	25%	1%
Ideology	Very Conservative	42%	31%	14%	13%	
	Somewhat Conservative	49%	32%	8%	11%	1%
	Moderate	30%	29%	18%	19%	3%
	Somewhat Liberal	10%	28%	32%	30%	1%
	Very Liberal	3%	10%	26%	56%	4%
Party Registration	Democratic	8%	16%	29%	45%	2%
	Republican	46%	35%	9%	9%	1%
	Undeclared	29%	30%	20%	20%	2%
Party Identification	Democratic	9%	19%	30%	40%	2%
	Republican	45%	35%	10%	9%	1%
	Swing	38%	26%	15%	20%	1%
Congressional District	CD-1	28%	31%	18%	22%	2%
	CD-2	28%	23%	21%	27%	1%
Region	North Country/Lakes	39%	27%	17%	16%	2%
	Monadnock/Dartmouth	31%	16%	26%	26%	2%
	Merrimack Valley	27%	25%	19%	28%	1%
	Seacoast/Border	25%	34%	18%	21%	2%
Total		28%	27%	19%	24%	1%

Do you approve or disapprove of the way Senator Jeanne Shaheen is doing her job?				
		Approve	Disapprove	No Opinion
Gender	Female	54%	42%	4%
	Male	39%	56%	5%
Age	18-34	38%	53%	8%
	35-54	39%	56%	5%
	55-64	45%	50%	5%
	65+	62%	36%	2%
Education	High School or Less	45%	50%	4%
	Some College/Associates Degree	36%	59%	5%
	College Graduate	49%	46%	4%
	Graduate/Professional School	61%	35%	4%
Ideology	Very Conservative	6%	90%	5%
	Somewhat Conservative	23%	73%	4%
	Moderate	34%	60%	5%
	Somewhat Liberal	85%	10%	5%
	Very Liberal	81%	15%	4%
Party Registration	Democratic	83%	14%	3%
	Republican	11%	84%	5%
	Undeclared	46%	47%	6%
Party Identification	Democratic	84%	12%	3%
	Republican	12%	83%	5%
	Swing	27%	65%	8%
Congressional District	CD-1	47%	48%	5%
	CD-2	46%	50%	4%
Region	North Country/Lakes	38%	55%	7%
	Monadnock/Dartmouth	44%	55%	1%
	Merrimack Valley	51%	45%	4%
	Seacoast/Border	45%	48%	7%
Total		47%	49%	5%

## Do you approve or disapprove of the way Senator Jeanne Shaheen is doing her job?

		Strongly Approve	Somewhat Approve	Somewhat Disapprove	Strongly Disapprove	No Opinion	Never Heard Of
Gender	Female	37%	17%	10%	32%	4%	
	Male	18%	21%	17%	39%	4%	1%
Age	18-34	13%	26%	15%	38%	7%	1%
	35-54	21%	18%	18%	38%	5%	0%
	55-64	31%	14%	11%	39%	5%	
	65+	42%	20%	11%	25%	2%	0%
Education	High School or Less	25%	20%	11%	39%	4%	
	Some College/Associates Degree	21%	14%	18%	41%	5%	0%
	College Graduate	28%	21%	13%	33%	4%	0%
	Graduate/Professional School	40%	21%	9%	26%	4%	
Ideology	Very Conservative		6%	14%	76%	4%	1%
	Somewhat Conservative	8%	15%	21%	52%	4%	1%
	Moderate	19%	15%	13%	47%	5%	
	Somewhat Liberal	60%	25%	6%	4%	5%	
	Very Liberal	49%	33%	13%	2%	4%	
Party Registration	Democratic	61%	22%	7%	7%	3%	
	Republican	2%	10%	19%	65%	4%	1%
	Undeclared	23%	24%	14%	33%	6%	0%
Party Identification	Democratic	57%	27%	7%	6%	3%	
	Republican	1%	10%	20%	63%	5%	0%
	Swing	11%	17%	16%	49%	7%	1%
Congressional District	CD-1	27%	20%	13%	34%	5%	0%
	CD-2	29%	17%	14%	36%	4%	0%
Region	North Country/Lakes	24%	14%	13%	42%	7%	
	Monadnock/Dartmouth	27%	17%	15%	39%	1%	
	Merrimack Valley	30%	21%	12%	33%	4%	0%
	Seacoast/Border	26%	19%	15%	33%	6%	0%
Total		28%	19%	14%	35%	4%	0%

Do you approve or disapprove of the way Senator Maggie Hassan is doing her job?				
		Approve	Disapprove	No Opinion
Gender	Female	52%	41%	7%
	Male	35%	60%	5%
Age	18-34	37%	54%	10%
	35-54	37%	57%	6%
	55-64	42%	51%	7%
	65+	58%	40%	2%
Education	High School or Less	44%	51%	5%
	Some College/Associates Degree	34%	60%	5%
	College Graduate	43%	49%	7%
	Graduate/Professional School	59%	36%	5%
Ideology	Very Conservative	5%	92%	3%
	Somewhat Conservative	18%	77%	5%
	Moderate	30%	63%	7%
	Somewhat Liberal	83%	9%	7%
	Very Liberal	81%	12%	7%
Party Registration	Democratic	83%	13%	3%
	Republican	7%	87%	5%
	Undeclared	43%	49%	8%
Party Identification	Democratic	83%	12%	5%
	Republican	8%	86%	6%
	Swing	22%	68%	11%
Congressional District	CD-1	45%	50%	5%
	CD-2	42%	51%	7%
Region	North Country/Lakes	36%	60%	5%
	Monadnock/Dartmouth	44%	55%	2%
	Merrimack Valley	47%	46%	6%
	Seacoast/Border	43%	50%	8%
Total		44%	50%	6%



## Do you approve or disapprove of the way Senator Maggie Hassan is doing her job?

		Strongly Approve	Somewhat Approve	Somewhat Disapprove	Strongly Disapprove	No Opinion	Never Heard Of
Gender	Female	33%	19%	8%	33%	6%	1%
	Male	15%	20%	16%	45%	4%	0%
Age	18-34	11%	25%	15%	38%	9%	1%
	35-54	19%	18%	15%	41%	6%	0%
	55-64	26%	16%	10%	41%	6%	1%
	65+	37%	21%	8%	32%	1%	1%
Education	High School or Less	20%	23%	8%	43%	4%	1%
	Some College/Associates Degree	20%	14%	14%	46%	4%	1%
	College Graduate	22%	21%	13%	36%	7%	0%
	Graduate/Professional School	37%	22%	10%	26%	5%	
Ideology	Very Conservative		5%	9%	83%	3%	
	Somewhat Conservative	5%	13%	22%	55%	4%	1%
	Moderate	14%	16%	9%	53%	7%	
	Somewhat Liberal	53%	30%	5%	4%	6%	1%
	Very Liberal	47%	34%	10%	2%	6%	1%
Party Registration	Democratic	57%	26%	5%	8%	3%	
	Republican	1%	6%	18%	70%	5%	1%
	Undeclared	17%	25%	12%	37%	7%	1%
Party Identification	Democratic	51%	32%	6%	6%	5%	1%
	Republican	1%	7%	17%	69%	5%	0%
	Swing	8%	14%	18%	50%	9%	2%
Congressional District	CD-1	26%	19%	12%	38%	5%	0%
	CD-2	23%	20%	11%	39%	6%	1%
Region	North Country/Lakes	25%	10%	14%	46%	5%	
	Monadnock/Dartmouth	22%	21%	11%	44%	2%	
	Merrimack Valley	26%	21%	11%	35%	5%	1%
	Seacoast/Border	23%	20%	12%	37%	7%	0%
Total		24%	20%	12%	38%	5%	0%

## Do you approve or disapprove of the way Congressman Chris Pappas is doing his job?

		Approve	Disapprove	No Opinion
Gender	Female	49%	41%	9%
	Male	36%	52%	12%
Age	18-34	47%	43%	10%
	35-54	39%	47%	14%
	55-64	38%	51%	11%
	65+	50%	43%	7%
Education	High School or Less	38%	56%	6%
	Some College/Associates Degree	37%	51%	13%
	College Graduate	41%	47%	11%
	Graduate/Professional School	59%	30%	11%
Ideology	Very Conservative	2%	91%	7%
	Somewhat Conservative	16%	74%	9%
	Moderate	33%	50%	17%
	Somewhat Liberal	82%	8%	9%
	Very Liberal	80%	7%	13%
Party Registration	Democratic	80%	10%	10%
	Republican	9%	81%	10%
	Undeclared	44%	44%	12%
Party Identification	Democratic	80%	9%	11%
	Republican	11%	79%	10%
	Swing	31%	58%	11%
Region	North Country/Lakes	39%	46%	15%
	Monadnock/Dartmouth	75%	25%	
	Merrimack Valley	49%	45%	6%
	Seacoast/Border	41%	48%	12%
Total		43%	46%	11%

## Do you approve or disapprove of the way Congressman Chris Pappas is doing his job?

		Strongly Approve	Somewhat Approve	Somewhat Disapprove	Strongly Disapprove	No Opinion	Never Heard Of
Gender	Female	30%	19%	9%	32%	9%	1%
	Male	14%	21%	16%	36%	10%	3%
Age	18-34	13%	35%	22%	20%	8%	2%
	35-54	21%	18%	14%	33%	10%	3%
	55-64	24%	14%	10%	40%	11%	1%
	65+	29%	21%	9%	34%	7%	
Education	High School or Less	17%	21%	11%	44%	3%	3%
	Some College/Associates Degree	21%	15%	17%	34%	11%	2%
	College Graduate	19%	23%	11%	36%	10%	1%
	Graduate/Professional School	35%	24%	9%	21%	11%	
Ideology	Very Conservative		2%	9%	81%	7%	
	Somewhat Conservative	4%	12%	22%	53%	7%	2%
	Moderate	13%	21%	15%	35%	11%	5%
	Somewhat Liberal	51%	31%	6%	2%	9%	
	Very Liberal	45%	35%	7%		13%	
Party Registration	Democratic	53%	27%	8%	3%	10%	
	Republican	1%	8%	15%	66%	8%	2%
	Undeclared	18%	26%	15%	29%	10%	2%
Party Identification	Democratic	50%	30%	7%	2%	11%	
	Republican	1%	10%	15%	64%	7%	3%
	Swing	7%	24%	26%	30%	11%	2%
Region	North Country/Lakes	28%	11%	10%	35%	15%	
	Monadnock/Dartmouth	75%			25%		
	Merrimack Valley	23%	25%	10%	35%	6%	
	Seacoast/Border	20%	20%	14%	33%	9%	3%
Total		23%	20%	13%	34%	9%	2%

## Do you approve or disapprove of the way Congresswoman Annie Kuster is doing her job?

		Approve	Disapprove	No Opinion
Gender	Female	51%	40%	9%
	Male	28%	56%	15%
Age	18-34	28%	57%	15%
	35-54	30%	54%	16%
	55-64	43%	47%	10%
	65+	58%	34%	7%
Education	High School or Less	28%	53%	18%
	Some College/Associates Degree	29%	62%	9%
	College Graduate	49%	37%	14%
	Graduate/Professional School	54%	36%	10%
Ideology	Very Conservative	3%	90%	7%
	Somewhat Conservative	16%	70%	14%
	Moderate	26%	64%	10%
	Somewhat Liberal	77%	11%	12%
	Very Liberal	77%	7%	16%
Party Registration	Democratic	76%	14%	10%
	Republican	5%	81%	14%
	Undeclared	38%	49%	13%
Party Identification	Democratic	74%	14%	12%
	Republican	7%	81%	12%
	Swing	16%	70%	14%
Region	North Country/Lakes	4%	96%	
	Monadnock/Dartmouth	40%	52%	8%
	Merrimack Valley	44%	44%	12%
	Seacoast/Border	39%	34%	27%
Total		40%	48%	12%

## Do you approve or disapprove of the way Congresswoman Annie Kuster is doing her job?

		Strongly Approve	Somewhat Approve	Somewhat Disapprove	Strongly Disapprove	No Opinion	Never Heard Of
Gender	Female	27%	24%	8%	32%	9%	1%
	Male	13%	15%	12%	45%	14%	2%
Age	18-34	7%	22%	10%	48%	9%	5%
	35-54	15%	15%	14%	40%	15%	1%
	55-64	22%	21%	7%	40%	10%	
	65+	36%	23%	7%	28%	7%	
Education	High School or Less	8%	20%	2%	51%	18%	
	Some College/Associates Degree	15%	13%	17%	46%	8%	1%
	College Graduate	24%	25%	6%	31%	11%	2%
	Graduate/Professional School	33%	21%	8%	28%	9%	1%
Ideology	Very Conservative		3%	15%	75%	6%	1%
	Somewhat Conservative	5%	11%	16%	53%	11%	3%
	Moderate	11%	16%	7%	58%	8%	1%
	Somewhat Liberal	48%	28%	6%	6%	12%	
	Very Liberal	36%	41%	4%	3%	16%	
Party Registration	Democratic	50%	25%	3%	12%	10%	
	Republican	1%	4%	16%	66%	11%	2%
	Undeclared	12%	26%	10%	39%	11%	1%
Party Identification	Democratic	42%	32%	3%	11%	11%	
	Republican	0%	6%	16%	65%	10%	2%
	Swing	3%	12%	14%	57%	10%	3%
Region	North Country/Lakes		4%	23%	73%		
	Monadnock/Dartmouth	18%	22%	8%	44%	8%	
	Merrimack Valley	23%	20%	10%	34%	11%	1%
	Seacoast/Border	25%	14%	8%	25%	22%	5%
Total		21%	19%	10%	38%	11%	1%

When thinking about voting for candidates, which one of the below issues is most important to you?

		Economy/ Jobs	Government Spending/ Taxes	Environ- ment	National Security	COVID	Immi- gration	Abortion	Elections	Crime/ Drug Use	Indiv- idual Rights	Educ- ation	Health Care	Other
Gender	Female	18%	14%	14%	9%	10%	6%	6%	5%	1%	2%	3%	0%	11%
	Male	27%	21%	12%	10%	5%	7%	4%	3%	2%	1%	0%	1%	6%
Age	18-34	21%	13%	16%	4%	8%	5%	5%	1%	3%	3%	8%		13%
	35-54	28%	18%	11%	9%	8%	3%	5%	5%	2%	2%	1%	2%	8%
	55-64	21%	23%	9%	10%	8%	9%	4%	6%	1%	1%			8%
	65+	19%	14%	18%	13%	8%	10%	7%	3%	1%				8%
Education	High School or Less	29%	20%	6%	11%	5%	7%	4%	1%		1%		2%	13%
	Some College/ Associates Degree	18%	18%	10%	11%	9%	8%	5%	3%	2%	2%	3%	0%	9%
	College Graduate	22%	18%	16%	9%	6%	7%	6%	5%	1%	1%	1%		7%
	Graduate/ Professional School	24%	13%	19%	7%	10%	4%	5%	6%	1%	1%	1%		7%
Ideology	Very Conservative	20%	31%		17%	2%	11%	4%	5%	3%	2%			6%
	Somewhat Conservative	28%	30%	2%	9%	5%	12%	3%	2%	3%	0%	0%		6%
	Moderate	21%	14%	6%	18%	4%	7%	1%	4%	0%	6%	6%		12%
	Somewhat Liberal	27%	6%	21%	4%	17%	1%	9%	6%	0%	1%	0%		10%
	Very Liberal	9%	5%	41%	1%	9%	2%	9%	4%	1%	1%	2%	4%	11%
Party Registration	Democratic	20%	6%	26%	6%	14%	2%	9%	5%	1%	2%	1%	2%	8%
	Republican	25%	29%	1%	13%	3%	13%	2%	2%	2%	2%	0%		7%
	Undeclared	23%	17%	13%	9%	7%	6%	5%	5%	2%	0%	3%		11%
Party Identification	Democratic	20%	6%	26%	5%	13%	1%	8%	5%	1%	1%	1%	1%	11%
	Republican	26%	29%	1%	12%	4%	13%	2%	3%	2%	2%	0%		7%
	Swing	19%	21%	5%	20%	2%	5%	2%	7%	1%	1%	12%		7%
Congressional District	CD-1	25%	18%	11%	9%	9%	8%	5%	4%	2%	2%	0%		7%
	CD-2	19%	16%	15%	10%	7%	6%	5%	5%	1%	1%	3%	1%	11%
Region	North Country/Lakes	23%	17%	6%	15%	9%	7%	4%	3%			9%		7%
	Monadnock/ Dartmouth	18%	18%	11%	17%	6%	8%	6%	5%	1%	1%		3%	9%
	Merrimack Valley	21%	14%	15%	8%	9%	6%	7%	5%	2%	1%	1%	0%	12%
	Seacoast/ Border	27%	22%	13%	7%	8%	7%	3%	4%	2%	2%	0%		5%
Total		22%	17%	13%	9%	8%	7%	5%	4%	1%	1%	1%	1%	9%

## Do you approve or disapprove of Governor Sununu's handling of COVID issues?

		Approve	Disapprove	Unsure
Gender	Female	55%	42%	3%
	Male	69%	29%	2%
Age	18-34	57%	39%	4%
	35-54	57%	40%	3%
	55-64	63%	35%	3%
	65+	68%	30%	2%
Education	High School or Less	68%	32%	
	Some College/Associates Degree	63%	35%	3%
	College Graduate	61%	36%	4%
	Graduate/Professional School	56%	41%	3%
Ideology	Very Conservative	70%	30%	
	Somewhat Conservative	79%	18%	2%
	Moderate	62%	33%	4%
	Somewhat Liberal	57%	42%	1%
	Very Liberal	27%	67%	6%
Party Registration	Democratic	40%	55%	4%
	Republican	77%	21%	2%
	Undeclared	66%	33%	2%
Party Identification	Democratic	46%	51%	3%
	Republican	76%	22%	2%
	Swing	70%	28%	2%
Congressional District	CD-1	64%	34%	2%
	CD-2	59%	38%	3%
Region	North Country/Lakes	69%	30%	2%
	Monadnock/Dartmouth	54%	42%	4%
	Merrimack Valley	61%	37%	2%
	Seacoast/Border	64%	33%	3%
Total		62%	36%	3%

## Do you approve or disapprove of Governor Sununu's handling of COVID issues?

		Strongly Approve	Somewhat Approve	Somewhat Disapprove	Strongly Disapprove	Unsure
Gender	Female	25%	30%	21%	21%	3%
	Male	30%	38%	16%	14%	2%
Age	18-34	27%	30%	13%	27%	4%
	35-54	27%	30%	18%	22%	3%
	55-64	25%	38%	22%	13%	3%
	65+	30%	38%	19%	10%	2%
Education	High School or Less	32%	36%	15%	17%	
	Some College/Associates Degree	31%	32%	15%	19%	3%
	College Graduate	26%	35%	20%	15%	4%
	Graduate/Professional School	21%	34%	24%	18%	3%
Ideology	Very Conservative	34%	36%	16%	14%	
	Somewhat Conservative	40%	39%	11%	8%	2%
	Moderate	34%	28%	14%	19%	4%
	Somewhat Liberal	16%	41%	24%	18%	1%
	Very Liberal	8%	19%	33%	35%	6%
Party Registration	Democratic	14%	27%	27%	29%	4%
	Republican	39%	38%	12%	9%	2%
	Undeclared	29%	37%	18%	15%	2%
Party Identification	Democratic	16%	30%	26%	25%	3%
	Republican	37%	39%	13%	9%	2%
	Swing	38%	31%	10%	19%	2%
Congressional District	CD-1	29%	35%	19%	15%	2%
	CD-2	25%	33%	18%	21%	3%
Region	North Country/Lakes	33%	36%	14%	16%	2%
	Monadnock/Dartmouth	26%	28%	18%	24%	4%
	Merrimack Valley	26%	34%	17%	20%	2%
	Seacoast/Border	27%	37%	22%	11%	3%
Total		27%	34%	19%	17%	3%



Do you approve or disapprove of President Biden's handling of COVID issues?				
		Approve	Disapprove	Unsure
Gender	Female	47%	52%	1%
	Male	35%	64%	1%
Age	18-34	27%	73%	
	35-54	36%	62%	2%
	55-64	43%	57%	1%
	65+	55%	44%	1%
Education	High School or Less	34%	64%	2%
	Some College/Associates Degree	31%	68%	1%
	College Graduate	43%	57%	0%
	Graduate/Professional School	60%	39%	1%
Ideology	Very Conservative	3%	96%	1%
	Somewhat Conservative	13%	86%	1%
	Moderate	31%	69%	1%
	Somewhat Liberal	85%	14%	1%
	Very Liberal	70%	27%	3%
Party Registration	Democratic	81%	18%	2%
	Republican	5%	94%	1%
	Undeclared	40%	59%	1%
Party Identification	Democratic	80%	18%	1%
	Republican	5%	94%	1%
	Swing	23%	76%	1%
Congressional District	CD-1	42%	57%	0%
	CD-2	40%	58%	2%
Region	North Country/Lakes	34%	66%	
	Monadnock/Dartmouth	40%	55%	4%
	Merrimack Valley	45%	55%	1%
	Seacoast/Border	40%	60%	0%
Total		41%	58%	1%

## Do you approve or disapprove of President Biden's handling of COVID issues?

		Strongly Approve	Somewhat Approve	Somewhat Disapprove	Strongly Disapprove	Unsure
Gender	Female	26%	21%	10%	42%	1%
	Male	13%	21%	10%	54%	1%
Age	18-34	5%	22%	25%	48%	
	35-54	15%	21%	8%	54%	2%
	55-64	24%	19%	7%	50%	1%
	65+	32%	23%	7%	37%	1%
Education	High School or Less	16%	18%	11%	52%	2%
	Some College/Associates Degree	19%	12%	12%	56%	1%
	College Graduate	18%	25%	11%	45%	0%
	Graduate/Professional School	27%	33%	6%	33%	1%
Ideology	Very Conservative	1%	2%	3%	93%	1%
	Somewhat Conservative	5%	8%	14%	72%	1%
	Moderate	16%	15%	9%	59%	0%
	Somewhat Liberal	44%	41%	5%	9%	1%
	Very Liberal	32%	38%	22%	5%	3%
Party Registration	Democratic	45%	35%	8%	10%	2%
	Republican	1%	4%	10%	84%	1%
	Undeclared	16%	24%	13%	47%	1%
Party Identification	Democratic	40%	40%	10%	8%	1%
	Republican	1%	4%	10%	84%	1%
	Swing	10%	13%	13%	64%	1%
Congressional District	CD-1	22%	20%	10%	47%	0%
	CD-2	18%	22%	11%	47%	2%
Region	North Country/Lakes	20%	14%	10%	56%	
	Monadnock/Dartmouth	17%	24%	7%	49%	4%
	Merrimack Valley	21%	24%	11%	43%	1%
	Seacoast/Border	21%	19%	12%	48%	0%
Total		20%	21%	10%	47%	1%

Do you approve or disapprove of President Biden's handling of the economy?				
		Approve	Disapprove	Unsure
Gender	Female	46%	52%	2%
	Male	33%	65%	2%
Age	18-34	29%	68%	3%
	35-54	35%	62%	3%
	55-64	40%	59%	1%
	65+	52%	46%	2%
Education	High School or Less	37%	60%	2%
	Some College/Associates Degree	28%	70%	1%
	College Graduate	41%	56%	3%
	Graduate/Professional School	58%	40%	1%
Ideology	Very Conservative	1%	99%	
	Somewhat Conservative	10%	89%	1%
	Moderate	32%	67%	0%
	Somewhat Liberal	83%	16%	1%
	Very Liberal	71%	20%	8%
Party Registration	Democratic	82%	16%	2%
	Republican	4%	96%	0%
	Undeclared	37%	60%	3%
Party Identification	Democratic	80%	17%	4%
	Republican	3%	96%	1%
	Swing	20%	79%	1%
Congressional District	CD-1	41%	58%	1%
	CD-2	39%	58%	3%
Region	North Country/Lakes	33%	67%	
	Monadnock/Dartmouth	38%	56%	6%
	Merrimack Valley	45%	54%	1%
	Seacoast/Border	38%	61%	1%
Total		40%	58%	2%

## Do you approve or disapprove of President Biden's handling of the economy?

		Strongly Approve	Somewhat Approve	Somewhat Disapprove	Strongly Disapprove	Unsure
Gender	Female	24%	22%	9%	43%	2%
	Male	13%	21%	8%	57%	2%
Age	18-34	5%	24%	23%	44%	3%
	35-54	15%	20%	7%	55%	3%
	55-64	20%	20%	4%	55%	1%
	65+	29%	23%	4%	42%	2%
Education	High School or Less	15%	22%	7%	53%	2%
	Some College/Associates Degree	16%	13%	12%	58%	1%
	College Graduate	18%	24%	7%	48%	3%
	Graduate/Professional School	27%	31%	5%	36%	1%
Ideology	Very Conservative	1%	1%	3%	96%	
	Somewhat Conservative	4%	6%	6%	83%	1%
	Moderate	12%	21%	13%	55%	1%
	Somewhat Liberal	42%	41%	5%	11%	1%
	Very Liberal	33%	39%	18%	2%	8%
Party Registration	Democratic	42%	40%	6%	10%	2%
	Republican	0%	4%	4%	92%	0%
	Undeclared	15%	22%	14%	47%	3%
Party Identification	Democratic	39%	41%	9%	7%	4%
	Republican	0%	3%	5%	91%	1%
	Swing	5%	15%	22%	58%	1%
Congressional District	CD-1	18%	23%	7%	51%	1%
	CD-2	19%	20%	10%	48%	3%
Region	North Country/Lakes	21%	11%	14%	54%	
	Monadnock/Dartmouth	21%	18%	2%	54%	6%
	Merrimack Valley	18%	26%	9%	45%	1%
	Seacoast/Border	17%	21%	8%	52%	1%
Total		19%	22%	8%	50%	2%

Congress is considering a bill intended to make voting more accessible, transparent and uniform by increasing federal authority and oversight over how states conduct elections. Would you be more likely or less likely to vote for an elected official that supports this bill?

		More Likely	Less Likely	Unsure
Gender	Female	53%	38%	9%
	Male	42%	52%	6%
Age	18-34	48%	41%	11%
	35-54	47%	44%	9%
	55-64	44%	50%	6%
	65+	54%	41%	5%
Education	High School or Less	39%	48%	12%
	Some College/Associates Degree	40%	52%	8%
	College Graduate	51%	42%	7%
	Graduate/Professional School	63%	33%	4%
Ideology	Very Conservative	6%	85%	9%
	Somewhat Conservative	21%	70%	10%
	Moderate	34%	53%	14%
	Somewhat Liberal	87%	9%	3%
	Very Liberal	92%	4%	4%
Party Registration	Democratic	86%	8%	6%
	Republican	11%	81%	8%
	Undeclared	48%	43%	9%
Party Identification	Democratic	87%	7%	6%
	Republican	12%	78%	9%
	Swing	27%	63%	10%
Congressional District	CD-1	49%	45%	7%
	CD-2	47%	44%	9%
Region	North Country/Lakes	41%	53%	5%
	Monadnock/Dartmouth	44%	45%	10%
	Merrimack Valley	51%	41%	8%
	Seacoast/Border	48%	44%	7%
Total		48%	44%	8%

Congress is considering a bill intended to make voting more accessible, transparent and uniform by increasing federal authority and oversight over how states conduct elections. Would you be more likely or less likely to vote for an elected official that supports this bill?

		Much More Likely	Somewhat More Likely	Somewhat Less Likely	Much Less Likely	Unsure
Gender	Female	40%	13%	4%	33%	9%
	Male	32%	11%	4%	47%	6%
Age	18-34	31%	16%	6%	35%	11%
	35-54	32%	15%	4%	40%	9%
	55-64	33%	11%	3%	46%	6%
	65+	46%	7%	5%	36%	5%
Education	High School or Less	29%	10%	6%	42%	12%
	Some College/Associates Degree	28%	12%	5%	47%	8%
	College Graduate	38%	13%	4%	38%	7%
	Graduate/Professional School	52%	11%	2%	31%	5%
Ideology	Very Conservative	4%	2%	3%	82%	9%
	Somewhat Conservative	9%	11%	8%	62%	10%
	Moderate	20%	14%	4%	49%	14%
	Somewhat Liberal	72%	16%	2%	7%	3%
	Very Liberal	75%	16%	4%	1%	4%
Party Registration	Democratic	72%	14%	1%	7%	6%
	Republican	5%	6%	7%	74%	8%
	Undeclared	33%	15%	5%	38%	9%
Party Identification	Democratic	71%	16%	2%	5%	6%
	Republican	5%	8%	6%	72%	9%
	Swing	15%	13%	4%	59%	10%
Congressional District	CD-1	37%	12%	4%	41%	7%
	CD-2	35%	12%	5%	39%	9%
Region	North Country/Lakes	34%	7%	5%	49%	5%
	Monadnock/Dartmouth	30%	15%	3%	42%	10%
	Merrimack Valley	41%	11%	5%	37%	8%
	Seacoast/Border	34%	14%	4%	40%	7%
Total		36%	12%	4%	40%	8%

Would you be more likely or less likely to support an elected official that votes to eliminate the Senate filibuster to allow legislation to pass with a simple majority?

		More Likely	Less Likely	Unsure
Gender	Female	46%	34%	20%
	Male	36%	55%	9%
Age	18-34	35%	37%	27%
	35-54	39%	43%	18%
	55-64	38%	50%	12%
	65+	51%	43%	5%
Education	High School or Less	34%	49%	17%
	Some College/Associates Degree	34%	46%	20%
	College Graduate	45%	45%	10%
	Graduate/Professional School	54%	36%	11%
Ideology	Very Conservative	9%	84%	7%
	Somewhat Conservative	16%	72%	12%
	Moderate	30%	46%	24%
	Somewhat Liberal	77%	12%	11%
	Very Liberal	75%	3%	22%
Party Registration	Democratic	79%	6%	15%
	Republican	11%	78%	11%
	Undeclared	37%	46%	17%
Party Identification	Democratic	75%	8%	17%
	Republican	11%	78%	11%
	Swing	20%	59%	20%
Congressional District	CD-1	43%	47%	10%
	CD-2	39%	41%	20%
Region	North Country/Lakes	35%	45%	20%
	Monadnock/Dartmouth	41%	46%	13%
	Merrimack Valley	42%	42%	16%
	Seacoast/Border	43%	45%	11%
Total		41%	44%	14%

**Would you be more likely or less likely to support an elected official that votes to eliminate the Senate filibuster to allow legislation to pass with a simple majority?**

		Much More Likely	Somewhat More Likely	Somewhat Less Likely	Much Less Likely	Unsure
Gender	Female	30%	16%	3%	31%	20%
	Male	21%	15%	7%	48%	9%
Age	18-34	22%	13%	6%	32%	27%
	35-54	19%	19%	3%	40%	18%
	55-64	24%	14%	3%	46%	12%
	65+	37%	14%	6%	37%	5%
Education	High School or Less	19%	15%	2%	47%	17%
	Some College/Associates Degree	20%	14%	5%	41%	20%
	College Graduate	30%	14%	3%	42%	10%
	Graduate/Professional School	33%	20%	6%	29%	11%
Ideology	Very Conservative	2%	7%	4%	80%	7%
	Somewhat Conservative	6%	10%	7%	65%	12%
	Moderate	15%	15%	3%	43%	24%
	Somewhat Liberal	50%	27%	4%	8%	11%
	Very Liberal	59%	16%	2%	1%	22%
Party Registration	Democratic	57%	22%	2%	5%	15%
	Republican	4%	7%	5%	73%	11%
	Undeclared	18%	18%	6%	40%	17%
Party Identification	Democratic	50%	25%	3%	5%	17%
	Republican	4%	7%	6%	72%	11%
	Swing	8%	13%	8%	51%	20%
Congressional District	CD-1	27%	16%	4%	43%	10%
	CD-2	24%	15%	5%	36%	20%
Region	North Country/Lakes	23%	12%	6%	39%	20%
	Monadnock/Dartmouth	27%	15%	4%	42%	13%
	Merrimack Valley	25%	17%	5%	37%	16%
	Seacoast/Border	27%	16%	4%	42%	11%
Total		26%	16%	4%	40%	15%



Do you think Governor Chris Sununu has done a good enough job to deserve re-election, or is it time to give someone new a chance?

		Deserves Re-election	Someone New	Unsure
Gender	Female	36%	55%	9%
	Male	55%	34%	11%
Age	18-34	43%	44%	13%
	35-54	42%	48%	10%
	55-64	46%	45%	9%
	65+	47%	42%	11%
Education	High School or Less	50%	40%	10%
	Some College/Associates Degree	49%	41%	10%
	College Graduate	45%	46%	10%
	Graduate/Professional School	35%	53%	12%
Ideology	Very Conservative	66%	27%	8%
	Somewhat Conservative	70%	23%	6%
	Moderate	46%	41%	13%
	Somewhat Liberal	26%	58%	15%
	Very Liberal	6%	85%	9%
Party Registration	Democratic	16%	74%	10%
	Republican	72%	21%	8%
	Undeclared	45%	42%	12%
Party Identification	Democratic	19%	69%	12%
	Republican	69%	22%	9%
	Swing	53%	37%	10%
Congressional District	CD-1	47%	41%	12%
	CD-2	42%	50%	9%
Region	North Country/Lakes	60%	34%	6%
	Monadnock/Dartmouth	40%	53%	7%
	Merrimack Valley	42%	49%	9%
	Seacoast/Border	45%	40%	15%
Total		45%	45%	10%

Do you think Congressman Chris Pappas has done a good enough job to deserve re-election, or is it time to give someone new a chance?

		Deserves Re-election	Someone New	Unsure
Gender	Female	43%	39%	17%
	Male	32%	50%	17%
Age	18-34	39%	40%	22%
	35-54	33%	45%	22%
	55-64	35%	50%	15%
	65+	47%	41%	12%
Education	High School or Less	36%	52%	12%
	Some College/Associates Degree	32%	51%	17%
	College Graduate	34%	45%	21%
	Graduate/Professional School	56%	27%	17%
Ideology	Very Conservative	1%	91%	8%
	Somewhat Conservative	11%	73%	16%
	Moderate	24%	48%	28%
	Somewhat Liberal	79%	5%	16%
	Very Liberal	74%	6%	20%
Party Registration	Democratic	76%	9%	15%
	Republican	8%	80%	13%
	Undeclared	35%	41%	24%
Party Identification	Democratic	76%	7%	17%
	Republican	6%	78%	15%
	Swing	18%	50%	32%
Region	North Country/Lakes	35%	45%	20%
	Monadnock/Dartmouth	75%	25%	
	Merrimack Valley	43%	45%	11%
	Seacoast/Border	36%	45%	20%
Total		38%	45%	17%

Do you think Congresswoman Annie Kuster has done a good enough job to deserve re-election, or is it time to give someone new a chance?

		Deserves Re-election	Someone New	Unsure
Gender	Female	41%	43%	16%
	Male	24%	58%	18%
Age	18-34	25%	59%	17%
	35-54	25%	53%	22%
	55-64	35%	51%	14%
	65+	47%	40%	13%
Education	High School or Less	23%	60%	17%
	Some College/Associates Degree	22%	64%	14%
	College Graduate	40%	39%	21%
	Graduate/Professional School	47%	38%	15%
Ideology	Very Conservative		92%	8%
	Somewhat Conservative	8%	76%	16%
	Moderate	18%	65%	16%
	Somewhat Liberal	66%	12%	22%
	Very Liberal	74%	9%	17%
Party Registration	Democratic	67%	16%	16%
	Republican	1%	84%	15%
	Undeclared	30%	52%	18%
Party Identification	Democratic	66%	16%	18%
	Republican	2%	84%	15%
	Swing	7%	74%	19%
Region	North Country/Lakes		100%	
	Monadnock/Dartmouth	31%	53%	16%
	Merrimack Valley	37%	48%	15%
	Seacoast/Border	36%	31%	34%
Total		33%	50%	17%

If the election for US Senate were held today, and the candidates were Maggie Hassan and Don Bolduc, for whom would you vote?

		Hassan	Bolduc	Someone Else	Unsure
Gender	Female	50%	30%	9%	12%
	Male	35%	42%	11%	13%
Age	18-34	39%	31%	15%	15%
	35-54	37%	41%	10%	12%
	55-64	42%	37%	10%	12%
	65+	53%	30%	6%	10%
Education	High School or Less	42%	31%	13%	15%
	Some College/Associates Degree	32%	46%	10%	11%
	College Graduate	43%	34%	10%	14%
	Graduate/Professional School	58%	24%	7%	10%
Ideology	Very Conservative	1%	83%	7%	9%
	Somewhat Conservative	15%	57%	13%	15%
	Moderate	27%	36%	23%	14%
	Somewhat Liberal	83%	4%	4%	10%
	Very Liberal	85%		3%	12%
Party Registration	Democratic	83%	5%	4%	8%
	Republican	6%	70%	11%	14%
	Undeclared	41%	31%	14%	14%
Party Identification	Democratic	84%	3%	4%	9%
	Republican	5%	68%	11%	15%
	Swing	19%	35%	33%	13%
Congressional District	CD-1	43%	37%	8%	11%
	CD-2	42%	34%	11%	13%
Region	North Country/Lakes	34%	41%	17%	8%
	Monadnock/Dartmouth	39%	36%	15%	10%
	Merrimack Valley	49%	35%	7%	10%
	Seacoast/Border	40%	34%	9%	16%
Total		43%	35%	10%	12%

If the election for US Senate were held today, and the candidates were Maggie Hassan and Chuck Morse, for whom would you vote?

		Hassan	Morse	Someone Else	Unsure
Gender	Female	49%	20%	17%	14%
	Male	33%	34%	16%	16%
Age	18-34	40%	22%	23%	15%
	35-54	33%	30%	19%	18%
	55-64	41%	26%	18%	15%
	65+	52%	27%	9%	13%
Education	High School or Less	38%	32%	15%	16%
	Some College/Associates Degree	33%	33%	21%	14%
	College Graduate	41%	24%	17%	18%
	Graduate/Professional School	57%	18%	12%	13%
Ideology	Very Conservative	2%	60%	27%	11%
	Somewhat Conservative	14%	47%	22%	18%
	Moderate	24%	25%	30%	21%
	Somewhat Liberal	81%	2%	4%	14%
	Very Liberal	85%		4%	12%
Party Registration	Democratic	81%	3%	5%	10%
	Republican	5%	53%	26%	17%
	Undeclared	39%	24%	18%	18%
Party Identification	Democratic	82%	2%	5%	11%
	Republican	5%	54%	24%	18%
	Swing	17%	17%	41%	25%
Congressional District	CD-1	43%	27%	16%	14%
	CD-2	39%	27%	17%	17%
Region	North Country/Lakes	33%	30%	24%	14%
	Monadnock/Dartmouth	36%	25%	20%	20%
	Merrimack Valley	47%	27%	14%	12%
	Seacoast/Border	40%	26%	17%	18%
Total		41%	27%	17%	15%

If the election for US Senate were held today, and the candidates were Maggie Hassan and Chuck Morse, for whom would you vote?

		Hassan	Morse	Someone Else	Unsure
Gender	Female	49%	20%	17%	14%
	Male	33%	34%	16%	16%
Age	18-34	40%	22%	23%	15%
	35-54	33%	30%	19%	18%
	55-64	41%	26%	18%	15%
	65+	52%	27%	9%	13%
Education	High School or Less	38%	32%	15%	16%
	Some College/Associates Degree	33%	33%	21%	14%
	College Graduate	41%	24%	17%	18%
	Graduate/Professional School	57%	18%	12%	13%
Ideology	Very Conservative	2%	60%	27%	11%
	Somewhat Conservative	14%	47%	22%	18%
	Moderate	24%	25%	30%	21%
	Somewhat Liberal	81%	2%	4%	14%
	Very Liberal	85%		4%	12%
Party Registration	Democratic	81%	3%	5%	10%
	Republican	5%	53%	26%	17%
	Undeclared	39%	24%	18%	18%
Party Identification	Democratic	82%	2%	5%	11%
	Republican	5%	54%	24%	18%
	Swing	17%	17%	41%	25%
Congressional District	CD-1	43%	27%	16%	14%
	CD-2	39%	27%	17%	17%
Region	North Country/Lakes	33%	30%	24%	14%
	Monadnock/Dartmouth	36%	25%	20%	20%
	Merrimack Valley	47%	27%	14%	12%
	Seacoast/Border	40%	26%	17%	18%
Total		41%	27%	17%	15%

# WEIGHTED DEMOGRAPHICS

January 11-12, 2022

n = 1215

New Hampshire Registered Voters

MoE +/- 2.8%

Gender			
		Frequency	Percent
	Female	632	52
	Male	583	48
	Total	1215	100

Age			
		Frequency	Percent
	18-34	190	16
	35-54	394	32
	55-64	317	26
	65+	315	26
	Total	1215	100

Education			
		Frequency	Percent
	High School or Less	203	17
	Some College/Associates Degree	408	34
	College Graduate	338	28
	Graduate/Professional School	266	22
	Total	1215	100

Ideology			
		Frequency	Percent
	Very Conservative	192	16
	Somewhat Conservative	333	27
	Moderate	200	16
	Somewhat Liberal	309	25
	Very Liberal	181	15
	Conservative	525	43
	Moderate	200	16
	Liberal	490	40
	Total	1215	100

Party Registration			
		Frequency	Percent
	Democratic	375	31
	Republican	390	32
	Undeclared	450	37
	Total	1215	100
CD-1	Democratic	198	31
	Republican	225	35
	Undeclared	217	34
	Total	640	100
CD-2	Democratic	177	31
	Republican	165	29
	Total	233	41
	Total	575	100



Party Identification			
		Frequency	Percent
	Democratic	561	46
	Republican	552	45
	Swing	102	8
	Total	1215	100
CD-1	Democratic	283	44
	Republican	312	49
	Swing	45	7
	Total	640	100
CD-2	Democratic	278	48
	Republican	240	42
	Swing	58	10
	Total	575	100

Congressional District			
		Frequency	Percent
	CD-1	640	53
	CD-2	575	47
	Total	1215	100

Region			
		Frequency	Percent
	North Country/Lakes	131	11
	Monadnock/Dartmouth	193	16
	Merrimack Valley	476	39
	Seacoast/Border	414	34
	Total	1215	100

**ABOUT THE SAINT ANSELM COLLEGE SURVEY CENTER:** The Saint Anselm College Survey Center (SACSC) was founded in the wake of the 2016 election, and launched its first poll in February 2018 as the midterm elections were getting underway. Housed within the New Hampshire Institute of Politics at Saint Anselm College, the Center conducts quarterly polls of New Hampshire voter attitudes and additional polls as circumstances warrant. This research supports the academic mission of the College, and provides students with a practical education in survey techniques while providing the public at large with insight into political opinion trends that impact the state's federal and gubernatorial elections. The Center's political surveys were the most accurate New Hampshire election polling throughout the 2020 cycle. To support its operations, the Center performs commissioned research on behalf of nonprofit organizations and corporations.

For more information on SACSC, please visit: [anselm.edu/new-hampshire-institute-politics/polling](https://anselm.edu/new-hampshire-institute-politics/polling)

For inquiries, please contact: [nhioppoll@anselm.edu](mailto:nhioppoll@anselm.edu)