

A SURVEY OF REGISTERED NEW HAMPSHIRE VOTERS

AUGUST 9-11, 2022

NEIL LEVESQUE, EXECUTIVE DIRECTOR
TAUNA SISCO, PH.D, FACULTY ADVISOR



**NEW HAMPSHIRE
INSTITUTE OF POLITICS**

Saint Anselm College

TABLE OF CONTENTS

3	SURVEY NOTES
4	EXECUTIVE SUMMARY
6	CHARTS
10	WEIGHTED MARGINALS
19	WEIGHTED TABLES
54	WEIGHTED DEMOGRAPHICS
57	ABOUT SACSC

SURVEY NOTES

These results are from the Saint Anselm College Survey Center poll based on online surveys of 1898 New Hampshire registered voters. Surveys were collected between August 9th and 11th, 2022, from cell phone users randomly drawn from a sample of registered voters reflecting the demographic and partisan characteristics of the voting population. Names were presented in random order for the job approval and the ballot test series. The survey has an overall margin of sampling error of +/- 2.3% with a confidence interval of 95%; the margin of sampling error for questions specific to congressional districts is +/- 3.2%; the margin of sampling error for questions posed only to voters identifying as Republican is +/- 3.4% statewide, +/- 4.8% in the 1st Congressional District, and +/- 4.9% in the 2nd Congressional District. The data are weighted for age, gender, geography, and education based on a voter demographic model derived from historical voting patterns, but are not weighted by party registration or party identification.

EXECUTIVE SUMMARY

New Hampshire Institute of Politics Executive Director Neil Levesque summarized the results, saying, “The political environment has stabilized since our last poll in March, but it hasn’t improved for incumbents. With the primary elections just a month away, the stage is set for competitive federal elections. The Republican primaries for United States Senate and the 1st Congressional District have begun to take shape, while the race for the 2nd Congressional District is still largely undefined. The Republicans have solid opportunities in New Hampshire, but with tough and experienced incumbents, nominees will have to pivot quickly and smoothly into the general election campaign to win.”

The political environment has remained poor but stable for incumbent officeholders. 68% of New Hampshire registered voters still believe the country is on the wrong track, unchanged since March. 21% believe it is headed in the right direction.

Incumbent job approval has receded somewhat. President Joe Biden’s job approval has decreased slightly to 42%-57% from 43%-57% in March. Governor Chris Sununu is now at 60%-37%, down from 62%-36%. Senator Jeanne Shaheen is now at 47%-46%; Senator Maggie Hassan is at 44%-51%, down from 46%-49%; Congressman Chris Pappas is at 42%-45%, down from 43%-42%; and Congresswoman Annie Kuster is at 40%-45%, down from 42%-45%.

The Republican lead on the generic ballot continues to narrow slightly. Republicans now hold a 3-point lead at 46%-43%, down from a 6-point advantage in January and a 4-point lead in March.

Governor Sununu has lost some ground to his challenger. State Senator Tom Sherman has gained some ground and now trails 48%-29%, an improvement on March’s spread of 51%-24%.

Senate challenger Don Bolduc has opened up a strong lead over the rest of the Republican primary field. Building on residual support from his 2020 Senate primary run, Bolduc leads with 32% on the ballot test, followed by Chuck Morse with 16%, Kevin Smith with 4%, Bruce Fenton with 4%, and Vikram Mansharamani with 2%. 39% of Republican voters remain undecided.

The 1st Congressional District Republican primary is shaping up as a 2-person race. 2020 nominee Matt Mowers currently leads with 25%, followed by Karoline Leavitt with 21%. The rest of the field is in single digits.

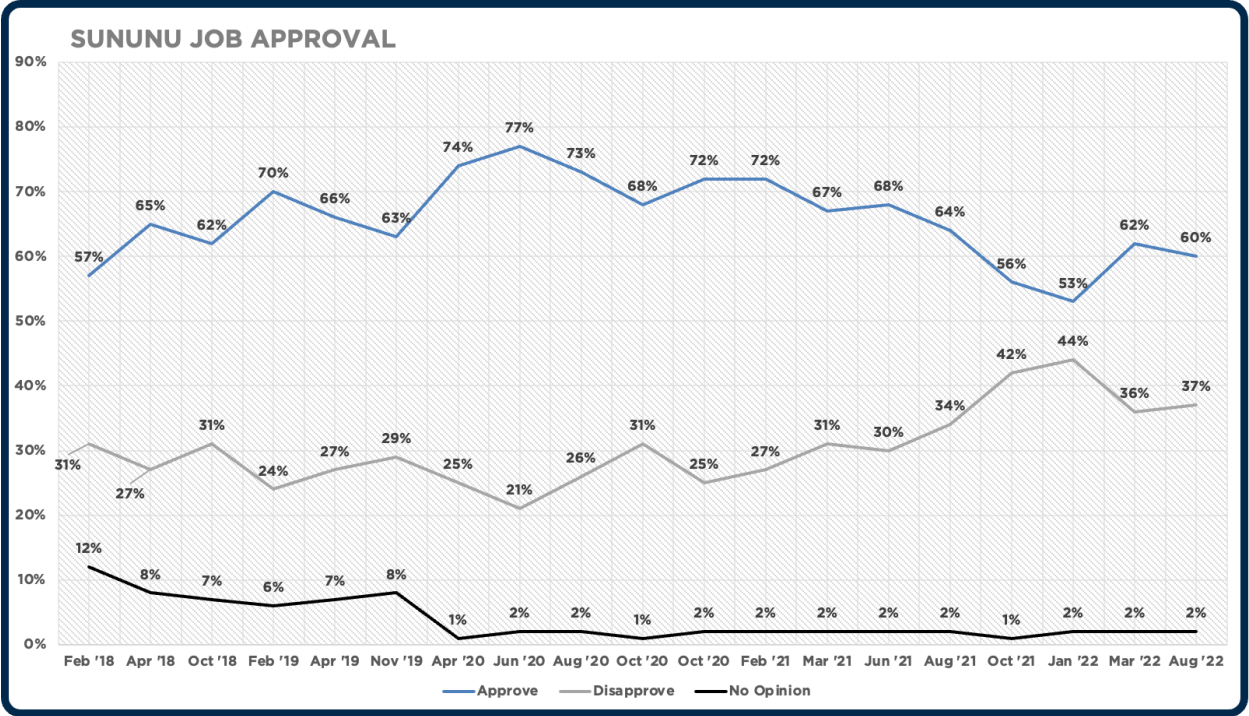
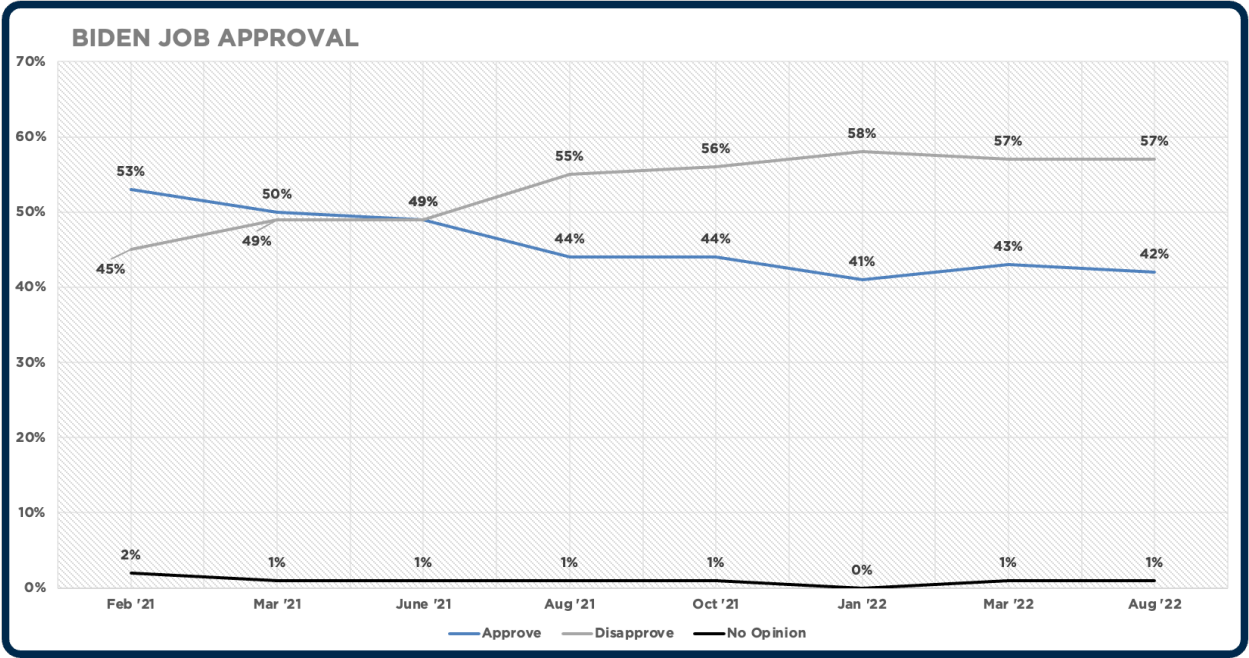
No candidate has broken from the field in the 2nd Congressional District Republican primary. 65% of CD-2 Republican voters are undecided on their choice. Robert Burns (12%), George Hansel (10%), and Lily Tang Williams (8%) have yet to consolidate any significant support.

Voter concerns favor Republican candidates. Economy/Inflation is the most important issue for 28% of voters, followed by Government Spending/Taxes at 13%. Abortion is the most important issue for 12%, while Climate/Environment comes in at 9%.

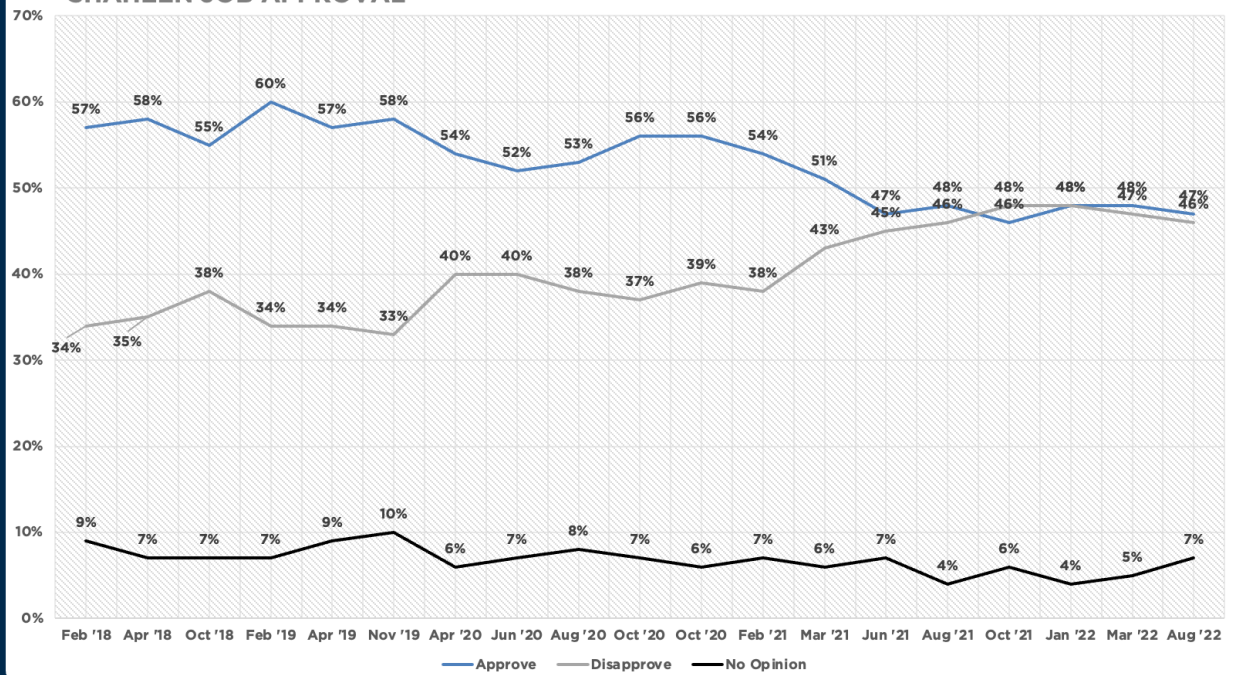
However, the recent Supreme Court decision overturning Roe v. Wade has energized pro-choice voters, with the net result that even as incumbent job approval has declined slightly, the generic ballot for Democrats has improved slightly. 58% of pro-choice voters report being more motivated to vote in the wake of the Dobbs decision, while it makes no difference to 69% of pro-life voters.

No matter the nominees, weakness in the Federal delegation creates potential for competitive races. Only 39% of voters believe that Hassan deserves re-election. 38% of CD-1 voters believe that Pappas deserves re-election, unchanged since March, while 36% of CD-2 voters believe that Kuster deserves re-election, up 3 points since March.

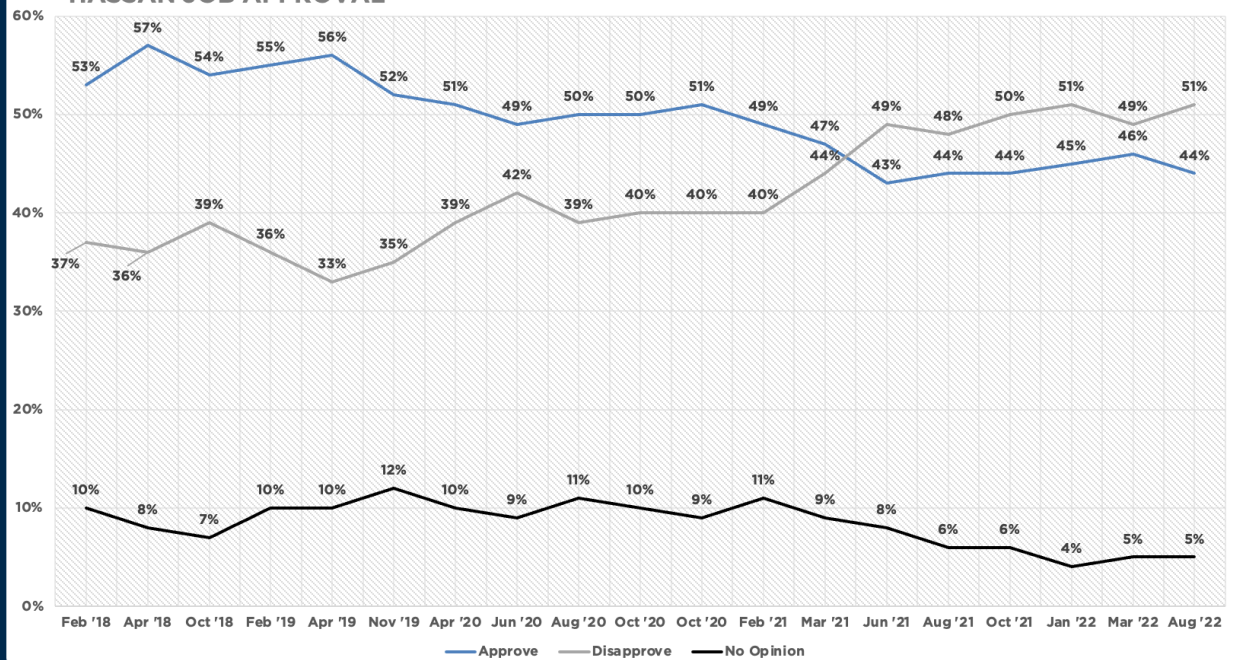
CHARTS



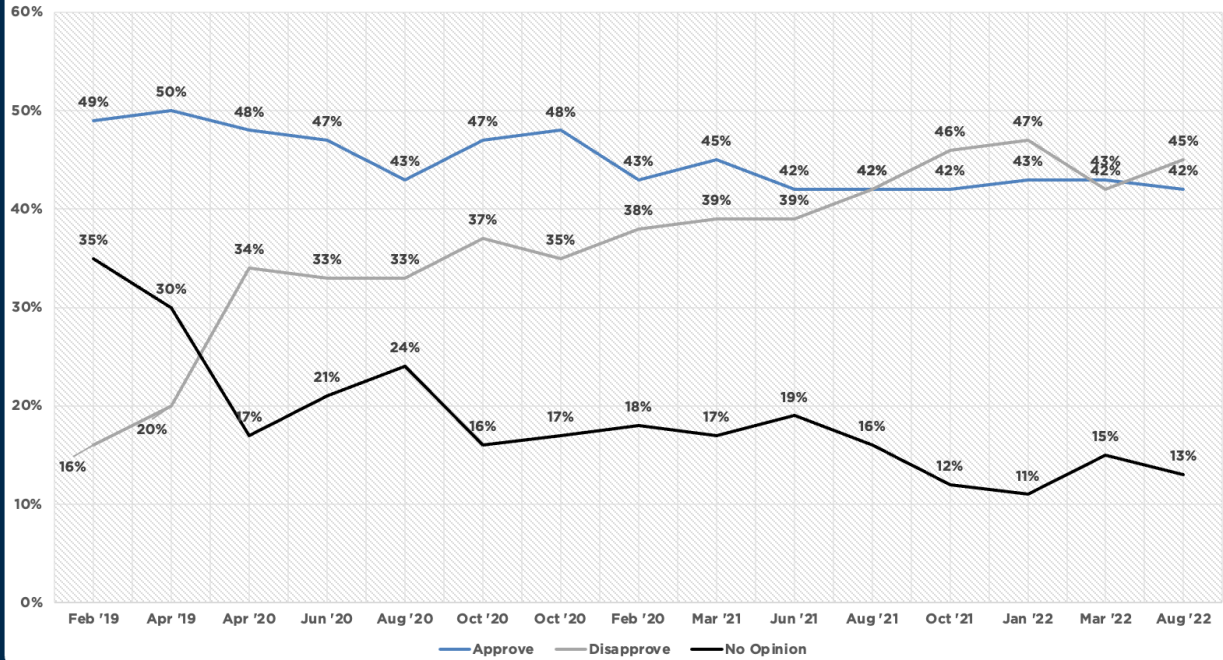
SHAHEEN JOB APPROVAL



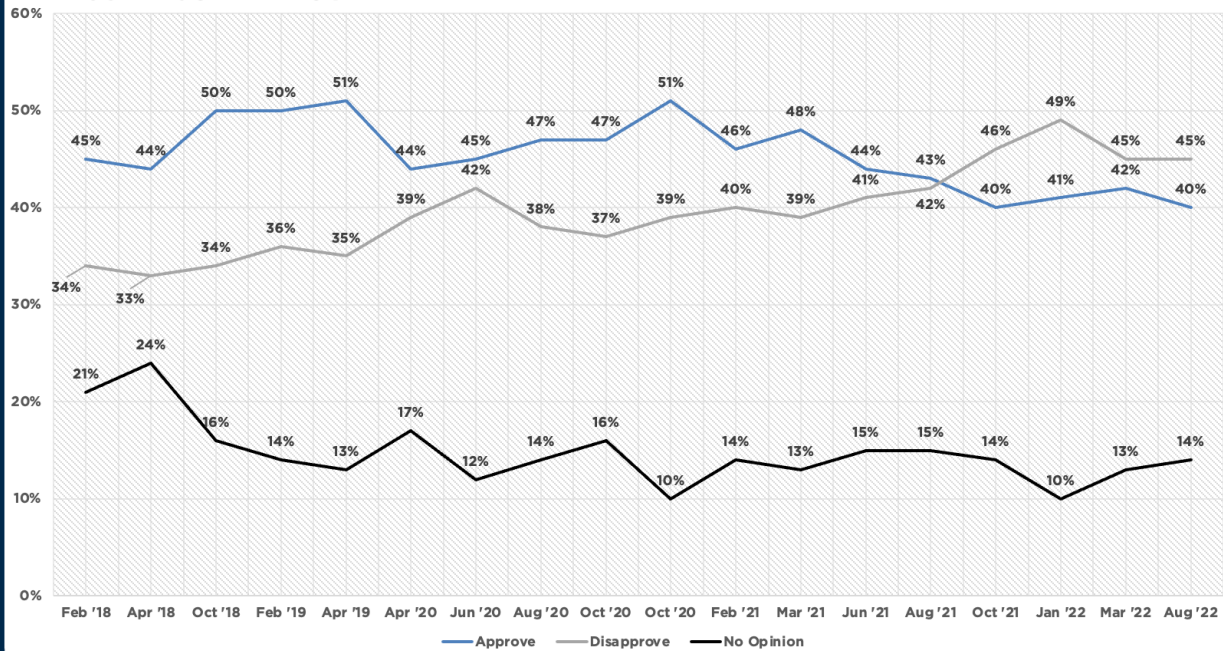
HASSAN JOB APPROVAL



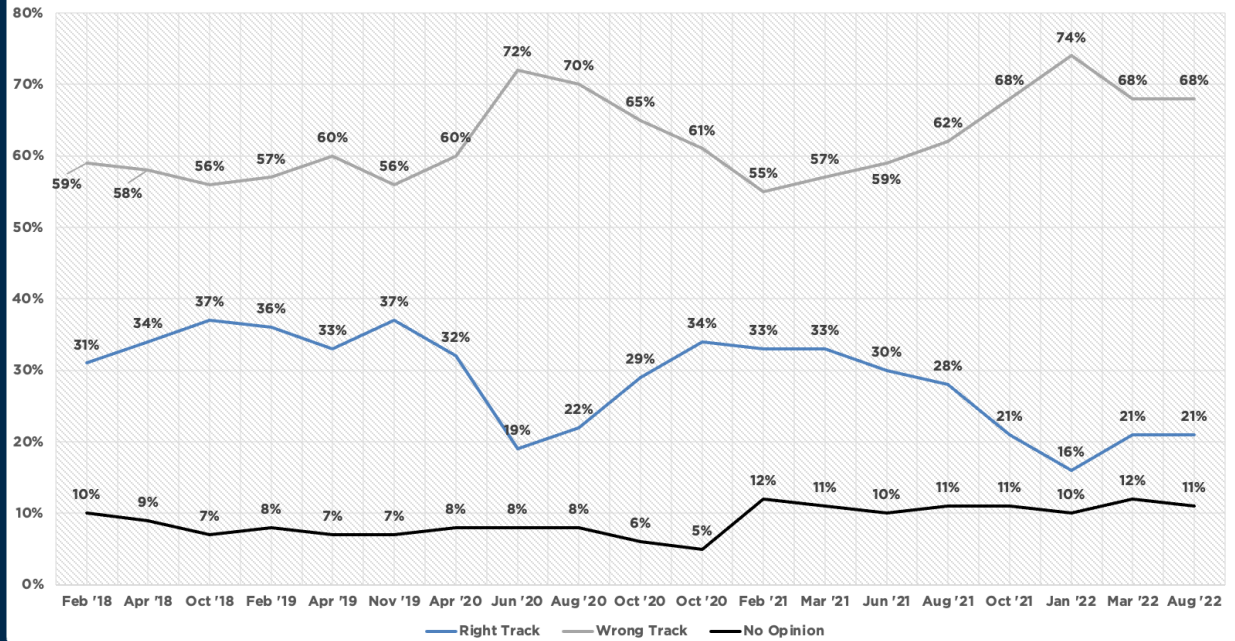
PAPPAS JOB APPROVAL



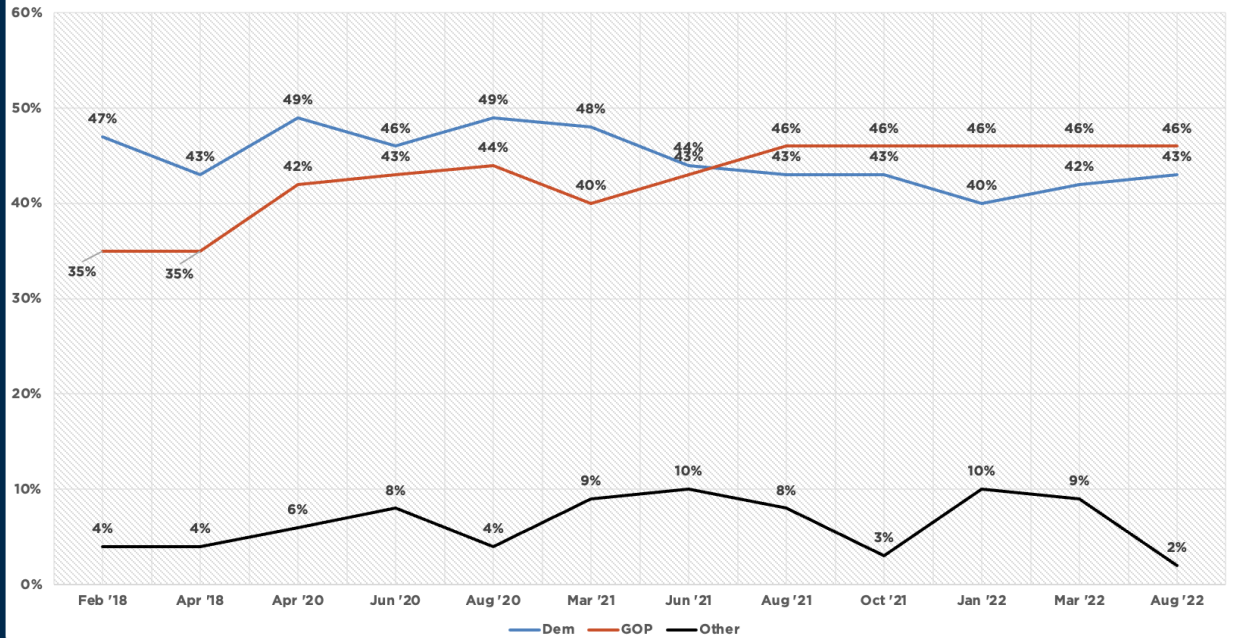
KUSTER JOB APPROVAL



RIGHT TRACK VS WRONG TRACK



GENERIC CONGRESSIONAL BALLOT



WEIGHTED MARGINALS

August 9-11, 2022
 n = 1898
 New Hampshire Registered Voters
 MoE +/- 2.3%

Would you say that things in our country are heading in the right direction, or have things gotten off on the wrong track?

	Frequency	Percent
Right Track	390	21
Wrong Track	1294	68
Unsure	214	11
Total	1898	100

If the election for Congress were held today, for which candidate would you likely vote?

	Frequency	Percent
Republican	869	46
Democratic	811	43
Other	42	2
Unsure	176	9
Total	1898	100

Do you approve or disapprove of the way President Joe Biden is doing his job?

	Frequency	Percent
Strongly Approve	333	18
Somewhat Approve	465	25
Somewhat Disapprove	126	7
Strongly Disapprove	965	51
No Opinion	10	1
Approve	798	42
Disapprove	1091	57
No Opinion	10	1
Total	1898	100

Do you approve or disapprove of the way Governor Chris Sununu is doing his job?

	Frequency	Percent
Strongly Approve	461	24
Somewhat Approve	687	36
Somewhat Disapprove	387	20
Strongly Disapprove	317	17
No Opinion	47	2
Never Heard Of	0	0
Approve	1148	60
Disapprove	703	37
No Opinion	47	2
Total	1898	100

Do you approve or disapprove of the way Senator Jeanne Shaheen is doing her job?

	Frequency	Percent
Strongly Approve	516	27
Somewhat Approve	383	20
Somewhat Disapprove	189	10
Strongly Disapprove	680	36
No Opinion	129	7
Never Heard Of	1	0
Approve	898	47
Disapprove	869	46
No Opinion	131	7
Total	1898	100

Do you approve or disapprove of the way Senator Maggie Hassan is doing her job?		
	Frequency	Percent
Strongly Approve	488	26
Somewhat Approve	355	19
Somewhat Disapprove	194	10
Strongly Disapprove	773	41
No Opinion	87	5
Approve	843	44
Disapprove	968	51
No Opinion	87	5
Total	1898	100

Do you approve or disapprove of the way Congressman Chris Pappas is doing his job? (CD-1 Only)		
	Frequency	Percent
Strongly Approve	210	22
Somewhat Approve	190	20
Somewhat Disapprove	102	11
Strongly Disapprove	332	34
No Opinion	116	12
Never Heard Of	12	1
Total	961	100
Approve	400	42
Disapprove	434	45
No Opinion	127	13
Total	961	100

Do you approve or disapprove of the way Congresswoman Annie Kuster is doing her job? (CD-2 Only)

	Frequency	Percent
Strongly Approve	211	22
Somewhat Approve	167	18
Somewhat Disapprove	93	10
Strongly Disapprove	331	35
No Opinion	125	13
Never Heard Of	10	1
Total	937	100
Approve	377	40
Disapprove	425	45
No Opinion	135	14
Total	937	100

Which of the below issues is most important in determining how you vote?

	Frequency	Percent
Economy/Inflation	532	28
Government Spending/Taxes	239	13
Abortion	226	12
Environment/Climate	174	9
Elections/Voting	159	8
Health Care	133	7
Gun Regulation	91	5
Immigration	87	5
National Security	62	3
Education	52	3
Russian/Chinese Expansionism	40	2
Crime	20	1
Other	72	4
Unsure	8	0
Total	1898	100

Broadly speaking, which of the below statements best describes your political position on abortion?

- I vote only for candidates who support abortion as a right
- I generally vote for candidates who support abortion as a right, but I do make exceptions
- I don't vote based on a candidate's position on abortion
- I generally vote for candidates who support a fetus' life as a right, but I do make exceptions
- I vote only for candidates who support a fetus' life as a right

	Frequency	Percent
Hard Pro-Choice	647	34
Soft Pro-Choice	279	15
Neither	544	29
Soft Pro-Life	243	13
Hard Pro-Life	185	10
Pro-Choice	925	49
Pro-Life	429	23
Unsure	544	29
Total	1898	100

Which of the below statements best describes your personal position on abortion?

- I believe that abortion should be allowed with no restrictions
- I believe that abortion should be allowed with some restrictions
- I believe that abortion should not be allowed except under very narrow circumstances
- I believe that abortion should not be allowed under any circumstances
- Unsure

	Frequency	Percent
Hard Pro-Choice	556	29
Soft Pro-Choice	801	42
Soft Pro-Life	393	21
Hard Pro-Life	87	5
Unsure	61	3
Pro-Choice	1357	71
Pro-Life	480	25
Unsure	61	3
Total	1898	100

Do you support or oppose the recent Supreme Court decision overturning Roe v. Wade?

	Frequency	Percent
Strongly Support	533	28
Somewhat Support	185	10
Somewhat Oppose	101	5
Strongly Oppose	992	52
Unsure	87	5
Support	718	38
Oppose	1093	58
Unsure	87	5
Total	1898	100

Does the recent Supreme Court decision overturning Roe v. Wade make you more or less motivated to vote in upcoming elections?

	Frequency	Percent
Much More	803	42
Somewhat More	146	8
Somewhat Less	19	1
Much Less	9	0
No Difference	921	49
More	948	50
Less	28	1
No Difference	921	49
Total	1898	100

Do you believe that access to abortion will become more restricted in New Hampshire in the future?

	Frequency	Percent
Yes	598	32
No	628	33
Unsure	672	35
Total	1898	100

Which of the below statements best describes how important the issue of abortion will be in determining your vote in upcoming elections?

- I will base how I vote solely on the issue of abortion
- A candidate's stance on abortion will be a very important factor, but not the sole issue in determining my vote
- A candidate's stance on abortion will be a small factor in determining my vote
- A candidate's stance on abortion will not make any difference in determining my vote

	Frequency	Percent
Extremely Important	176	9
Very Important	968	51
Somewhat Important	359	19
Unimportant	396	21
Extremely/Very	1143	60
Somewhat/Not	755	40
Total	1898	100

If the Republican primary election for the Governor were held today, for which of the below candidates would you vote? (GOP ID Only)

	Frequency	Percent
Sununu	555	68
Testerman	46	6
Riley	43	5
Someone Else	17	2
Unsure	159	19
Total	820	100

If the Republican primary election for the US Senate were held today, for which of the below candidates would you vote? (GOP ID Only)

	Frequency	Percent
Bolduc	262	32
Morse	131	16
Smith	37	4
Fenton	34	4
Mansharamani	16	2
Someone Else	20	2
Unsure	319	39
Total	820	100

If the Republican primary election for the US House of Representatives were held today, for which of the below candidates would you vote? (CD-1 GOP ID Only)

	Frequency	Percent
Mowers	106	25
Leavitt	89	21
Brown	38	9
Baxter	36	8
Prescott	10	2
Someone Else	3	1
Unsure	141	33
Total	423	100

If the Republican primary election for the US House of Representatives were held today, for which of the below candidates would you vote? (CD-2 GOP ID Only)

	Frequency	Percent
Burns	49	12
Hansel	38	10
Williams	30	8
Someone Else	22	6
Unsure	258	65
Total	397	100

If the election for NH Governor were held today, and the candidates were Chris Sununu and Tom Sherman, for whom would you vote?

	Frequency	Percent
Sununu	908	48
Sherman	558	29
Someone Else	82	4
Unsure	349	18
Total	1898	100

Do you think Senator Maggie Hassan has done a good enough job to deserve re-election, or is it time to give someone new a chance?

	Frequency	Percent
Deserves Re-election	739	39
Someone New	1003	53
Unsure	156	8
Total	1898	100

Do you think Congressman Chris Pappas has done a good enough job to deserve re-election, or is it time to give someone new a chance? (CD-1 Only)

	Frequency	Percent
Deserves Re-election	365	38
Someone New	453	47
Unsure	143	15
Total	961	100

Do you think Congresswoman Annie Kuster has done a good enough job to deserve re-election, or is it time to give someone new a chance? (CD-2 Only)

	Frequency	Percent
Deserves Re-election	332	36
Someone New	480	51
Unsure	122	13
Total	934	100

WEIGHTED TABLES

August 9-11, 2022
 n = 1898
 New Hampshire Registered Voters
 MoE +/- 2.3%

Would you say that things in our country are heading in the right direction, or have things gotten off on the wrong track?				
		Right Track	Wrong Track	Unsure
Gender	Female	23%	62%	15%
	Male	18%	75%	8%
Age	18-34	11%	76%	13%
	35-54	17%	73%	10%
	55-64	21%	69%	10%
	65+	30%	57%	13%
Education	High School or Less	14%	80%	7%
	Some College/Associates Degree	18%	68%	13%
	College Graduate	21%	68%	11%
	Graduate/Professional School	28%	59%	13%
Ideology	Very Conservative	1%	98%	1%
	Somewhat Conservative	4%	90%	6%
	Moderate	13%	78%	9%
	Somewhat Liberal	43%	38%	19%
	Very Liberal	39%	42%	19%
Party Registration	Democratic	44%	38%	18%
	Republican	2%	97%	2%
	Undeclared	16%	70%	14%
Party Identification	Democratic	42%	38%	19%
	Republican	2%	96%	2%
	Swing	6%	79%	15%
Congressional District	CD-1	21%	69%	10%
	CD-2	20%	68%	12%
Region	North Country/Lakes	19%	65%	16%
	Monadnock/Dartmouth	16%	76%	7%
	Merrimack Valley	20%	67%	13%
	Seacoast/Border	24%	66%	9%
Total		21%	68%	11%

If the election for Congress were held today, for which candidate would you likely vote?					
		Democratic	Republican	Other	Unsure
Gender	Female	50%	36%	2%	12%
	Male	35%	56%	3%	6%
Age	18-34	36%	48%	3%	12%
	35-54	39%	50%	3%	7%
	55-64	40%	47%	2%	11%
	65+	53%	37%	1%	9%
Education	High School or Less	25%	62%	1%	12%
	Some College/Associates Degree	39%	49%	3%	10%
	College Graduate	45%	44%	2%	9%
	Graduate/Professional School	60%	32%	3%	6%
Ideology	Very Conservative	2%	94%	2%	2%
	Somewhat Conservative	8%	81%	2%	9%
	Moderate	29%	47%	4%	20%
	Somewhat Liberal	80%	8%	2%	10%
	Very Liberal	96%	1%	1%	2%
Party Registration	Democratic	88%	5%	1%	6%
	Republican	2%	92%	2%	3%
	Undeclared	38%	42%	4%	17%
Party Identification	Democratic	87%	5%	1%	8%
	Republican	3%	91%	2%	5%
	Swing	21%	32%	10%	36%
Congressional District	CD-1	42%	48%	2%	9%
	CD-2	44%	44%	2%	10%
Region	North Country/Lakes	39%	45%	2%	14%
	Monadnock/Dartmouth	40%	51%	2%	7%
	Merrimack Valley	44%	43%	2%	10%
	Seacoast/Border	44%	47%	2%	7%
Total		43%	46%	2%	9%

Do you approve or disapprove of the way President Joe Biden is doing his job?				
		Approve	Disapprove	No Opinion
Gender	Female	52%	48%	0%
	Male	31%	68%	1%
Age	18-34	31%	68%	1%
	35-54	39%	61%	1%
	55-64	41%	59%	0%
	65+	54%	46%	0%
Education	High School or Less	23%	77%	
	Some College/Associates Degree	38%	61%	1%
	College Graduate	46%	54%	1%
	Graduate/Professional School	58%	41%	0%
Ideology	Very Conservative	2%	98%	
	Somewhat Conservative	10%	90%	0%
	Moderate	30%	70%	
	Somewhat Liberal	79%	20%	1%
	Very Liberal	88%	11%	1%
Party Registration	Democratic	84%	16%	
	Republican	3%	97%	
	Undeclared	38%	60%	1%
Party Identification	Democratic	85%	15%	0%
	Republican	3%	97%	
	Swing	19%	77%	4%
Congressional District	CD-1	42%	58%	0%
	CD-2	42%	57%	1%
Region	North Country/Lakes	40%	60%	
	Monadnock/Dartmouth	39%	61%	1%
	Merrimack Valley	43%	57%	1%
	Seacoast/Border	43%	56%	0%
Total		42%	57%	1%

Do you approve or disapprove of the way President Joe Biden is doing his job?

		Strongly Approve	Somewhat Approve	Somewhat Disapprove	Strongly Disapprove	No Opinion
Gender	Female	23%	28%	7%	41%	0%
	Male	11%	20%	6%	62%	1%
Age	18-34	6%	25%	10%	58%	1%
	35-54	14%	25%	6%	54%	1%
	55-64	19%	22%	6%	53%	0%
	65+	28%	26%	5%	40%	0%
Education	High School or Less	9%	14%	5%	72%	
	Some College/Associates Degree	16%	21%	9%	53%	1%
	College Graduate	19%	27%	6%	48%	1%
	Graduate/Professional School	24%	35%	6%	36%	0%
Ideology	Very Conservative	1%	0%	2%	96%	
	Somewhat Conservative	2%	7%	7%	83%	0%
	Moderate	11%	20%	7%	63%	
	Somewhat Liberal	37%	43%	8%	12%	1%
	Very Liberal	36%	52%	7%	4%	1%
Party Registration	Democratic	41%	43%	6%	10%	
	Republican	1%	3%	4%	93%	
	Undeclared	11%	27%	10%	50%	1%
Party Identification	Democratic	37%	48%	6%	9%	0%
	Republican	1%	3%	4%	92%	
	Swing	4%	15%	18%	59%	4%
Congressional District	CD-1	19%	23%	6%	52%	0%
	CD-2	16%	26%	7%	50%	1%
Region	North Country/Lakes	20%	21%	11%	49%	
	Monadnock/Dartmouth	14%	25%	5%	56%	1%
	Merrimack Valley	17%	25%	8%	49%	1%
	Seacoast/Border	19%	24%	5%	51%	0%
Total		18%	24%	7%	51%	1%

Do you approve or disapprove of the way Governor Chris Sununu is doing his job?				
		Approve	Disapprove	No Opinion
Gender	Female	54%	42%	4%
	Male	67%	31%	1%
Age	18-34	52%	43%	5%
	35-54	61%	36%	3%
	55-64	64%	34%	1%
	65+	61%	37%	2%
Education	High School or Less	72%	26%	2%
	Some College/Associates Degree	62%	35%	3%
	College Graduate	61%	37%	2%
	Graduate/Professional School	49%	48%	3%
Ideology	Very Conservative	74%	23%	2%
	Somewhat Conservative	84%	15%	2%
	Moderate	66%	30%	4%
	Somewhat Liberal	47%	50%	2%
	Very Liberal	22%	76%	2%
Party Registration	Democratic	34%	64%	2%
	Republican	80%	18%	2%
	Undeclared	67%	30%	3%
Party Identification	Democratic	39%	59%	3%
	Republican	80%	17%	2%
	Swing	70%	27%	3%
Congressional District	CD-1	61%	37%	3%
	CD-2	60%	38%	2%
Region	North Country/Lakes	68%	30%	1%
	Monadnock/Dartmouth	62%	35%	3%
	Merrimack Valley	60%	38%	2%
	Seacoast/Border	58%	39%	3%
Total		61%	37%	2%

Do you approve or disapprove of the way Governor Chris Sununu is doing his job?

		Strongly Approve	Somewhat Approve	Somewhat Disapprove	Strongly Disapprove	No Opinion
Gender	Female	22%	32%	23%	20%	4%
	Male	27%	41%	18%	14%	1%
Age	18-34	21%	31%	14%	29%	5%
	35-54	23%	38%	23%	13%	3%
	55-64	24%	40%	18%	16%	1%
	65+	28%	33%	23%	14%	2%
Education	High School or Less	38%	34%	14%	12%	2%
	Some College/Associates Degree	24%	38%	20%	15%	3%
	College Graduate	22%	39%	21%	16%	2%
	Graduate/Professional School	18%	31%	25%	23%	3%
Ideology	Very Conservative	39%	35%	18%	5%	2%
	Somewhat Conservative	40%	43%	10%	5%	2%
	Moderate	28%	38%	17%	13%	4%
	Somewhat Liberal	10%	38%	29%	21%	2%
	Very Liberal	2%	19%	30%	46%	2%
Party Registration	Democratic	5%	29%	29%	35%	2%
	Republican	43%	37%	13%	5%	2%
	Undeclared	25%	42%	19%	11%	3%
Party Identification	Democratic	6%	33%	29%	29%	3%
	Republican	42%	38%	12%	6%	2%
	Swing	26%	45%	18%	9%	3%
Congressional District	CD-1	24%	37%	21%	15%	3%
	CD-2	25%	36%	20%	18%	2%
Region	North Country/Lakes	26%	42%	16%	15%	1%
	Monadnock/Dartmouth	28%	34%	20%	15%	3%
	Merrimack Valley	23%	37%	19%	19%	2%
	Seacoast/Border	23%	35%	24%	16%	3%
Total		24%	36%	20%	17%	2%

Do you approve or disapprove of the way Senator Jeanne Shaheen is doing her job?				
		Approve	Disapprove	No Opinion
Gender	Female	56%	35%	8%
	Male	38%	57%	5%
Age	18-34	35%	47%	18%
	35-54	44%	49%	7%
	55-64	48%	49%	3%
	65+	58%	39%	3%
Education	High School or Less	33%	61%	6%
	Some College/Associates Degree	42%	49%	10%
	College Graduate	49%	45%	6%
	Graduate/Professional School	65%	31%	5%
Ideology	Very Conservative	4%	87%	9%
	Somewhat Conservative	22%	73%	5%
	Moderate	37%	54%	9%
	Somewhat Liberal	83%	11%	6%
	Very Liberal	83%	9%	8%
Party Registration	Democratic	85%	10%	5%
	Republican	9%	83%	7%
	Undeclared	47%	44%	8%
Party Identification	Democratic	86%	10%	5%
	Republican	11%	81%	8%
	Swing	36%	51%	13%
Congressional District	CD-1	49%	46%	5%
	CD-2	46%	46%	8%
Region	North Country/Lakes	50%	39%	11%
	Monadnock/Dartmouth	39%	50%	11%
	Merrimack Valley	49%	45%	6%
	Seacoast/Border	49%	47%	4%
Total		47%	46%	7%

Do you approve or disapprove of the way Senator Jeanne Shaheen is doing her job?

		Strongly Approve	Somewhat Approve	Somewhat Disapprove	Strongly Disapprove	No Opinion	Never Heard Of
Gender	Female	34%	23%	8%	27%	8%	0%
	Male	20%	18%	12%	45%	5%	
Age	18-34	13%	22%	4%	42%	18%	
	35-54	22%	22%	10%	38%	7%	
	55-64	29%	19%	12%	37%	3%	
	65+	40%	18%	11%	28%	3%	0%
Education	High School or Less	15%	18%	8%	53%	6%	
	Some College/Associates Degree	21%	20%	12%	36%	10%	0%
	College Graduate	29%	20%	9%	36%	6%	
	Graduate/Professional School	42%	22%	8%	22%	5%	
Ideology	Very Conservative	0%	3%	8%	79%	9%	
	Somewhat Conservative	5%	17%	19%	54%	5%	0%
	Moderate	19%	17%	11%	43%	9%	
	Somewhat Liberal	53%	31%	3%	8%	6%	
	Very Liberal	56%	26%	6%	4%	8%	
Party Registration	Democratic	58%	27%	3%	8%	5%	
	Republican	3%	7%	14%	70%	7%	0%
	Undeclared	22%	26%	13%	32%	8%	
Party Identification	Democratic	55%	30%	3%	7%	5%	
	Republican	2%	8%	16%	66%	8%	0%
	Swing	9%	27%	14%	37%	13%	
Congressional District	CD-1	28%	21%	11%	35%	5%	0%
	CD-2	26%	20%	9%	37%	8%	
Region	North Country/Lakes	24%	26%	6%	33%	11%	
	Monadnock/Dartmouth	26%	13%	10%	41%	11%	
	Merrimack Valley	27%	22%	11%	35%	6%	0%
	Seacoast/Border	29%	20%	11%	36%	4%	
Total		27%	20%	10%	36%	7%	0%

Do you approve or disapprove of the way Senator Maggie Hassan is doing her job?				
		Approve	Disapprove	No Opinion
Gender	Female	54%	42%	5%
	Male	35%	61%	4%
Age	18-34	31%	56%	14%
	35-54	41%	54%	5%
	55-64	44%	53%	3%
	65+	56%	43%	1%
Education	High School or Less	30%	65%	5%
	Some College/Associates Degree	39%	55%	6%
	College Graduate	46%	50%	3%
	Graduate/Professional School	61%	35%	4%
Ideology	Very Conservative	2%	91%	7%
	Somewhat Conservative	15%	82%	2%
	Moderate	35%	58%	7%
	Somewhat Liberal	80%	15%	6%
	Very Liberal	86%	11%	3%
Party Registration	Democratic	84%	13%	3%
	Republican	6%	89%	5%
	Undeclared	43%	51%	6%
Party Identification	Democratic	85%	12%	3%
	Republican	6%	89%	5%
	Swing	29%	58%	13%
Congressional District	CD-1	45%	52%	4%
	CD-2	44%	50%	6%
Region	North Country/Lakes	43%	50%	7%
	Monadnock/Dartmouth	40%	56%	4%
	Merrimack Valley	46%	50%	4%
	Seacoast/Border	44%	51%	5%
Total		44%	51%	5%

Do you approve or disapprove of the way Senator Maggie Hassan is doing her job?

		Strongly Approve	Somewhat Approve	Somewhat Disapprove	Strongly Disapprove	No Opinion
Gender	Female	33%	21%	9%	32%	5%
	Male	18%	16%	11%	50%	4%
Age	18-34	13%	18%	11%	45%	14%
	35-54	22%	20%	11%	43%	5%
	55-64	27%	17%	9%	44%	3%
	65+	37%	19%	10%	33%	1%
Education	High School or Less	14%	16%	10%	55%	5%
	Some College/Associates Degree	21%	18%	11%	44%	6%
	College Graduate	28%	19%	11%	40%	3%
	Graduate/Professional School	40%	21%	8%	27%	4%
Ideology	Very Conservative	1%	2%	8%	83%	7%
	Somewhat Conservative	4%	11%	19%	63%	2%
	Moderate	18%	17%	9%	49%	7%
	Somewhat Liberal	50%	29%	5%	10%	5%
	Very Liberal	55%	31%	6%	5%	3%
Party Registration	Democratic	57%	26%	4%	9%	3%
	Republican	2%	4%	12%	77%	5%
	Undeclared	19%	24%	14%	37%	6%
Party Identification	Democratic	54%	32%	4%	8%	3%
	Republican	1%	5%	15%	74%	5%
	Swing	7%	22%	15%	43%	13%
Congressional District	CD-1	26%	18%	12%	40%	4%
	CD-2	25%	19%	8%	42%	6%
Region	North Country/Lakes	23%	20%	12%	38%	7%
	Monadnock/Dartmouth	22%	18%	8%	48%	4%
	Merrimack Valley	27%	20%	10%	40%	4%
	Seacoast/Border	27%	17%	11%	39%	5%
Total		26%	19%	10%	41%	5%

Do you approve or disapprove of the way Congressman Chris Pappas is doing his job?

		Approve	Disapprove	No Opinion
Gender	Female	49%	35%	16%
	Male	34%	56%	11%
Age	18-34	39%	40%	21%
	35-54	37%	49%	14%
	55-64	40%	48%	13%
	65+	51%	41%	9%
Education	High School or Less	29%	56%	15%
	Some College/Associates Degree	35%	52%	13%
	College Graduate	46%	41%	13%
	Graduate/Professional School	53%	35%	12%
Ideology	Very Conservative	6%	77%	16%
	Somewhat Conservative	15%	75%	10%
	Moderate	37%	42%	21%
	Somewhat Liberal	72%	16%	12%
	Very Liberal	83%	5%	12%
Party Registration	Democratic	79%	11%	10%
	Republican	8%	77%	15%
	Undeclared	39%	46%	15%
Party Identification	Democratic	78%	10%	12%
	Republican	9%	77%	14%
	Swing	29%	56%	15%
Region	North Country/Lakes	43%	44%	13%
	Merrimack Valley	39%	49%	11%
	Seacoast/Border	42%	44%	14%
Total		42%	45%	13%

Do you approve or disapprove of the way Congressman Chris Pappas is doing his job?

		Strongly Approve	Somewhat Approve	Somewhat Disapprove	Strongly Disapprove	No Opinion	Never Heard Of
Gender	Female	27%	23%	9%	26%	14%	2%
	Male	17%	17%	12%	43%	10%	0%
Age	18-34	15%	24%	5%	35%	21%	
	35-54	19%	18%	14%	35%	13%	1%
	55-64	19%	20%	10%	37%	9%	4%
	65+	31%	19%	10%	31%	9%	
Education	High School or Less	11%	17%	15%	42%	9%	6%
	Some College/Associates Degree	16%	19%	10%	42%	13%	1%
	College Graduate	25%	21%	8%	32%	13%	
	Graduate/Professional School	31%	22%	12%	23%	12%	0%
Ideology	Very Conservative	1%	6%	4%	73%	17%	
	Somewhat Conservative	3%	13%	20%	55%	9%	1%
	Moderate	20%	17%	12%	30%	15%	6%
	Somewhat Liberal	42%	30%	6%	10%	12%	
	Very Liberal	50%	33%	3%	2%	12%	
Party Registration	Democratic	48%	31%	2%	9%	10%	
	Republican	2%	6%	12%	65%	12%	3%
	Undeclared	17%	22%	16%	30%	14%	1%
Party Identification	Democratic	45%	33%	3%	7%	12%	
	Republican	2%	8%	15%	62%	12%	2%
	Swing	11%	18%	24%	32%	13%	2%
Region	North Country/Lakes	19%	25%	11%	33%	13%	
	Merrimack Valley	21%	19%	13%	36%	11%	
	Seacoast/Border	23%	19%	10%	34%	12%	2%
Total		22%	20%	11%	34%	12%	1%

Do you approve or disapprove of the way Congresswoman Annie Kuster is doing her job?

		Approve	Disapprove	No Opinion
Gender	Female	49%	35%	16%
	Male	31%	57%	12%
Age	18-34	26%	51%	23%
	35-54	35%	46%	18%
	55-64	46%	46%	9%
	65+	52%	40%	8%
Education	High School or Less	27%	62%	11%
	Some College/Associates Degree	34%	47%	19%
	College Graduate	41%	42%	17%
	Graduate/Professional School	62%	31%	7%
Ideology	Very Conservative	1%	84%	15%
	Somewhat Conservative	13%	77%	10%
	Moderate	22%	60%	18%
	Somewhat Liberal	81%	6%	13%
	Very Liberal	74%	9%	17%
Party Registration	Democratic	77%	11%	11%
	Republican	6%	82%	12%
	Undeclared	36%	45%	19%
Party Identification	Democratic	77%	10%	13%
	Republican	5%	81%	14%
	Swing	18%	56%	26%
Region	North Country/Lakes	41%	29%	30%
	Monadnock/Dartmouth	36%	50%	14%
	Merrimack Valley	44%	43%	13%
	Seacoast/Border	33%	53%	15%
Total		40%	45%	15%

Do you approve or disapprove of the way Congresswoman Annie Kuster is doing her job?

		Strongly Approve	Somewhat Approve	Somewhat Disapprove	Strongly Disapprove	No Opinion	Never Heard Of
Gender	Female	29%	20%	8%	26%	15%	1%
	Male	15%	15%	12%	45%	11%	1%
Age	18-34	9%	17%	12%	39%	21%	3%
	35-54	18%	17%	9%	38%	18%	1%
	55-64	23%	22%	9%	37%	9%	
	65+	38%	15%	12%	27%	7%	1%
Education	High School or Less	14%	13%	9%	54%	10%	1%
	Some College/Associates Degree	18%	16%	15%	32%	18%	1%
	College Graduate	23%	19%	8%	33%	15%	2%
	Graduate/Professional School	38%	24%	5%	26%	7%	1%
Ideology	Very Conservative		1%	8%	77%	13%	2%
	Somewhat Conservative	3%	9%	20%	57%	9%	2%
	Moderate	13%	9%	14%	47%	17%	
	Somewhat Liberal	44%	36%	1%	5%	13%	
	Very Liberal	47%	26%	5%	3%	15%	3%
Party Registration	Democratic	48%	29%	5%	6%	11%	
	Republican	1%	5%	12%	71%	11%	1%
	Undeclared	17%	19%	13%	32%	18%	1%
Party Identification	Democratic	46%	31%	6%	5%	13%	0%
	Republican	1%	4%	12%	69%	12%	1%
	Swing	5%	14%	22%	34%	22%	3%
Region	North Country/Lakes	23%	18%	4%	25%	30%	
	Monadnock/Dartmouth	23%	13%	11%	38%	14%	1%
	Merrimack Valley	23%	21%	8%	35%	12%	1%
	Seacoast/Border	15%	18%	18%	35%	12%	2%
Total		22%	18%	10%	35%	13%	1%

Which of the below issues is most important in determining how you vote?

		Economy/ Inflation	Government Spending/ Taxes	Abortion	Environment /Climate	Elections /Voting	Health Care	Gun Regula- tion	Immigra- tion	Educa- tion	National Security	Russian/ Chinese Expansionism	Crime	Other	Unsure
Gender	Female	23%	9%	18%	10%	8%	8%	5%	4%	3%	3%	1%	1%	4%	1%
	Male	34%	16%	5%	8%	9%	6%	4%	5%	2%	3%	3%	1%	4%	0%
Age	18-34	23%	17%	8%	12%	4%	13%	3%	5%	7%		2%	2%	4%	1%
	35-54	31%	14%	13%	8%	8%	6%	5%	3%	3%	3%	2%	1%	5%	0%
	55-64	28%	13%	12%	8%	9%	7%	5%	4%	2%	5%	2%	1%	3%	0%
	65+	28%	9%	13%	10%	11%	5%	5%	6%	2%	4%	2%	1%	3%	1%
Education	High School or Less	33%	15%	9%	4%	11%	8%	4%	8%	0%	3%	2%	1%	1%	0%
	Some College/ Associates Degree	27%	14%	10%	8%	8%	8%	5%	5%	3%	3%	3%	1%	5%	0%
	College Graduate	30%	13%	12%	10%	7%	6%	4%	4%	3%	4%	2%	1%	4%	1%
	Graduate/ Professional School	24%	8%	18%	15%	9%	6%	5%	2%	4%	3%	2%	1%	5%	
Ideology	Very Conservative	38%	21%	9%	0%	7%		2%	11%	0%	7%	1%	2%	2%	1%
	Somewhat Conservative	44%	20%	4%	3%	5%	2%	2%	6%	2%	6%	3%	2%	1%	0%
	Moderate	30%	16%	6%	5%	11%	5%	6%	5%	3%	1%	4%	1%	7%	0%
	Somewhat Liberal	19%	4%	20%	17%	9%	9%	7%	2%	4%	1%	1%	0%	5%	
	Very Liberal	4%	1%	24%	21%	11%	22%	6%		5%		0%		5%	1%
Party Registration	Democratic	13%	2%	20%	16%	12%	18%	7%	0%	3%	1%	2%	0%	5%	
	Republican	40%	21%	7%	0%	7%	0%	2%	8%	2%	7%	2%	2%	1%	1%
	Undeclared	31%	14%	9%	11%	6%	4%	5%	5%	3%	2%	3%	1%	5%	1%
Party Identification	Democratic	14%	3%	20%	18%	11%	14%	7%	1%	4%	2%	1%	0%	5%	0%
	Republican	41%	22%	5%	1%	7%	0%	2%	8%	2%	6%	3%	2%	2%	0%
	Swing	34%	17%	5%	4%	4%	3%	6%	7%	4%	2%	5%	1%	7%	2%
Congressional District	CD-1	30%	12%	12%	9%	7%	6%	6%	5%	3%	3%	2%	1%	3%	0%
	CD-2	26%	13%	11%	9%	10%	8%	4%	4%	3%	3%	3%	1%	4%	1%
Region	North Country/ Lakes	27%	14%	11%	11%	7%	5%	7%	3%	5%	4%	0%		3%	1%
	Monadnock/ Dartmouth	27%	12%	11%	9%	16%	6%	2%	4%	1%	2%	2%	1%	6%	1%
	Merrimack Valley	27%	13%	13%	9%	6%	8%	5%	4%	3%	4%	3%	1%	3%	0%
	Seacoast/ Border	30%	12%	12%	9%	8%	6%	5%	5%	2%	3%	2%	1%	4%	0%
Total		28%	13%	12%	9%	8%	7%	5%	5%	3%	3%	2%	1%	4%	0%

Broadly speaking, which of the below statements best describes your political position on abortion?				
		Pro-Choice	Pro-Life	Unsure
Gender	Female	58%	20%	22%
	Male	39%	25%	35%
Age	18-34	47%	25%	29%
	35-54	48%	19%	33%
	55-64	48%	24%	28%
	65+	51%	24%	24%
Education	High School or Less	39%	30%	31%
	Some College/Associates Degree	44%	28%	28%
	College Graduate	50%	20%	30%
	Graduate/Professional School	61%	13%	26%
Ideology	Very Conservative	6%	65%	29%
	Somewhat Conservative	15%	32%	52%
	Moderate	43%	19%	37%
	Somewhat Liberal	83%	6%	11%
	Very Liberal	96%	1%	3%
Party Registration	Democratic	85%	6%	9%
	Republican	15%	43%	42%
	Undeclared	46%	20%	34%
Party Identification	Democratic	85%	5%	10%
	Republican	13%	42%	45%
	Swing	41%	18%	41%
Congressional District	CD-1	47%	23%	30%
	CD-2	50%	22%	28%
Region	North Country/Lakes	42%	22%	36%
	Monadnock/Dartmouth	50%	25%	25%
	Merrimack Valley	50%	23%	28%
	Seacoast/Border	49%	22%	29%
Total		49%	23%	29%

Broadly speaking, which of the below statements best describes your political position on abortion?

		Hard Pro-Choice	Soft Pro-Choice	Neither	Soft Pro-Life	Hard Pro-Life
Gender	Female	42%	15%	22%	11%	9%
	Male	25%	14%	35%	15%	10%
Age	18-34	33%	14%	29%	8%	17%
	35-54	35%	13%	33%	12%	7%
	55-64	33%	15%	28%	15%	9%
	65+	35%	17%	24%	15%	10%
Education	High School or Less	27%	12%	31%	12%	17%
	Some College/Associates Degree	28%	16%	28%	18%	10%
	College Graduate	34%	16%	30%	11%	9%
	Graduate/Professional School	48%	13%	26%	8%	5%
Ideology	Very Conservative	3%	2%	29%	25%	40%
	Somewhat Conservative	6%	10%	52%	24%	8%
	Moderate	27%	17%	37%	10%	9%
	Somewhat Liberal	59%	24%	11%	4%	2%
	Very Liberal	81%	15%	3%		1%
Party Registration	Democratic	67%	18%	9%	5%	1%
	Republican	9%	6%	42%	21%	22%
	Undeclared	27%	19%	34%	12%	7%
Party Identification	Democratic	64%	21%	10%	4%	2%
	Republican	7%	6%	45%	23%	18%
	Swing	19%	21%	41%	9%	9%
Congressional District	CD-1	32%	15%	30%	14%	10%
	CD-2	37%	14%	28%	12%	10%
Region	North Country/Lakes	30%	12%	36%	10%	12%
	Monadnock/Dartmouth	38%	12%	25%	17%	8%
	Merrimack Valley	35%	15%	28%	12%	11%
	Seacoast/Border	33%	16%	29%	13%	9%
Total		34%	15%	29%	13%	10%

Which of the below statements best describes your personal position on abortion?				
		Pro-Choice	Pro-Life	Unsure
Gender	Female	77%	20%	3%
	Male	65%	31%	4%
Age	18-34	65%	31%	4%
	35-54	73%	24%	3%
	55-64	72%	25%	3%
	65+	73%	24%	3%
Education	High School or Less	65%	30%	5%
	Some College/Associates Degree	66%	31%	3%
	College Graduate	73%	24%	3%
	Graduate/Professional School	82%	16%	2%
Ideology	Very Conservative	21%	74%	5%
	Somewhat Conservative	60%	38%	3%
	Moderate	75%	19%	6%
	Somewhat Liberal	90%	6%	3%
	Very Liberal	99%	1%	0%
Party Registration	Democratic	94%	5%	1%
	Republican	46%	50%	4%
	Undeclared	73%	23%	4%
Party Identification	Democratic	95%	4%	1%
	Republican	48%	49%	3%
	Swing	70%	19%	11%
Congressional District	CD-1	70%	27%	3%
	CD-2	73%	23%	4%
Region	North Country/Lakes	72%	23%	5%
	Monadnock/Dartmouth	76%	21%	3%
	Merrimack Valley	70%	26%	3%
	Seacoast/Border	71%	27%	3%
Total		72%	25%	3%

Which of the below statements best describes your personal position on abortion?

		Hard Pro-Choice	Soft Pro-Choice	Soft Pro-Life	Hard Pro-Life	Unsure
Gender	Female	33%	44%	16%	4%	3%
	Male	25%	40%	26%	5%	4%
Age	18-34	35%	30%	22%	9%	4%
	35-54	28%	45%	20%	3%	3%
	55-64	28%	44%	21%	4%	3%
	65+	29%	44%	20%	4%	3%
Education	High School or Less	27%	38%	26%	4%	5%
	Some College/Associates Degree	24%	42%	25%	6%	3%
	College Graduate	31%	42%	19%	5%	3%
	Graduate/Professional School	36%	45%	14%	2%	2%
Ideology	Very Conservative	2%	19%	51%	23%	5%
	Somewhat Conservative	9%	51%	36%	2%	3%
	Moderate	28%	47%	16%	3%	6%
	Somewhat Liberal	41%	49%	4%	2%	3%
	Very Liberal	73%	26%	0%	0%	0%
Party Registration	Democratic	53%	41%	3%	1%	1%
	Republican	9%	37%	40%	10%	4%
	Undeclared	26%	48%	20%	3%	4%
Party Identification	Democratic	52%	43%	2%	2%	1%
	Republican	9%	39%	40%	8%	3%
	Swing	15%	54%	17%	3%	11%
Congressional District	CD-1	26%	44%	22%	5%	3%
	CD-2	33%	40%	19%	4%	4%
Region	North Country/Lakes	23%	49%	18%	5%	5%
	Monadnock/Dartmouth	36%	40%	16%	5%	3%
	Merrimack Valley	31%	40%	22%	4%	3%
	Seacoast/Border	27%	44%	22%	5%	3%
Total		29%	42%	21%	5%	3%

Do you support or oppose the recent Supreme Court decision overturning Roe v. Wade?				
		Support	Oppose	Unsure
Gender	Female	30%	68%	3%
	Male	47%	47%	6%
Age	18-34	43%	52%	5%
	35-54	39%	55%	6%
	55-64	37%	59%	4%
	65+	34%	63%	3%
Education	High School or Less	43%	47%	10%
	Some College/Associates Degree	43%	53%	4%
	College Graduate	38%	59%	3%
	Graduate/Professional School	27%	70%	3%
Ideology	Very Conservative	87%	9%	4%
	Somewhat Conservative	65%	29%	6%
	Moderate	33%	58%	10%
	Somewhat Liberal	9%	89%	2%
	Very Liberal	1%	99%	0%
Party Registration	Democratic	5%	93%	2%
	Republican	71%	21%	8%
	Undeclared	38%	58%	4%
Party Identification	Democratic	5%	93%	2%
	Republican	70%	23%	7%
	Swing	45%	49%	6%
Congressional District	CD-1	41%	56%	3%
	CD-2	35%	59%	6%
Region	North Country/Lakes	40%	56%	4%
	Monadnock/Dartmouth	33%	58%	10%
	Merrimack Valley	38%	58%	4%
	Seacoast/Border	39%	57%	3%
Total		38%	58%	5%

Do you support or oppose the recent Supreme Court decision overturning Roe v. Wade?

		Strongly Support	Somewhat Support	Somewhat Oppose	Strongly Oppose	Unsure
Gender	Female	23%	7%	3%	64%	3%
	Male	34%	13%	7%	40%	6%
Age	18-34	31%	12%	7%	45%	5%
	35-54	28%	11%	6%	49%	6%
	55-64	28%	9%	5%	54%	4%
	65+	26%	8%	5%	58%	3%
Education	High School or Less	35%	8%	4%	43%	10%
	Some College/Associates Degree	32%	10%	6%	47%	4%
	College Graduate	27%	11%	6%	53%	3%
	Graduate/Professional School	18%	8%	4%	66%	3%
Ideology	Very Conservative	76%	11%	1%	8%	4%
	Somewhat Conservative	43%	21%	11%	19%	6%
	Moderate	24%	9%	5%	53%	10%
	Somewhat Liberal	6%	3%	5%	84%	2%
	Very Liberal		1%	1%	98%	0%
Party Registration	Democratic	3%	2%	1%	92%	2%
	Republican	55%	16%	7%	14%	8%
	Undeclared	27%	11%	8%	50%	4%
Party Identification	Democratic	3%	2%	3%	91%	2%
	Republican	53%	17%	7%	16%	7%
	Swing	31%	13%	9%	40%	6%
Congressional District	CD-1	30%	10%	7%	49%	3%
	CD-2	26%	9%	4%	55%	6%
Region	North Country/Lakes	28%	12%	8%	48%	4%
	Monadnock/Dartmouth	25%	8%	3%	54%	10%
	Merrimack Valley	28%	10%	4%	54%	4%
	Seacoast/Border	29%	10%	7%	50%	3%
Total		28%	10%	5%	52%	5%

Does the recent Supreme Court decision overturning Roe v. Wade make you more or less motivated to vote in upcoming elections?				
		More	Less	No Difference
Gender	Female	59%	2%	39%
	Male	40%	1%	58%
Age	18-34	43%	2%	55%
	35-54	45%	1%	54%
	55-64	51%	2%	46%
	65+	59%	1%	40%
Education	High School or Less	38%	4%	59%
	Some College/Associates Degree	49%	2%	50%
	College Graduate	51%	1%	48%
	Graduate/Professional School	60%	0%	39%
Ideology	Very Conservative	33%		67%
	Somewhat Conservative	26%	2%	73%
	Moderate	39%	3%	58%
	Somewhat Liberal	76%	1%	23%
	Very Liberal	79%	1%	20%
Party Registration	Democratic	78%	3%	20%
	Republican	28%	1%	71%
	Undeclared	45%	1%	54%
Party Identification	Democratic	77%	2%	21%
	Republican	26%	1%	74%
	Swing	36%	2%	63%
Congressional District	CD-1	48%	1%	50%
	CD-2	51%	2%	47%
Region	North Country/Lakes	46%	0%	54%
	Monadnock/Dartmouth	45%		55%
	Merrimack Valley	53%	3%	44%
	Seacoast/Border	50%	1%	49%
Total		50%	1%	49%

Does the recent Supreme Court decision overturning Roe v. Wade make you more or less motivated to vote in upcoming elections?

		Much More	Somewhat More	Somewhat Less	Much Less	No Difference
Gender	Female	52%	7%	1%	0%	39%
	Male	32%	8%	1%	1%	58%
Age	18-34	35%	8%	2%		55%
	35-54	39%	6%	0%	1%	54%
	55-64	43%	8%	2%	0%	46%
	65+	50%	9%	0%	1%	40%
Education	High School or Less	33%	5%	3%	1%	59%
	Some College/Associates Degree	41%	8%	1%	1%	50%
	College Graduate	43%	8%	0%	0%	48%
	Graduate/Professional School	51%	10%	0%		39%
Ideology	Very Conservative	26%	6%			67%
	Somewhat Conservative	18%	7%	1%	1%	73%
	Moderate	36%	3%	2%	1%	58%
	Somewhat Liberal	64%	12%	1%	0%	23%
	Very Liberal	72%	7%	1%		20%
Party Registration	Democratic	68%	9%	2%	1%	20%
	Republican	22%	5%	1%	0%	71%
	Undeclared	37%	8%	0%	0%	54%
Party Identification	Democratic	67%	10%	2%	0%	21%
	Republican	20%	6%	1%	0%	74%
	Swing	29%	7%	1%	2%	62%
Congressional District	CD-1	42%	7%	1%	1%	50%
	CD-2	43%	9%	1%	0%	47%
Region	North Country/Lakes	40%	6%		0%	54%
	Monadnock/Dartmouth	40%	6%			55%
	Merrimack Valley	45%	8%	2%	1%	44%
	Seacoast/Border	41%	9%	1%	0%	49%
Total		42%	8%	1%	0%	49%

Do you believe that access to abortion will become more restricted in New Hampshire in the future?				
		Yes	No	Unsure
Gender	Female	35%	29%	36%
	Male	27%	38%	35%
Age	18-34	37%	40%	23%
	35-54	28%	38%	34%
	55-64	27%	30%	42%
	65+	36%	26%	37%
Education	High School or Less	20%	35%	45%
	Some College/Associates Degree	32%	36%	32%
	College Graduate	33%	33%	34%
	Graduate/Professional School	39%	27%	34%
Ideology	Very Conservative	22%	43%	35%
	Somewhat Conservative	17%	52%	31%
	Moderate	20%	34%	46%
	Somewhat Liberal	44%	20%	36%
	Very Liberal	61%	10%	29%
Party Registration	Democratic	53%	13%	34%
	Republican	16%	51%	33%
	Undeclared	26%	35%	39%
Party Identification	Democratic	49%	14%	36%
	Republican	15%	51%	34%
	Swing	23%	40%	37%
Congressional District	CD-1	31%	36%	33%
	CD-2	32%	31%	37%
Region	North Country/Lakes	27%	37%	36%
	Monadnock/Dartmouth	30%	27%	42%
	Merrimack Valley	32%	33%	36%
	Seacoast/Border	33%	35%	31%
Total		32%	33%	35%

Which of the below statements best describes how important the issue of abortion will be in determining your vote in upcoming elections?

		Extremely/Very	Somewhat/Not
Gender	Female	72%	28%
	Male	48%	52%
Age	18-34	62%	38%
	35-54	52%	48%
	55-64	62%	38%
	65+	68%	32%
Education	High School or Less	49%	51%
	Some College/Associates Degree	57%	43%
	College Graduate	64%	36%
	Graduate/Professional School	69%	31%
Ideology	Very Conservative	53%	47%
	Somewhat Conservative	31%	69%
	Moderate	48%	52%
	Somewhat Liberal	84%	16%
	Very Liberal	95%	5%
Party Registration	Democratic	89%	11%
	Republican	37%	63%
	Undeclared	56%	44%
Party Identification	Democratic	87%	13%
	Republican	37%	63%
	Swing	42%	58%
Congressional District	CD-1	57%	43%
	CD-2	63%	37%
Region	North Country/Lakes	59%	41%
	Monadnock/Dartmouth	62%	38%
	Merrimack Valley	64%	36%
	Seacoast/Border	56%	44%
Total		60%	40%

Which of the below statements best describes how important the issue of abortion will be in determining your vote in upcoming elections?

		Extremely Important	Very Important	Somewhat Important	Unimportant
Gender	Female	12%	60%	14%	15%
	Male	7%	41%	25%	27%
Age	18-34	7%	55%	17%	22%
	35-54	8%	44%	21%	27%
	55-64	13%	49%	20%	18%
	65+	9%	59%	17%	15%
Education	High School or Less	7%	42%	18%	33%
	Some College/Associates Degree	8%	49%	24%	19%
	College Graduate	12%	52%	15%	21%
	Graduate/Professional School	11%	58%	17%	14%
Ideology	Very Conservative	9%	45%	24%	23%
	Somewhat Conservative	2%	29%	32%	37%
	Moderate	6%	42%	21%	31%
	Somewhat Liberal	12%	72%	10%	6%
	Very Liberal	21%	74%	3%	3%
Party Registration	Democratic	16%	72%	7%	5%
	Republican	5%	32%	28%	35%
	Undeclared	7%	49%	22%	23%
Party Identification	Democratic	15%	72%	8%	4%
	Republican	4%	33%	28%	35%
	Swing	6%	36%	27%	31%
Congressional District	CD-1	9%	48%	21%	22%
	CD-2	9%	54%	17%	20%
Region	North Country/Lakes	15%	44%	25%	16%
	Monadnock/Dartmouth	7%	55%	12%	26%
	Merrimack Valley	10%	54%	19%	17%
	Seacoast/Border	8%	48%	21%	24%
Total		9%	51%	19%	21%

How much attention are you paying to the upcoming primary elections in September? (GOP ID Only)					
		A Lot	Some	A Little	None
Gender	Female	63%	28%	6%	3%
	Male	60%	29%	8%	2%
Age	18-34	50%	27%	17%	6%
	35-54	64%	28%	5%	3%
	55-64	62%	31%	8%	0%
	65+	66%	29%	4%	1%
Education	High School or Less	53%	39%	7%	1%
	Some College/Associates Degree	63%	25%	8%	4%
	College Graduate	66%	24%	6%	4%
	Graduate/Professional School	61%	29%	9%	
Ideology	Very Conservative	69%	20%	10%	1%
	Somewhat Conservative	60%	30%	7%	3%
	Moderate	54%	41%	2%	2%
	Somewhat Liberal	52%	24%	17%	7%
	Very Liberal		100%		
Party Registration	Republican	63%	27%	8%	3%
	Undeclared	58%	34%	7%	1%
Congressional District	CD-1	63%	28%	7%	2%
	CD-2	60%	30%	8%	2%
Region	North Country/Lakes	56%	27%	13%	4%
	Monadnock/Dartmouth	52%	41%	3%	4%
	Merrimack Valley	63%	25%	11%	2%
	Seacoast/Border	67%	27%	4%	2%
Total		61%	29%	7%	2%

If the Republican primary election for the Governor were held today, for which of the below candidates would you vote? (GOP ID Only)

		Sununu	Testerman	Riley	Someone Else	Unsure
Gender	Female	66%	6%	5%	1%	23%
	Male	69%	5%	6%	3%	17%
Age	18-34	48%	8%	12%	3%	29%
	35-54	67%	7%	4%	3%	19%
	55-64	72%	5%	5%	2%	16%
	65+	76%	3%	3%	1%	17%
Education	High School or Less	72%	8%	4%		17%
	Some College/Associates Degree	63%	5%	8%	3%	21%
	College Graduate	68%	6%	3%	3%	20%
	Graduate/Professional School	72%	4%	4%	2%	18%
Ideology	Very Conservative	52%	8%	9%	2%	30%
	Somewhat Conservative	76%	4%	3%	2%	14%
	Moderate	64%	6%	6%	2%	21%
	Somewhat Liberal	85%	4%		8%	4%
Party Registration	Republican	68%	5%	5%	3%	19%
	Undeclared	67%	7%	5%	1%	20%
Congressional District	CD-1	70%	3%	7%	2%	18%
	CD-2	66%	8%	3%	2%	21%
Region	North Country/Lakes	71%	2%	2%	1%	23%
	Monadnock/Dartmouth	57%	11%	4%	1%	26%
	Merrimack Valley	73%	8%	3%	2%	15%
	Seacoast/Border	66%	1%	10%	3%	20%
Attention to Primary	A Lot	68%	7%	8%	2%	16%
	Some	68%	4%	2%	2%	24%
	A Little	67%	5%		3%	25%
Total		68%	6%	5%	2%	19%

If the Republican primary election for the US Senate were held today, for which of the below candidates would you vote? (GOP ID Only)

		Bolduc	Morse	Smith	Fenton	Manshara mani	Someone Else	Unsure
Gender	Female	30%	15%	2%	4%	2%	1%	46%
	Male	33%	17%	6%	5%	2%	3%	34%
Age	18-34	29%	16%	11%	7%		6%	32%
	35-54	32%	14%	3%	3%	3%	1%	43%
	55-64	31%	16%	3%	5%	2%	3%	41%
	65+	36%	18%	4%	2%	2%	2%	35%
Education	High School or Less	28%	15%	4%	6%	2%	2%	43%
	Some College/Associates Degree	36%	13%	3%	4%	0%	3%	40%
	College Graduate	30%	20%	6%	3%	4%	1%	36%
	Graduate/Professional School	33%	19%	5%	2%	2%	3%	36%
Ideology	Very Conservative	41%	14%	4%	1%	1%	3%	36%
	Somewhat Conservative	34%	19%	5%	4%	2%	2%	35%
	Moderate	13%	9%	5%	10%	3%	1%	59%
	Somewhat Liberal	15%	23%	4%	8%	4%	8%	38%
Party Registration	Republican	33%	16%	5%	4%	2%	3%	37%
	Undeclared	30%	16%	4%	5%	1%	2%	42%
Congressional District	CD-1	35%	17%	5%	3%	3%	1%	36%
	CD-2	29%	15%	4%	5%	1%	4%	43%
Region	North Country/Lakes	37%	16%	1%	3%		4%	39%
	Monadnock/Dartmouth	28%	10%	1%	7%	2%	2%	49%
	Merrimack Valley	32%	16%	4%	3%	3%	3%	38%
	Seacoast/Border	33%	19%	7%	4%	1%	1%	35%
Attention to Primary	A Lot	38%	16%	4%	4%	2%	2%	33%
	Some	21%	18%	5%	5%	2%	0%	48%
	A Little	26%	6%	2%			11%	55%
Total		32%	16%	4%	4%	2%	2%	39%

If the Republican primary election for the US House of Representatives were held today, for which of the below candidates would you vote? (CD-1 GOP ID Only)

		Mowers	Leavitt	Brown	Baxter	Prescott	Someone Else	Unsure
Gender	Female	24%	20%	8%	7%		1%	41%
	Male	26%	22%	10%	9%	4%	1%	28%
Age	18-34	19%	33%		4%	4%		41%
	35-54	26%	20%	9%	12%	4%	1%	28%
	55-64	22%	20%	10%	6%	2%		41%
	65+	31%	17%	11%	10%	1%	2%	28%
Education	High School or Less	34%	13%	10%	9%		3%	32%
	Some College/Associates Degree	20%	25%	11%	10%	1%		32%
	College Graduate	26%	25%	5%	8%	2%	1%	33%
	Graduate/Professional School	24%	16%	8%	5%	8%		39%
Ideology	Very Conservative	23%	20%	10%	14%	2%		31%
	Somewhat Conservative	30%	22%	9%	7%	2%	1%	29%
	Moderate	5%	26%	5%	5%	2%		57%
	Somewhat Liberal	33%		7%	7%			53%
Party Registration	Republican	25%	22%	10%	10%	2%	1%	30%
	Undeclared	25%	19%	7%	6%	3%		40%
Region	North Country/Lakes	16%	25%	5%	8%		1%	44%
	Merrimack Valley	30%	14%	10%	10%	4%		32%
	Seacoast/Border	26%	23%	10%	8%	2%	1%	31%
Attention to Primary	A Lot	30%	24%	10%	11%	2%	1%	23%
	Some	20%	20%	7%	5%	2%		47%
	A Little	7%	3%	10%		3%		76%
Total		25%	21%	9%	8%	2%	0%	33%

If the Republican primary election for the US House of Representatives were held today, for which of the below candidates would you vote? (CD-2 GOP ID Only)

		Burns	Hansel	Williams	Someone Else	Unsure
Gender	Female	12%	12%	8%	4%	65%
	Male	13%	8%	7%	7%	65%
Age	18-34	7%		10%	13%	69%
	35-54	14%	11%	6%	4%	66%
	55-64	14%	10%	10%	4%	61%
	65+	12%	13%	4%	5%	66%
Education	High School or Less	7%	8%		6%	80%
	Some College/Associates Degree	11%	7%	12%	7%	64%
	College Graduate	19%	14%	7%	3%	57%
	Graduate/Professional School	15%	12%	12%	8%	54%
Ideology	Very Conservative	19%	8%	7%	4%	62%
	Somewhat Conservative	12%	14%	8%	4%	62%
	Moderate	6%	4%	5%	10%	76%
	Somewhat Liberal			17%	25%	58%
Party Registration	Republican	12%	11%	6%	4%	67%
	Undeclared	14%	7%	10%	8%	61%
Region	North Country/Lakes	29%	4%	8%	4%	54%
	Monadnock/Dartmouth	6%	11%	9%	8%	66%
	Merrimack Valley	15%	9%	8%	3%	65%
	Seacoast/Border	9%	11%	4%	9%	67%
Attention to Primary	A Lot	16%	12%	10%	6%	56%
	Some	5%	8%	2%	7%	78%
	A Little	13%		3%		84%
Total		12%	10%	7%	6%	65%

If the election for NH Governor were held today, and the candidates were Chris Sununu and Tom Sherman, for whom would you vote?

		Sununu	Sherman	Someone Else	Unsure
Gender	Female	37%	35%	4%	24%
	Male	59%	24%	4%	13%
Age	18-34	50%	27%	8%	15%
	35-54	49%	29%	4%	18%
	55-64	47%	27%	4%	21%
	65+	45%	34%	2%	19%
Education	High School or Less	60%	18%	3%	18%
	Some College/Associates Degree	50%	23%	6%	20%
	College Graduate	48%	31%	4%	16%
	Graduate/Professional School	34%	45%	3%	18%
Ideology	Very Conservative	74%	4%	8%	14%
	Somewhat Conservative	78%	6%	2%	14%
	Moderate	53%	18%	7%	23%
	Somewhat Liberal	23%	51%	4%	23%
	Very Liberal	6%	73%	3%	18%
Party Registration	Democratic	12%	63%	3%	21%
	Republican	80%	4%	6%	10%
	Undeclared	51%	22%	4%	22%
Party Identification	Democratic	15%	58%	3%	24%
	Republican	79%	4%	5%	12%
	Swing	60%	13%	6%	22%
Congressional District	CD-1	51%	28%	4%	17%
	CD-2	45%	31%	4%	20%
Region	North Country/Lakes	51%	28%	5%	16%
	Monadnock/Dartmouth	44%	30%	3%	22%
	Merrimack Valley	48%	29%	4%	19%
	Seacoast/Border	48%	30%	5%	17%
Total		48%	29%	4%	18%

Do you think Senator Maggie Hassan has done a good enough job to deserve re-election, or is it time to give someone new a chance?

		Deserves Re-election	Someone New	Unsure
Gender	Female	46%	44%	10%
	Male	31%	63%	6%
Age	18-34	25%	60%	15%
	35-54	35%	56%	8%
	55-64	41%	53%	7%
	65+	51%	44%	5%
Education	High School or Less	26%	68%	6%
	Some College/Associates Degree	32%	57%	10%
	College Graduate	41%	51%	7%
	Graduate/Professional School	55%	37%	8%
Ideology	Very Conservative	2%	91%	6%
	Somewhat Conservative	11%	84%	5%
	Moderate	30%	62%	8%
	Somewhat Liberal	73%	16%	11%
	Very Liberal	75%	13%	11%
Party Registration	Democratic	76%	15%	9%
	Republican	4%	92%	4%
	Undeclared	36%	52%	11%
Party Identification	Democratic	77%	14%	9%
	Republican	4%	91%	5%
	Swing	18%	62%	19%
Congressional District	CD-1	40%	54%	7%
	CD-2	38%	52%	10%
Region	North Country/Lakes	38%	50%	12%
	Monadnock/Dartmouth	33%	59%	9%
	Merrimack Valley	41%	51%	8%
	Seacoast/Border	40%	52%	8%
Total		39%	53%	8%

Do you think Congressman Chris Pappas has done a good enough job to deserve re-election, or is it time to give someone new a chance?

		Deserves Re-election	Someone New	Unsure
Gender	Female	44%	36%	20%
	Male	32%	58%	9%
Age	18-34	38%	46%	16%
	35-54	34%	52%	14%
	55-64	33%	49%	18%
	65+	47%	41%	12%
Education	High School or Less	26%	57%	16%
	Some College/Associates Degree	33%	54%	13%
	College Graduate	40%	44%	16%
	Graduate/Professional School	49%	35%	16%
Ideology	Very Conservative	6%	82%	13%
	Somewhat Conservative	14%	75%	11%
	Moderate	33%	44%	24%
	Somewhat Liberal	65%	19%	15%
	Very Liberal	80%	6%	15%
Party Registration	Democratic	75%	13%	12%
	Republican	8%	82%	11%
	Undeclared	34%	46%	20%
Party Identification	Democratic	71%	12%	17%
	Republican	9%	80%	12%
	Swing	25%	54%	21%
Region	North Country/Lakes	37%	47%	16%
	Merrimack Valley	36%	53%	11%
	Seacoast/Border	39%	44%	16%
Total		38%	47%	15%

Do you think Congresswoman Annie Kuster has done a good enough job to deserve re-election, or is it time to give someone new a chance?

		Deserves Re-election	Someone New	Unsure
Gender	Female	43%	44%	14%
	Male	28%	60%	13%
Age	18-34	26%	59%	14%
	35-54	29%	56%	15%
	55-64	38%	48%	14%
	65+	49%	43%	9%
Education	High School or Less	26%	64%	10%
	Some College/Associates Degree	29%	56%	15%
	College Graduate	36%	50%	14%
	Graduate/Professional School	54%	34%	12%
Ideology	Very Conservative		85%	15%
	Somewhat Conservative	9%	83%	8%
	Moderate	20%	69%	11%
	Somewhat Liberal	70%	12%	17%
	Very Liberal	69%	15%	16%
Party Registration	Democratic	70%	16%	13%
	Republican	3%	89%	8%
	Undeclared	32%	51%	17%
Party Identification	Democratic	70%	15%	15%
	Republican	3%	89%	8%
	Swing	11%	63%	26%
Region	North Country/Lakes	38%	45%	18%
	Monadnock/Dartmouth	31%	60%	9%
	Merrimack Valley	39%	47%	15%
	Seacoast/Border	33%	51%	17%
Total		36%	51%	13%

WEIGHTED DEMOGRAPHICS

August 9-11, 2022
 n = 1898
 New Hampshire Registered Voters
 MoE +/- 2.3%

Gender			
		Frequency	Percent
	Female	979	52
	Male	919	48
	Total	1898	100

Age			
		Frequency	Percent
	18-34	296	16
	35-54	615	32
	55-64	495	26
	65+	492	26
	Total	1898	100

Education			
		Frequency	Percent
	High School or Less	317	17
	Some College/Associates Degree	638	34
	College Graduate	528	28
	Graduate/Professional School	416	22
	Total	1898	100

Ideology			
		Frequency	Percent
	Very Conservative	243	13
	Somewhat Conservative	528	28
	Moderate	359	19
	Somewhat Liberal	490	26
	Very Liberal	279	15
	Conservative	771	41
	Moderate	359	19
	Liberal	769	41
	Total	1898	100

Party Registration			
		Frequency	Percent
	Democratic	593	31
	Republican	581	31
	Undeclared	724	38
	Total	1898	100
CD-1	Democratic	288	30
	Republican	296	31
	Undeclared	378	39
	Total	961	100
CD-2	Democratic	305	33
	Republican	285	30
	Undeclared	347	37
	Total	937	100

Party Identification			
		Frequency	Percent
	Democratic	863	45
	Republican	840	44
	Swing	195	10
	Total	1898	100
CD-1	Democratic	420	44
	Republican	433	45
	Swing	108	11
	Total	961	100
CD-2	Democratic	443	47
	Republican	407	43
	Swing	87	9
	Total	937	100

Congressional District			
		Frequency	Percent
	CD-1	961	51
	CD-2	937	49
	Total	1898	100

Region			
		Frequency	Percent
	North Country/Lakes	205	11
	Monadnock/Dartmouth	302	16
	Merrimack Valley	744	39
	Seacoast/Border	647	34
	Total	1898	100

ABOUT THE SAINT ANSELM COLLEGE SURVEY CENTER: The Saint Anselm College Survey Center (SACSC) was founded in the wake of the 2016 election, and launched its first poll in February 2018 as the midterm elections were getting underway. Housed within the New Hampshire Institute of Politics at Saint Anselm College, the Center conducts quarterly polls of New Hampshire voter attitudes and additional polls as circumstances warrant. This research supports the academic mission of the College, and provides students with a practical education in survey techniques while providing the public at large with insight into political opinion trends that impact the state's federal and gubernatorial elections. The Center's political surveys were the most accurate New Hampshire election polling throughout the 2020 cycle. To support its operations, the Center performs commissioned research on behalf of nonprofit organizations and corporations.

For more information on SACSC, please visit: anselm.edu/new-hampshire-institute-politics/polling

For inquiries, please contact: nhioppoll@anselm.edu