

# A SURVEY OF NEW HAMPSHIRE VOTER ATTITUDES

---

CONDUCTED  
August 24-26, 2021

**Neil Levesque**

EXECUTIVE DIRECTOR,  
NEW HAMPSHIRE INSTITUTE OF POLITICS

FACULTY ADVISOR

**Tauna Sisco**

CHAIR, DEPARTMENT OF SOCIOLOGY



**NEW HAMPSHIRE  
INSTITUTE OF POLITICS**

Saint Anselm College

<b>Survey Notes</b>	<b>3</b>
<b>Executive Summary</b>	<b>4</b>
<b>Charts</b>	<b>5</b>
<b>Weighted Marginals</b>	<b>9</b>
<b>Weighted Tables</b>	<b>15</b>
<b>Demographics</b>	<b>37</b>
<b>About the SACSC</b>	<b>40</b>

These results are from the Saint Anselm College Survey Center poll based on online surveys of 1855 New Hampshire registered voters. Surveys were collected between August 24<sup>th</sup> and 26<sup>th</sup>, 2021, from cell phone users randomly drawn from a sample of registered voters reflecting the demographic and partisan characteristics of the voting population. Names were presented in random order for the job approval series and the Senate ballot test. The survey has an overall margin of sampling error of +/- 2.3% with a confidence interval of 95%; the margin of sampling error for questions specific to congressional districts are 3.1% for the 1<sup>st</sup> Congressional District and 3.3% for the 2<sup>nd</sup> Congressional District. The data are weighted for age, gender, geography, and education based on a voter demographic model derived from historical voting patterns, but are not weighted by party registration or party identification.

New Hampshire Institute of Politics Executive Director Neil Levesque summarized the results, saying, “President Joe Biden’s job approval is collapsing in New Hampshire, putting Democratic incumbents in jeopardy. From an 8-point net approval in February, Biden’s job approval has inverted and now sits at 44%-55%, slightly worse than Donald Trump (45%-55%) in our pre-election poll last fall; 49% of voters strongly disapprove of his performance. 62% of voters now think that the country is on the wrong track, up from 55% in February, while only 28% think we’re on the right track. Most ominous for New Hampshire’s all-Democratic congressional delegation, the generic congressional ballot has swung to the Republicans (46%-43%) for the first time in the history of this poll.

“Biden’s job approval has steadily declined since he took office in response to several challenges. In this poll, he is bearing the responsibility for the current situation in Afghanistan (44%) more than his predecessors (Bush 27%, Trump 13%, and Obama 4%). This is energizing Republicans: 43% of voters are more inclined to vote for Republican candidates in next year’s election based on Biden’s handling of the situation, versus 14% that are more inclined to vote for Democratic candidates. This polarization is driving a voter intensity disparity benefitting Republicans: 97% of Republican voters disapprove of Biden’s performance versus only 85% of Democratic voters that approve. 92% of Republican voters would vote for a congressional candidate from their party today versus only 86% of Democratic voters who would vote for a candidate from their party.

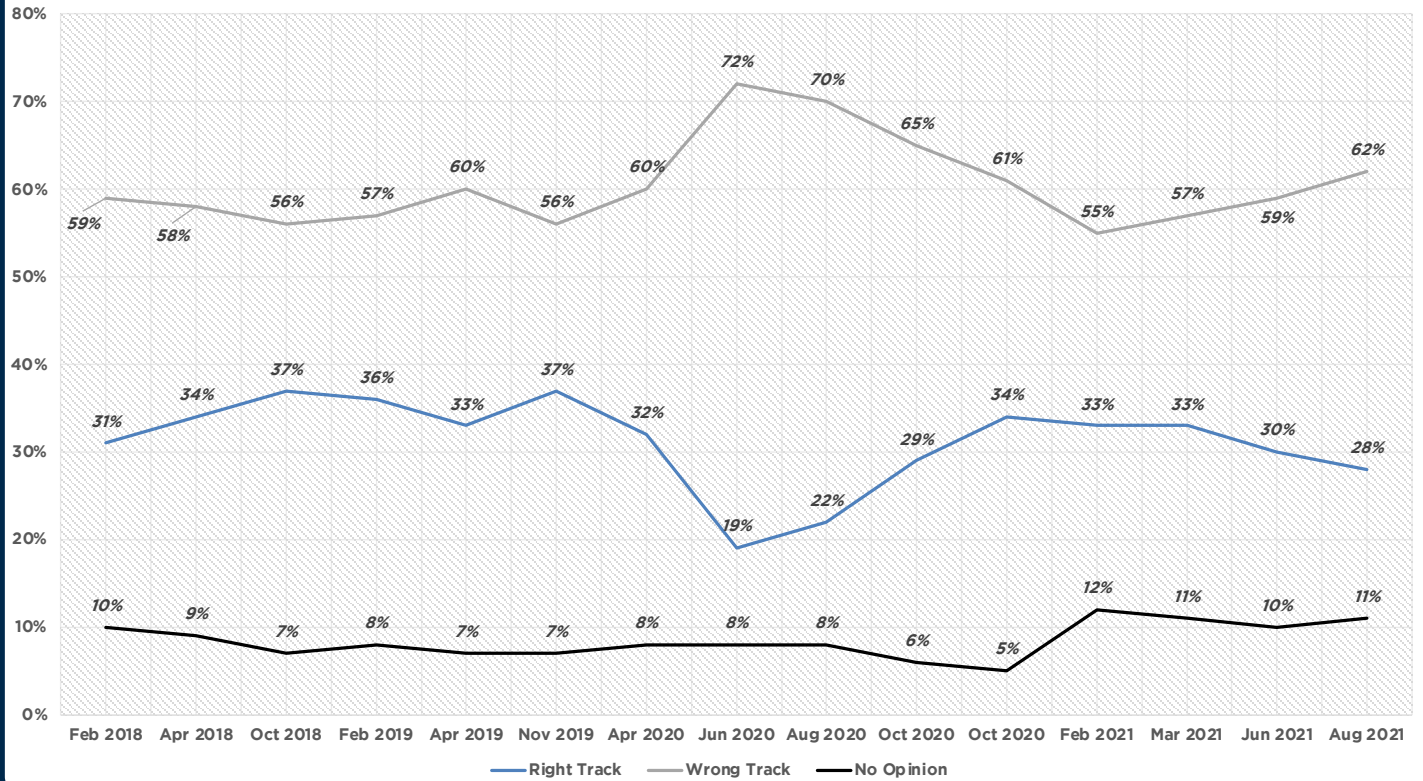
“Senator Maggie Hassan’s job approval has actually improved slightly since our last poll, but is still at a net 4-point negative at 44%-48%. Congressman Chris Pappas is even at 42%-42%, and Congresswoman Annie Kuster is at a net 1-point positive at 43%-42%. These represent the lowest net approval for both Representatives in the history of this poll. They all benefit from less voter polarization relative to Biden; while all of them roughly share Biden’s level of approval, they don’t suffer from his level of disapproval. This suggests that efforts by all of them to distinguish themselves from the Democratic Party at-large and localize their re-election races is beginning to show some effectiveness.

“Governor Chris Sununu’s net job approval is beginning to narrow in this polarized environment, perhaps as Democratic voters begin to evaluate him as a challenger to Senator Hassan. From a net 45-point advantage in our pre-election poll last fall, Sununu now sits at a 30-point positive approval at 64%-34%. In a hypothetical U.S. Senate matchup against Hassan, Sununu currently enjoys a 49%-40% lead, up from 47%-41% in March. This margin is driven by the intensity disparity noted above: Sununu leads among Republican voters 89%-2%, while Democratic voters are a bit less intense for Hassan at 83%-11%; undeclared voters favor Sununu 50%-34%. It’s worth noting that while males favor Sununu by a wide 55%-34% margin, he trails Hassan among women by only 2 points, 44%-46%.

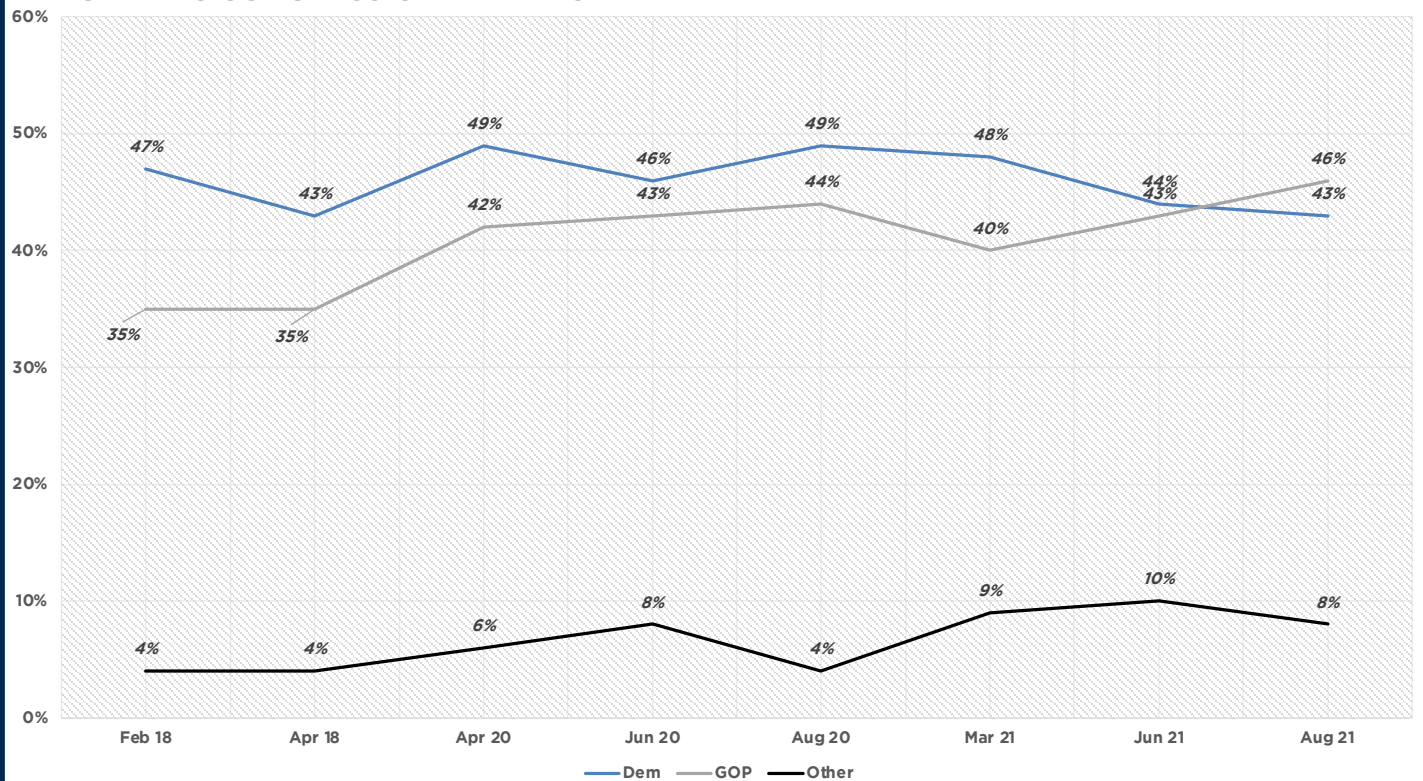
“New Hampshire voters are split on a possible vaccination mandate, with 50% supportive and 47% opposed. This is an issue that falls along partisan lines, with 85% of Democratic voters in support, 80% of Republican voters opposed, and undeclared voters split at 48%-49%. 82% of Democratic voters will get a booster shot as soon as available, while only 24% of Republican voters will; 49% of Republicans would refuse a booster shot altogether.

“The 2022 cycle is shaping up as quite dynamic as political cross-currents on issues from inflation to COVID to government spending to energy to Afghanistan present serious challenges for incumbents to negotiate. Control of Congress is a stake, and the races here in New Hampshire may play as important a role in determining who wields the gavel in both chambers as any state,” Levesque concluded.

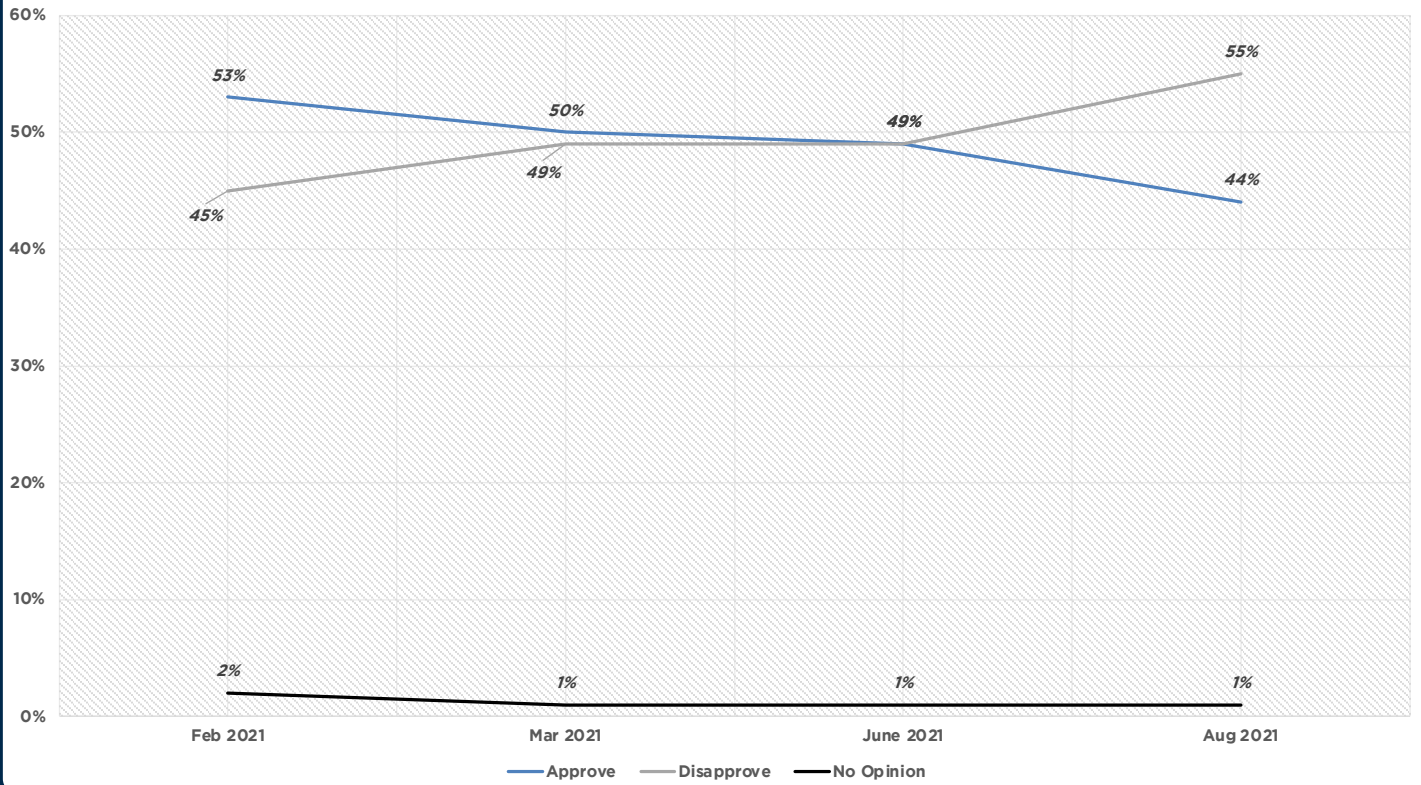
## RIGHT TRACK VS WRONG TRACK



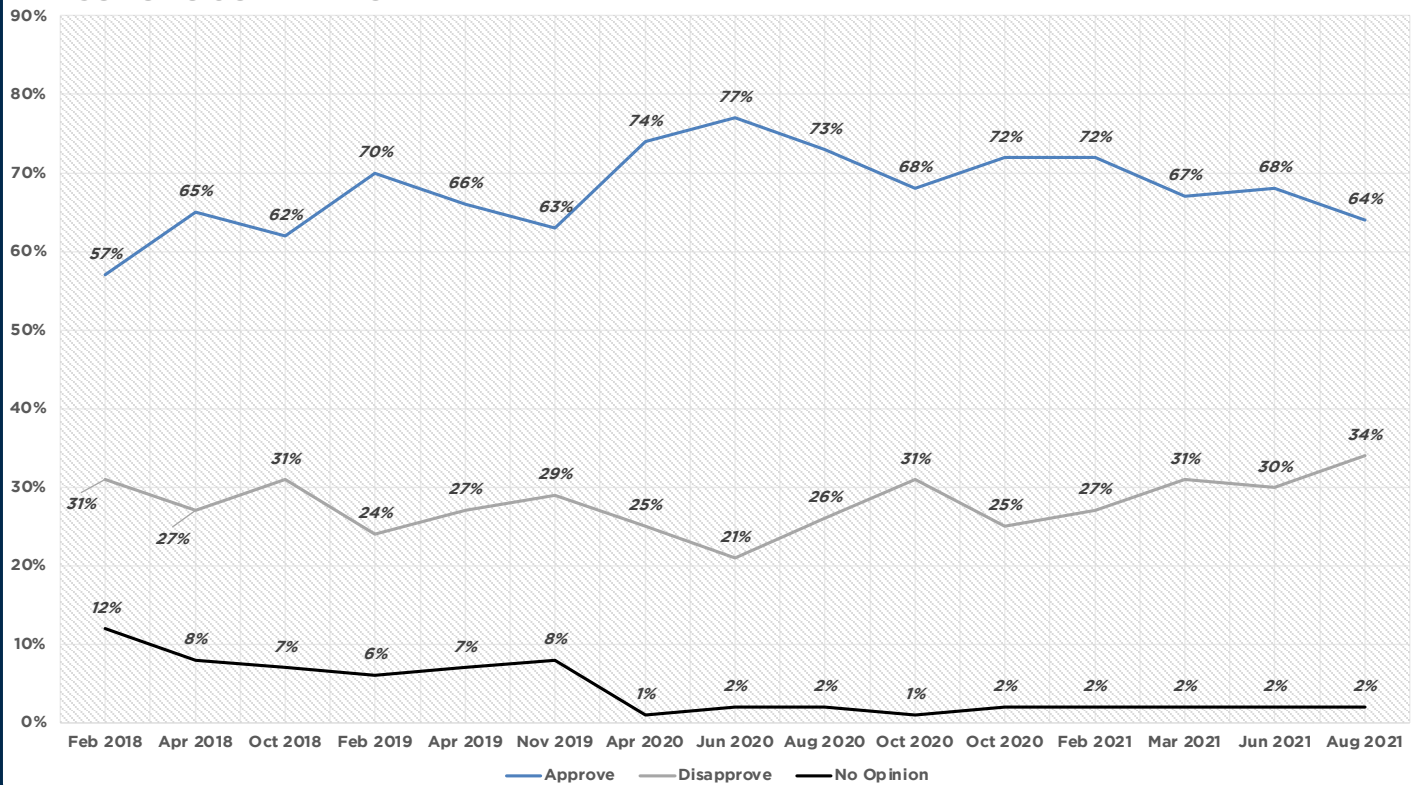
## GENERIC CONGRESSIONAL BALLOT



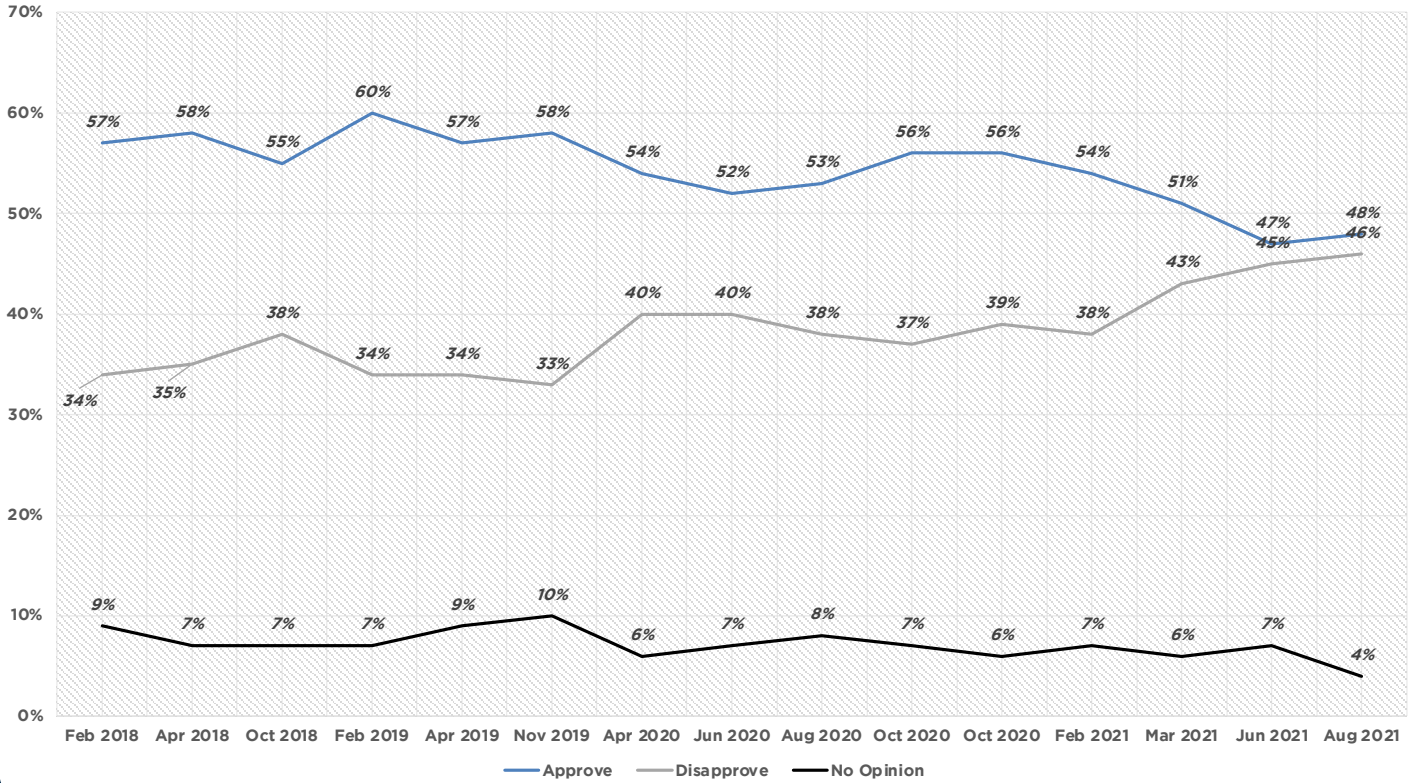
### BIDEN JOB APPROVAL



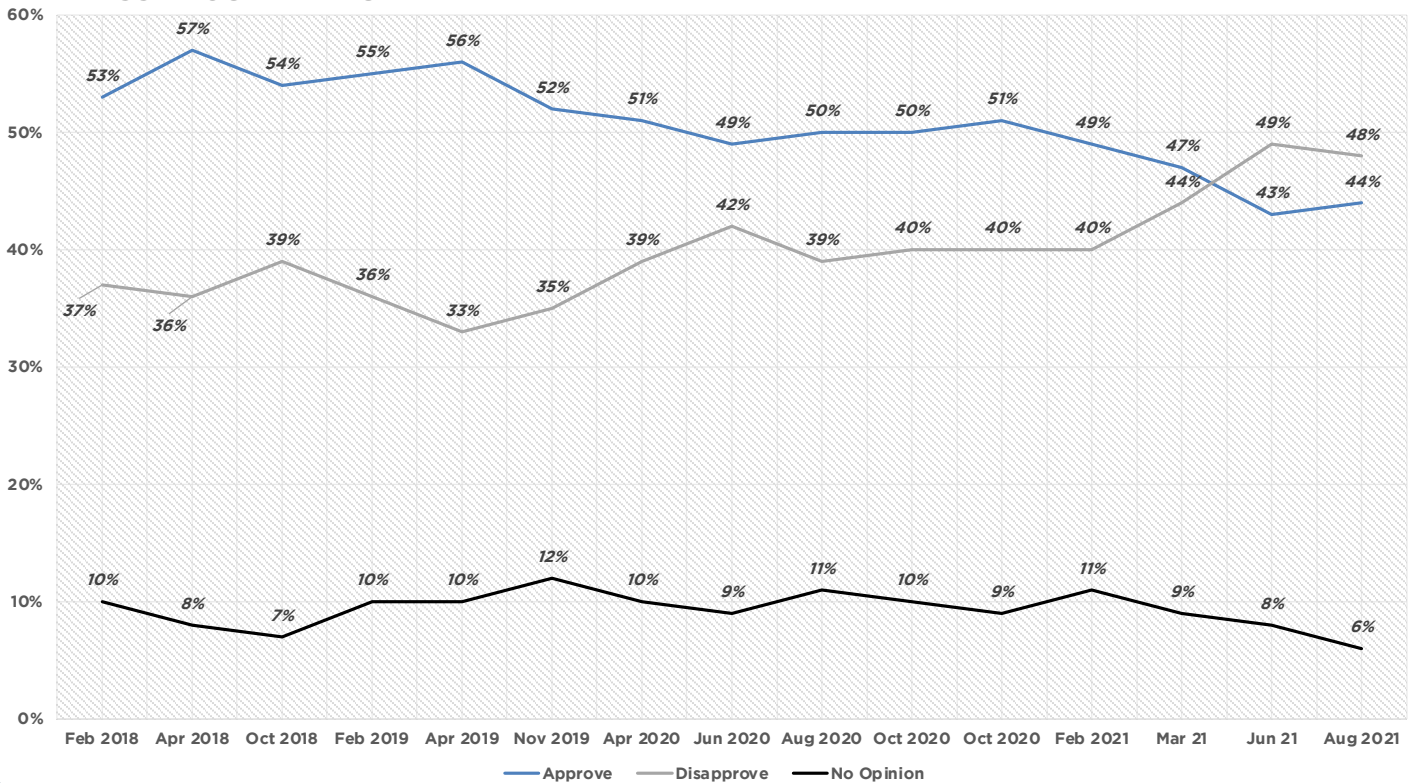
### SUNUNU JOB APPROVAL



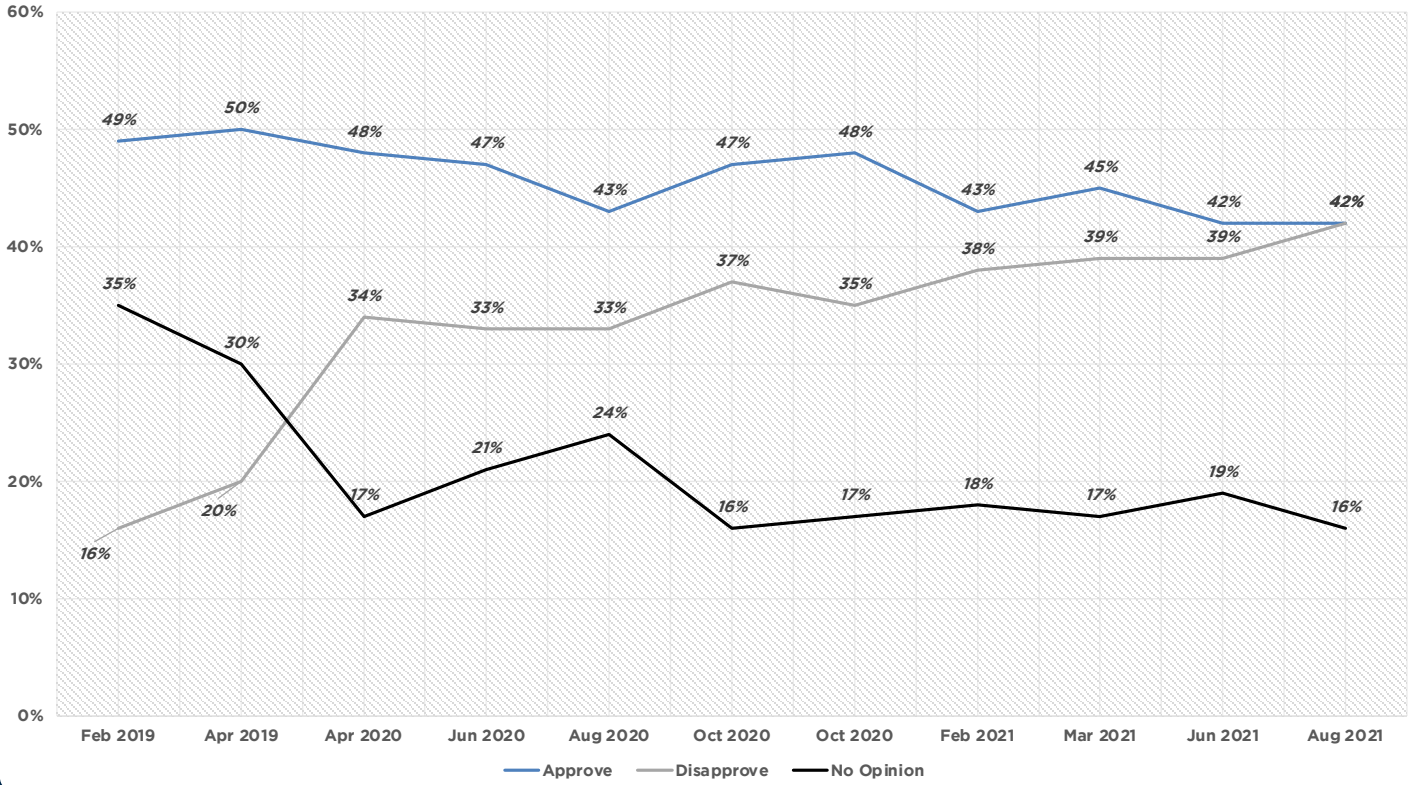
### SHAHEEN JOB APPROVAL



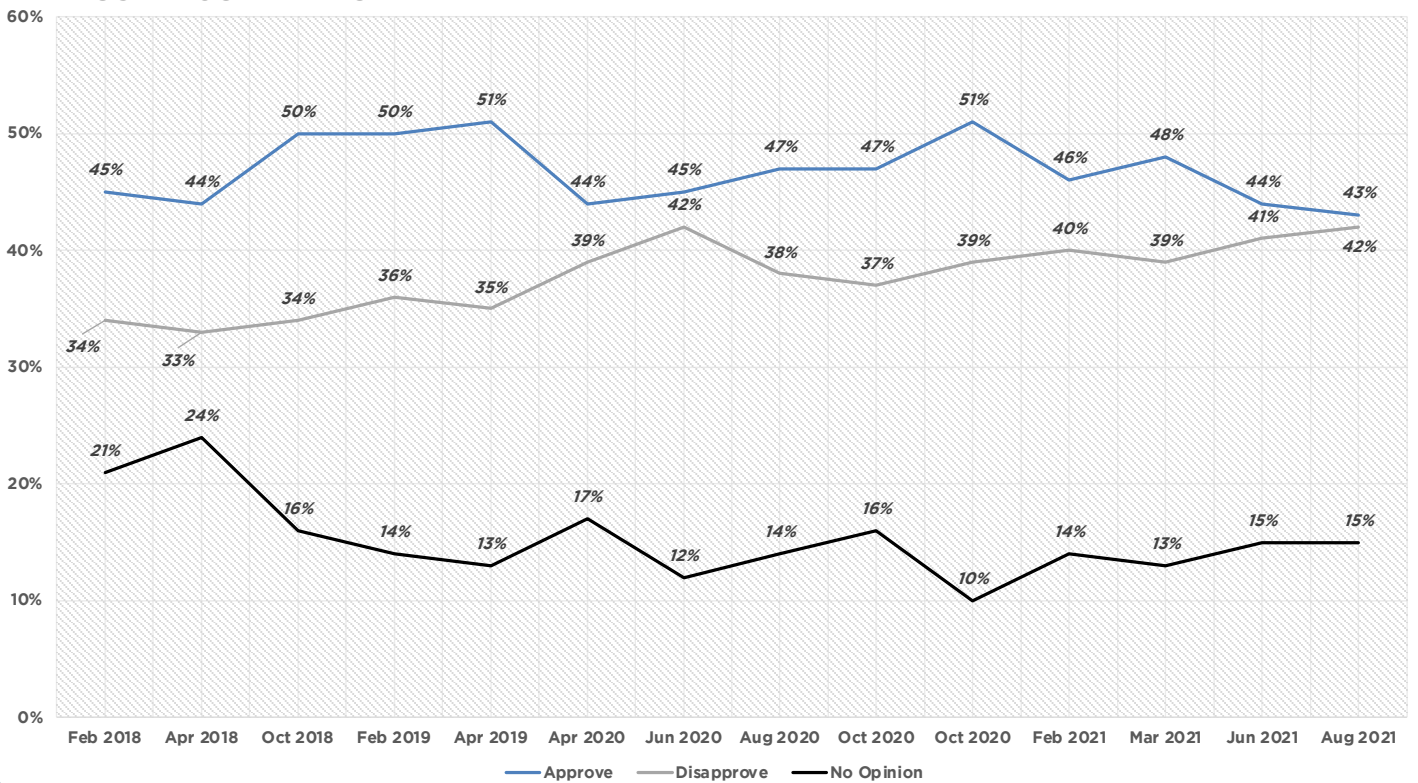
### HASSAN JOB APPROVAL



### PAPPAS JOB APPROVAL



### KUSTER JOB APPROVAL





# WEIGHTED MARGINALS

August 24-26, 2021

n = 1855

New Hampshire Registered Voters

MoE +/- 2.3%

Would you say that things in our country are heading in the right direction, or have things gotten off on the wrong track?			
		Frequency	Percent
	Right Track	513	28
	Wrong Track	1143	62
	Unsure	199	11
	Total	1855	100

If the election for Congress were held today, for which candidate would you likely vote?			
		Frequency	Percent
	Democratic	804	43
	Republican	862	46
	Other	48	3
	Unsure	142	8
	Total	1855	100

Biden Job Approval			
		Frequency	Percent
	Strongly Approve	409	22
	Somewhat Approve	410	22
	Somewhat Disapprove	118	6
	Strongly Disapprove	906	49
	No Opinion	6	0
	Never Heard Of	6	0
	Approve	819	44
	Disapprove	1024	55
	No Opinion	12	1
	Total	1855	100

<b>Sununu Job Approval</b>			
		<b>Frequency</b>	<b>Percent</b>
	<b>Strongly Approve</b>	<b>572</b>	<b>31</b>
	<b>Somewhat Approve</b>	<b>614</b>	<b>33</b>
	<b>Somewhat Disapprove</b>	<b>305</b>	<b>16</b>
	<b>Strongly Disapprove</b>	<b>328</b>	<b>18</b>
	<b>No Opinion</b>	<b>37</b>	<b>2</b>
	<b>Approve</b>	<b>1185</b>	<b>64</b>
	<b>Disapprove</b>	<b>633</b>	<b>34</b>
	<b>No Opinion</b>	<b>37</b>	<b>2</b>
	<b>Total</b>	<b>1855</b>	<b>100</b>

<b>Shaheen Job Approval</b>			
		<b>Frequency</b>	<b>Percent</b>
	<b>Strongly Approve</b>	<b>515</b>	<b>28</b>
	<b>Somewhat Approve</b>	<b>372</b>	<b>20</b>
	<b>Somewhat Disapprove</b>	<b>278</b>	<b>15</b>
	<b>Strongly Disapprove</b>	<b>570</b>	<b>31</b>
	<b>No Opinion</b>	<b>117</b>	<b>6</b>
	<b>Never Heard Of</b>	<b>3</b>	<b>0</b>
	<b>Approve</b>	<b>887</b>	<b>48</b>
	<b>Disapprove</b>	<b>848</b>	<b>46</b>
	<b>No Opinion</b>	<b>120</b>	<b>6</b>
	<b>Total</b>	<b>1855</b>	<b>100</b>

<b>Hassan Job Approval</b>			
		<b>Frequency</b>	<b>Percent</b>
	<b>Strongly Approve</b>	<b>422</b>	<b>23</b>
	<b>Somewhat Approve</b>	<b>398</b>	<b>21</b>
	<b>Somewhat Disapprove</b>	<b>249</b>	<b>13</b>
	<b>Strongly Disapprove</b>	<b>636</b>	<b>34</b>
	<b>No Opinion</b>	<b>140</b>	<b>8</b>
	<b>Never Heard Of</b>	<b>9</b>	<b>0</b>
	<b>Approve</b>	<b>820</b>	<b>44</b>
	<b>Disapprove</b>	<b>885</b>	<b>48</b>
	<b>No Opinion</b>	<b>149</b>	<b>8</b>
	<b>Total</b>	<b>1855</b>	<b>100</b>

<b>Pappas Job Approval</b>			
		<b>Frequency</b>	<b>Percent</b>
	<b>Strongly Approve</b>	<b>204</b>	<b>21</b>
	<b>Somewhat Approve</b>	<b>210</b>	<b>21</b>
	<b>Somewhat Disapprove</b>	<b>111</b>	<b>11</b>
	<b>Strongly Disapprove</b>	<b>307</b>	<b>31</b>
	<b>No Opinion</b>	<b>145</b>	<b>15</b>
	<b>Never Heard Of</b>	<b>13</b>	<b>1</b>
	<b>Approve</b>	<b>415</b>	<b>42</b>
	<b>Disapprove</b>	<b>418</b>	<b>42</b>
	<b>No Opinion</b>	<b>157</b>	<b>16</b>
	<b>Total</b>	<b>991</b>	<b>100</b>

<b>Kuster Job Approval</b>			
		<b>Frequency</b>	<b>Percent</b>
	<b>Strongly Approve</b>	<b>200</b>	<b>23</b>
	<b>Somewhat Approve</b>	<b>174</b>	<b>20</b>
	<b>Somewhat Disapprove</b>	<b>92</b>	<b>11</b>
	<b>Strongly Disapprove</b>	<b>267</b>	<b>31</b>
	<b>No Opinion</b>	<b>118</b>	<b>14</b>
	<b>Never Heard Of</b>	<b>13</b>	<b>2</b>
	<b>Approve</b>	<b>374</b>	<b>43</b>
	<b>Disapprove</b>	<b>359</b>	<b>42</b>
	<b>No Opinion</b>	<b>132</b>	<b>15</b>
	<b>Total</b>	<b>864</b>	<b>100</b>

**Which of the below statements, even if not completely accurate, comes closest to your thoughts about the withdrawal of United States troops from Afghanistan?**

**"The US should have stayed indefinitely to keep the region stable."**

**"It was about time to go, but more time and effort should've been taken to ensure Americans and allies could get to safety."**

**"The US withdrawal was long overdue."**

**"The US should never have been in Afghanistan in the first place."**

		<b>Frequency</b>	<b>Percent</b>
	<b>Stay Indefinitely</b>	<b>168</b>	<b>9</b>
	<b>Ensure Safety</b>	<b>1074</b>	<b>58</b>
	<b>Overdue</b>	<b>261</b>	<b>14</b>
	<b>Shouldn't Have Been There</b>	<b>353</b>	<b>19</b>
	<b>Total</b>	<b>1855</b>	<b>100</b>

**In your view, who bears the most responsibility for the current situation in Afghanistan?**

		Frequency	Percent
	<b>Bush</b>	509	27
	<b>Obama</b>	72	4
	<b>Trump</b>	248	13
	<b>Biden</b>	820	44
	<b>Unsure</b>	207	11
	<b>Total</b>	1855	100

**There are an estimated 50,000 - 80,000 Afghans that are known to have assisted United States efforts in Afghanistan who now face persecution by the Taliban. In your view, should these potential refugees be allowed to resettle in the United States?**

		Frequency	Percent
	<b>All</b>	692	37
	<b>Some</b>	1010	54
	<b>None</b>	153	8
	<b>Total</b>	1855	100

**Does President Biden's handling of the Afghan crisis impact your views on next year's elections?**

		Frequency	Percent
	<b>Inclined More Democratic</b>	257	14
	<b>Inclined More Republican</b>	800	43
	<b>No Difference</b>	798	43
	<b>Total</b>	1855	100

<b>Would you support or oppose a New Hampshire vaccination mandate?</b>			
		<b>Frequency</b>	<b>Percent</b>
	<b>Strongly Support</b>	719	39
	<b>Somewhat Support</b>	217	12
	<b>Somewhat Oppose</b>	148	8
	<b>Strongly Oppose</b>	716	39
	<b>Unsure</b>	54	3
	<b>Support</b>	936	50
	<b>Oppose</b>	865	47
	<b>Unsure</b>	54	3
	<b>Total</b>	1855	100

<b>Do you plan to get a COVID booster shot when available?</b>			
		<b>Frequency</b>	<b>Percent</b>
	<b>ASAP</b>	967	52
	<b>When Convenient</b>	209	11
	<b>No</b>	506	27
	<b>No Answer</b>	172	9
	<b>Total</b>	1855	100

<b>If the election for US Senate were today, and the candidates were Maggie Hassan and Chris Sununu, for whom would you vote?</b>			
		<b>Frequency</b>	<b>Percent</b>
	<b>Hassan</b>	752	41
	<b>Sununu</b>	915	49
	<b>Someone Else</b>	115	6
	<b>Unsure</b>	74	4
	<b>Total</b>	1855	100

# WEIGHTED TABLES

August 24-26, 2021

n = 1855

New Hampshire Registered Voters

MoE +/- 2.3%

Would you say that things in our country are heading in the right direction, or have things gotten off on the wrong track?				
		Right Track	Wrong Track	Unsure
Gender	Female	31%	55%	14%
	Male	24%	69%	7%
Age	18-34	23%	64%	12%
	35-54	22%	68%	10%
	55-64	29%	61%	9%
	65+	35%	53%	12%
Education	High School or Less	21%	74%	5%
	Some College/Associates Degree	23%	66%	12%
	College Graduate	31%	59%	10%
	Graduate/Professional School	36%	49%	15%
Ideology	Very Conservative	1%	99%	0%
	Somewhat Conservative	7%	90%	3%
	Moderate	15%	75%	10%
	Somewhat Liberal	58%	24%	19%
	Very Liberal	53%	26%	21%
Party Registration	Democratic	57%	26%	17%
	Republican	2%	97%	1%
	Undeclared	23%	63%	13%
Party Identification	Democratic	54%	26%	20%
	Republican	2%	97%	1%
	Swing	14%	79%	7%
Congressional District	CD-1	28%	63%	10%
	CD-2	28%	61%	12%
Region	North Country/Lakes	27%	68%	4%
	Monadnock/Dartmouth	21%	69%	10%
	Merrimack Valley	30%	59%	11%
	Seacoast/Border	27%	61%	12%
Total		28%	62%	11%

<b>If the election for Congress were held today, for which candidate would you likely vote?</b>					
		<b>Democratic</b>	<b>Republican</b>	<b>Other</b>	<b>Unsure</b>
<b>Gender</b>	<b>Female</b>	<b>51%</b>	<b>41%</b>	<b>1%</b>	<b>7%</b>
	<b>Male</b>	<b>36%</b>	<b>53%</b>	<b>4%</b>	<b>8%</b>
<b>Age</b>	<b>18-34</b>	<b>47%</b>	<b>39%</b>	<b>6%</b>	<b>9%</b>
	<b>35-54</b>	<b>39%</b>	<b>50%</b>	<b>3%</b>	<b>8%</b>
	<b>55-64</b>	<b>40%</b>	<b>50%</b>	<b>2%</b>	<b>8%</b>
	<b>65+</b>	<b>50%</b>	<b>42%</b>	<b>1%</b>	<b>7%</b>
<b>Education</b>	<b>High School or Less</b>	<b>30%</b>	<b>60%</b>	<b>3%</b>	<b>7%</b>
	<b>Some College/Associates Degree</b>	<b>38%</b>	<b>53%</b>	<b>2%</b>	<b>6%</b>
	<b>College Graduate</b>	<b>47%</b>	<b>42%</b>	<b>3%</b>	<b>8%</b>
	<b>Graduate/Professional School</b>	<b>57%</b>	<b>31%</b>	<b>3%</b>	<b>9%</b>
<b>Ideology</b>	<b>Very Conservative</b>	<b>0%</b>	<b>96%</b>	<b>2%</b>	<b>1%</b>
	<b>Somewhat Conservative</b>	<b>9%</b>	<b>82%</b>	<b>1%</b>	<b>8%</b>
	<b>Moderate</b>	<b>31%</b>	<b>36%</b>	<b>11%</b>	<b>23%</b>
	<b>Somewhat Liberal</b>	<b>83%</b>	<b>8%</b>	<b>1%</b>	<b>8%</b>
	<b>Very Liberal</b>	<b>93%</b>	<b>4%</b>	<b>1%</b>	<b>1%</b>
<b>Party Registration</b>	<b>Democratic</b>	<b>86%</b>	<b>7%</b>	<b>2%</b>	<b>5%</b>
	<b>Republican</b>	<b>2%</b>	<b>92%</b>	<b>1%</b>	<b>4%</b>
	<b>Undeclared</b>	<b>40%</b>	<b>41%</b>	<b>5%</b>	<b>14%</b>
<b>Party Identification</b>	<b>Democratic</b>	<b>86%</b>	<b>6%</b>	<b>2%</b>	<b>7%</b>
	<b>Republican</b>	<b>2%</b>	<b>91%</b>	<b>1%</b>	<b>6%</b>
	<b>Swing</b>	<b>13%</b>	<b>40%</b>	<b>18%</b>	<b>29%</b>
<b>Congressional District</b>	<b>CD-1</b>	<b>43%</b>	<b>47%</b>	<b>2%</b>	<b>7%</b>
	<b>CD-2</b>	<b>43%</b>	<b>45%</b>	<b>3%</b>	<b>9%</b>
<b>Region</b>	<b>North Country/Lakes</b>	<b>34%</b>	<b>54%</b>	<b>3%</b>	<b>9%</b>
	<b>Monadnock/Dartmouth</b>	<b>33%</b>	<b>54%</b>	<b>5%</b>	<b>8%</b>
	<b>Merrimack Valley</b>	<b>47%</b>	<b>44%</b>	<b>1%</b>	<b>9%</b>
	<b>Seacoast/Border</b>	<b>45%</b>	<b>45%</b>	<b>3%</b>	<b>6%</b>
<b>Total</b>		<b>43%</b>	<b>46%</b>	<b>3%</b>	<b>8%</b>



<b>Biden Job Approval</b>				
		<b>Approve</b>	<b>Disapprove</b>	<b>No Opinion</b>
<b>Gender</b>	<b>Female</b>	<b>52%</b>	<b>47%</b>	<b>1%</b>
	<b>Male</b>	<b>35%</b>	<b>64%</b>	<b>1%</b>
<b>Age</b>	<b>18-34</b>	<b>42%</b>	<b>56%</b>	<b>2%</b>
	<b>35-54</b>	<b>39%</b>	<b>61%</b>	<b>0%</b>
	<b>55-64</b>	<b>43%</b>	<b>57%</b>	<b>0%</b>
	<b>65+</b>	<b>53%</b>	<b>46%</b>	<b>0%</b>
<b>Education</b>	<b>High School or Less</b>	<b>29%</b>	<b>71%</b>	
	<b>Some College/Associates Degree</b>	<b>37%</b>	<b>62%</b>	<b>1%</b>
	<b>College Graduate</b>	<b>49%</b>	<b>50%</b>	<b>1%</b>
	<b>Graduate/Professional School</b>	<b>61%</b>	<b>39%</b>	<b>0%</b>
<b>Ideology</b>	<b>Very Conservative</b>	<b>2%</b>	<b>98%</b>	<b>0%</b>
	<b>Somewhat Conservative</b>	<b>12%</b>	<b>88%</b>	<b>0%</b>
	<b>Moderate</b>	<b>33%</b>	<b>66%</b>	<b>1%</b>
	<b>Somewhat Liberal</b>	<b>85%</b>	<b>14%</b>	<b>1%</b>
	<b>Very Liberal</b>	<b>87%</b>	<b>12%</b>	<b>2%</b>
<b>Party Registration</b>	<b>Democratic</b>	<b>86%</b>	<b>13%</b>	<b>1%</b>
	<b>Republican</b>	<b>3%</b>	<b>97%</b>	<b>0%</b>
	<b>Undeclared</b>	<b>42%</b>	<b>57%</b>	<b>1%</b>
<b>Party Identification</b>	<b>Democratic</b>	<b>85%</b>	<b>14%</b>	<b>1%</b>
	<b>Republican</b>	<b>3%</b>	<b>96%</b>	<b>0%</b>
	<b>Swing</b>	<b>25%</b>	<b>75%</b>	<b>1%</b>
<b>Congressional District</b>	<b>CD-1</b>	<b>44%</b>	<b>55%</b>	<b>1%</b>
	<b>CD-2</b>	<b>45%</b>	<b>55%</b>	<b>0%</b>
<b>Region</b>	<b>North Country/Lakes</b>	<b>33%</b>	<b>67%</b>	<b>1%</b>
	<b>Monadnock/Dartmouth</b>	<b>35%</b>	<b>65%</b>	
	<b>Merrimack Valley</b>	<b>47%</b>	<b>52%</b>	<b>1%</b>
	<b>Seacoast/Border</b>	<b>46%</b>	<b>53%</b>	<b>1%</b>
<b>Total</b>		<b>44%</b>	<b>55%</b>	<b>1%</b>

<b>Biden Job Approval</b>							
		<b>Strongly Approve</b>	<b>Somewhat Approve</b>	<b>Somewhat Disapprove</b>	<b>Strongly Disapprove</b>	<b>No Opinion</b>	<b>Never Heard Of</b>
<b>Gender</b>	<b>Female</b>	<b>26%</b>	<b>26%</b>	<b>6%</b>	<b>42%</b>	<b>0%</b>	<b>1%</b>
	<b>Male</b>	<b>18%</b>	<b>18%</b>	<b>7%</b>	<b>57%</b>	<b>1%</b>	<b>0%</b>
<b>Age</b>	<b>18-34</b>	<b>9%</b>	<b>33%</b>	<b>10%</b>	<b>46%</b>	<b>1%</b>	<b>2%</b>
	<b>35-54</b>	<b>17%</b>	<b>22%</b>	<b>7%</b>	<b>53%</b>	<b>0%</b>	
	<b>55-64</b>	<b>24%</b>	<b>18%</b>	<b>6%</b>	<b>51%</b>	<b>0%</b>	
	<b>65+</b>	<b>33%</b>	<b>20%</b>	<b>3%</b>	<b>43%</b>	<b>0%</b>	<b>0%</b>
<b>Education</b>	<b>High School or Less</b>	<b>14%</b>	<b>15%</b>	<b>7%</b>	<b>65%</b>		
	<b>Some College/Associates Degree</b>	<b>18%</b>	<b>19%</b>	<b>6%</b>	<b>56%</b>	<b>1%</b>	<b>1%</b>
	<b>College Graduate</b>	<b>25%</b>	<b>23%</b>	<b>7%</b>	<b>43%</b>	<b>0%</b>	<b>0%</b>
	<b>Graduate/Professional School</b>	<b>30%</b>	<b>30%</b>	<b>6%</b>	<b>33%</b>	<b>0%</b>	
<b>Ideology</b>	<b>Very Conservative</b>	<b>1%</b>	<b>1%</b>	<b>1%</b>	<b>97%</b>		<b>0%</b>
	<b>Somewhat Conservative</b>	<b>6%</b>	<b>6%</b>	<b>7%</b>	<b>81%</b>	<b>0%</b>	
	<b>Moderate</b>	<b>14%</b>	<b>19%</b>	<b>13%</b>	<b>54%</b>	<b>1%</b>	
	<b>Somewhat Liberal</b>	<b>43%</b>	<b>42%</b>	<b>6%</b>	<b>9%</b>	<b>1%</b>	
	<b>Very Liberal</b>	<b>44%</b>	<b>43%</b>	<b>6%</b>	<b>6%</b>		<b>2%</b>
<b>Party Registration</b>	<b>Democratic</b>	<b>46%</b>	<b>39%</b>	<b>5%</b>	<b>8%</b>	<b>0%</b>	<b>1%</b>
	<b>Republican</b>	<b>2%</b>	<b>2%</b>	<b>3%</b>	<b>94%</b>		<b>0%</b>
	<b>Undeclared</b>	<b>17%</b>	<b>25%</b>	<b>11%</b>	<b>47%</b>	<b>1%</b>	
<b>Party Identification</b>	<b>Democratic</b>	<b>43%</b>	<b>42%</b>	<b>8%</b>	<b>6%</b>	<b>0%</b>	<b>1%</b>
	<b>Republican</b>	<b>1%</b>	<b>2%</b>	<b>4%</b>	<b>92%</b>	<b>0%</b>	<b>0%</b>
	<b>Swing</b>	<b>8%</b>	<b>17%</b>	<b>11%</b>	<b>63%</b>	<b>1%</b>	
<b>Congressional District</b>	<b>CD-1</b>	<b>22%</b>	<b>21%</b>	<b>6%</b>	<b>50%</b>	<b>1%</b>	<b>0%</b>
	<b>CD-2</b>	<b>22%</b>	<b>23%</b>	<b>7%</b>	<b>48%</b>		<b>0%</b>
<b>Region</b>	<b>North Country/Lakes</b>	<b>16%</b>	<b>17%</b>	<b>9%</b>	<b>58%</b>	<b>1%</b>	
	<b>Monadnock/Dartmouth</b>	<b>19%</b>	<b>16%</b>	<b>2%</b>	<b>63%</b>		
	<b>Merrimack Valley</b>	<b>25%</b>	<b>23%</b>	<b>8%</b>	<b>43%</b>	<b>0%</b>	<b>1%</b>
	<b>Seacoast/Border</b>	<b>22%</b>	<b>25%</b>	<b>5%</b>	<b>48%</b>	<b>1%</b>	<b>0%</b>
<b>Total</b>		<b>22%</b>	<b>22%</b>	<b>6%</b>	<b>49%</b>	<b>0%</b>	<b>0%</b>

<b>Sununu Job Approval</b>				
		<b>Approve</b>	<b>Disapprove</b>	<b>No Opinion</b>
<b>Gender</b>	<b>Female</b>	<b>62%</b>	<b>36%</b>	<b>2%</b>
	<b>Male</b>	<b>66%</b>	<b>32%</b>	<b>2%</b>
<b>Age</b>	<b>18-34</b>	<b>52%</b>	<b>46%</b>	<b>2%</b>
	<b>35-54</b>	<b>63%</b>	<b>35%</b>	<b>1%</b>
	<b>55-64</b>	<b>68%</b>	<b>29%</b>	<b>3%</b>
	<b>65+</b>	<b>68%</b>	<b>31%</b>	<b>2%</b>
<b>Education</b>	<b>High School or Less</b>	<b>69%</b>	<b>30%</b>	<b>2%</b>
	<b>Some College/Associates Degree</b>	<b>71%</b>	<b>26%</b>	<b>2%</b>
	<b>College Graduate</b>	<b>61%</b>	<b>37%</b>	<b>2%</b>
	<b>Graduate/Professional School</b>	<b>52%</b>	<b>46%</b>	<b>1%</b>
<b>Ideology</b>	<b>Very Conservative</b>	<b>92%</b>	<b>6%</b>	<b>2%</b>
	<b>Somewhat Conservative</b>	<b>90%</b>	<b>9%</b>	<b>1%</b>
	<b>Moderate</b>	<b>60%</b>	<b>35%</b>	<b>4%</b>
	<b>Somewhat Liberal</b>	<b>43%</b>	<b>54%</b>	<b>2%</b>
	<b>Very Liberal</b>	<b>25%</b>	<b>75%</b>	<b>0%</b>
<b>Party Registration</b>	<b>Democratic</b>	<b>35%</b>	<b>64%</b>	<b>1%</b>
	<b>Republican</b>	<b>92%</b>	<b>6%</b>	<b>1%</b>
	<b>Undeclared</b>	<b>66%</b>	<b>31%</b>	<b>4%</b>
<b>Party Identification</b>	<b>Democratic</b>	<b>37%</b>	<b>61%</b>	<b>1%</b>
	<b>Republican</b>	<b>91%</b>	<b>7%</b>	<b>2%</b>
	<b>Swing</b>	<b>73%</b>	<b>23%</b>	<b>3%</b>
<b>Congressional District</b>	<b>CD-1</b>	<b>64%</b>	<b>33%</b>	<b>2%</b>
	<b>CD-2</b>	<b>63%</b>	<b>35%</b>	<b>2%</b>
<b>Region</b>	<b>North Country/Lakes</b>	<b>71%</b>	<b>29%</b>	<b>1%</b>
	<b>Monadnock/Dartmouth</b>	<b>68%</b>	<b>32%</b>	<b>1%</b>
	<b>Merrimack Valley</b>	<b>64%</b>	<b>35%</b>	<b>2%</b>
	<b>Seacoast/Border</b>	<b>61%</b>	<b>35%</b>	<b>3%</b>
<b>Total</b>		<b>64%</b>	<b>34%</b>	<b>2%</b>

<b>Sununu Job Approval</b>						
		<b>Strongly Approve</b>	<b>Somewhat Approve</b>	<b>Somewhat Disapprove</b>	<b>Strongly Disapprove</b>	<b>No Opinion</b>
<b>Gender</b>	<b>Female</b>	<b>29%</b>	<b>32%</b>	<b>16%</b>	<b>20%</b>	<b>2%</b>
	<b>Male</b>	<b>32%</b>	<b>34%</b>	<b>16%</b>	<b>15%</b>	<b>2%</b>
<b>Age</b>	<b>18-34</b>	<b>23%</b>	<b>28%</b>	<b>17%</b>	<b>29%</b>	<b>2%</b>
	<b>35-54</b>	<b>29%</b>	<b>34%</b>	<b>15%</b>	<b>20%</b>	<b>1%</b>
	<b>55-64</b>	<b>32%</b>	<b>37%</b>	<b>17%</b>	<b>12%</b>	<b>3%</b>
	<b>65+</b>	<b>37%</b>	<b>31%</b>	<b>18%</b>	<b>13%</b>	<b>2%</b>
<b>Education</b>	<b>High School or Less</b>	<b>34%</b>	<b>35%</b>	<b>13%</b>	<b>17%</b>	<b>2%</b>
	<b>Some College/Associates Degree</b>	<b>37%</b>	<b>35%</b>	<b>13%</b>	<b>13%</b>	<b>2%</b>
	<b>College Graduate</b>	<b>29%</b>	<b>32%</b>	<b>19%</b>	<b>17%</b>	<b>2%</b>
	<b>Graduate/Professional School</b>	<b>22%</b>	<b>30%</b>	<b>21%</b>	<b>25%</b>	<b>1%</b>
<b>Ideology</b>	<b>Very Conservative</b>	<b>50%</b>	<b>42%</b>	<b>2%</b>	<b>3%</b>	<b>2%</b>
	<b>Somewhat Conservative</b>	<b>52%</b>	<b>38%</b>	<b>6%</b>	<b>2%</b>	<b>1%</b>
	<b>Moderate</b>	<b>30%</b>	<b>30%</b>	<b>16%</b>	<b>19%</b>	<b>4%</b>
	<b>Somewhat Liberal</b>	<b>11%</b>	<b>32%</b>	<b>32%</b>	<b>22%</b>	<b>2%</b>
	<b>Very Liberal</b>	<b>5%</b>	<b>20%</b>	<b>23%</b>	<b>52%</b>	<b>0%</b>
<b>Party Registration</b>	<b>Democratic</b>	<b>9%</b>	<b>26%</b>	<b>28%</b>	<b>36%</b>	<b>1%</b>
	<b>Republican</b>	<b>54%</b>	<b>38%</b>	<b>3%</b>	<b>3%</b>	<b>1%</b>
	<b>Undeclared</b>	<b>30%</b>	<b>36%</b>	<b>18%</b>	<b>13%</b>	<b>4%</b>
<b>Party Identification</b>	<b>Democratic</b>	<b>9%</b>	<b>28%</b>	<b>29%</b>	<b>32%</b>	<b>1%</b>
	<b>Republican</b>	<b>53%</b>	<b>38%</b>	<b>4%</b>	<b>3%</b>	<b>2%</b>
	<b>Swing</b>	<b>32%</b>	<b>41%</b>	<b>10%</b>	<b>14%</b>	<b>4%</b>
<b>Congressional District</b>	<b>CD-1</b>	<b>30%</b>	<b>34%</b>	<b>16%</b>	<b>17%</b>	<b>2%</b>
	<b>CD-2</b>	<b>32%</b>	<b>32%</b>	<b>17%</b>	<b>18%</b>	<b>2%</b>
<b>Region</b>	<b>North Country/Lakes</b>	<b>35%</b>	<b>36%</b>	<b>17%</b>	<b>11%</b>	<b>0%</b>
	<b>Monadnock/Dartmouth</b>	<b>36%</b>	<b>31%</b>	<b>16%</b>	<b>16%</b>	<b>1%</b>
	<b>Merrimack Valley</b>	<b>30%</b>	<b>33%</b>	<b>17%</b>	<b>18%</b>	<b>2%</b>
	<b>Seacoast/Border</b>	<b>29%</b>	<b>33%</b>	<b>16%</b>	<b>19%</b>	<b>3%</b>
<b>Total</b>		<b>31%</b>	<b>33%</b>	<b>16%</b>	<b>18%</b>	<b>2%</b>

<b>Shaheen Job Approval</b>				
		<b>Approve</b>	<b>Disapprove</b>	<b>No Opinion</b>
<b>Gender</b>	<b>Female</b>	<b>54%</b>	<b>38%</b>	<b>8%</b>
	<b>Male</b>	<b>41%</b>	<b>54%</b>	<b>5%</b>
<b>Age</b>	<b>18-34</b>	<b>43%</b>	<b>47%</b>	<b>10%</b>
	<b>35-54</b>	<b>43%</b>	<b>50%</b>	<b>7%</b>
	<b>55-64</b>	<b>48%</b>	<b>45%</b>	<b>7%</b>
	<b>65+</b>	<b>57%</b>	<b>39%</b>	<b>4%</b>
<b>Education</b>	<b>High School or Less</b>	<b>37%</b>	<b>57%</b>	<b>5%</b>
	<b>Some College/Associates Degree</b>	<b>43%</b>	<b>50%</b>	<b>7%</b>
	<b>College Graduate</b>	<b>49%</b>	<b>44%</b>	<b>7%</b>
	<b>Graduate/Professional School</b>	<b>62%</b>	<b>32%</b>	<b>6%</b>
<b>Ideology</b>	<b>Very Conservative</b>	<b>10%</b>	<b>86%</b>	<b>5%</b>
	<b>Somewhat Conservative</b>	<b>21%</b>	<b>71%</b>	<b>8%</b>
	<b>Moderate</b>	<b>32%</b>	<b>54%</b>	<b>14%</b>
	<b>Somewhat Liberal</b>	<b>84%</b>	<b>11%</b>	<b>5%</b>
	<b>Very Liberal</b>	<b>87%</b>	<b>11%</b>	<b>2%</b>
<b>Party Registration</b>	<b>Democratic</b>	<b>86%</b>	<b>11%</b>	<b>3%</b>
	<b>Republican</b>	<b>11%</b>	<b>83%</b>	<b>6%</b>
	<b>Undeclared</b>	<b>45%</b>	<b>44%</b>	<b>10%</b>
<b>Party Identification</b>	<b>Democratic</b>	<b>84%</b>	<b>12%</b>	<b>5%</b>
	<b>Republican</b>	<b>12%</b>	<b>80%</b>	<b>8%</b>
	<b>Swing</b>	<b>32%</b>	<b>57%</b>	<b>10%</b>
<b>Congressional District</b>	<b>CD-1</b>	<b>47%</b>	<b>47%</b>	<b>6%</b>
	<b>CD-2</b>	<b>49%</b>	<b>44%</b>	<b>6%</b>
<b>Region</b>	<b>North Country/Lakes</b>	<b>43%</b>	<b>53%</b>	<b>5%</b>
	<b>Monadnock/Dartmouth</b>	<b>41%</b>	<b>56%</b>	<b>3%</b>
	<b>Merrimack Valley</b>	<b>52%</b>	<b>40%</b>	<b>7%</b>
	<b>Seacoast/Border</b>	<b>47%</b>	<b>46%</b>	<b>7%</b>
<b>Total</b>		<b>48%</b>	<b>46%</b>	<b>6%</b>

Shaheen Job Approval							
		Strongly Approve	Somewhat Approve	Somewhat Disapprove	Strongly Disapprove	No Opinion	Never Heard Of
Gender	Female	34%	20%	14%	23%	8%	0%
	Male	21%	20%	16%	39%	5%	
Age	18-34	18%	25%	15%	32%	10%	0%
	35-54	18%	25%	17%	33%	6%	0%
	55-64	32%	16%	15%	31%	7%	
	65+	41%	16%	12%	28%	4%	
Education	High School or Less	18%	19%	15%	43%	5%	
	Some College/Associates Degree	23%	20%	17%	33%	7%	
	College Graduate	30%	20%	16%	28%	6%	0%
	Graduate/Professional School	41%	20%	10%	22%	5%	0%
Ideology	Very Conservative	2%	8%	17%	68%	5%	
	Somewhat Conservative	7%	14%	25%	46%	7%	0%
	Moderate	13%	19%	19%	35%	13%	1%
	Somewhat Liberal	57%	27%	7%	4%	5%	
	Very Liberal	53%	33%	3%	8%	2%	
Party Registration	Democratic	58%	28%	5%	6%	3%	
	Republican	2%	8%	22%	61%	6%	
	Undeclared	22%	24%	17%	27%	10%	0%
Party Identification	Democratic	54%	30%	6%	5%	5%	
	Republican	2%	10%	24%	56%	8%	0%
	Swing	12%	21%	18%	39%	9%	2%
Congressional District	CD-1	28%	19%	16%	31%	6%	0%
	CD-2	28%	21%	14%	30%	6%	0%
Region	North Country/Lakes	25%	17%	17%	36%	5%	
	Monadnock/Dartmouth	22%	19%	18%	38%	3%	
	Merrimack Valley	30%	22%	14%	27%	7%	0%
	Seacoast/Border	28%	19%	15%	32%	7%	0%
Total		28%	20%	15%	31%	6%	0%

<b>Hassan Job Approval</b>				
		<b>Approve</b>	<b>Disapprove</b>	<b>No Opinion</b>
<b>Gender</b>	<b>Female</b>	<b>51%</b>	<b>39%</b>	<b>10%</b>
	<b>Male</b>	<b>37%</b>	<b>58%</b>	<b>6%</b>
<b>Age</b>	<b>18-34</b>	<b>38%</b>	<b>50%</b>	<b>11%</b>
	<b>35-54</b>	<b>38%</b>	<b>52%</b>	<b>9%</b>
	<b>55-64</b>	<b>46%</b>	<b>47%</b>	<b>7%</b>
	<b>65+</b>	<b>54%</b>	<b>41%</b>	<b>6%</b>
<b>Education</b>	<b>High School or Less</b>	<b>36%</b>	<b>55%</b>	<b>8%</b>
	<b>Some College/Associates Degree</b>	<b>39%</b>	<b>54%</b>	<b>8%</b>
	<b>College Graduate</b>	<b>44%</b>	<b>47%</b>	<b>9%</b>
	<b>Graduate/Professional School</b>	<b>59%</b>	<b>34%</b>	<b>7%</b>
<b>Ideology</b>	<b>Very Conservative</b>	<b>6%</b>	<b>86%</b>	<b>9%</b>
	<b>Somewhat Conservative</b>	<b>16%</b>	<b>75%</b>	<b>9%</b>
	<b>Moderate</b>	<b>32%</b>	<b>54%</b>	<b>14%</b>
	<b>Somewhat Liberal</b>	<b>82%</b>	<b>13%</b>	<b>6%</b>
	<b>Very Liberal</b>	<b>81%</b>	<b>13%</b>	<b>6%</b>
<b>Party Registration</b>	<b>Democratic</b>	<b>82%</b>	<b>13%</b>	<b>5%</b>
	<b>Republican</b>	<b>6%</b>	<b>85%</b>	<b>9%</b>
	<b>Undeclared</b>	<b>43%</b>	<b>47%</b>	<b>11%</b>
<b>Party Identification</b>	<b>Democratic</b>	<b>81%</b>	<b>13%</b>	<b>6%</b>
	<b>Republican</b>	<b>8%</b>	<b>82%</b>	<b>10%</b>
	<b>Swing</b>	<b>26%</b>	<b>60%</b>	<b>14%</b>
<b>Congressional District</b>	<b>CD-1</b>	<b>44%</b>	<b>49%</b>	<b>7%</b>
	<b>CD-2</b>	<b>45%</b>	<b>46%</b>	<b>9%</b>
<b>Region</b>	<b>North Country/Lakes</b>	<b>37%</b>	<b>56%</b>	<b>8%</b>
	<b>Monadnock/Dartmouth</b>	<b>34%</b>	<b>59%</b>	<b>7%</b>
	<b>Merrimack Valley</b>	<b>48%</b>	<b>44%</b>	<b>8%</b>
	<b>Seacoast/Border</b>	<b>45%</b>	<b>47%</b>	<b>9%</b>
<b>Total</b>		<b>44%</b>	<b>48%</b>	<b>8%</b>

Hassan Job Approval							
		Strongly Approve	Somewhat Approve	Somewhat Disapprove	Strongly Disapprove	No Opinion	Never Heard Of
Gender	Female	27%	24%	11%	28%	10%	1%
	Male	18%	19%	16%	41%	5%	0%
Age	18-34	12%	27%	12%	38%	10%	1%
	35-54	15%	23%	18%	34%	8%	1%
	55-64	24%	21%	11%	36%	7%	0%
	65+	37%	17%	11%	30%	6%	0%
Education	High School or Less	14%	22%	11%	45%	8%	0%
	Some College/Associates Degree	17%	21%	17%	37%	7%	0%
	College Graduate	24%	20%	16%	31%	8%	1%
	Graduate/Professional School	36%	23%	7%	26%	7%	0%
Ideology	Very Conservative	0%	5%	13%	73%	8%	0%
	Somewhat Conservative	6%	10%	24%	51%	8%	1%
	Moderate	9%	23%	14%	40%	13%	1%
	Somewhat Liberal	47%	34%	7%	6%	5%	0%
	Very Liberal	46%	35%	5%	9%	5%	0%
Party Registration	Democratic	49%	34%	4%	8%	4%	0%
	Republican	1%	5%	19%	66%	8%	0%
	Undeclared	17%	25%	17%	30%	10%	1%
Party Identification	Democratic	45%	36%	6%	7%	6%	0%
	Republican	1%	7%	21%	61%	9%	1%
	Swing	8%	18%	14%	45%	13%	2%
Congressional District	CD-1	23%	21%	14%	35%	7%	0%
	CD-2	23%	22%	13%	34%	8%	1%
Region	North Country/Lakes	21%	17%	15%	40%	7%	1%
	Monadnock/Dartmouth	17%	17%	11%	47%	7%	
	Merrimack Valley	26%	22%	14%	30%	7%	1%
	Seacoast/Border	22%	23%	13%	34%	8%	0%
Total		23%	21%	13%	34%	8%	0%



<b>Pappas Job Approval</b>				
		<b>Approve</b>	<b>Disapprove</b>	<b>No Opinion</b>
<b>Gender</b>	<b>Female</b>	<b>49%</b>	<b>33%</b>	<b>18%</b>
	<b>Male</b>	<b>34%</b>	<b>52%</b>	<b>13%</b>
<b>Age</b>	<b>18-34</b>	<b>33%</b>	<b>45%</b>	<b>22%</b>
	<b>35-54</b>	<b>42%</b>	<b>40%</b>	<b>18%</b>
	<b>55-64</b>	<b>40%</b>	<b>45%</b>	<b>16%</b>
	<b>65+</b>	<b>49%</b>	<b>41%</b>	<b>10%</b>
<b>Education</b>	<b>High School or Less</b>	<b>30%</b>	<b>49%</b>	<b>21%</b>
	<b>Some College/Associates Degree</b>	<b>36%</b>	<b>49%</b>	<b>15%</b>
	<b>College Graduate</b>	<b>44%</b>	<b>39%</b>	<b>17%</b>
	<b>Graduate/Professional School</b>	<b>58%</b>	<b>30%</b>	<b>12%</b>
<b>Ideology</b>	<b>Very Conservative</b>	<b>8%</b>	<b>82%</b>	<b>10%</b>
	<b>Somewhat Conservative</b>	<b>18%</b>	<b>64%</b>	<b>18%</b>
	<b>Moderate</b>	<b>34%</b>	<b>43%</b>	<b>23%</b>
	<b>Somewhat Liberal</b>	<b>72%</b>	<b>11%</b>	<b>17%</b>
	<b>Very Liberal</b>	<b>77%</b>	<b>13%</b>	<b>10%</b>
<b>Party Registration</b>	<b>Democratic</b>	<b>77%</b>	<b>13%</b>	<b>10%</b>
	<b>Republican</b>	<b>11%</b>	<b>73%</b>	<b>15%</b>
	<b>Undeclared</b>	<b>38%</b>	<b>40%</b>	<b>22%</b>
<b>Party Identification</b>	<b>Democratic</b>	<b>73%</b>	<b>13%</b>	<b>14%</b>
	<b>Republican</b>	<b>13%</b>	<b>71%</b>	<b>16%</b>
	<b>Swing</b>	<b>32%</b>	<b>42%</b>	<b>26%</b>
<b>Region</b>	<b>North Country/Lakes</b>	<b>38%</b>	<b>39%</b>	<b>23%</b>
	<b>Monadnock/Dartmouth</b>	<b>11%</b>	<b>11%</b>	<b>78%</b>
	<b>Merrimack Valley</b>	<b>46%</b>	<b>41%</b>	<b>13%</b>
	<b>Seacoast/Border</b>	<b>42%</b>	<b>44%</b>	<b>15%</b>
<b>Total</b>		<b>42%</b>	<b>42%</b>	<b>16%</b>

Pappas Job Approval							
		Strongly Approve	Somewhat Approve	Somewhat Disapprove	Strongly Disapprove	No Opinion	Never Heard Of
Gender	Female	24%	25%	9%	24%	17%	1%
	Male	17%	17%	13%	39%	12%	1%
Age	18-34	16%	16%	16%	29%	19%	3%
	35-54	17%	25%	12%	29%	17%	1%
	55-64	19%	21%	10%	35%	14%	1%
	65+	29%	20%	9%	32%	10%	0%
Education	High School or Less	14%	16%	7%	41%	20%	1%
	Some College/Associates Degree	17%	19%	13%	35%	14%	2%
	College Graduate	23%	21%	13%	27%	15%	2%
	Graduate/Professional School	29%	29%	9%	22%	11%	0%
Ideology	Very Conservative	1%	7%	16%	66%	8%	1%
	Somewhat Conservative	5%	14%	19%	46%	17%	1%
	Moderate	8%	26%	4%	39%	22%	2%
	Somewhat Liberal	41%	31%	7%	4%	15%	2%
	Very Liberal	46%	31%	4%	9%	10%	
Party Registration	Democratic	46%	31%	4%	8%	10%	1%
	Republican	3%	8%	16%	57%	15%	1%
	Undeclared	12%	26%	13%	27%	20%	2%
Party Identification	Democratic	41%	32%	6%	7%	13%	1%
	Republican	3%	10%	17%	54%	15%	1%
	Swing	9%	23%	7%	35%	23%	4%
Region	North Country/Lakes	19%	19%	10%	30%	19%	3%
	Monadnock/Dartmouth	11%			11%	78%	
	Merrimack Valley	24%	22%	12%	30%	12%	0%
	Seacoast/Border	19%	22%	11%	33%	13%	1%
Total		21%	21%	11%	31%	15%	1%

<b>Kuster Job Approval</b>				
		<b>Approve</b>	<b>Disapprove</b>	<b>No Opinion</b>
<b>Gender</b>	<b>Female</b>	<b>47%</b>	<b>34%</b>	<b>19%</b>
	<b>Male</b>	<b>40%</b>	<b>50%</b>	<b>11%</b>
<b>Age</b>	<b>18-34</b>	<b>41%</b>	<b>38%</b>	<b>21%</b>
	<b>35-54</b>	<b>38%</b>	<b>46%</b>	<b>16%</b>
	<b>55-64</b>	<b>41%</b>	<b>46%</b>	<b>13%</b>
	<b>65+</b>	<b>56%</b>	<b>31%</b>	<b>12%</b>
<b>Education</b>	<b>High School or Less</b>	<b>25%</b>	<b>52%</b>	<b>23%</b>
	<b>Some College/Associates Degree</b>	<b>41%</b>	<b>46%</b>	<b>12%</b>
	<b>College Graduate</b>	<b>46%</b>	<b>38%</b>	<b>16%</b>
	<b>Graduate/Professional School</b>	<b>55%</b>	<b>30%</b>	<b>14%</b>
<b>Ideology</b>	<b>Very Conservative</b>	<b>7%</b>	<b>80%</b>	<b>13%</b>
	<b>Somewhat Conservative</b>	<b>14%</b>	<b>69%</b>	<b>17%</b>
	<b>Moderate</b>	<b>31%</b>	<b>44%</b>	<b>25%</b>
	<b>Somewhat Liberal</b>	<b>78%</b>	<b>11%</b>	<b>12%</b>
	<b>Very Liberal</b>	<b>83%</b>	<b>7%</b>	<b>10%</b>
<b>Party Registration</b>	<b>Democratic</b>	<b>80%</b>	<b>9%</b>	<b>11%</b>
	<b>Republican</b>	<b>7%</b>	<b>77%</b>	<b>15%</b>
	<b>Undeclared</b>	<b>39%</b>	<b>42%</b>	<b>20%</b>
<b>Party Identification</b>	<b>Democratic</b>	<b>78%</b>	<b>9%</b>	<b>13%</b>
	<b>Republican</b>	<b>7%</b>	<b>76%</b>	<b>17%</b>
	<b>Swing</b>	<b>19%</b>	<b>63%</b>	<b>18%</b>
<b>Region</b>	<b>North Country/Lakes</b>	<b>29%</b>	<b>48%</b>	<b>24%</b>
	<b>Monadnock/Dartmouth</b>	<b>32%</b>	<b>58%</b>	<b>10%</b>
	<b>Merrimack Valley</b>	<b>46%</b>	<b>37%</b>	<b>17%</b>
	<b>Seacoast/Border</b>	<b>51%</b>	<b>36%</b>	<b>14%</b>
<b>Total</b>		<b>43%</b>	<b>42%</b>	<b>15%</b>

<b>Kuster Job Approval</b>							
		<b>Strongly Approve</b>	<b>Somewhat Approve</b>	<b>Somewhat Disapprove</b>	<b>Strongly Disapprove</b>	<b>No Opinion</b>	<b>Never Heard Of</b>
<b>Gender</b>	<b>Female</b>	<b>28%</b>	<b>19%</b>	<b>10%</b>	<b>24%</b>	<b>17%</b>	<b>2%</b>
	<b>Male</b>	<b>18%</b>	<b>22%</b>	<b>11%</b>	<b>38%</b>	<b>10%</b>	<b>1%</b>
<b>Age</b>	<b>18-34</b>	<b>9%</b>	<b>32%</b>	<b>10%</b>	<b>28%</b>	<b>16%</b>	<b>4%</b>
	<b>35-54</b>	<b>17%</b>	<b>21%</b>	<b>15%</b>	<b>32%</b>	<b>14%</b>	<b>2%</b>
	<b>55-64</b>	<b>26%</b>	<b>15%</b>	<b>9%</b>	<b>37%</b>	<b>13%</b>	<b>0%</b>
	<b>65+</b>	<b>38%</b>	<b>18%</b>	<b>7%</b>	<b>24%</b>	<b>12%</b>	<b>0%</b>
<b>Education</b>	<b>High School or Less</b>	<b>11%</b>	<b>15%</b>	<b>11%</b>	<b>41%</b>	<b>21%</b>	<b>1%</b>
	<b>Some College/Associates Degree</b>	<b>18%</b>	<b>23%</b>	<b>11%</b>	<b>35%</b>	<b>10%</b>	<b>2%</b>
	<b>College Graduate</b>	<b>27%</b>	<b>18%</b>	<b>13%</b>	<b>26%</b>	<b>15%</b>	<b>0%</b>
	<b>Graduate/Professional School</b>	<b>34%</b>	<b>22%</b>	<b>6%</b>	<b>24%</b>	<b>11%</b>	<b>3%</b>
<b>Ideology</b>	<b>Very Conservative</b>	<b>1%</b>	<b>7%</b>	<b>13%</b>	<b>66%</b>	<b>12%</b>	<b>1%</b>
	<b>Somewhat Conservative</b>	<b>7%</b>	<b>7%</b>	<b>16%</b>	<b>52%</b>	<b>16%</b>	<b>1%</b>
	<b>Moderate</b>	<b>15%</b>	<b>16%</b>	<b>14%</b>	<b>30%</b>	<b>23%</b>	<b>2%</b>
	<b>Somewhat Liberal</b>	<b>46%</b>	<b>32%</b>	<b>6%</b>	<b>5%</b>	<b>12%</b>	
	<b>Very Liberal</b>	<b>43%</b>	<b>41%</b>	<b>2%</b>	<b>4%</b>	<b>5%</b>	<b>5%</b>
<b>Party Registration</b>	<b>Democratic</b>	<b>49%</b>	<b>31%</b>	<b>4%</b>	<b>5%</b>	<b>9%</b>	<b>2%</b>
	<b>Republican</b>	<b>2%</b>	<b>5%</b>	<b>14%</b>	<b>64%</b>	<b>14%</b>	<b>1%</b>
	<b>Undeclared</b>	<b>16%</b>	<b>22%</b>	<b>14%</b>	<b>28%</b>	<b>18%</b>	<b>1%</b>
<b>Party Identification</b>	<b>Democratic</b>	<b>44%</b>	<b>34%</b>	<b>4%</b>	<b>5%</b>	<b>12%</b>	<b>2%</b>
	<b>Republican</b>	<b>1%</b>	<b>5%</b>	<b>17%</b>	<b>59%</b>	<b>16%</b>	<b>1%</b>
	<b>Swing</b>	<b>10%</b>	<b>9%</b>	<b>19%</b>	<b>45%</b>	<b>14%</b>	<b>3%</b>
<b>Region</b>	<b>North Country/Lakes</b>	<b>17%</b>	<b>12%</b>	<b>12%</b>	<b>34%</b>	<b>24%</b>	
	<b>Monadnock/Dartmouth</b>	<b>15%</b>	<b>16%</b>	<b>7%</b>	<b>51%</b>	<b>10%</b>	
	<b>Merrimack Valley</b>	<b>26%</b>	<b>19%</b>	<b>12%</b>	<b>26%</b>	<b>15%</b>	<b>2%</b>
	<b>Seacoast/Border</b>	<b>24%</b>	<b>27%</b>	<b>11%</b>	<b>25%</b>	<b>13%</b>	<b>2%</b>
<b>Total</b>		<b>23%</b>	<b>20%</b>	<b>11%</b>	<b>31%</b>	<b>14%</b>	<b>2%</b>

<b>Timing of Afghanistan Withdrawal</b>					
		<b>Stay Indefinitely</b>	<b>Ensure Safety</b>	<b>Overdue</b>	<b>Shouldn't Have Been There</b>
<b>Gender</b>	<b>Female</b>	<b>8%</b>	<b>60%</b>	<b>13%</b>	<b>19%</b>
	<b>Male</b>	<b>10%</b>	<b>55%</b>	<b>16%</b>	<b>19%</b>
<b>Age</b>	<b>18-34</b>	<b>8%</b>	<b>50%</b>	<b>11%</b>	<b>30%</b>
	<b>35-54</b>	<b>10%</b>	<b>57%</b>	<b>13%</b>	<b>20%</b>
	<b>55-64</b>	<b>11%</b>	<b>61%</b>	<b>13%</b>	<b>15%</b>
	<b>65+</b>	<b>6%</b>	<b>61%</b>	<b>18%</b>	<b>15%</b>
<b>Education</b>	<b>High School or Less</b>	<b>11%</b>	<b>57%</b>	<b>10%</b>	<b>22%</b>
	<b>Some College/Associates Degree</b>	<b>9%</b>	<b>60%</b>	<b>14%</b>	<b>17%</b>
	<b>College Graduate</b>	<b>8%</b>	<b>58%</b>	<b>15%</b>	<b>19%</b>
	<b>Graduate/Professional School</b>	<b>8%</b>	<b>55%</b>	<b>16%</b>	<b>21%</b>
<b>Ideology</b>	<b>Very Conservative</b>	<b>15%</b>	<b>74%</b>	<b>1%</b>	<b>10%</b>
	<b>Somewhat Conservative</b>	<b>15%</b>	<b>71%</b>	<b>6%</b>	<b>9%</b>
	<b>Moderate</b>	<b>8%</b>	<b>46%</b>	<b>13%</b>	<b>33%</b>
	<b>Somewhat Liberal</b>	<b>3%</b>	<b>53%</b>	<b>26%</b>	<b>19%</b>
	<b>Very Liberal</b>	<b>4%</b>	<b>36%</b>	<b>23%</b>	<b>37%</b>
<b>Party Registration</b>	<b>Democratic</b>	<b>4%</b>	<b>47%</b>	<b>24%</b>	<b>24%</b>
	<b>Republican</b>	<b>15%</b>	<b>72%</b>	<b>3%</b>	<b>11%</b>
	<b>Undeclared</b>	<b>8%</b>	<b>56%</b>	<b>14%</b>	<b>22%</b>
<b>Party Identification</b>	<b>Democratic</b>	<b>4%</b>	<b>44%</b>	<b>25%</b>	<b>26%</b>
	<b>Republican</b>	<b>15%</b>	<b>72%</b>	<b>3%</b>	<b>11%</b>
	<b>Swing</b>	<b>5%</b>	<b>60%</b>	<b>10%</b>	<b>24%</b>
<b>Congressional District</b>	<b>CD-1</b>	<b>9%</b>	<b>60%</b>	<b>13%</b>	<b>18%</b>
	<b>CD-2</b>	<b>9%</b>	<b>56%</b>	<b>15%</b>	<b>20%</b>
<b>Region</b>	<b>North Country/Lakes</b>	<b>14%</b>	<b>59%</b>	<b>12%</b>	<b>16%</b>
	<b>Monadnock/Dartmouth</b>	<b>7%</b>	<b>68%</b>	<b>11%</b>	<b>15%</b>
	<b>Merrimack Valley</b>	<b>9%</b>	<b>55%</b>	<b>15%</b>	<b>21%</b>
	<b>Seacoast/Border</b>	<b>8%</b>	<b>58%</b>	<b>14%</b>	<b>19%</b>
<b>Total</b>		<b>9%</b>	<b>58%</b>	<b>14%</b>	<b>19%</b>

<b>Responsibility for Afghanistan Situation</b>						
		<b>Bush</b>	<b>Obama</b>	<b>Trump</b>	<b>Biden</b>	<b>Unsure</b>
<b>Gender</b>	<b>Female</b>	<b>30%</b>	<b>4%</b>	<b>16%</b>	<b>37%</b>	<b>14%</b>
	<b>Male</b>	<b>25%</b>	<b>4%</b>	<b>11%</b>	<b>52%</b>	<b>8%</b>
<b>Age</b>	<b>18-34</b>	<b>44%</b>	<b>3%</b>	<b>6%</b>	<b>40%</b>	<b>7%</b>
	<b>35-54</b>	<b>28%</b>	<b>4%</b>	<b>11%</b>	<b>48%</b>	<b>8%</b>
	<b>55-64</b>	<b>22%</b>	<b>5%</b>	<b>14%</b>	<b>47%</b>	<b>12%</b>
	<b>65+</b>	<b>23%</b>	<b>3%</b>	<b>19%</b>	<b>39%</b>	<b>16%</b>
<b>Education</b>	<b>High School or Less</b>	<b>26%</b>	<b>6%</b>	<b>10%</b>	<b>49%</b>	<b>9%</b>
	<b>Some College/Associates Degree</b>	<b>24%</b>	<b>4%</b>	<b>12%</b>	<b>51%</b>	<b>9%</b>
	<b>College Graduate</b>	<b>28%</b>	<b>3%</b>	<b>14%</b>	<b>42%</b>	<b>13%</b>
	<b>Graduate/Professional School</b>	<b>33%</b>	<b>3%</b>	<b>17%</b>	<b>33%</b>	<b>14%</b>
<b>Ideology</b>	<b>Very Conservative</b>	<b>3%</b>	<b>7%</b>		<b>87%</b>	<b>3%</b>
	<b>Somewhat Conservative</b>	<b>7%</b>	<b>6%</b>	<b>5%</b>	<b>75%</b>	<b>7%</b>
	<b>Moderate</b>	<b>33%</b>	<b>4%</b>	<b>11%</b>	<b>39%</b>	<b>13%</b>
	<b>Somewhat Liberal</b>	<b>41%</b>	<b>1%</b>	<b>27%</b>	<b>11%</b>	<b>19%</b>
	<b>Very Liberal</b>	<b>63%</b>	<b>1%</b>	<b>20%</b>	<b>5%</b>	<b>12%</b>
<b>Party Registration</b>	<b>Democratic</b>	<b>49%</b>	<b>1%</b>	<b>24%</b>	<b>9%</b>	<b>17%</b>
	<b>Republican</b>	<b>5%</b>	<b>7%</b>	<b>1%</b>	<b>83%</b>	<b>3%</b>
	<b>Undeclared</b>	<b>27%</b>	<b>4%</b>	<b>14%</b>	<b>42%</b>	<b>13%</b>
<b>Party Identification</b>	<b>Democratic</b>	<b>49%</b>	<b>1%</b>	<b>25%</b>	<b>8%</b>	<b>17%</b>
	<b>Republican</b>	<b>5%</b>	<b>7%</b>	<b>2%</b>	<b>81%</b>	<b>4%</b>
	<b>Swing</b>	<b>19%</b>	<b>1%</b>	<b>8%</b>	<b>54%</b>	<b>18%</b>
<b>Congressional District</b>	<b>CD-1</b>	<b>26%</b>	<b>4%</b>	<b>13%</b>	<b>44%</b>	<b>13%</b>
	<b>CD-2</b>	<b>29%</b>	<b>4%</b>	<b>14%</b>	<b>44%</b>	<b>9%</b>
<b>Region</b>	<b>North Country/Lakes</b>	<b>21%</b>	<b>5%</b>	<b>10%</b>	<b>45%</b>	<b>19%</b>
	<b>Monadnock/Dartmouth</b>	<b>25%</b>	<b>4%</b>	<b>9%</b>	<b>56%</b>	<b>7%</b>
	<b>Merrimack Valley</b>	<b>29%</b>	<b>4%</b>	<b>15%</b>	<b>41%</b>	<b>10%</b>
	<b>Seacoast/Border</b>	<b>28%</b>	<b>3%</b>	<b>14%</b>	<b>44%</b>	<b>11%</b>
<b>Total</b>		<b>27%</b>	<b>4%</b>	<b>13%</b>	<b>44%</b>	<b>11%</b>

<b>Accept Afghan Refugees</b>				
		<b>All</b>	<b>Some</b>	<b>None</b>
<b>Gender</b>	<b>Female</b>	<b>38%</b>	<b>54%</b>	<b>8%</b>
	<b>Male</b>	<b>36%</b>	<b>55%</b>	<b>9%</b>
<b>Age</b>	<b>18-34</b>	<b>45%</b>	<b>44%</b>	<b>11%</b>
	<b>35-54</b>	<b>37%</b>	<b>55%</b>	<b>9%</b>
	<b>55-64</b>	<b>37%</b>	<b>52%</b>	<b>10%</b>
	<b>65+</b>	<b>33%</b>	<b>63%</b>	<b>4%</b>
<b>Education</b>	<b>High School or Less</b>	<b>29%</b>	<b>59%</b>	<b>12%</b>
	<b>Some College/Associates Degree</b>	<b>32%</b>	<b>58%</b>	<b>11%</b>
	<b>College Graduate</b>	<b>40%</b>	<b>54%</b>	<b>6%</b>
	<b>Graduate/Professional School</b>	<b>49%</b>	<b>47%</b>	<b>4%</b>
<b>Ideology</b>	<b>Very Conservative</b>	<b>17%</b>	<b>65%</b>	<b>19%</b>
	<b>Somewhat Conservative</b>	<b>24%</b>	<b>66%</b>	<b>10%</b>
	<b>Moderate</b>	<b>27%</b>	<b>60%</b>	<b>13%</b>
	<b>Somewhat Liberal</b>	<b>49%</b>	<b>49%</b>	<b>1%</b>
	<b>Very Liberal</b>	<b>72%</b>	<b>26%</b>	<b>2%</b>
<b>Party Registration</b>	<b>Democratic</b>	<b>55%</b>	<b>43%</b>	<b>2%</b>
	<b>Republican</b>	<b>20%</b>	<b>63%</b>	<b>17%</b>
	<b>Undeclared</b>	<b>36%</b>	<b>58%</b>	<b>6%</b>
<b>Party Identification</b>	<b>Democratic</b>	<b>55%</b>	<b>44%</b>	<b>1%</b>
	<b>Republican</b>	<b>20%</b>	<b>64%</b>	<b>16%</b>
	<b>Swing</b>	<b>25%</b>	<b>68%</b>	<b>7%</b>
<b>Congressional District</b>	<b>CD-1</b>	<b>37%</b>	<b>56%</b>	<b>7%</b>
	<b>CD-2</b>	<b>38%</b>	<b>52%</b>	<b>10%</b>
<b>Region</b>	<b>North Country/Lakes</b>	<b>30%</b>	<b>57%</b>	<b>14%</b>
	<b>Monadnock/Dartmouth</b>	<b>40%</b>	<b>49%</b>	<b>11%</b>
	<b>Merrimack Valley</b>	<b>36%</b>	<b>57%</b>	<b>8%</b>
	<b>Seacoast/Border</b>	<b>40%</b>	<b>53%</b>	<b>7%</b>
<b>Total</b>		<b>37%</b>	<b>54%</b>	<b>8%</b>

<b>Afghanistan Impact on Election Views</b>				
		<b>Inclined More Democratic</b>	<b>Inclined More Republican</b>	<b>No Difference</b>
<b>Gender</b>	<b>Female</b>	<b>16%</b>	<b>38%</b>	<b>46%</b>
	<b>Male</b>	<b>11%</b>	<b>49%</b>	<b>40%</b>
<b>Age</b>	<b>18-34</b>	<b>9%</b>	<b>39%</b>	<b>52%</b>
	<b>35-54</b>	<b>11%</b>	<b>46%</b>	<b>43%</b>
	<b>55-64</b>	<b>11%</b>	<b>44%</b>	<b>45%</b>
	<b>65+</b>	<b>23%</b>	<b>41%</b>	<b>36%</b>
<b>Education</b>	<b>High School or Less</b>	<b>11%</b>	<b>57%</b>	<b>32%</b>
	<b>Some College/Associates Degree</b>	<b>13%</b>	<b>49%</b>	<b>38%</b>
	<b>College Graduate</b>	<b>14%</b>	<b>38%</b>	<b>48%</b>
	<b>Graduate/Professional School</b>	<b>18%</b>	<b>30%</b>	<b>52%</b>
<b>Ideology</b>	<b>Very Conservative</b>		<b>83%</b>	<b>17%</b>
	<b>Somewhat Conservative</b>	<b>4%</b>	<b>73%</b>	<b>24%</b>
	<b>Moderate</b>	<b>8%</b>	<b>43%</b>	<b>49%</b>
	<b>Somewhat Liberal</b>	<b>28%</b>	<b>11%</b>	<b>62%</b>
	<b>Very Liberal</b>	<b>28%</b>	<b>4%</b>	<b>68%</b>
<b>Party Registration</b>	<b>Democratic</b>	<b>30%</b>	<b>8%</b>	<b>62%</b>
	<b>Republican</b>	<b>1%</b>	<b>77%</b>	<b>22%</b>
	<b>Undeclared</b>	<b>10%</b>	<b>45%</b>	<b>44%</b>
<b>Party Identification</b>	<b>Democratic</b>	<b>27%</b>	<b>7%</b>	<b>65%</b>
	<b>Republican</b>	<b>1%</b>	<b>80%</b>	<b>20%</b>
	<b>Swing</b>	<b>3%</b>	<b>55%</b>	<b>43%</b>
<b>Congressional District</b>	<b>CD-1</b>	<b>14%</b>	<b>44%</b>	<b>42%</b>
	<b>CD-2</b>	<b>14%</b>	<b>42%</b>	<b>44%</b>
<b>Region</b>	<b>North Country/Lakes</b>	<b>8%</b>	<b>49%</b>	<b>43%</b>
	<b>Monadnock/Dartmouth</b>	<b>7%</b>	<b>45%</b>	<b>48%</b>
	<b>Merrimack Valley</b>	<b>14%</b>	<b>41%</b>	<b>45%</b>
	<b>Seacoast/Border</b>	<b>17%</b>	<b>43%</b>	<b>40%</b>
<b>Total</b>		<b>14%</b>	<b>43%</b>	<b>43%</b>



<b>Vaccine Mandate</b>				
		<b>Support</b>	<b>Oppose</b>	<b>Unsure</b>
<b>Gender</b>	<b>Female</b>	<b>57%</b>	<b>40%</b>	<b>2%</b>
	<b>Male</b>	<b>43%</b>	<b>53%</b>	<b>4%</b>
<b>Age</b>	<b>18-34</b>	<b>47%</b>	<b>49%</b>	<b>4%</b>
	<b>35-54</b>	<b>45%</b>	<b>52%</b>	<b>2%</b>
	<b>55-64</b>	<b>47%</b>	<b>49%</b>	<b>4%</b>
	<b>65+</b>	<b>62%</b>	<b>36%</b>	<b>2%</b>
<b>Education</b>	<b>High School or Less</b>	<b>36%</b>	<b>61%</b>	<b>3%</b>
	<b>Some College/Associates Degree</b>	<b>43%</b>	<b>52%</b>	<b>4%</b>
	<b>College Graduate</b>	<b>55%</b>	<b>43%</b>	<b>3%</b>
	<b>Graduate/Professional School</b>	<b>67%</b>	<b>32%</b>	<b>1%</b>
<b>Ideology</b>	<b>Very Conservative</b>	<b>10%</b>	<b>88%</b>	<b>2%</b>
	<b>Somewhat Conservative</b>	<b>28%</b>	<b>69%</b>	<b>3%</b>
	<b>Moderate</b>	<b>37%</b>	<b>59%</b>	<b>5%</b>
	<b>Somewhat Liberal</b>	<b>83%</b>	<b>14%</b>	<b>3%</b>
	<b>Very Liberal</b>	<b>89%</b>	<b>8%</b>	<b>3%</b>
<b>Party Registration</b>	<b>Democratic</b>	<b>85%</b>	<b>12%</b>	<b>3%</b>
	<b>Republican</b>	<b>17%</b>	<b>80%</b>	<b>2%</b>
	<b>Undeclared</b>	<b>48%</b>	<b>49%</b>	<b>3%</b>
<b>Party Identification</b>	<b>Democratic</b>	<b>84%</b>	<b>13%</b>	<b>3%</b>
	<b>Republican</b>	<b>17%</b>	<b>80%</b>	<b>3%</b>
	<b>Swing</b>	<b>30%</b>	<b>66%</b>	<b>3%</b>
<b>Congressional District</b>	<b>CD-1</b>	<b>50%</b>	<b>46%</b>	<b>3%</b>
	<b>CD-2</b>	<b>51%</b>	<b>47%</b>	<b>3%</b>
<b>Region</b>	<b>North Country/Lakes</b>	<b>42%</b>	<b>57%</b>	<b>1%</b>
	<b>Monadnock/Dartmouth</b>	<b>37%</b>	<b>60%</b>	<b>3%</b>
	<b>Merrimack Valley</b>	<b>55%</b>	<b>43%</b>	<b>3%</b>
	<b>Seacoast/Border</b>	<b>52%</b>	<b>44%</b>	<b>4%</b>
<b>Total</b>		<b>50%</b>	<b>47%</b>	<b>3%</b>

<b>Vaccine Mandate</b>						
		<b>Strongly Support</b>	<b>Somewhat Support</b>	<b>Somewhat Oppose</b>	<b>Strongly Oppose</b>	<b>Unsure</b>
<b>Gender</b>	<b>Female</b>	<b>45%</b>	<b>12%</b>	<b>7%</b>	<b>34%</b>	<b>2%</b>
	<b>Male</b>	<b>32%</b>	<b>11%</b>	<b>9%</b>	<b>44%</b>	<b>4%</b>
<b>Age</b>	<b>18-34</b>	<b>39%</b>	<b>8%</b>	<b>6%</b>	<b>42%</b>	<b>4%</b>
	<b>35-54</b>	<b>30%</b>	<b>15%</b>	<b>9%</b>	<b>43%</b>	<b>2%</b>
	<b>55-64</b>	<b>36%</b>	<b>11%</b>	<b>7%</b>	<b>42%</b>	<b>4%</b>
	<b>65+</b>	<b>52%</b>	<b>11%</b>	<b>9%</b>	<b>27%</b>	<b>2%</b>
<b>Education</b>	<b>High School or Less</b>	<b>28%</b>	<b>8%</b>	<b>6%</b>	<b>55%</b>	<b>3%</b>
	<b>Some College/Associates Degree</b>	<b>33%</b>	<b>10%</b>	<b>9%</b>	<b>44%</b>	<b>4%</b>
	<b>College Graduate</b>	<b>41%</b>	<b>13%</b>	<b>9%</b>	<b>34%</b>	<b>3%</b>
	<b>Graduate/Professional School</b>	<b>52%</b>	<b>15%</b>	<b>7%</b>	<b>25%</b>	<b>1%</b>
<b>Ideology</b>	<b>Very Conservative</b>	<b>5%</b>	<b>5%</b>	<b>9%</b>	<b>79%</b>	<b>2%</b>
	<b>Somewhat Conservative</b>	<b>15%</b>	<b>13%</b>	<b>11%</b>	<b>58%</b>	<b>3%</b>
	<b>Moderate</b>	<b>30%</b>	<b>7%</b>	<b>8%</b>	<b>50%</b>	<b>5%</b>
	<b>Somewhat Liberal</b>	<b>66%</b>	<b>17%</b>	<b>6%</b>	<b>8%</b>	<b>3%</b>
	<b>Very Liberal</b>	<b>78%</b>	<b>11%</b>	<b>3%</b>	<b>5%</b>	<b>3%</b>
<b>Party Registration</b>	<b>Democratic</b>	<b>71%</b>	<b>14%</b>	<b>4%</b>	<b>8%</b>	<b>3%</b>
	<b>Republican</b>	<b>7%</b>	<b>10%</b>	<b>11%</b>	<b>69%</b>	<b>2%</b>
	<b>Undeclared</b>	<b>36%</b>	<b>11%</b>	<b>9%</b>	<b>40%</b>	<b>3%</b>
<b>Party Identification</b>	<b>Democratic</b>	<b>70%</b>	<b>14%</b>	<b>4%</b>	<b>8%</b>	<b>3%</b>
	<b>Republican</b>	<b>8%</b>	<b>9%</b>	<b>12%</b>	<b>68%</b>	<b>3%</b>
	<b>Swing</b>	<b>21%</b>	<b>9%</b>	<b>6%</b>	<b>61%</b>	<b>3%</b>
<b>Congressional District</b>	<b>CD-1</b>	<b>38%</b>	<b>12%</b>	<b>9%</b>	<b>37%</b>	<b>3%</b>
	<b>CD-2</b>	<b>39%</b>	<b>11%</b>	<b>7%</b>	<b>40%</b>	<b>3%</b>
<b>Region</b>	<b>North Country/Lakes</b>	<b>32%</b>	<b>10%</b>	<b>11%</b>	<b>45%</b>	<b>1%</b>
	<b>Monadnock/Dartmouth</b>	<b>31%</b>	<b>6%</b>	<b>10%</b>	<b>50%</b>	<b>3%</b>
	<b>Merrimack Valley</b>	<b>41%</b>	<b>13%</b>	<b>6%</b>	<b>36%</b>	<b>3%</b>
	<b>Seacoast/Border</b>	<b>40%</b>	<b>12%</b>	<b>8%</b>	<b>36%</b>	<b>4%</b>
<b>Total</b>		<b>39%</b>	<b>12%</b>	<b>8%</b>	<b>39%</b>	<b>3%</b>

<b>Timing of Booster Shot</b>					
		<b>ASAP</b>	<b>When Convenient</b>	<b>No</b>	<b>Decline to Answer</b>
<b>Gender</b>	<b>Female</b>	<b>56%</b>	<b>10%</b>	<b>25%</b>	<b>9%</b>
	<b>Male</b>	<b>48%</b>	<b>12%</b>	<b>30%</b>	<b>10%</b>
<b>Age</b>	<b>18-34</b>	<b>49%</b>	<b>10%</b>	<b>37%</b>	<b>4%</b>
	<b>35-54</b>	<b>45%</b>	<b>12%</b>	<b>33%</b>	<b>10%</b>
	<b>55-64</b>	<b>48%</b>	<b>13%</b>	<b>27%</b>	<b>12%</b>
	<b>65+</b>	<b>67%</b>	<b>9%</b>	<b>15%</b>	<b>10%</b>
<b>Education</b>	<b>High School or Less</b>	<b>32%</b>	<b>13%</b>	<b>42%</b>	<b>14%</b>
	<b>Some College/Associates Degree</b>	<b>49%</b>	<b>9%</b>	<b>31%</b>	<b>10%</b>
	<b>College Graduate</b>	<b>57%</b>	<b>12%</b>	<b>23%</b>	<b>7%</b>
	<b>Graduate/Professional School</b>	<b>66%</b>	<b>13%</b>	<b>15%</b>	<b>7%</b>
<b>Ideology</b>	<b>Very Conservative</b>	<b>16%</b>	<b>11%</b>	<b>55%</b>	<b>18%</b>
	<b>Somewhat Conservative</b>	<b>33%</b>	<b>14%</b>	<b>40%</b>	<b>13%</b>
	<b>Moderate</b>	<b>37%</b>	<b>15%</b>	<b>36%</b>	<b>13%</b>
	<b>Somewhat Liberal</b>	<b>82%</b>	<b>9%</b>	<b>5%</b>	<b>4%</b>
	<b>Very Liberal</b>	<b>85%</b>	<b>8%</b>	<b>7%</b>	<b>0%</b>
<b>Party Registration</b>	<b>Democratic</b>	<b>82%</b>	<b>8%</b>	<b>7%</b>	<b>3%</b>
	<b>Republican</b>	<b>24%</b>	<b>12%</b>	<b>49%</b>	<b>15%</b>
	<b>Undeclared</b>	<b>49%</b>	<b>13%</b>	<b>27%</b>	<b>10%</b>
<b>Party Identification</b>	<b>Democratic</b>	<b>81%</b>	<b>9%</b>	<b>7%</b>	<b>3%</b>
	<b>Republican</b>	<b>24%</b>	<b>14%</b>	<b>48%</b>	<b>15%</b>
	<b>Swing</b>	<b>34%</b>	<b>13%</b>	<b>34%</b>	<b>20%</b>
<b>Congressional District</b>	<b>CD-1</b>	<b>52%</b>	<b>12%</b>	<b>25%</b>	<b>10%</b>
	<b>CD-2</b>	<b>52%</b>	<b>10%</b>	<b>29%</b>	<b>8%</b>
<b>Region</b>	<b>North Country/Lakes</b>	<b>47%</b>	<b>8%</b>	<b>28%</b>	<b>17%</b>
	<b>Monadnock/Dartmouth</b>	<b>47%</b>	<b>9%</b>	<b>40%</b>	<b>4%</b>
	<b>Merrimack Valley</b>	<b>53%</b>	<b>14%</b>	<b>24%</b>	<b>9%</b>
	<b>Seacoast/Border</b>	<b>54%</b>	<b>11%</b>	<b>27%</b>	<b>9%</b>
<b>Total</b>		<b>52%</b>	<b>11%</b>	<b>27%</b>	<b>9%</b>

**If the election for US Senate were today, and the candidates were Maggie Hassan and Chris Sununu, for whom would you vote?**

		Hassan	Sununu	Someone Else	Unsure
Gender	Female	46%	44%	5%	4%
	Male	34%	55%	7%	4%
Age	18-34	46%	40%	10%	3%
	35-54	36%	53%	7%	4%
	55-64	37%	53%	6%	4%
	65+	46%	47%	2%	5%
Education	High School or Less	31%	62%	5%	2%
	Some College/Associates Degree	32%	55%	7%	6%
	College Graduate	44%	47%	6%	3%
	Graduate/Professional School	57%	34%	5%	4%
Ideology	Very Conservative	1%	91%	6%	1%
	Somewhat Conservative	9%	85%	4%	3%
	Moderate	24%	45%	20%	11%
	Somewhat Liberal	77%	14%	4%	5%
	Very Liberal	90%	5%	3%	1%
Party Registration	Democratic	83%	11%	4%	2%
	Republican	2%	89%	7%	1%
	Undeclared	34%	50%	8%	8%
Party Identification	Democratic	80%	11%	4%	5%
	Republican	3%	89%	7%	2%
	Swing	12%	63%	17%	9%
Congressional District	CD-1	41%	49%	5%	5%
	CD-2	40%	50%	7%	3%
Region	North Country/Lakes	33%	58%	5%	4%
	Monadnock/Dartmouth	29%	53%	15%	3%
	Merrimack Valley	43%	49%	5%	4%
	Seacoast/Border	43%	47%	6%	5%
Total		40%	49%	6%	4%

# DEMOGRAPHICS

August 24-26, 2021

n = 1855

New Hampshire Registered Voters

MoE +/- 2.3%

Gender			
		Frequency	Percent
	Female	965	52
	Male	890	48
	Total	1855	100

Age			
		Frequency	Percent
	18-34	289	16
	35-54	601	32
	55-64	484	26
	65+	480	26
	Total	1855	100

Education			
		Frequency	Percent
	High School or Less	310	17
	Some College/Associates Degree	623	34
	College Graduate	516	28
	Graduate/Professional School	406	22
	Total	1855	100

<b>Ideology</b>			
		<b>Frequency</b>	<b>Percent</b>
	<b>Very Conservative</b>	<b>282</b>	<b>15</b>
	<b>Somewhat Conservative</b>	<b>551</b>	<b>30</b>
	<b>Moderate</b>	<b>239</b>	<b>13</b>
	<b>Somewhat Liberal</b>	<b>493</b>	<b>27</b>
	<b>Very Liberal</b>	<b>289</b>	<b>16</b>
	<b>Conservative</b>	<b>833</b>	<b>45</b>
	<b>Moderate</b>	<b>239</b>	<b>13</b>
	<b>Liberal</b>	<b>783</b>	<b>42</b>
	<b>Total</b>	<b>1855</b>	<b>100</b>

<b>Party Registration</b>			
		<b>Frequency</b>	<b>Percent</b>
	<b>Democratic</b>	<b>633</b>	<b>34</b>
	<b>Republican</b>	<b>607</b>	<b>33</b>
	<b>Undeclared</b>	<b>616</b>	<b>33</b>
	<b>Total</b>	<b>1855</b>	<b>100</b>
<b>CD-1</b>	<b>Democratic</b>	<b>336</b>	<b>34</b>
	<b>Republican</b>	<b>345</b>	<b>35</b>
	<b>Undeclared</b>	<b>31</b>	<b>31</b>
	<b>Total</b>	<b>991</b>	<b>100</b>
<b>CD-2</b>	<b>Democratic</b>	<b>297</b>	<b>34</b>
	<b>Republican</b>	<b>261</b>	<b>30</b>
	<b>Undeclared</b>	<b>306</b>	<b>35</b>
	<b>Total</b>	<b>864</b>	<b>100</b>

<b>Party Identification</b>			
		<b>Frequency</b>	<b>Percent</b>
	<b>Democratic</b>	<b>895</b>	<b>48</b>
	<b>Republican</b>	<b>845</b>	<b>46</b>
	<b>Swing</b>	<b>115</b>	<b>6</b>
	<b>Total</b>	<b>1855</b>	<b>100</b>
<b>CD-1</b>	<b>Democratic</b>	<b>463</b>	<b>47</b>
	<b>Republican</b>	<b>471</b>	<b>48</b>
	<b>Swing</b>	<b>57</b>	<b>6</b>
	<b>Total</b>	<b>991</b>	<b>100</b>
<b>CD-2</b>	<b>Democratic</b>	<b>433</b>	<b>50</b>
	<b>Republican</b>	<b>373</b>	<b>43</b>
	<b>Swing</b>	<b>58</b>	<b>7</b>
	<b>Total</b>	<b>864</b>	<b>100</b>

<b>Congressional District</b>			
		<b>Frequency</b>	<b>Percent</b>
	<b>CD-1</b>	<b>991</b>	<b>53</b>
	<b>CD-2</b>	<b>864</b>	<b>47</b>
	<b>Total</b>	<b>1855</b>	<b>100</b>

<b>Region</b>			
		<b>Frequency</b>	<b>Percent</b>
	<b>North Country/Lakes</b>	<b>200</b>	<b>11</b>
	<b>Monadnock/Dartmouth</b>	<b>185</b>	<b>10</b>
	<b>Merrimack Valley</b>	<b>727</b>	<b>39</b>
	<b>Seacoast/Border</b>	<b>742</b>	<b>40</b>
	<b>Total</b>	<b>1855</b>	<b>100</b>

# ABOUT THE SAINT ANSELM COLLEGE SURVEY CENTER

---

The Saint Anselm College Survey Center (SACSC) was founded in the wake of the 2016 election, and launched its first poll in February 2018 as the midterm elections were getting underway. Housed within the New Hampshire Institute of Politics at Saint Anselm College, the Center conducts quarterly polls of New Hampshire voter attitudes and additional polls as circumstances warrant. This research supports the academic mission of the College, and provides students with a practical education in survey techniques while providing the public at large with insight into political opinion trends that impact the state's federal and gubernatorial elections. The Center's political surveys were the most accurate New Hampshire election polling throughout the 2020 cycle. To support its operations, the Center performs commissioned research on behalf of nonprofit organizations and corporations.

For more information on SACSC, please visit:  
[anselm.edu/new-hampshire-institute-politics/polling](https://anselm.edu/new-hampshire-institute-politics/polling)

For inquiries, please contact: [nhioppoll@anselm.edu](mailto:nhioppoll@anselm.edu)