

A SURVEY OF NEW HAMPSHIRE VOTER ATTITUDES

CONDUCTED
JUNE 9-11, 2021

Neil Levesque

EXECUTIVE DIRECTOR,
NEW HAMPSHIRE INSTITUTE OF POLITICS

FACULTY ADVISOR

Tauna Sisco

CHAIR, DEPARTMENT OF SOCIOLOGY



**NEW HAMPSHIRE
INSTITUTE OF POLITICS**
Saint Anselm College

Survey Notes	3
Key Findings	4
Weighted Marginals	6
Weighted Tables	19
Demographics	69
Charts	72
About the SACSC	77

These results are from the Saint Anselm College Survey Center poll based on online surveys of 921 New Hampshire registered voters. Surveys were collected between June 9th and 11th, 2021, from cell phone users randomly drawn from a sample of registered voters reflecting the demographic and partisan characteristics of the voting population. Names were presented in random order for each of the political leader series (image and job approval). Issues were presented in random order for the issue matrix question and for the presidential handling series. The survey has an overall margin of sampling error of +/- 3.2% with a confidence interval of 95%; the margin of sampling error for questions specific to congressional districts are 4.4% for the 1st Congressional District and 4.7% for the 2nd Congressional District. The data are weighted for age, gender, geography, and education based on a voter demographic model derived from historical voting patterns, but are not weighted by party registration or party identification.

As more people are vaccinated and start resuming their normal daily routine, COVID-19 is receding as an issue of importance to voters.

- **Only 13% of respondents rank COVID-19 as their top concern.** Government spending is the top concern of 22% of voters, followed by illegal immigration and cost of health care at 20%, and climate change at 18%. Foreign aggression trails COVID at only 8%.
- **Cost of health care ranks as the highest concern by average, with a mean rank of 2.89.** Government spending follows at 3.18, trailed by illegal immigration at 3.64, foreign aggression at 3.69, COVID-19 at 3.78, and climate change at 3.82.
- **Voters are worried about structural economic issues.** 83% are very or somewhat worried about inflation, while 77% are very or somewhat worried about the national debt.

Voter concerns are moving away from President Joe Biden's strengths to areas where he is considerably weaker.

- **Of six areas tested, a majority of respondents rated Biden's handling of only one issue as excellent or good: COVID-19.** 39% rated Biden's handling of the epidemic as excellent, 12% as good, 17% as fair, and 31% as poor.
- **A majority of respondents rated Biden's handling of the remainder of the areas tested as only fair or poor.** 55% rated his handling of environmental issues as fair or poor, with similar attitudes for race issues (57%); national security and foreign affairs (57%), economy (58%), and cost of energy (60%).

As pocketbook issues displace other issues of concern, Biden's job approval has fallen since his inauguration.

- **A very slight plurality (49.4%-49.3%) disapproves of the job he is doing.** In SACSC's February poll, Biden's job approval (53%-45%) was identical to his margin of victory in New Hampshire.
- **Biden's image is now net negative at 50%-49%.** This follows a similar downward trend as the job approval, falling from 53%-46% in February and 50%-49% in March.

As the President's strength erodes in the face of economic challenges, voters are becoming more pessimistic.

- **After falling in February to the lowest level (55%) over the history of SACSC polling, the percentage of respondents who believe the country is on the wrong track has rebounded to 59%.** This number is converging with SACSC's last pre-election poll, when it sat at 61%.

Voter pessimism is exerting downward political pressure on the party in power.

- **The generic congressional ballot is now at the closest margin (44% Democratic – 43% Republican) in the history of SACSC polling.** The Republican Party has never led on this question, and the previous closest margin was 3 points, at 46%-43%, in June of 2020.

- **This represents a significant deterioration in the political environment for the Democratic Party in just a few months.** The Democratic lead in the generic ballot has shrunk 7 points from 48%-40% since March.
- **This deterioration is across demographic and partisan lines.** Generic support for Democratic candidates is down since March: 5 points among females and 3 points among males; 5 points among older (55+) voters and 3 points among younger (18-54) voters; 4 points among registered Democratic voters and 4 points among undeclared voters.

Members of New Hampshire's Congressional delegation are getting pulled down toward the generic ballot.

- **Job approval is down 3-5 points for each of the members of the delegation since March.** Senator Jeanne Shaheen is down 4 points to 47% approval; Senator Maggie Hassan is down 4 points to 43% approval; Congressman Pappas is down 3 points to 42% approval, and Congresswoman Kuster is down 5 points to 43% approval.
- **As with the generic ballot, the deterioration of the delegation's job approval is across demographic and partisan lines.** Shaheen's approval is down since March: 5 points among females and 4 among males; 5 points among older voters and 2 among younger voters; 4 points among registered Democratic voters and 6 among undeclared voters. Hassan's is down: 6 points among females and 1 among males; 3 points among older and 4 among younger voters; 4 points among Dems and 6 among UND. Pappas' is down 8 points among females and up a point among males; down 7 points among older and up 2 among younger voters; even with Dems and down 7 points among UND. Kuster's is down 5 points among females and 4 among males; 2 points among older and 7 among younger voters; 4 points among Dems and 4 among UND.
- **Pappas alone in the delegation shows buoyancy against the generic ballot.** His approval (42%) is even with generic Democratic ballot strength, but his disapproval (39%) is 4 points under generic Republican ballot strength. This is reflected in his approval durability among some demographics.

Governor Chris Sununu remains popular as voters are relatively optimistic about New Hampshire's future.

- **A plurality (42%) of voters believes that New Hampshire is on the right track.** 37% believe the state is on the wrong track.
- **Sununu's job approval stands at 68%-30%.** This is a slight improvement from March (67%-31%).

Election Day is a long ways away...expect a rebound for Democratic officeholders as the importance of individual issues continues to wax and wane.

- **The cost of health care is still a potent political issue.** Although government spending was cited by the most voters as their top concern, the cost of health care scored the highest by average. This is an issue that has been perennially near the top of the list of voters' concerns, and one that has been a traditional area of strength for the Democratic Party.

WEIGHTED MARGINALS

June 9-11, 2021

n = 921

New Hampshire Registered Voters

MoE +/- 3.2%

Would you say that things in our country are heading in the right direction, or have things gotten off on the wrong track?

		Frequency	Percent
	Right Track	278	30
	Wrong Track	547	59
	Unsure	96	10
	Total	921	100

Would you say that things in our state are heading in the right direction, or have things gotten off on the wrong track?

		Frequency	Percent
	Right Track	384	42
	Wrong Track	343	37
	Unsure	194	21
	Total	921	100

If the election for Congress were held today, for which candidate would you likely vote?

		Frequency	Percent
	Democratic	404	44
	Republican	397	43
	Other	30	3
	Unsure	90	10
	Total	921	100

Joe Biden Image			
		Frequency	Percent
	Strongly Favorable	257	28
	Somewhat Favorable	194	21
	Somewhat Unfavorable	59	6
	Strongly Unfavorable	404	44
	No Opinion	7	1
	Never Heard Of	1	0
	Favorable	451	49
	Unfavorable	463	50
	No Opinion	7	1
	Total	921	100

Chris Sununu Image			
		Frequency	Percent
	Strongly Favorable	282	31
	Somewhat Favorable	334	36
	Somewhat Unfavorable	174	19
	Strongly Unfavorable	114	12
	No Opinion	16	2
	Never Heard Of	2	0
	Favorable	616	67
	Unfavorable	287	31
	No Opinion	18	2
	Total	921	100

Jeanne Shaheen Image			
		Frequency	Percent
	Strongly Favorable	251	27
	Somewhat Favorable	204	22
	Somewhat Unfavorable	144	16
	Strongly Unfavorable	278	30
	No Opinion	42	5
	Never Heard Of	1	0
	Favorable	455	49
	Unfavorable	422	46
	No Opinion	44	5
	Total	921	100

Maggie Hassan Image			
		Frequency	Percent
	Strongly Favorable	196	21
	Somewhat Favorable	224	24
	Somewhat Unfavorable	129	14
	Strongly Unfavorable	319	35
	No Opinion	45	5
	Never Heard Of	8	1
	Favorable	420	46
	Unfavorable	448	49
	No Opinion	52	6
	Total	921	100

Chris Pappas Image			
		Frequency	Percent
	Strongly Favorable	93	19
	Somewhat Favorable	131	27
	Somewhat Unfavorable	50	10
	Strongly Unfavorable	139	28
	No Opinion	66	13
	Never Heard Of	12	2
	Favorable	223	46
	Unfavorable	189	39
	No Opinion	78	16
	Total	490	100

Annie Kuster Image			
		Frequency	Percent
	Strongly Favorable	91	21
	Somewhat Favorable	99	23
	Somewhat Unfavorable	44	10
	Strongly Unfavorable	143	33
	No Opinion	45	11
	Never Heard Of	9	2
	Favorable	190	44
	Unfavorable	187	43
	No Opinion	54	13
	Total	431	100

President Joe Biden Job Approval			
		Frequency	Percent
	Strongly Approve	261	28
	Somewhat Approve	193	21
	Somewhat Disapprove	44	5
	Strongly Disapprove	411	45
	No Opinion	12	1
	Approve	454	49
	Disapprove	455	49
	No Opinion	12	1
	Total	921	100

Governor Chris Sununu Job Approval			
		Frequency	Percent
	Strongly Approve	271	29
	Somewhat Approve	355	39
	Somewhat Disapprove	175	19
	Strongly Disapprove	103	11
	No Opinion	15	2
	Never Heard Of	1	0
	Approve	627	68
	Disapprove	278	30
	No Opinion	16	2
	Total	921	100

Senator Jeanne Shaheen Job Approval			
		Frequency	Percent
	Strongly Approve	234	25
	Somewhat Approve	201	22
	Somewhat Disapprove	134	15
	Strongly Disapprove	284	31
	No Opinion	68	7
	Approve	435	47
	Disapprove	418	45
	No Opinion	68	7
	Total	921	100

Senator Maggie Hassan Job Approval			
		Frequency	Percent
	Strongly Approve	200	22
	Somewhat Approve	195	21
	Somewhat Disapprove	136	15
	Strongly Disapprove	316	34
	No Opinion	72	8
	Never Heard Of	3	0
	Approve	395	43
	Disapprove	452	49
	No Opinion	74	8
	Total	921	100

Congressman Chris Pappas Job Approval			
		Frequency	Percent
	Strongly Approve	86	18
	Somewhat Approve	120	24
	Somewhat Disapprove	60	12
	Strongly Disapprove	131	27
	No Opinion	82	17
	Never Heard Of	11	2
	Approve	206	42
	Disapprove	191	39
	No Opinion	94	19
	Total	490	100

Congresswoman Annie Kuster Job Approval			
		Frequency	Percent
	Strongly Approve	106	24
	Somewhat Approve	82	19
	Somewhat Disapprove	43	10
	Strongly Disapprove	134	31
	No Opinion	64	15
	Never Heard Of	2	0
	Approve	188	44
	Disapprove	177	41
	No Opinion	66	15
	Total	431	100

Please rank the below issues in order of importance to you:

Climate Change			
		Frequency	Percent
Rank	1	164	18
	2	126	14
	3	123	13
	4	84	9
	5	147	16
	6	277	30
	Total	921	100

Cost of Health Care			
		Frequency	Percent
Rank	1	180	20
	2	196	21
	3	219	24
	4	222	24
	5	79	9
	6	25	3
	Total	921	100

COVID-19			
		Frequency	Percent
Rank	1	118	13
	2	139	15
	3	151	16
	4	103	11
	5	240	26
	6	169	18
	Total	921	100

Please rank the below issues in order of importance to you:

Foreign Aggression			
		Frequency	Percent
Rank	1	71	8
	2	109	12
	3	201	22
	4	276	30
	5	179	19
	6	84	9
	Total	921	100

Government Spending			
		Frequency	Percent
Rank	1	206	22
	2	190	21
	3	126	14
	4	141	15
	5	145	16
	6	112	12
	Total	921	100

Illegal Immigration			
		Frequency	Percent
Rank	1	181	20
	2	161	17
	3	101	11
	4	95	10
	5	132	14
	6	252	27
	Total	921	100

Issue Ranked First			
		Frequency	Percent
	Government Spending	206	22
	Illegal Immigration	181	20
	Cost of Health Care	180	20
	Climate Change	164	18
	COVID-19	118	13
	Foreign Aggression	71	8
	Total	921	100

Issues Ranked by Mean		
		Mean
	Cost of Health Care	2.89
	Government Spending	3.18
	Illegal Immigration	3.64
	Foreign Aggression	3.69
	COVID-19	3.78
	Climate Change	3.82

How worried are you about inflation?			
		Frequency	Percent
	Very Worried	422	46
	Somewhat Worried	344	37
	Not Very Worried	127	14
	Not at all Worried	28	3
	Very/Somewhat	766	83
	Not Very/Not at all	155	17
	Total	921	100

How worried are you about the national debt?			
		Frequency	Percent
	Very Worried	432	47
	Somewhat Worried	281	31
	Not Very Worried	159	17
	Not at all Worried	49	5
	Very/Somewhat	714	77
	Not Very/Not at all	207	23
	Total	921	100

Do you trust cryptocurrency?			
		Frequency	Percent
	Yes	89	10
	No	537	58
	Unsure	295	32
	Total	921	100

How would you rate President Biden's handling of the economy?			
		Frequency	Percent
	Excellent	129	14
	Good	238	26
	Fair	107	12
	Poor	427	46
	Unsure	21	2
	Excellent/Good	366	40
	Fair/Poor	534	58
	Unsure	21	2
	Total	921	100

How would you rate President Biden's handling of the cost of energy?			
		Frequency	Percent
	Excellent	49	5
	Good	211	23
	Fair	117	13
	Poor	438	48
	Unsure	105	11
	Excellent/Good	260	28
	Fair/Poor	556	60
	Unsure	105	11
	Total	921	100

How would you rate President Biden's handling of race issues?			
		Frequency	Percent
	Excellent	134	15
	Good	239	26
	Fair	111	12
	Poor	410	44
	Unsure	27	3
	Excellent/Good	373	40
	Fair/Poor	521	57
	Unsure	27	3
	Total	921	100

How would you rate President Biden's handling of environmental issues?			
		Frequency	Percent
	Excellent	143	16
	Good	220	24
	Fair	161	18
	Poor	341	37
	Unsure	56	6
	Excellent/Good	363	39
	Fair/Poor	503	55
	Unsure	56	6
	Total	921	100

How would you rate President Biden's handling of the COVID-19 epidemic?			
		Frequency	Percent
	Excellent	360	39
	Good	111	12
	Fair	155	17
	Poor	282	31
	Unsure	12	1
	Excellent/Good	471	51
	Fair/Poor	437	47
	Unsure	12	1
	Total	921	100

How would you rate President Biden's handling of national security and foreign affairs?			
		Frequency	Percent
	Excellent	145	16
	Good	213	23
	Fair	99	11
	Poor	425	46
	Unsure	39	4
	Excellent/Good	358	39
	Fair/Poor	524	57
	Unsure	39	4
	Total	921	100

WEIGHTED TABLES

19

June 9-11, 2021

n = 921

New Hampshire Registered Voters

MoE +/- 3.2%

Would you say that things in our country are heading in the right direction, or have things gotten off on the wrong track?				
		Right Track	Wrong Track	Unsure
Gender	Female	38%	49%	13%
	Male	22%	71%	7%
Age	18-34	22%	62%	16%
	35-54	27%	63%	11%
	55-64	29%	63%	8%
	65+	41%	49%	10%
Education	High School or Less	24%	62%	14%
	Some College/Associates Degree	23%	66%	10%
	College Graduate	31%	61%	8%
	Graduate/Professional School	45%	45%	10%
Ideology	Very Conservative	1%	98%	1%
	Somewhat Conservative	15%	76%	9%
	Moderate	16%	68%	16%
	Somewhat Liberal	58%	29%	13%
	Very Liberal	58%	29%	13%
Top Issue	Climate Change	55%	29%	16%
	Foreign Aggression	23%	70%	7%
	Government Spending	7%	88%	5%
	Illegal Immigration	1%	95%	4%
	COVID-19	58%	26%	15%
	Cost of Health Care	48%	36%	16%
Party Registration	Democratic	63%	22%	15%
	Republican	2%	93%	5%
	Undeclared	25%	64%	11%
Party Identification	Democratic	58%	27%	15%
	Republican	4%	91%	5%
	Swing	18%	66%	15%
Congressional District	CD-1	27%	64%	10%
	CD-2	34%	55%	11%
Region	North Country/Lakes	25%	65%	10%
	Monadnock/Dartmouth	36%	59%	5%
	Merrimack Valley	34%	53%	13%
	Seacoast/Border	27%	64%	9%
Total		30%	59%	10%

Would you say that things in our state are heading in the right direction, or have things gotten off on the wrong track?				
		Right Track	Wrong Track	Unsure
Gender	Female	36%	40%	24%
	Male	48%	35%	18%
Age	18-34	39%	34%	27%
	35-54	41%	41%	18%
	55-64	38%	39%	23%
	65+	47%	33%	20%
Education	High School or Less	42%	32%	25%
	Some College/Associates Degree	41%	39%	20%
	College Graduate	46%	37%	18%
	Graduate/Professional School	37%	39%	24%
Ideology	Very Conservative	45%	42%	12%
	Somewhat Conservative	51%	29%	20%
	Moderate	39%	37%	24%
	Somewhat Liberal	41%	38%	20%
	Very Liberal	20%	48%	32%
Top Issue	Climate Change	36%	42%	23%
	Foreign Aggression	43%	26%	31%
	Government Spending	47%	36%	17%
	Illegal Immigration	44%	41%	14%
	COVID-19	39%	39%	22%
	Cost of Health Care	40%	33%	27%
Party Registration	Democratic	33%	43%	25%
	Republican	48%	36%	16%
	Undeclared	44%	35%	21%
Party Identification	Democratic	36%	39%	25%
	Republican	46%	36%	18%
	Swing	51%	31%	17%
Congressional District	CD-1	42%	36%	23%
	CD-2	42%	39%	19%
Region	North Country/Lakes	38%	44%	18%
	Monadnock/Dartmouth	29%	55%	15%
	Merrimack Valley	43%	34%	23%
	Seacoast/Border	44%	34%	22%
Total		42%	37%	21%

If the election for Congress were held today, for which candidate would you likely vote?

		Democratic	Republican	Other	Unsure
Gender	Female	54%	34%	3%	9%
	Male	33%	53%	4%	10%
Age	18-34	53%	35%	6%	6%
	35-54	40%	46%	4%	10%
	55-64	37%	49%	1%	13%
	65+	50%	38%	3%	9%
Education	High School or Less	38%	53%	3%	7%
	Some College/Associates Degree	34%	54%	3%	9%
	College Graduate	48%	37%	5%	10%
	Graduate/Professional School	58%	28%	2%	12%
Ideology	Very Conservative	1%	95%	1%	3%
	Somewhat Conservative	14%	71%	2%	13%
	Moderate	32%	34%	13%	21%
	Somewhat Liberal	84%	6%	3%	7%
	Very Liberal	93%	1%	2%	4%
Top Issue	Climate Change	86%	4%	1%	9%
	Foreign Aggression	23%	63%	4%	10%
	Government Spending	6%	72%	6%	15%
	Illegal Immigration	1%	90%	2%	7%
	COVID-19	80%	9%	1%	10%
	Cost of Health Care	77%	14%	3%	7%
Party Registration	Democratic	91%	3%	2%	4%
	Republican	3%	89%	1%	7%
	Undeclared	38%	41%	5%	16%
Party Identification	Democratic	89%	3%	1%	7%
	Republican	3%	86%	2%	9%
	Swing	23%	24%	23%	31%
Congressional District	CD-1	42%	43%	3%	12%
	CD-2	47%	44%	3%	7%
Region	North Country/Lakes	41%	46%	5%	7%
	Monadnock/Dartmouth	46%	45%	2%	6%
	Merrimack Valley	49%	42%	3%	7%
	Seacoast/Border	39%	43%	4%	15%
Total		44%	43%	3%	10%

Joe Biden Image				
		Favorable	Unfavorable	No Opinion
Gender	Female	61%	39%	1%
	Male	36%	63%	1%
Age	18-34	50%	48%	2%
	35-54	44%	55%	1%
	55-64	44%	55%	0%
	65+	59%	40%	0%
Education	High School or Less	42%	58%	
	Some College/Associates Degree	39%	60%	0%
	College Graduate	54%	44%	2%
	Graduate/Professional School	64%	36%	
Ideology	Very Conservative	1%	99%	
	Somewhat Conservative	22%	77%	1%
	Moderate	43%	54%	3%
	Somewhat Liberal	89%	11%	0%
	Very Liberal	93%	7%	
Top Issue	Climate Change	91%	9%	
	Foreign Aggression	28%	72%	
	Government Spending	14%	86%	1%
	Illegal Immigration	3%	96%	1%
	COVID-19	89%	10%	1%
	Cost of Health Care	78%	20%	2%
Party Registration	Democratic	92%	7%	0%
	Republican	6%	93%	1%
	Undeclared	46%	52%	1%
Party Identification	Democratic	93%	7%	0%
	Republican	6%	93%	1%
	Swing	44%	51%	4%
Congressional District	CD-1	47%	52%	1%
	CD-2	51%	48%	1%
Region	North Country/Lakes	45%	55%	
	Monadnock/Dartmouth	49%	51%	
	Merrimack Valley	54%	45%	1%
	Seacoast/Border	45%	54%	1%
Total		49%	50%	1%

Joe Biden Image							
		Strongly Favorable	S/W Favorable	S/W Unfav	Strongly Unfav	No Opinion	Never Heard Of
Gender	Female	36%	24%	3%	36%	1%	0%
	Male	19%	18%	10%	53%	1%	
Age	18-34	13%	37%	9%	38%	2%	
	35-54	21%	23%	8%	48%	1%	
	55-64	28%	16%	5%	50%	0%	
	65+	45%	14%	4%	36%		0%
Education	High School or Less	21%	20%	5%	54%		
	Some College/Associates Degree	19%	21%	5%	55%	0%	
	College Graduate	31%	23%	7%	38%	2%	0%
	Graduate/Professional School	44%	20%	8%	27%		
Ideology	Very Conservative	1%	1%	3%	95%		
	Somewhat Conservative	11%	10%	8%	70%	1%	
	Moderate	15%	27%	14%	41%	3%	
	Somewhat Liberal	55%	34%	5%	6%		0%
	Very Liberal	56%	38%	4%	2%		
Top Issue	Climate Change	50%	42%	4%	4%		
	Foreign Aggression	20%	10%	13%	58%		
	Government Spending	4%	9%	11%	75%	0%	0%
	Illegal Immigration	1%	3%	2%	94%	1%	
	COVID-19	62%	27%	3%	7%	1%	
	Cost of Health Care	43%	35%	8%	12%	2%	
Party Registration	Democratic	61%	31%	3%	5%	0%	
	Republican	2%	4%	8%	86%	1%	
	Undeclared	21%	25%	8%	44%	1%	0%
Party Identification	Democratic	57%	36%	4%	4%	0%	
	Republican	2%	5%	8%	85%	1%	
	Swing	13%	31%	16%	36%	3%	1%
Congressional District	CD-1	24%	23%	8%	44%	1%	
	CD-2	32%	19%	5%	43%	1%	0%
Region	North Country/Lakes	29%	16%	5%	50%		
	Monadnock/Dartmouth	33%	16%	9%	42%		
	Merrimack Valley	29%	24%	6%	39%	1%	0%
	Seacoast/Border	25%	20%	6%	48%	1%	
Total		28%	21%	6%	44%	1%	0%

Chris Sununu Image				
		Favorable	Unfavorable	No Opinion
Gender	Female	57%	41%	2%
	Male	77%	21%	2%
Age	18-34	60%	38%	2%
	35-54	66%	32%	3%
	55-64	71%	28%	0%
	65+	68%	30%	2%
Education	High School or Less	76%	22%	1%
	Some College/Associates Degree	72%	26%	2%
	College Graduate	63%	34%	3%
	Graduate/Professional School	57%	42%	1%
Ideology	Very Conservative	88%	10%	2%
	Somewhat Conservative	88%	10%	2%
	Moderate	68%	29%	3%
	Somewhat Liberal	54%	44%	3%
	Very Liberal	20%	79%	1%
Top Issue	Climate Change	41%	58%	1%
	Foreign Aggression	76%	23%	1%
	Government Spending	86%	13%	2%
	Illegal Immigration	89%	8%	3%
	COVID-19	53%	41%	6%
	Cost of Health Care	52%	48%	
Party Registration	Democratic	39%	61%	1%
	Republican	88%	10%	2%
	Undeclared	73%	24%	3%
Party Identification	Democratic	43%	55%	2%
	Republican	89%	9%	2%
	Swing	76%	21%	3%
Congressional District	CD-1	68%	29%	3%
	CD-2	66%	33%	1%
Region	North Country/Lakes	75%	25%	
	Monadnock/Dartmouth	57%	41%	2%
	Merrimack Valley	68%	30%	2%
	Seacoast/Border	66%	32%	2%
Total		67%	31%	2%

Chris Sununu Image							
		Strongly Favorable	S/W Favorable	S/W Unfav	Strongly Unfav	No Opinion	Never Heard Of
Gender	Female	23%	34%	24%	16%	2%	0%
	Male	39%	39%	13%	8%	1%	0%
Age	18-34	18%	42%	17%	20%	1%	1%
	35-54	32%	34%	20%	11%	3%	
	55-64	33%	38%	19%	10%	0%	
	65+	33%	34%	18%	12%	2%	0%
Education	High School or Less	42%	34%	10%	12%	1%	
	Some College/Associates Degree	30%	42%	17%	9%	1%	0%
	College Graduate	31%	32%	25%	9%	3%	0%
	Graduate/Professional School	22%	35%	21%	21%	1%	
Ideology	Very Conservative	47%	42%	10%		1%	1%
	Somewhat Conservative	51%	37%	8%	2%	2%	
	Moderate	28%	41%	17%	12%	3%	
	Somewhat Liberal	14%	40%	29%	15%	2%	0%
	Very Liberal	1%	19%	35%	44%	1%	
Top Issue	Climate Change	10%	31%	29%	29%	1%	
	Foreign Aggression	42%	34%	13%	10%	1%	
	Government Spending	50%	36%	11%	2%	1%	0%
	Illegal Immigration	49%	41%	7%	1%	2%	1%
	COVID-19	13%	41%	23%	18%	6%	
	Cost of Health Care	16%	36%	31%	18%		
Party Registration	Democratic	8%	31%	33%	28%	1%	
	Republican	55%	33%	10%	0%	2%	0%
	Undeclared	31%	42%	15%	9%	2%	0%
Party Identification	Democratic	8%	35%	31%	24%	2%	
	Republican	53%	37%	8%	1%	1%	0%
	Swing	32%	42%	8%	13%	3%	1%
Congressional District	CD-1	30%	38%	17%	13%	2%	0%
	CD-2	32%	34%	21%	12%	1%	0%
Region	North Country/Lakes	20%	54%	13%	13%		
	Monadnock/Dartmouth	29%	27%	16%	25%	2%	
	Merrimack Valley	31%	37%	20%	10%	2%	0%
	Seacoast/Border	33%	33%	20%	12%	2%	0%
Total		31%	36%	19%	12%	2%	0%

Jeanne Shaheen Image				
		Favorable	Unfavorable	No Opinion
Gender	Female	59%	34%	6%
	Male	38%	59%	3%
Age	18-34	46%	45%	9%
	35-54	44%	50%	6%
	55-64	47%	49%	4%
	65+	61%	38%	1%
Education	High School or Less	37%	56%	6%
	Some College/Associates Degree	40%	55%	5%
	College Graduate	55%	41%	5%
	Graduate/Professional School	66%	30%	3%
Ideology	Very Conservative	7%	90%	2%
	Somewhat Conservative	29%	67%	4%
	Moderate	43%	51%	5%
	Somewhat Liberal	84%	11%	5%
	Very Liberal	83%	10%	7%
Top Issue	Climate Change	87%	8%	6%
	Foreign Aggression	34%	59%	7%
	Government Spending	23%	73%	4%
	Illegal Immigration	10%	87%	3%
	COVID-19	81%	14%	5%
	Cost of Health Care	72%	23%	5%
Party Registration	Democratic	87%	9%	5%
	Republican	14%	82%	4%
	Undeclared	46%	49%	5%
Party Identification	Democratic	85%	10%	5%
	Republican	14%	81%	4%
	Swing	45%	49%	6%
Congressional District	CD-1	49%	46%	5%
	CD-2	50%	46%	4%
Region	North Country/Lakes	44%	51%	5%
	Monadnock/Dartmouth	51%	46%	3%
	Merrimack Valley	51%	44%	5%
	Seacoast/Border	49%	46%	4%
Total		49%	46%	5%

Jeanne Shaheen Image							
		Strongly Favorable	S/W Favorable	S/W Unfav	Strongly Unfav	No Opinion	Never Heard Of
Gender	Female	36%	24%	12%	23%	6%	0%
	Male	18%	21%	20%	39%	3%	
Age	18-34	15%	31%	22%	23%	9%	
	35-54	20%	24%	15%	35%	6%	
	55-64	27%	20%	15%	34%	4%	
	65+	44%	17%	13%	25%	0%	0%
Education	High School or Less	18%	19%	21%	36%	6%	
	Some College/Associates Degree	22%	18%	17%	39%	4%	0%
	College Graduate	28%	27%	14%	26%	5%	
	Graduate/Professional School	41%	25%	12%	18%	3%	
Ideology	Very Conservative	1%	7%	18%	72%	2%	
	Somewhat Conservative	12%	17%	23%	43%	4%	0%
	Moderate	17%	27%	17%	34%	5%	
	Somewhat Liberal	54%	29%	8%	3%	5%	
	Very Liberal	49%	35%	8%	1%	7%	
Top Issue	Climate Change	45%	42%	5%	3%	5%	
	Foreign Aggression	16%	17%	27%	33%	7%	
	Government Spending	5%	17%	20%	54%	4%	
	Illegal Immigration	3%	7%	22%	66%	3%	
	COVID-19	53%	28%	8%	6%	3%	1%
	Cost of Health Care	48%	24%	15%	8%	5%	
Party Registration	Democratic	58%	28%	7%	2%	5%	
	Republican	4%	10%	23%	59%	3%	0%
	Undeclared	20%	26%	17%	32%	5%	
Party Identification	Democratic	54%	31%	7%	3%	5%	
	Republican	3%	11%	24%	57%	4%	0%
	Swing	13%	32%	17%	32%	6%	
Congressional District	CD-1	22%	27%	16%	30%	5%	0%
	CD-2	33%	17%	16%	30%	4%	
Region	North Country/Lakes	22%	22%	16%	35%	5%	
	Monadnock/Dartmouth	43%	8%	9%	37%	3%	
	Merrimack Valley	28%	23%	18%	26%	5%	
	Seacoast/Border	24%	25%	15%	31%	4%	0%
Total		27%	22%	16%	30%	5%	0%

Maggie Hassan Image				
		Favorable	Unfavorable	No Opinion
Gender	Female	55%	38%	6%
	Male	35%	60%	5%
Age	18-34	45%	43%	12%
	35-54	38%	55%	7%
	55-64	42%	53%	5%
	65+	59%	40%	1%
Education	High School or Less	38%	58%	3%
	Some College/Associates Degree	36%	57%	6%
	College Graduate	49%	45%	6%
	Graduate/Professional School	61%	33%	6%
Ideology	Very Conservative	5%	90%	5%
	Somewhat Conservative	22%	74%	4%
	Moderate	35%	58%	7%
	Somewhat Liberal	82%	11%	7%
	Very Liberal	85%	9%	7%
Top Issue	Climate Change	82%	9%	9%
	Foreign Aggression	28%	62%	10%
	Government Spending	14%	81%	5%
	Illegal Immigration	6%	90%	4%
	COVID-19	80%	16%	4%
	Cost of Health Care	73%	23%	4%
Party Registration	Democratic	86%	10%	4%
	Republican	10%	84%	6%
	Undeclared	40%	53%	7%
Party Identification	Democratic	83%	11%	6%
	Republican	10%	85%	5%
	Swing	36%	57%	7%
Congressional District	CD-1	45%	49%	6%
	CD-2	47%	48%	5%
Region	North Country/Lakes	44%	51%	5%
	Monadnock/Dartmouth	43%	53%	3%
	Merrimack Valley	52%	42%	6%
	Seacoast/Border	41%	53%	6%
Total		46%	49%	6%

Maggie Hassan Image							
		Strongly Favorable	S/W Favorable	S/W Unfav	Strongly Unfav	No Opinion	Never Heard Of
Gender	Female	30%	25%	12%	27%	5%	1%
	Male	12%	23%	17%	43%	4%	1%
Age	18-34	14%	31%	10%	33%	10%	1%
	35-54	11%	27%	16%	38%	6%	1%
	55-64	24%	17%	13%	40%	4%	1%
	65+	35%	24%	14%	26%	1%	
Education	High School or Less	18%	21%	19%	40%	3%	
	Some College/Associates Degree	15%	22%	14%	44%	5%	2%
	College Graduate	22%	27%	15%	30%	5%	1%
	Graduate/Professional School	33%	28%	10%	24%	6%	
Ideology	Very Conservative	2%	3%	14%	77%	4%	1%
	Somewhat Conservative	7%	15%	21%	53%	3%	0%
	Moderate	14%	22%	23%	35%	7%	
	Somewhat Liberal	38%	44%	7%	4%	5%	2%
	Very Liberal	50%	35%	6%	3%	7%	
Top Issue	Climate Change	35%	47%	4%	4%	7%	2%
	Foreign Aggression	13%	15%	23%	39%	8%	1%
	Government Spending	2%	12%	22%	59%	4%	0%
	Illegal Immigration	1%	4%	14%	76%	3%	1%
	COVID-19	45%	36%	8%	8%	3%	1%
	Cost of Health Care	39%	34%	14%	9%	4%	
Party Registration	Democratic	49%	37%	7%	3%	4%	0%
	Republican	3%	7%	20%	64%	5%	0%
	Undeclared	13%	27%	16%	37%	5%	1%
Party Identification	Democratic	42%	41%	7%	4%	5%	1%
	Republican	2%	8%	20%	65%	5%	1%
	Swing	9%	27%	23%	34%	6%	1%
Congressional District	CD-1	17%	28%	16%	34%	5%	1%
	CD-2	26%	21%	13%	36%	4%	1%
Region	North Country/Lakes	21%	22%	11%	40%	5%	
	Monadnock/Dartmouth	33%	11%	15%	38%	3%	
	Merrimack Valley	23%	28%	14%	29%	6%	1%
	Seacoast/Border	17%	24%	15%	39%	4%	1%
Total		21%	24%	14%	35%	5%	1%

Chris Pappas Image				
		Favorable	Unfavorable	No Opinion
Gender	Female	54%	33%	13%
	Male	38%	44%	19%
Age	18-34	39%	31%	30%
	35-54	44%	40%	16%
	55-64	40%	48%	12%
	65+	56%	32%	11%
Education	High School or Less	47%	38%	15%
	Some College/Associates Degree	35%	45%	20%
	College Graduate	45%	37%	18%
	Graduate/Professional School	61%	31%	7%
Ideology	Very Conservative	12%	74%	14%
	Somewhat Conservative	29%	51%	19%
	Moderate	36%	41%	23%
	Somewhat Liberal	78%	13%	9%
	Very Liberal	75%	12%	13%
Top Issue	Climate Change	75%	12%	13%
	Foreign Aggression	43%	41%	16%
	Government Spending	20%	61%	20%
	Illegal Immigration	13%	66%	21%
	COVID-19	78%	15%	6%
	Cost of Health Care	68%	18%	14%
Party Registration	Democratic	78%	14%	9%
	Republican	21%	59%	20%
	Undeclared	40%	42%	18%
Party Identification	Democratic	76%	12%	12%
	Republican	17%	63%	20%
	Swing	44%	42%	13%
Region	North Country/Lakes	40%	48%	12%
	Monadnock/Dartmouth	20%	80%	
	Merrimack Valley	50%	35%	15%
	Seacoast/Border	45%	37%	18%
Total		46%	39%	16%

Chris Pappas Image							
		Strongly Favorable	S/W Favorable	S/W Unfav	Strongly Unfav	No Opinion	Never Heard Of
Gender	Female	24%	29%	10%	23%	12%	1%
	Male	13%	24%	10%	33%	15%	4%
Age	18-34	15%	24%	11%	19%	22%	9%
	35-54	17%	27%	13%	28%	14%	1%
	55-64	13%	28%	8%	40%	11%	1%
	65+	29%	28%	8%	24%	10%	2%
Education	High School or Less	11%	36%	7%	32%	10%	5%
	Some College/Associates Degree	15%	20%	13%	32%	17%	4%
	College Graduate	18%	26%	9%	28%	17%	1%
	Graduate/Professional School	33%	30%	10%	21%	7%	
Ideology	Very Conservative	3%	11%	12%	62%	11%	3%
	Somewhat Conservative	6%	23%	13%	39%	18%	2%
	Moderate	10%	25%	9%	31%	19%	4%
	Somewhat Liberal	34%	44%	8%	5%	9%	
	Very Liberal	51%	24%	7%	4%	9%	4%
Top Issue	Climate Change	26%	48%	10%	4%	11%	2%
	Foreign Aggression	9%	34%	25%	16%	7%	9%
	Government Spending	2%	17%	10%	51%	18%	2%
	Illegal Immigration	2%	10%	12%	55%	16%	4%
	COVID-19	49%	29%	6%	9%	6%	
	Cost of Health Care	35%	33%	5%	13%	14%	
Party Registration	Democratic	42%	36%	6%	8%	9%	
	Republican	2%	18%	8%	51%	15%	5%
	Undeclared	14%	26%	14%	27%	16%	2%
Party Identification	Democratic	38%	38%	6%	6%	11%	1%
	Republican	2%	15%	13%	50%	16%	4%
	Swing	13%	31%	18%	24%	13%	
Region	North Country/Lakes	17%	24%	14%	33%	9%	3%
	Monadnock/Dartmouth	20%			80%		
	Merrimack Valley	20%	30%	10%	24%	13%	2%
	Seacoast/Border	19%	27%	9%	28%	15%	2%
Total		19%	27%	10%	28%	14%	2%

Annie Kuster Image				
		Favorable	Unfavorable	No Opinion
Gender	Female	53%	33%	13%
	Male	33%	55%	12%
Age	18-34	33%	41%	26%
	35-54	40%	44%	16%
	55-64	39%	53%	8%
	65+	61%	34%	5%
Education	High School or Less	23%	66%	11%
	Some College/Associates Degree	38%	54%	9%
	College Graduate	52%	36%	12%
	Graduate/Professional School	56%	23%	20%
Ideology	Very Conservative		84%	16%
	Somewhat Conservative	19%	75%	5%
	Moderate	45%	43%	11%
	Somewhat Liberal	73%	7%	20%
	Very Liberal	84%	6%	10%
Top Issue	Climate Change	77%	2%	21%
	Foreign Aggression	26%	63%	11%
	Government Spending	8%	75%	17%
	Illegal Immigration	3%	93%	3%
	COVID-19	79%	9%	11%
	Cost of Health Care	72%	18%	10%
Party Registration	Democratic	84%	4%	13%
	Republican	7%	83%	10%
	Undeclared	38%	48%	14%
Party Identification	Democratic	82%	3%	14%
	Republican	6%	82%	12%
	Swing	28%	68%	4%
Region	North Country/Lakes	43%	48%	9%
	Monadnock/Dartmouth	48%	38%	14%
	Merrimack Valley	48%	40%	12%
	Seacoast/Border	30%	56%	14%
Total		44%	43%	13%

Annie Kuster Image							
		Strongly Favorable	S/W Favorable	S/W Unfav	Strongly Unfav	No Opinion	Never Heard Of
Gender	Female	27%	26%	8%	25%	11%	2%
	Male	14%	19%	12%	43%	10%	2%
Age	18-34	9%	24%	12%	28%	22%	4%
	35-54	17%	24%	7%	37%	14%	2%
	55-64	22%	18%	12%	42%	4%	3%
	65+	33%	28%	11%	23%	5%	
Education	High School or Less	11%	11%	8%	57%	8%	3%
	Some College/Associates Degree	14%	23%	11%	43%	7%	2%
	College Graduate	26%	26%	12%	24%	11%	1%
	Graduate/Professional School	32%	26%	8%	15%	16%	3%
Ideology	Very Conservative			13%	71%	13%	3%
	Somewhat Conservative	3%	16%	20%	55%	4%	2%
	Moderate	18%	27%	9%	34%	11%	
	Somewhat Liberal	39%	34%	3%	3%	17%	3%
	Very Liberal	49%	35%	1%	4%	9%	1%
Top Issue	Climate Change	30%	46%	3%		16%	5%
	Foreign Aggression	11%	19%	11%	48%	4%	7%
	Government Spending	1%	7%	19%	56%	15%	1%
	Illegal Immigration	1%	2%	17%	76%	3%	1%
	COVID-19	50%	30%	6%	4%	9%	2%
	Cost of Health Care	38%	34%	4%	14%	10%	
Party Registration	Democratic	46%	38%	1%	3%	12%	1%
	Republican	3%	4%	23%	59%	9%	2%
	Undeclared	14%	25%	9%	39%	11%	4%
Party Identification	Democratic	40%	42%	2%	2%	12%	2%
	Republican	2%	5%	19%	63%	10%	2%
	Swing	12%	15%	15%	54%	4%	
Region	North Country/Lakes	32%	14%	9%	36%	9%	
	Monadnock/Dartmouth	20%	29%	8%	30%	14%	
	Merrimack Valley	22%	26%	13%	27%	12%	0%
	Seacoast/Border	17%	13%	6%	51%	3%	9%
Total		21%	23%	10%	33%	10%	2%

President Joe Biden Job Approval				
		Approve	Disapprove	No Opinion
Gender	Female	60%	38%	2%
	Male	38%	62%	1%
Age	18-34	50%	46%	3%
	35-54	44%	55%	1%
	55-64	44%	55%	2%
	65+	61%	39%	
Education	High School or Less	39%	59%	2%
	Some College/Associates Degree	40%	59%	1%
	College Graduate	54%	45%	2%
	Graduate/Professional School	66%	34%	
Ideology	Very Conservative	1%	99%	
	Somewhat Conservative	22%	76%	1%
	Moderate	43%	56%	1%
	Somewhat Liberal	90%	9%	1%
	Very Liberal	92%	4%	4%
Top Issue	Climate Change	91%	9%	1%
	Foreign Aggression	30%	70%	
	Government Spending	14%	84%	1%
	Illegal Immigration	3%	96%	1%
	COVID-19	90%	10%	
	Cost of Health Care	78%	18%	4%
Party Registration	Democratic	91%	8%	1%
	Republican	7%	93%	1%
	Undeclared	48%	50%	2%
Party Identification	Democratic	92%	7%	1%
	Republican	7%	92%	1%
	Swing	47%	49%	4%
Congressional District	CD-1	48%	51%	1%
	CD-2	51%	48%	1%
Region	North Country/Lakes	44%	56%	
	Monadnock/Dartmouth	53%	47%	
	Merrimack Valley	53%	45%	2%
	Seacoast/Border	46%	53%	1%
Total		49%	49%	1%

President Joe Biden Job Approval							
		Strongly Approve	S/W Approve	S/W Disapp	Strongly Disapp	No Opinion	Never Heard Of
Gender	Female	36%	24%	3%	35%	2%	
	Male	19%	18%	7%	54%	1%	
Age	18-34	14%	36%	8%	38%	3%	
	35-54	22%	22%	6%	49%	1%	
	55-64	29%	15%	4%	51%	2%	
	65+	45%	16%	3%	37%		
Education	High School or Less	20%	19%	6%	53%	2%	
	Some College/Associates Degree	19%	20%	3%	56%	1%	
	College Graduate	34%	19%	5%	39%	2%	
	Graduate/Professional School	41%	25%	6%	28%		
Ideology	Very Conservative	1%	1%	3%	95%		
	Somewhat Conservative	12%	10%	6%	71%	1%	
	Moderate	17%	26%	12%	44%	1%	
	Somewhat Liberal	57%	33%	3%	6%	1%	
	Very Liberal	52%	40%	2%	2%	4%	
Top Issue	Climate Change	53%	38%	5%	4%	1%	
	Foreign Aggression	20%	10%	17%	54%		
	Government Spending	4%	11%	6%	78%	1%	
	Illegal Immigration	1%	2%	2%	94%	1%	
	COVID-19	60%	30%	3%	8%		
	Cost of Health Care	44%	35%	4%	13%	4%	
Party Registration	Democratic	61%	31%	3%	5%	1%	
	Republican	2%	4%	5%	88%	1%	
	Undeclared	22%	25%	6%	44%	2%	
Party Identification	Democratic	58%	34%	3%	4%	1%	
	Republican	2%	5%	6%	86%	1%	
	Swing	10%	37%	7%	41%	4%	
Congressional District	CD-1	25%	23%	4%	47%	1%	
	CD-2	32%	19%	6%	42%	1%	
Region	North Country/Lakes	28%	17%	4%	51%		
	Monadnock/Dartmouth	33%	21%	7%	40%		
	Merrimack Valley	32%	21%	4%	40%	2%	
	Seacoast/Border	24%	22%	5%	48%	1%	
Total		28%	21%	5%	45%	1%	

Governor Chris Sununu Job Approval				
		Approve	Disapprove	No Opinion
Gender	Female	59%	39%	1%
	Male	77%	21%	2%
Age	18-34	63%	34%	3%
	35-54	68%	29%	2%
	55-64	72%	27%	1%
	65+	67%	32%	1%
Education	High School or Less	73%	27%	
	Some College/Associates Degree	74%	24%	2%
	College Graduate	64%	33%	3%
	Graduate/Professional School	59%	40%	1%
Ideology	Very Conservative	88%	10%	2%
	Somewhat Conservative	89%	11%	1%
	Moderate	69%	29%	3%
	Somewhat Liberal	57%	42%	1%
	Very Liberal	23%	73%	4%
Top Issue	Climate Change	46%	52%	2%
	Foreign Aggression	79%	19%	1%
	Government Spending	86%	13%	2%
	Illegal Immigration	90%	9%	2%
	COVID-19	56%	43%	1%
	Cost of Health Care	50%	48%	2%
Party Registration	Democratic	39%	58%	2%
	Republican	89%	10%	1%
	Undeclared	75%	23%	2%
Party Identification	Democratic	45%	53%	2%
	Republican	90%	9%	1%
	Swing	74%	21%	4%
Congressional District	CD-1	70%	28%	2%
	CD-2	66%	32%	2%
Region	North Country/Lakes	72%	28%	
	Monadnock/Dartmouth	55%	43%	1%
	Merrimack Valley	70%	28%	2%
	Seacoast/Border	68%	30%	2%
Total		68%	30%	2%

Governor Chris Sununu Job Approval							
		Strongly Approve	S/W Approve	S/W Disapp	Strongly Disapp	No Opinion	Never Heard Of
Gender	Female	21%	38%	25%	14%	1%	
	Male	38%	39%	13%	8%	2%	0%
Age	18-34	20%	43%	20%	15%	2%	1%
	35-54	30%	38%	18%	12%	2%	
	55-64	30%	42%	17%	10%	1%	
	65+	34%	33%	22%	10%	1%	
Education	High School or Less	44%	29%	12%	15%		
	Some College/Associates Degree	30%	45%	16%	7%	2%	0%
	College Graduate	29%	36%	22%	11%	3%	
	Graduate/Professional School	19%	40%	25%	15%	1%	
Ideology	Very Conservative	46%	41%	6%	5%	1%	1%
	Somewhat Conservative	48%	40%	9%	2%	1%	
	Moderate	28%	41%	21%	8%	3%	
	Somewhat Liberal	13%	44%	30%	12%	1%	
	Very Liberal	1%	21%	33%	40%	4%	
Top Issue	Climate Change	10%	36%	33%	19%	2%	
	Foreign Aggression	51%	28%	10%	10%	1%	
	Government Spending	42%	43%	9%	3%	2%	
	Illegal Immigration	46%	44%	6%	3%	1%	1%
	COVID-19	15%	42%	27%	15%	1%	
	Cost of Health Care	17%	33%	29%	19%	2%	
Party Registration	Democratic	8%	32%	35%	24%	2%	
	Republican	53%	36%	7%	2%	1%	0%
	Undeclared	29%	45%	16%	8%	2%	
Party Identification	Democratic	9%	37%	32%	21%	2%	
	Republican	51%	39%	7%	2%	1%	0%
	Swing	27%	46%	15%	7%	4%	
Congressional District	CD-1	28%	41%	17%	11%	2%	0%
	CD-2	31%	35%	21%	11%	2%	
Region	North Country/Lakes	20%	52%	21%	7%		
	Monadnock/Dartmouth	25%	30%	26%	18%	1%	
	Merrimack Valley	31%	39%	17%	11%	2%	
	Seacoast/Border	32%	37%	19%	11%	1%	0%
Total		29%	39%	19%	11%	2%	0%

Senator Jeanne Shaheen Job Approval				
		Approve	Disapprove	No Opinion
Gender	Female	56%	34%	9%
	Male	37%	57%	5%
Age	18-34	41%	44%	15%
	35-54	41%	51%	8%
	55-64	46%	49%	5%
	65+	60%	36%	4%
Education	High School or Less	33%	54%	14%
	Some College/Associates Degree	41%	54%	6%
	College Graduate	50%	43%	7%
	Graduate/Professional School	65%	29%	6%
Ideology	Very Conservative	6%	92%	1%
	Somewhat Conservative	29%	65%	6%
	Moderate	39%	47%	14%
	Somewhat Liberal	80%	13%	7%
	Very Liberal	81%	9%	10%
Top Issue	Climate Change	82%	9%	9%
	Foreign Aggression	38%	55%	7%
	Government Spending	18%	74%	7%
	Illegal Immigration	12%	85%	4%
	COVID-19	75%	18%	8%
	Cost of Health Care	70%	21%	9%
Party Registration	Democratic	84%	9%	7%
	Republican	16%	80%	4%
	Undeclared	42%	49%	9%
Party Identification	Democratic	80%	10%	10%
	Republican	16%	80%	4%
	Swing	39%	50%	11%
Congressional District	CD-1	44%	48%	8%
	CD-2	51%	42%	6%
Region	North Country/Lakes	39%	53%	8%
	Monadnock/Dartmouth	54%	42%	4%
	Merrimack Valley	50%	42%	8%
	Seacoast/Border	45%	48%	7%
Total		47%	45%	7%

Senator Jeanne Shaheen Job Approval							
		Strongly Approve	S/W Approve	S/W Disapp	Strongly Disapp	No Opinion	Never Heard Of
Gender	Female	34%	23%	11%	24%	9%	
	Male	17%	21%	18%	39%	5%	
Age	18-34	14%	28%	19%	24%	15%	
	35-54	17%	24%	14%	36%	8%	
	55-64	27%	19%	15%	35%	5%	
	65+	42%	18%	12%	24%	4%	
Education	High School or Less	17%	16%	11%	42%	14%	
	Some College/Associates Degree	20%	21%	17%	37%	6%	
	College Graduate	27%	23%	17%	26%	7%	
	Graduate/Professional School	38%	26%	10%	19%	6%	
Ideology	Very Conservative	1%	5%	17%	75%	1%	
	Somewhat Conservative	10%	19%	20%	45%	6%	
	Moderate	17%	22%	16%	31%	14%	
	Somewhat Liberal	50%	30%	10%	3%	7%	
	Very Liberal	49%	31%	7%	1%	10%	
Top Issue	Climate Change	44%	39%	6%	3%	9%	
	Foreign Aggression	15%	24%	19%	35%	7%	
	Government Spending	3%	16%	22%	52%	7%	
	Illegal Immigration	1%	10%	16%	69%	4%	
	COVID-19	53%	21%	13%	5%	8%	
	Cost of Health Care	45%	24%	12%	9%	9%	
Party Registration	Democratic	56%	28%	7%	2%	7%	
	Republican	3%	13%	18%	62%	4%	
	Undeclared	19%	23%	18%	31%	9%	
Party Identification	Democratic	50%	30%	8%	2%	10%	
	Republican	2%	13%	20%	60%	4%	
	Swing	14%	23%	19%	32%	12%	
Congressional District	CD-1	21%	23%	17%	31%	8%	
	CD-2	31%	20%	12%	31%	6%	
Region	North Country/Lakes	20%	19%	16%	37%	8%	
	Monadnock/Dartmouth	37%	17%	8%	34%	4%	
	Merrimack Valley	26%	24%	16%	26%	8%	
	Seacoast/Border	23%	22%	15%	33%	7%	
Total		25%	22%	15%	31%	7%	

Senator Maggie Hassan Job Approval				
		Approve	Disapprove	No Opinion
Gender	Female	52%	39%	10%
	Male	33%	60%	6%
Age	18-34	42%	43%	15%
	35-54	35%	56%	9%
	55-64	41%	53%	7%
	65+	55%	41%	4%
Education	High School or Less	36%	55%	8%
	Some College/Associates Degree	34%	59%	8%
	College Graduate	45%	46%	9%
	Graduate/Professional School	59%	34%	7%
Ideology	Very Conservative	4%	94%	2%
	Somewhat Conservative	20%	73%	7%
	Moderate	34%	54%	12%
	Somewhat Liberal	76%	13%	10%
	Very Liberal	81%	9%	10%
Top Issue	Climate Change	78%	7%	15%
	Foreign Aggression	32%	62%	6%
	Government Spending	12%	81%	7%
	Illegal Immigration	6%	91%	3%
	COVID-19	76%	15%	8%
	Cost of Health Care	66%	25%	9%
Party Registration	Democratic	82%	11%	7%
	Republican	10%	86%	4%
	Undeclared	37%	52%	11%
Party Identification	Democratic	77%	12%	11%
	Republican	10%	86%	4%
	Swing	33%	51%	16%
Congressional District	CD-1	41%	50%	9%
	CD-2	45%	48%	7%
Region	North Country/Lakes	41%	48%	10%
	Monadnock/Dartmouth	43%	53%	3%
	Merrimack Valley	47%	43%	11%
	Seacoast/Border	40%	54%	6%
Total		43%	49%	8%

Senator Maggie Hassan Job Approval							
		Strongly Approve	S/W Approve	S/W Disapp	Strongly Disapp	No Opinion	Never Heard Of
Gender	Female	30%	21%	14%	25%	10%	0%
	Male	12%	21%	16%	45%	6%	0%
Age	18-34	12%	30%	10%	33%	15%	
	35-54	14%	22%	19%	37%	9%	0%
	55-64	25%	16%	11%	42%	7%	
	65+	35%	20%	17%	24%	3%	1%
Education	High School or Less	17%	19%	14%	41%	8%	
	Some College/Associates Degree	16%	18%	18%	41%	7%	1%
	College Graduate	23%	22%	14%	32%	9%	
	Graduate/Professional School	33%	27%	11%	22%	7%	
Ideology	Very Conservative	1%	4%	23%	70%	2%	
	Somewhat Conservative	7%	14%	18%	54%	6%	0%
	Moderate	16%	18%	19%	35%	12%	
	Somewhat Liberal	41%	35%	8%	6%	10%	1%
	Very Liberal	47%	33%	7%	2%	10%	
Top Issue	Climate Change	37%	41%	5%	1%	15%	
	Foreign Aggression	11%	21%	21%	41%	4%	1%
	Government Spending	2%	10%	18%	63%	6%	1%
	Illegal Immigration	1%	5%	19%	72%	3%	
	COVID-19	46%	31%	8%	8%	8%	
	Cost of Health Care	39%	26%	16%	9%	9%	
Party Registration	Democratic	50%	32%	8%	3%	7%	
	Republican	3%	8%	21%	65%	4%	
	Undeclared	14%	22%	16%	36%	11%	1%
Party Identification	Democratic	44%	34%	9%	3%	10%	0%
	Republican	2%	8%	21%	64%	4%	0%
	Swing	10%	23%	11%	40%	16%	
Congressional District	CD-1	17%	24%	16%	34%	9%	0%
	CD-2	28%	17%	13%	34%	7%	0%
Region	North Country/Lakes	19%	22%	13%	35%	10%	
	Monadnock/Dartmouth	29%	14%	20%	34%	3%	
	Merrimack Valley	25%	21%	13%	30%	10%	1%
	Seacoast/Border	17%	22%	16%	38%	6%	
Total		22%	21%	15%	34%	8%	0%

Congressman Chris Pappas Job Approval				
		Approve	Disapprove	No Opinion
Gender	Female	48%	33%	19%
	Male	36%	44%	19%
Age	18-34	39%	32%	29%
	35-54	42%	39%	19%
	55-64	33%	48%	19%
	65+	54%	33%	13%
Education	High School or Less	33%	45%	23%
	Some College/Associates Degree	34%	43%	22%
	College Graduate	43%	37%	20%
	Graduate/Professional School	61%	29%	10%
Ideology	Very Conservative	6%	77%	17%
	Somewhat Conservative	26%	53%	22%
	Moderate	28%	39%	33%
	Somewhat Liberal	78%	13%	10%
	Very Liberal	72%	10%	18%
Top Issue	Climate Change	69%	12%	19%
	Foreign Aggression	36%	41%	23%
	Government Spending	18%	61%	21%
	Illegal Immigration	13%	69%	18%
	COVID-19	74%	14%	12%
	Cost of Health Care	61%	18%	21%
Party Registration	Democratic	78%	11%	11%
	Republican	18%	61%	20%
	Undeclared	34%	43%	23%
Party Identification	Democratic	74%	12%	15%
	Republican	15%	65%	20%
	Swing	27%	38%	36%
Region	North Country/Lakes	29%	47%	24%
	Monadnock/Dartmouth	20%	80%	
	Merrimack Valley	46%	34%	20%
	Seacoast/Border	44%	38%	18%
Total		42%	39%	19%

Congressman Chris Pappas Job Approval							
		Strongly Approve	S/W Approve	S/W Disapp	Strongly Disapp	No Opinion	Never Heard Of
Gender	Female	22%	25%	13%	21%	18%	1%
	Male	13%	23%	12%	33%	16%	4%
Age	18-34	19%	19%	13%	20%	20%	9%
	35-54	13%	28%	13%	26%	18%	1%
	55-64	10%	22%	12%	37%	18%	1%
	65+	30%	24%	11%	21%	12%	2%
Education	High School or Less	9%	23%	15%	30%	18%	5%
	Some College/Associates Degree	14%	20%	14%	30%	19%	4%
	College Graduate	16%	27%	11%	26%	19%	1%
	Graduate/Professional School	31%	29%	8%	21%	10%	
Ideology	Very Conservative	1%	6%	19%	57%	13%	3%
	Somewhat Conservative	5%	21%	15%	37%	20%	2%
	Moderate	12%	16%	9%	30%	28%	4%
	Somewhat Liberal	34%	43%	8%	4%	10%	
	Very Liberal	43%	28%	6%	4%	13%	4%
Top Issue	Climate Change	33%	36%	8%	4%	17%	2%
	Foreign Aggression	9%	27%	23%	18%	14%	9%
	Government Spending	2%	15%	13%	48%	20%	2%
	Illegal Immigration	2%	11%	18%	51%	14%	4%
	COVID-19	40%	34%	5%	9%	12%	
	Cost of Health Care	29%	32%	7%	11%	21%	
Party Registration	Democratic	40%	38%	5%	6%	11%	
	Republican	2%	16%	12%	49%	15%	5%
	Undeclared	13%	21%	17%	26%	21%	2%
Party Identification	Democratic	36%	38%	7%	5%	13%	1%
	Republican	1%	14%	17%	48%	16%	4%
	Swing	14%	14%	14%	23%	36%	
Region	North Country/Lakes	17%	12%	12%	36%	21%	3%
	Monadnock/Dartmouth	20%			80%		
	Merrimack Valley	19%	28%	11%	22%	19%	2%
	Seacoast/Border	17%	27%	13%	25%	15%	3%
Total		18%	24%	12%	27%	17%	2%

Congresswoman Annie Kuster Job Approval				
		Approve	Disapprove	No Opinion
Gender	Female	53%	28%	18%
	Male	32%	56%	12%
Age	18-34	27%	36%	36%
	35-54	40%	45%	15%
	55-64	43%	45%	12%
	65+	59%	35%	6%
Education	High School or Less	27%	58%	15%
	Some College/Associates Degree	37%	51%	11%
	College Graduate	52%	34%	14%
	Graduate/Professional School	53%	23%	25%
Ideology	Very Conservative	1%	86%	13%
	Somewhat Conservative	22%	71%	7%
	Moderate	42%	44%	13%
	Somewhat Liberal	73%	4%	23%
	Very Liberal	78%	1%	21%
Top Issue	Climate Change	69%	1%	30%
	Foreign Aggression	26%	70%	4%
	Government Spending	8%	75%	16%
	Illegal Immigration	7%	86%	7%
	COVID-19	81%	7%	11%
	Cost of Health Care	71%	13%	17%
Party Registration	Democratic	81%	1%	18%
	Republican	8%	80%	12%
	Undeclared	38%	47%	15%
Party Identification	Democratic	79%	1%	19%
	Republican	8%	80%	12%
	Swing	28%	68%	4%
Region	North Country/Lakes	43%	48%	9%
	Monadnock/Dartmouth	47%	38%	16%
	Merrimack Valley	49%	35%	16%
	Seacoast/Border	25%	61%	14%
Total		43%	41%	15%

Congresswoman Annie Kuster Job Approval							
		Strongly Approve	S/W Approve	S/W Disapp	Strongly Disapp	No Opinion	Never Heard Of
Gender	Female	33%	20%	7%	21%	18%	0%
	Male	15%	18%	13%	43%	11%	1%
Age	18-34	12%	15%	8%	30%	33%	2%
	35-54	19%	21%	14%	31%	15%	1%
	55-64	23%	19%	8%	37%	12%	
	65+	41%	19%	8%	27%	6%	
Education	High School or Less	16%	11%	6%	52%	15%	
	Some College/Associates Degree	20%	17%	12%	39%	11%	
	College Graduate	28%	24%	10%	24%	14%	
	Graduate/Professional School	32%	20%	8%	15%	23%	2%
Ideology	Very Conservative		1%	11%	73%	13%	1%
	Somewhat Conservative	5%	16%	20%	52%	7%	
	Moderate	24%	18%	11%	33%	13%	
	Somewhat Liberal	44%	29%	3%	3%	21%	1%
	Very Liberal	53%	25%	1%		21%	
Top Issue	Climate Change	30%	40%	1%		30%	
	Foreign Aggression	11%	14%	29%	43%	4%	
	Government Spending	1%	7%	17%	58%	15%	1%
	Illegal Immigration	1%	7%	17%	69%	7%	
	COVID-19	58%	25%	4%	4%	8%	2%
	Cost of Health Care	48%	22%	3%	10%	16%	
Party Registration	Democratic	54%	27%	1%	1%	17%	1%
	Republican	3%	5%	15%	64%	12%	1%
	Undeclared	16%	22%	14%	33%	15%	
Party Identification	Democratic	48%	32%	1%	0%	19%	0%
	Republican	2%	6%	18%	61%	12%	1%
	Swing	13%	17%	17%	50%	4%	
Region	North Country/Lakes	35%	9%	9%	39%	9%	
	Monadnock/Dartmouth	28%	18%	11%	26%	16%	
	Merrimack Valley	24%	25%	7%	27%	16%	
	Seacoast/Border	17%	8%	16%	45%	11%	2%
Total		24%	19%	10%	31%	15%	0%

Climate Change Issue Rank							
		1	2	3	4	5	6
Gender	Female	21%	16%	14%	10%	14%	24%
	Male	14%	11%	13%	8%	18%	37%
Age	18-34	23%	14%	15%	11%	19%	18%
	35-54	16%	14%	10%	7%	19%	34%
	55-64	15%	13%	12%	9%	12%	40%
	65+	19%	14%	18%	11%	15%	23%
Education	High School or Less	13%	6%	21%	10%	15%	36%
	Some College/Associates Degree	14%	10%	11%	8%	20%	37%
	College Graduate	18%	20%	11%	12%	14%	26%
	Graduate/Professional School	28%	17%	14%	7%	13%	21%
Ideology	Very Conservative	1%	1%	3%	3%	30%	62%
	Somewhat Conservative	5%	4%	8%	11%	23%	49%
	Moderate	15%	11%	13%	14%	19%	28%
	Somewhat Liberal	35%	26%	19%	9%	5%	5%
	Very Liberal	35%	27%	27%	7%	2%	2%
Party Registration	Democratic	35%	26%	21%	9%	6%	4%
	Republican	2%	1%	5%	7%	24%	61%
	Undeclared	16%	13%	14%	11%	18%	29%
Party Identification	Democratic	34%	27%	21%	10%	5%	3%
	Republican	2%	1%	5%	7%	26%	58%
	Swing	17%	9%	14%	16%	20%	24%
Congressional District	CD-1	17%	12%	12%	10%	19%	30%
	CD-2	19%	15%	14%	8%	13%	31%
Region	North Country/Lakes	18%	4%	19%	7%	16%	36%
	Monadnock/Dartmouth	26%	9%	17%	8%	14%	26%
	Merrimack Valley	17%	17%	14%	9%	13%	30%
	Seacoast/Border	17%	14%	10%	10%	19%	30%
Total		18%	14%	13%	9%	16%	30%

Cost of Health Care Issue Rank							
		1	2	3	4	5	6
Gender	Female	22%	26%	24%	18%	7%	2%
	Male	17%	16%	23%	30%	10%	3%
Age	18-34	26%	23%	17%	22%	6%	6%
	35-54	18%	20%	23%	29%	8%	2%
	55-64	17%	19%	29%	25%	9%	2%
	65+	21%	24%	23%	18%	10%	3%
Education	High School or Less	23%	14%	16%	33%	10%	5%
	Some College/Associates Degree	16%	20%	27%	26%	10%	2%
	College Graduate	22%	26%	22%	20%	8%	3%
	Graduate/Professional School	20%	24%	27%	20%	7%	2%
Ideology	Very Conservative	7%	10%	27%	42%	11%	3%
	Somewhat Conservative	12%	15%	25%	33%	12%	3%
	Moderate	15%	22%	21%	25%	11%	6%
	Somewhat Liberal	26%	33%	23%	12%	5%	1%
	Very Liberal	43%	26%	22%	7%	1%	1%
Party Registration	Democratic	35%	28%	22%	10%	3%	2%
	Republican	9%	12%	23%	38%	15%	3%
	Undeclared	16%	22%	25%	25%	9%	3%
Party Identification	Democratic	33%	29%	23%	10%	4%	2%
	Republican	8%	12%	24%	38%	15%	4%
	Swing	11%	30%	29%	23%	3%	4%
Congressional District	CD-1	17%	19%	26%	27%	8%	3%
	CD-2	23%	24%	21%	21%	9%	2%
Region	North Country/Lakes	13%	21%	30%	24%	10%	1%
	Monadnock/Dartmouth	25%	27%	18%	20%	10%	
	Merrimack Valley	23%	22%	23%	20%	10%	2%
	Seacoast/Border	17%	19%	24%	29%	7%	5%
Total		20%	21%	24%	24%	9%	3%

COVID-19 Issue Rank							
		1	2	3	4	5	6
Gender	Female	15%	18%	19%	9%	22%	17%
	Male	10%	12%	13%	13%	31%	20%
Age	18-34	9%	19%	17%	14%	19%	21%
	35-54	13%	12%	18%	10%	26%	21%
	55-64	10%	14%	14%	11%	36%	15%
	65+	18%	18%	16%	12%	20%	16%
Education	High School or Less	9%	23%	10%	6%	32%	20%
	Some College/Associates Degree	9%	13%	14%	11%	31%	22%
	College Graduate	15%	11%	21%	12%	25%	16%
	Graduate/Professional School	19%	17%	18%	15%	15%	15%
Ideology	Very Conservative	3%	3%	6%	11%	44%	33%
	Somewhat Conservative	6%	8%	11%	10%	40%	25%
	Moderate	15%	17%	14%	13%	21%	21%
	Somewhat Liberal	23%	18%	23%	13%	13%	10%
	Very Liberal	18%	36%	29%	10%	4%	4%
Party Registration	Democratic	21%	28%	25%	9%	11%	6%
	Republican	4%	3%	12%	10%	43%	27%
	Undeclared	13%	13%	13%	14%	26%	21%
Party Identification	Democratic	22%	26%	24%	11%	9%	8%
	Republican	4%	4%	10%	11%	43%	28%
	Swing	11%	16%	4%	14%	29%	26%
Congressional District	CD-1	13%	16%	15%	11%	25%	20%
	CD-2	13%	14%	18%	12%	27%	16%
Region	North Country/Lakes	18%	17%	10%	9%	29%	16%
	Monadnock/Dartmouth	8%	28%	13%	5%	26%	20%
	Merrimack Valley	15%	11%	19%	13%	26%	17%
	Seacoast/Border	10%	16%	17%	11%	26%	20%
Total		13%	15%	16%	11%	26%	18%

Foreign Aggression Issue Rank							
		1	2	3	4	5	6
Gender	Female	5%	10%	17%	35%	23%	11%
	Male	11%	14%	27%	25%	16%	7%
Age	18-34	10%	12%	19%	23%	31%	6%
	35-54	8%	15%	25%	27%	18%	7%
	55-64	8%	9%	24%	35%	17%	7%
	65+	7%	11%	17%	33%	16%	16%
Education	High School or Less	14%	11%	25%	25%	19%	5%
	Some College/Associates Degree	6%	13%	23%	33%	18%	7%
	College Graduate	9%	10%	21%	29%	21%	9%
	Graduate/Professional School	4%	12%	19%	30%	20%	15%
Ideology	Very Conservative	7%	12%	35%	31%	14%	
	Somewhat Conservative	12%	16%	27%	27%	11%	8%
	Moderate	12%	11%	27%	25%	19%	6%
	Somewhat Liberal	3%	12%	14%	30%	24%	17%
	Very Liberal	4%	4%	6%	40%	35%	11%
Party Registration	Democratic	2%	10%	12%	38%	25%	14%
	Republican	11%	14%	32%	30%	11%	2%
	Undeclared	10%	12%	22%	25%	21%	10%
Party Identification	Democratic	4%	10%	11%	33%	28%	14%
	Republican	11%	15%	31%	29%	11%	4%
	Swing	10%	9%	33%	20%	17%	11%
Congressional District	CD-1	9%	13%	21%	29%	19%	9%
	CD-2	6%	10%	23%	31%	20%	9%
Region	North Country/Lakes	9%	14%	14%	34%	21%	8%
	Monadnock/Dartmouth	3%	5%	22%	41%	17%	11%
	Merrimack Valley	7%	13%	22%	28%	21%	9%
	Seacoast/Border	9%	12%	24%	28%	18%	9%
Total		8%	12%	22%	30%	19%	9%

Government Spending Issue Rank							
		1	2	3	4	5	6
Gender	Female	18%	16%	14%	17%	18%	17%
	Male	28%	25%	13%	14%	13%	7%
Age	18-34	20%	18%	13%	20%	19%	10%
	35-54	28%	19%	14%	18%	13%	8%
	55-64	24%	24%	11%	8%	15%	16%
	65+	15%	20%	16%	16%	18%	15%
Education	High School or Less	17%	28%	13%	18%	18%	6%
	Some College/Associates Degree	29%	24%	16%	10%	10%	12%
	College Graduate	22%	18%	12%	18%	18%	12%
	Graduate/Professional School	17%	13%	13%	17%	21%	18%
Ideology	Very Conservative	39%	35%	19%	6%	1%	
	Somewhat Conservative	31%	33%	15%	10%	7%	4%
	Moderate	27%	26%	15%	15%	7%	9%
	Somewhat Liberal	12%	5%	12%	24%	28%	19%
	Very Liberal		2%	7%	22%	35%	33%
Party Registration	Democratic	5%	4%	11%	21%	30%	29%
	Republican	36%	37%	13%	9%	4%	1%
	Undeclared	26%	21%	16%	16%	14%	8%
Party Identification	Democratic	5%	5%	12%	23%	30%	24%
	Republican	37%	36%	15%	7%	3%	1%
	Swing	37%	20%	11%	17%	9%	6%
Congressional District	CD-1	25%	20%	14%	15%	15%	10%
	CD-2	20%	21%	13%	16%	16%	14%
Region	North Country/Lakes	18%	27%	14%	18%	11%	11%
	Monadnock/Dartmouth	21%	14%	17%	16%	13%	18%
	Merrimack Valley	20%	21%	12%	17%	17%	13%
	Seacoast/Border	26%	20%	15%	12%	17%	9%
Total		22%	21%	14%	15%	16%	12%

Illegal Immigration Issue Rank							
		1	2	3	4	5	6
Gender	Female	19%	14%	12%	11%	16%	29%
	Male	21%	22%	10%	10%	12%	26%
Age	18-34	13%	14%	19%	10%	5%	40%
	35-54	18%	20%	9%	9%	15%	28%
	55-64	25%	21%	9%	13%	12%	20%
	65+	21%	12%	10%	9%	21%	27%
Education	High School or Less	24%	18%	15%	7%	6%	29%
	Some College/Associates Degree	27%	19%	9%	12%	12%	20%
	College Graduate	15%	15%	12%	10%	15%	34%
	Graduate/Professional School	11%	17%	9%	10%	23%	29%
Ideology	Very Conservative	44%	39%	8%	6%		2%
	Somewhat Conservative	33%	25%	15%	9%	7%	12%
	Moderate	15%	14%	10%	8%	23%	30%
	Somewhat Liberal	1%	5%	9%	13%	24%	48%
	Very Liberal	1%	4%	8%	15%	21%	50%
Party Registration	Democratic	3%	3%	9%	15%	26%	45%
	Republican	37%	32%	15%	7%	3%	5%
	Undeclared	20%	18%	10%	10%	14%	29%
Party Identification	Democratic	2%	4%	8%	13%	24%	49%
	Republican	39%	31%	14%	8%	3%	5%
	Swing	13%	17%	9%	10%	23%	29%
Congressional District	CD-1	19%	18%	12%	9%	14%	27%
	CD-2	20%	16%	10%	11%	14%	27%
Region	North Country/Lakes	23%	18%	12%	6%	13%	27%
	Monadnock/Dartmouth	17%	17%	13%	10%	18%	24%
	Merrimack Valley	18%	16%	11%	12%	14%	29%
	Seacoast/Border	21%	18%	11%	9%	14%	26%
Total		20%	18%	11%	10%	14%	27%

How worried are you about inflation?			
		Very/ Somewhat	Not Very/ Not at all
Gender	Female	83%	17%
	Male	83%	17%
Age	18-34	77%	23%
	35-54	85%	15%
	55-64	86%	14%
	65+	82%	18%
Education	High School or Less	88%	12%
	Some College/Associates Degree	91%	9%
	College Graduate	81%	19%
	Graduate/Professional School	72%	28%
Ideology	Very Conservative	98%	2%
	Somewhat Conservative	96%	4%
	Moderate	80%	20%
	Somewhat Liberal	73%	27%
	Very Liberal	60%	40%
Top Issue	Climate Change	70%	30%
	Foreign Aggression	87%	13%
	Government Spending	96%	4%
	Illegal Immigration	98%	2%
	COVID-19	68%	32%
	Cost of Health Care	73%	27%
Party Registration	Democratic	65%	35%
	Republican	96%	4%
	Undeclared	88%	12%
Party Identification	Democratic	69%	31%
	Republican	96%	4%
	Swing	91%	9%
Congressional District	CD-1	85%	15%
	CD-2	81%	19%
Region	North Country/Lakes	89%	11%
	Monadnock/Dartmouth	80%	20%
	Merrimack Valley	82%	18%
	Seacoast/Border	84%	16%
Total		83%	17%

How worried are you about inflation?					
		Very Worried	Somewhat Worried	Not Very Worried	Not at all Worried
Gender	Female	40%	43%	15%	2%
	Male	52%	31%	13%	4%
Age	18-34	43%	34%	18%	5%
	35-54	47%	38%	13%	3%
	55-64	52%	34%	10%	3%
	65+	39%	42%	16%	2%
Education	High School or Less	56%	31%	12%	
	Some College/Associates Degree	55%	36%	6%	3%
	College Graduate	39%	41%	17%	3%
	Graduate/Professional School	33%	39%	23%	5%
Ideology	Very Conservative	77%	21%	2%	
	Somewhat Conservative	65%	31%	3%	1%
	Moderate	46%	34%	14%	6%
	Somewhat Liberal	21%	52%	23%	3%
	Very Liberal	15%	45%	33%	7%
Top Issue	Climate Change	18%	52%	23%	7%
	Foreign Aggression	48%	39%	11%	1%
	Government Spending	75%	21%	1%	2%
	Illegal Immigration	73%	25%	2%	
	COVID-19	19%	48%	26%	6%
	Cost of Health Care	27%	47%	24%	2%
Party Registration	Democratic	17%	48%	29%	6%
	Republican	73%	23%	3%	1%
	Undeclared	48%	40%	10%	2%
Party Identification	Democratic	19%	50%	26%	5%
	Republican	72%	24%	3%	1%
	Swing	50%	41%	6%	3%
Congressional District	CD-1	47%	38%	12%	3%
	CD-2	44%	37%	16%	3%
Region	North Country/Lakes	44%	44%	10%	1%
	Monadnock/Dartmouth	43%	37%	17%	2%
	Merrimack Valley	44%	38%	15%	3%
	Seacoast/Border	49%	35%	12%	4%
Total		46%	37%	14%	3%

How worried are you about the national debt?			
		Very/ Somewhat	Not Very/ Not at all
Gender	Female	75%	25%
	Male	81%	19%
Age	18-34	64%	36%
	35-54	78%	22%
	55-64	83%	17%
	65+	80%	20%
Education	High School or Less	81%	19%
	Some College/Associates Degree	85%	15%
	College Graduate	76%	24%
	Graduate/Professional School	65%	35%
Ideology	Very Conservative	97%	3%
	Somewhat Conservative	94%	6%
	Moderate	75%	25%
	Somewhat Liberal	67%	33%
	Very Liberal	41%	59%
Top Issue	Climate Change	58%	42%
	Foreign Aggression	82%	18%
	Government Spending	95%	5%
	Illegal Immigration	97%	3%
	COVID-19	64%	36%
	Cost of Health Care	64%	36%
Party Registration	Democratic	55%	45%
	Republican	93%	7%
	Undeclared	83%	17%
Party Identification	Democratic	58%	42%
	Republican	95%	5%
	Swing	87%	13%
Congressional District	CD-1	78%	22%
	CD-2	77%	23%
Region	North Country/Lakes	79%	21%
	Monadnock/Dartmouth	78%	22%
	Merrimack Valley	77%	23%
	Seacoast/Border	78%	22%
Total		77%	23%

How worried are you about the national debt?					
		Very Worried	Somewhat Worried	Not Very Worried	Not at all Worried
Gender	Female	40%	35%	21%	4%
	Male	54%	26%	13%	6%
Age	18-34	34%	30%	27%	9%
	35-54	50%	28%	16%	6%
	55-64	55%	28%	13%	5%
	65+	42%	37%	17%	3%
Education	High School or Less	52%	29%	17%	1%
	Some College/Associates Degree	55%	29%	10%	5%
	College Graduate	42%	34%	17%	7%
	Graduate/Professional School	36%	29%	28%	6%
Ideology	Very Conservative	84%	14%	1%	1%
	Somewhat Conservative	67%	27%	6%	0%
	Moderate	53%	22%	14%	11%
	Somewhat Liberal	20%	47%	26%	6%
	Very Liberal	7%	34%	45%	13%
Top Issue	Climate Change	16%	41%	30%	12%
	Foreign Aggression	48%	34%	17%	1%
	Government Spending	78%	16%	3%	2%
	Illegal Immigration	81%	16%	2%	1%
	COVID-19	19%	45%	29%	8%
	Cost of Health Care	23%	41%	29%	7%
Party Registration	Democratic	14%	41%	35%	10%
	Republican	76%	17%	5%	2%
	Undeclared	51%	32%	13%	4%
Party Identification	Democratic	15%	43%	32%	9%
	Republican	76%	19%	4%	1%
	Swing	61%	25%	8%	6%
Congressional District	CD-1	48%	31%	16%	6%
	CD-2	46%	31%	19%	4%
Region	North Country/Lakes	56%	23%	18%	3%
	Monadnock/Dartmouth	41%	37%	20%	2%
	Merrimack Valley	45%	32%	17%	6%
	Seacoast/Border	48%	30%	17%	6%
Total		47%	31%	17%	5%

Do you trust cryptocurrency?				
		Yes	No	Unsure
Gender	Female	7%	59%	34%
	Male	12%	58%	30%
Age	18-34	22%	47%	32%
	35-54	13%	55%	32%
	55-64	5%	63%	32%
	65+	3%	64%	33%
Education	High School or Less	8%	50%	42%
	Some College/Associates Degree	9%	61%	30%
	College Graduate	13%	57%	30%
	Graduate/Professional School	8%	63%	29%
Ideology	Very Conservative	11%	58%	32%
	Somewhat Conservative	7%	59%	34%
	Moderate	14%	50%	37%
	Somewhat Liberal	9%	63%	28%
	Very Liberal	12%	56%	32%
Top Issue	Climate Change	9%	58%	33%
	Foreign Aggression	8%	65%	27%
	Government Spending	12%	52%	36%
	Illegal Immigration	9%	61%	30%
	COVID-19	8%	59%	32%
	Cost of Health Care	9%	60%	31%
Party Registration	Democratic	8%	61%	31%
	Republican	11%	59%	30%
	Undeclared	10%	56%	34%
Party Identification	Democratic	10%	60%	30%
	Republican	8%	58%	34%
	Swing	21%	46%	32%
Congressional District	CD-1	10%	59%	31%
	CD-2	9%	58%	33%
Region	North Country/Lakes	4%	63%	33%
	Monadnock/Dartmouth	3%	62%	35%
	Merrimack Valley	12%	56%	31%
	Seacoast/Border	10%	58%	32%
Total		10%	58%	32%

How would you rate President Biden's handling of the economy?				
		Excellent/Good	Fair/Poor	Unsure
Gender	Female	49%	48%	3%
	Male	30%	68%	2%
Age	18-34	35%	61%	3%
	35-54	34%	63%	3%
	55-64	37%	61%	2%
	65+	53%	47%	0%
Education	High School or Less	34%	63%	3%
	Some College/Associates Degree	30%	68%	2%
	College Graduate	44%	54%	2%
	Graduate/Professional School	53%	44%	3%
Ideology	Very Conservative	1%	99%	
	Somewhat Conservative	17%	81%	1%
	Moderate	30%	67%	3%
	Somewhat Liberal	74%	22%	4%
	Very Liberal	76%	20%	4%
Top Issue	Climate Change	72%	24%	4%
	Foreign Aggression	28%	72%	
	Government Spending	7%	90%	3%
	Illegal Immigration	1%	99%	1%
	COVID-19	81%	19%	1%
	Cost of Health Care	65%	32%	3%
Party Registration	Democratic	78%	18%	4%
	Republican	3%	97%	0%
	Undeclared	36%	61%	3%
Party Identification	Democratic	77%	20%	3%
	Republican	4%	96%	0%
	Swing	30%	63%	7%
Congressional District	CD-1	37%	60%	2%
	CD-2	43%	55%	2%
Region	North Country/Lakes	38%	59%	3%
	Monadnock/Dartmouth	39%	57%	4%
	Merrimack Valley	46%	52%	2%
	Seacoast/Border	34%	64%	2%
Total		40%	58%	2%

How would you rate President Biden's handling of the economy?						
		Excellent	Good	Fair	Poor	Unsure
Gender	Female	17%	32%	11%	37%	3%
	Male	11%	19%	12%	56%	2%
Age	18-34	7%	29%	18%	43%	3%
	35-54	11%	23%	14%	49%	3%
	55-64	15%	22%	6%	55%	2%
	65+	21%	31%	10%	37%	0%
Education	High School or Less	10%	25%	7%	55%	3%
	Some College/Associates Degree	9%	22%	9%	58%	2%
	College Graduate	16%	28%	14%	40%	2%
	Graduate/Professional School	23%	30%	15%	30%	3%
Ideology	Very Conservative	1%		3%	97%	
	Somewhat Conservative	6%	12%	10%	72%	1%
	Moderate	8%	23%	14%	53%	3%
	Somewhat Liberal	26%	49%	16%	6%	4%
	Very Liberal	31%	46%	16%	4%	4%
Top Issue	Climate Change	27%	45%	20%	3%	4%
	Foreign Aggression	8%	20%	4%	68%	
	Government Spending	1%	6%	9%	81%	3%
	Illegal Immigration		1%	5%	94%	1%
	COVID-19	31%	49%	10%	8%	1%
	Cost of Health Care	21%	44%	18%	14%	3%
Party Registration	Democratic	32%	47%	13%	5%	4%
	Republican	0%	3%	7%	89%	0%
	Undeclared	10%	26%	14%	47%	3%
Party Identification	Democratic	28%	49%	15%	5%	3%
	Republican	1%	3%	8%	88%	0%
	Swing	6%	24%	16%	47%	7%
Congressional District	CD-1	12%	25%	12%	48%	2%
	CD-2	16%	27%	11%	44%	2%
Region	North Country/Lakes	18%	20%	7%	52%	3%
	Monadnock/Dartmouth	20%	18%	13%	44%	4%
	Merrimack Valley	13%	33%	12%	40%	2%
	Seacoast/Border	12%	22%	13%	52%	2%
Total		14%	26%	12%	46%	2%

How would you rate President Biden's handling of the cost of energy?				
		Excellent/Good	Fair/Poor	Unsure
Gender	Female	34%	52%	14%
	Male	22%	69%	9%
Age	18-34	20%	60%	19%
	35-54	24%	64%	12%
	55-64	27%	63%	10%
	65+	40%	53%	7%
Education	High School or Less	25%	63%	12%
	Some College/Associates Degree	25%	69%	6%
	College Graduate	28%	55%	18%
	Graduate/Professional School	37%	51%	11%
Ideology	Very Conservative		97%	3%
	Somewhat Conservative	12%	84%	4%
	Moderate	20%	69%	11%
	Somewhat Liberal	52%	26%	21%
	Very Liberal	58%	23%	19%
Top Issue	Climate Change	56%	26%	18%
	Foreign Aggression	13%	73%	14%
	Government Spending	6%	90%	4%
	Illegal Immigration	1%	97%	2%
	COVID-19	51%	34%	15%
	Cost of Health Care	47%	34%	19%
Party Registration	Democratic	60%	23%	17%
	Republican	2%	94%	4%
	Undeclared	23%	65%	12%
Party Identification	Democratic	55%	26%	19%
	Republican	3%	93%	4%
	Swing	19%	69%	13%
Congressional District	CD-1	26%	63%	11%
	CD-2	31%	58%	11%
Region	North Country/Lakes	31%	60%	9%
	Monadnock/Dartmouth	30%	65%	5%
	Merrimack Valley	31%	56%	13%
	Seacoast/Border	25%	64%	12%
Total		28%	60%	11%

How would you rate President Biden's handling of the cost of energy?						
		Excellent	Good	Fair	Poor	Unsure
Gender	Female	6%	28%	15%	37%	14%
	Male	4%	18%	10%	59%	9%
Age	18-34	5%	15%	19%	41%	19%
	35-54	5%	19%	13%	51%	12%
	55-64	5%	22%	9%	55%	10%
	65+	7%	33%	13%	40%	7%
Education	High School or Less	1%	24%	6%	58%	12%
	Some College/Associates Degree	3%	21%	12%	57%	6%
	College Graduate	6%	22%	12%	43%	18%
	Graduate/Professional School	10%	26%	19%	32%	11%
Ideology	Very Conservative			1%	97%	3%
	Somewhat Conservative	1%	11%	10%	74%	4%
	Moderate	5%	15%	14%	55%	11%
	Somewhat Liberal	11%	41%	18%	8%	21%
	Very Liberal	11%	47%	21%	2%	19%
Top Issue	Climate Change	9%	47%	23%	3%	18%
	Foreign Aggression	4%	8%	10%	64%	14%
	Government Spending	1%	4%	6%	84%	4%
	Illegal Immigration	1%	1%	2%	95%	2%
	COVID-19	13%	39%	23%	10%	15%
	Cost of Health Care	7%	40%	17%	17%	19%
Party Registration	Democratic	13%	47%	17%	6%	17%
	Republican	0%	1%	4%	90%	4%
	Undeclared	3%	20%	15%	49%	12%
Party Identification	Democratic	11%	44%	20%	6%	19%
	Republican	0%	3%	5%	88%	4%
	Swing	3%	16%	17%	51%	13%
Congressional District	CD-1	5%	21%	13%	49%	11%
	CD-2	6%	25%	12%	46%	11%
Region	North Country/Lakes	4%	27%	7%	53%	9%
	Monadnock/Dartmouth	3%	27%	18%	46%	5%
	Merrimack Valley	6%	24%	14%	42%	13%
	Seacoast/Border	5%	19%	12%	52%	12%
Total		5%	23%	13%	48%	11%

How would you rate President Biden's handling of race issues?				
		Excellent/Good	Fair/Poor	Unsure
Gender	Female	50%	47%	3%
	Male	30%	67%	3%
Age	18-34	31%	63%	6%
	35-54	33%	63%	4%
	55-64	42%	58%	0%
	65+	54%	43%	3%
Education	High School or Less	35%	61%	4%
	Some College/Associates Degree	31%	66%	3%
	College Graduate	43%	54%	3%
	Graduate/Professional School	56%	43%	1%
Ideology	Very Conservative	2%	97%	1%
	Somewhat Conservative	19%	77%	4%
	Moderate	29%	65%	6%
	Somewhat Liberal	75%	22%	3%
	Very Liberal	75%	24%	1%
Top Issue	Climate Change	74%	24%	2%
	Foreign Aggression	25%	65%	10%
	Government Spending	8%	88%	4%
	Illegal Immigration	3%	94%	3%
	COVID-19	77%	22%	1%
	Cost of Health Care	66%	33%	2%
Party Registration	Democratic	81%	18%	1%
	Republican	5%	93%	2%
	Undeclared	35%	60%	5%
Party Identification	Democratic	78%	21%	1%
	Republican	5%	91%	4%
	Swing	29%	64%	7%
Congressional District	CD-1	36%	61%	3%
	CD-2	45%	52%	3%
Region	North Country/Lakes	34%	62%	4%
	Monadnock/Dartmouth	51%	49%	
	Merrimack Valley	43%	53%	4%
	Seacoast/Border	37%	60%	3%
Total		41%	56%	3%

How would you rate President Biden's handling of race issues?						
		Excellent	Good	Fair	Poor	Unsure
Gender	Female	19%	31%	13%	34%	3%
	Male	9%	21%	11%	56%	3%
Age	18-34	8%	23%	20%	42%	6%
	35-54	11%	22%	15%	48%	4%
	55-64	14%	28%	7%	51%	0%
	65+	23%	31%	9%	34%	3%
Education	High School or Less	12%	23%	11%	50%	4%
	Some College/Associates Degree	11%	20%	11%	54%	3%
	College Graduate	15%	28%	13%	40%	3%
	Graduate/Professional School	21%	34%	12%	30%	1%
Ideology	Very Conservative	1%	1%	2%	95%	1%
	Somewhat Conservative	5%	14%	11%	66%	4%
	Moderate	11%	18%	16%	49%	6%
	Somewhat Liberal	28%	47%	15%	7%	3%
	Very Liberal	28%	47%	18%	6%	1%
Top Issue	Climate Change	26%	48%	18%	5%	2%
	Foreign Aggression	7%	18%	13%	52%	10%
	Government Spending	2%	6%	9%	79%	4%
	Illegal Immigration	1%	3%	4%	90%	3%
	COVID-19	29%	48%	15%	7%	1%
	Cost of Health Care	25%	41%	16%	17%	2%
Party Registration	Democratic	32%	49%	10%	7%	1%
	Republican	1%	4%	7%	86%	2%
	Undeclared	11%	24%	17%	43%	5%
Party Identification	Democratic	30%	48%	15%	6%	1%
	Republican	1%	4%	8%	83%	4%
	Swing	6%	23%	24%	40%	7%
Congressional District	CD-1	11%	25%	14%	47%	3%
	CD-2	18%	27%	10%	42%	3%
Region	North Country/Lakes	17%	17%	12%	50%	4%
	Monadnock/Dartmouth	26%	25%	5%	43%	
	Merrimack Valley	16%	27%	14%	39%	4%
	Seacoast/Border	9%	27%	12%	49%	3%
Total		15%	26%	12%	44%	3%

How would you rate President Biden's handling of environmental issues?				
		Excellent/Good	Fair/Poor	Unsure
Gender	Female	48%	45%	7%
	Male	30%	65%	5%
Age	18-34	37%	58%	6%
	35-54	32%	61%	8%
	55-64	37%	58%	5%
	65+	53%	42%	5%
Education	High School or Less	33%	61%	6%
	Some College/Associates Degree	29%	66%	6%
	College Graduate	44%	49%	7%
	Graduate/Professional School	55%	39%	5%
Ideology	Very Conservative	1%	95%	4%
	Somewhat Conservative	17%	74%	9%
	Moderate	35%	55%	11%
	Somewhat Liberal	75%	21%	4%
	Very Liberal	69%	29%	2%
Top Issue	Climate Change	71%	26%	4%
	Foreign Aggression	27%	66%	7%
	Government Spending	11%	81%	9%
	Illegal Immigration	2%	90%	8%
	COVID-19	76%	22%	3%
	Cost of Health Care	63%	32%	5%
Party Registration	Democratic	75%	21%	5%
	Republican	5%	87%	8%
	Undeclared	37%	57%	6%
Party Identification	Democratic	74%	21%	5%
	Republican	6%	87%	7%
	Swing	34%	57%	9%
Congressional District	CD-1	37%	57%	7%
	CD-2	43%	52%	5%
Region	North Country/Lakes	41%	56%	3%
	Monadnock/Dartmouth	39%	59%	2%
	Merrimack Valley	43%	49%	8%
	Seacoast/Border	35%	59%	6%
Total		39%	55%	6%

How would you rate President Biden's handling of environmental issues?						
		Excellent	Good	Fair	Poor	Unsure
Gender	Female	21%	28%	15%	30%	7%
	Male	10%	20%	21%	45%	5%
Age	18-34	6%	31%	28%	29%	6%
	35-54	10%	21%	20%	41%	8%
	55-64	17%	20%	13%	45%	5%
	65+	26%	26%	13%	29%	5%
Education	High School or Less	15%	18%	14%	47%	6%
	Some College/Associates Degree	13%	16%	19%	47%	6%
	College Graduate	15%	28%	18%	31%	7%
	Graduate/Professional School	20%	36%	17%	22%	5%
Ideology	Very Conservative	1%	1%	10%	85%	4%
	Somewhat Conservative	6%	11%	19%	55%	9%
	Moderate	11%	24%	13%	42%	11%
	Somewhat Liberal	32%	43%	19%	3%	4%
	Very Liberal	27%	43%	24%	4%	2%
Top Issue	Climate Change	30%	41%	21%	4%	4%
	Foreign Aggression	7%	21%	24%	42%	7%
	Government Spending	4%	6%	17%	64%	9%
	Illegal Immigration	1%	1%	10%	80%	8%
	COVID-19	33%	43%	14%	7%	3%
	Cost of Health Care	22%	41%	21%	11%	5%
Party Registration	Democratic	35%	40%	18%	3%	5%
	Republican	1%	4%	13%	74%	8%
	Undeclared	11%	26%	20%	37%	6%
Party Identification	Democratic	32%	42%	18%	4%	5%
	Republican	1%	5%	15%	72%	7%
	Swing	6%	29%	27%	30%	9%
Congressional District	CD-1	14%	22%	19%	38%	7%
	CD-2	17%	26%	16%	36%	5%
Region	North Country/Lakes	19%	21%	21%	35%	3%
	Monadnock/Dartmouth	19%	19%	18%	41%	2%
	Merrimack Valley	16%	27%	17%	32%	8%
	Seacoast/Border	13%	22%	17%	42%	6%
Total		16%	24%	18%	37%	6%

How would you rate President Biden's handling of the COVID-19 epidemic?				
		Excellent/Good	Fair/Poor	Unsure
Gender	Female	60%	38%	2%
	Male	41%	57%	1%
Age	18-34	50%	48%	1%
	35-54	47%	50%	3%
	55-64	47%	53%	
	65+	62%	38%	1%
Education	High School or Less	42%	58%	
	Some College/Associates Degree	39%	59%	2%
	College Graduate	57%	41%	2%
	Graduate/Professional School	69%	30%	1%
Ideology	Very Conservative	3%	96%	1%
	Somewhat Conservative	25%	74%	2%
	Moderate	49%	49%	3%
	Somewhat Liberal	91%	8%	1%
	Very Liberal	92%	8%	
Top Issue	Climate Change	93%	7%	
	Foreign Aggression	37%	63%	
	Government Spending	16%	81%	3%
	Illegal Immigration	6%	92%	2%
	COVID-19	91%	9%	
	Cost of Health Care	80%	19%	1%
Party Registration	Democratic	92%	8%	
	Republican	9%	89%	2%
	Undeclared	49%	48%	2%
Party Identification	Democratic	93%	7%	0%
	Republican	10%	89%	1%
	Swing	52%	41%	7%
Congressional District	CD-1	49%	49%	1%
	CD-2	53%	45%	1%
Region	North Country/Lakes	48%	52%	
	Monadnock/Dartmouth	53%	47%	
	Merrimack Valley	55%	43%	2%
	Seacoast/Border	48%	51%	1%
Total		51%	47%	1%

How would you rate President Biden's handling of the COVID-19 epidemic?						
		Excellent	Good	Fair	Poor	Unsure
Gender	Female	48%	12%	10%	28%	2%
	Male	29%	12%	24%	33%	1%
Age	18-34	35%	15%	20%	29%	1%
	35-54	31%	16%	18%	32%	3%
	55-64	39%	8%	15%	38%	
	65+	52%	9%	16%	22%	1%
Education	High School or Less	33%	9%	20%	38%	
	Some College/Associates Degree	29%	11%	19%	40%	2%
	College Graduate	42%	15%	15%	26%	2%
	Graduate/Professional School	56%	12%	14%	16%	1%
Ideology	Very Conservative	1%	2%	23%	73%	1%
	Somewhat Conservative	17%	8%	29%	45%	2%
	Moderate	32%	16%	17%	32%	3%
	Somewhat Liberal	71%	20%	4%	4%	1%
	Very Liberal	76%	16%	7%	1%	
Top Issue	Climate Change	73%	20%	5%	2%	
	Foreign Aggression	21%	15%	24%	39%	
	Government Spending	9%	7%	27%	54%	3%
	Illegal Immigration	2%	4%	23%	69%	2%
	COVID-19	76%	14%	6%	3%	
	Cost of Health Care	64%	17%	13%	6%	1%
Party Registration	Democratic	76%	17%	5%	3%	
	Republican	4%	5%	29%	60%	2%
	Undeclared	36%	14%	18%	31%	2%
Party Identification	Democratic	75%	17%	5%	2%	0%
	Republican	4%	6%	29%	60%	1%
	Swing	33%	19%	19%	23%	7%
Congressional District	CD-1	36%	13%	18%	32%	1%
	CD-2	42%	11%	16%	29%	1%
Region	North Country/Lakes	38%	9%	21%	31%	
	Monadnock/Dartmouth	38%	16%	22%	25%	
	Merrimack Valley	45%	10%	15%	28%	2%
	Seacoast/Border	34%	14%	17%	34%	1%
Total		39%	12%	17%	31%	1%

How would you rate President Biden's handling of national security and foreign affairs?				
		Excellent/Good	Fair/Poor	Unsure
Gender	Female	49%	46%	5%
	Male	28%	69%	3%
Age	18-34	28%	64%	8%
	35-54	32%	64%	5%
	55-64	37%	60%	3%
	65+	56%	41%	3%
Education	High School or Less	33%	63%	4%
	Some College/Associates Degree	30%	66%	4%
	College Graduate	43%	53%	4%
	Graduate/Professional School	53%	43%	4%
Ideology	Very Conservative	1%	99%	1%
	Somewhat Conservative	18%	80%	2%
	Moderate	32%	64%	4%
	Somewhat Liberal	72%	22%	7%
	Very Liberal	73%	19%	8%
Top Issue	Climate Change	70%	22%	9%
	Foreign Aggression	21%	75%	4%
	Government Spending	9%	89%	2%
	Illegal Immigration	3%	96%	1%
	COVID-19	75%	21%	3%
	Cost of Health Care	66%	29%	6%
Party Registration	Democratic	76%	17%	7%
	Republican	4%	95%	1%
	Undeclared	35%	61%	4%
Party Identification	Democratic	75%	18%	7%
	Republican	4%	94%	1%
	Swing	27%	69%	4%
Congressional District	CD-1	36%	60%	3%
	CD-2	42%	53%	5%
Region	North Country/Lakes	33%	64%	3%
	Monadnock/Dartmouth	38%	55%	8%
	Merrimack Valley	44%	52%	4%
	Seacoast/Border	36%	60%	4%
Total		39%	57%	4%

How would you rate President Biden's handling of national security and foreign affairs?						
		Excellent	Good	Fair	Poor	Unsure
Gender	Female	19%	30%	11%	36%	5%
	Male	12%	16%	11%	58%	3%
Age	18-34	9%	19%	22%	43%	8%
	35-54	14%	17%	13%	51%	5%
	55-64	13%	24%	8%	53%	3%
	65+	24%	32%	5%	36%	3%
Education	High School or Less	12%	21%	6%	58%	4%
	Some College/Associates Degree	10%	20%	10%	56%	4%
	College Graduate	18%	25%	11%	42%	4%
	Graduate/Professional School	25%	28%	15%	28%	4%
Ideology	Very Conservative	1%	1%	2%	96%	1%
	Somewhat Conservative	5%	13%	7%	73%	2%
	Moderate	13%	20%	16%	48%	4%
	Somewhat Liberal	31%	41%	15%	7%	7%
	Very Liberal	31%	41%	16%	3%	8%
Top Issue	Climate Change	26%	43%	18%	4%	9%
	Foreign Aggression	13%	10%	8%	65%	4%
	Government Spending	3%	5%	10%	79%	2%
	Illegal Immigration	1%	2%	1%	95%	1%
	COVID-19	40%	34%	13%	8%	3%
	Cost of Health Care	21%	45%	15%	15%	6%
Party Registration	Democratic	33%	43%	11%	6%	7%
	Republican	2%	3%	5%	90%	1%
	Undeclared	13%	22%	14%	46%	4%
Party Identification	Democratic	32%	43%	13%	4%	7%
	Republican	1%	4%	5%	89%	1%
	Swing	6%	21%	27%	41%	4%
Congressional District	CD-1	13%	23%	13%	48%	3%
	CD-2	19%	23%	8%	45%	5%
Region	North Country/Lakes	15%	18%	12%	52%	3%
	Monadnock/Dartmouth	19%	18%	13%	42%	8%
	Merrimack Valley	18%	26%	11%	42%	4%
	Seacoast/Border	13%	23%	10%	50%	4%
Total		16%	23%	11%	46%	4%

DEMOGRAPHICS

69

June 9-11, 2021

n = 921

New Hampshire Registered Voters

MoE +/- 3.2%

Gender			
		Frequency	Percent
	Female	479	52
	Male	442	48
	Total	921	100

Age			
		Frequency	Percent
	18-34	144	16
	35-54	298	32
	55-64	240	26
	65+	239	26
	Total	921	100

Education			
		Frequency	Percent
	High School or Less	154	17
	Some College/Associates Degree	309	34
	College Graduate	256	28
	Graduate/Professional School	202	22
	Total	921	100

Ideology			
		Frequency	Percent
	Very Conservative	146	16
	Somewhat Conservative	289	31
	Moderate	111	12
	Somewhat Liberal	239	26
	Very Liberal	135	15
	Conservative	435	47
	Moderate	111	12
	Liberal	374	41
	Total	921	100

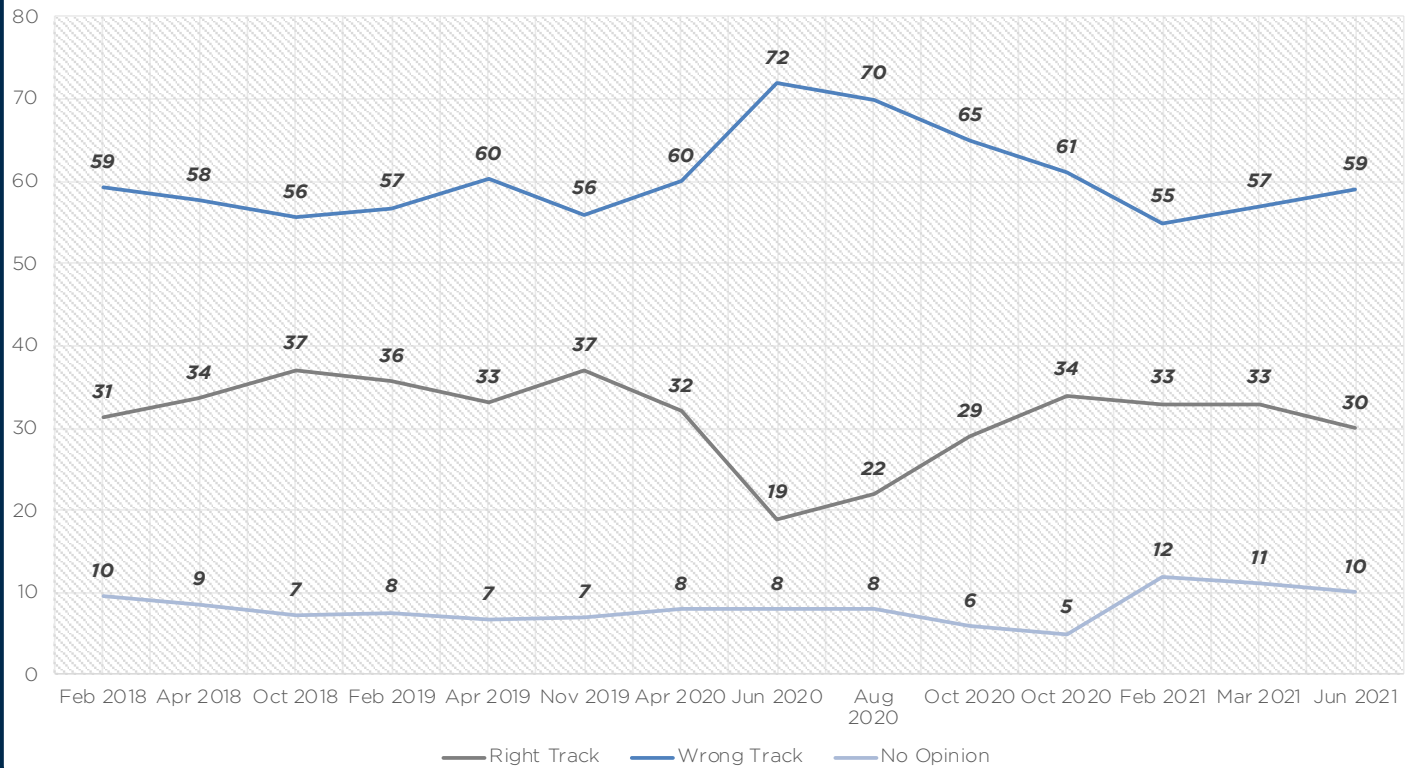
Party Registration			
		Frequency	Percent
	Democratic	279	30
	Republican	259	28
	Undeclared	384	42
	Total	921	100
CD-1	Democratic	139	28
	Republican	137	28
	Undeclared	214	44
	Total	490	100
CD-2	Democratic	140	33
	Republican	122	28
	Undeclared	169	39
	Total	431	100

Party Identification			
		Frequency	Percent
	Democratic	425	46
	Republican	425	46
	Swing	70	8
	Total	921	100
CD-1	Democratic	217	44
	Republican	228	47
	Swing	45	9
	Total	490	100
CD-2	Democratic	208	48
	Republican	197	46
	Swing	26	6
	Total	431	100

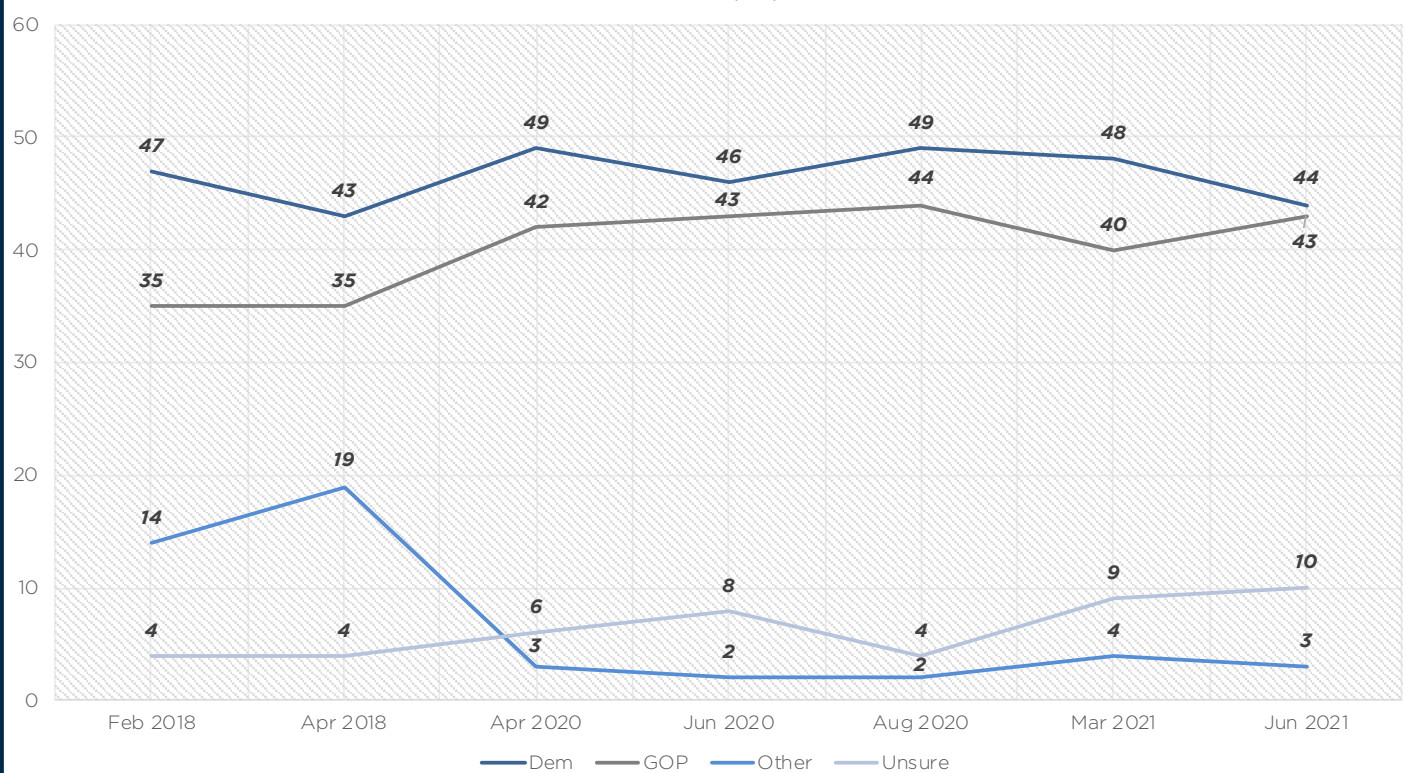
Congressional District			
		Frequency	Percent
	CD-1	490	53
	CD-2	431	47
	Total	921	100

Region			
		Frequency	Percent
	North Country/Lakes	99	11
	Monadnock/Dartmouth	92	10
	Merrimack Valley	361	39
	Seacoast/Border	368	40
	Total	921	100

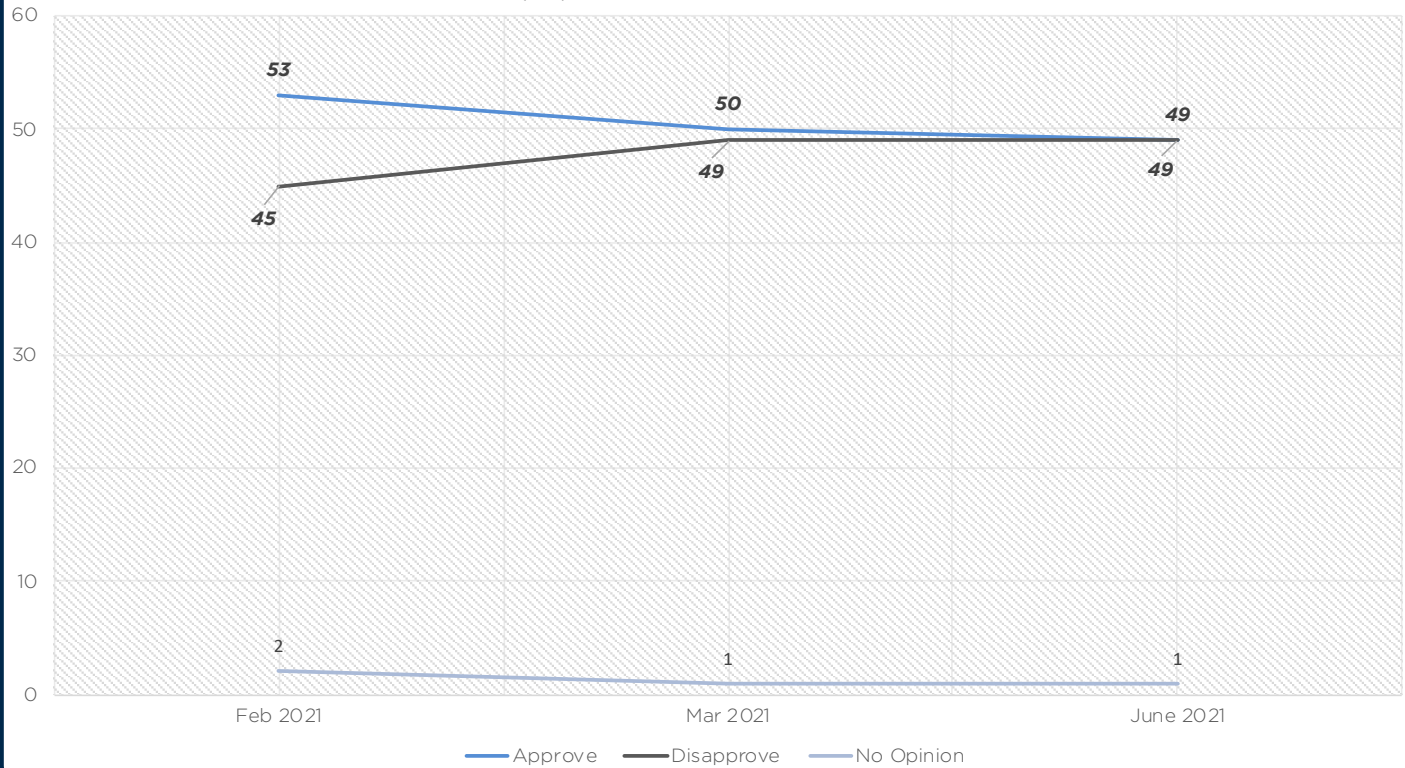
RIGHT TRACK VS. WRONG TRACK (%)



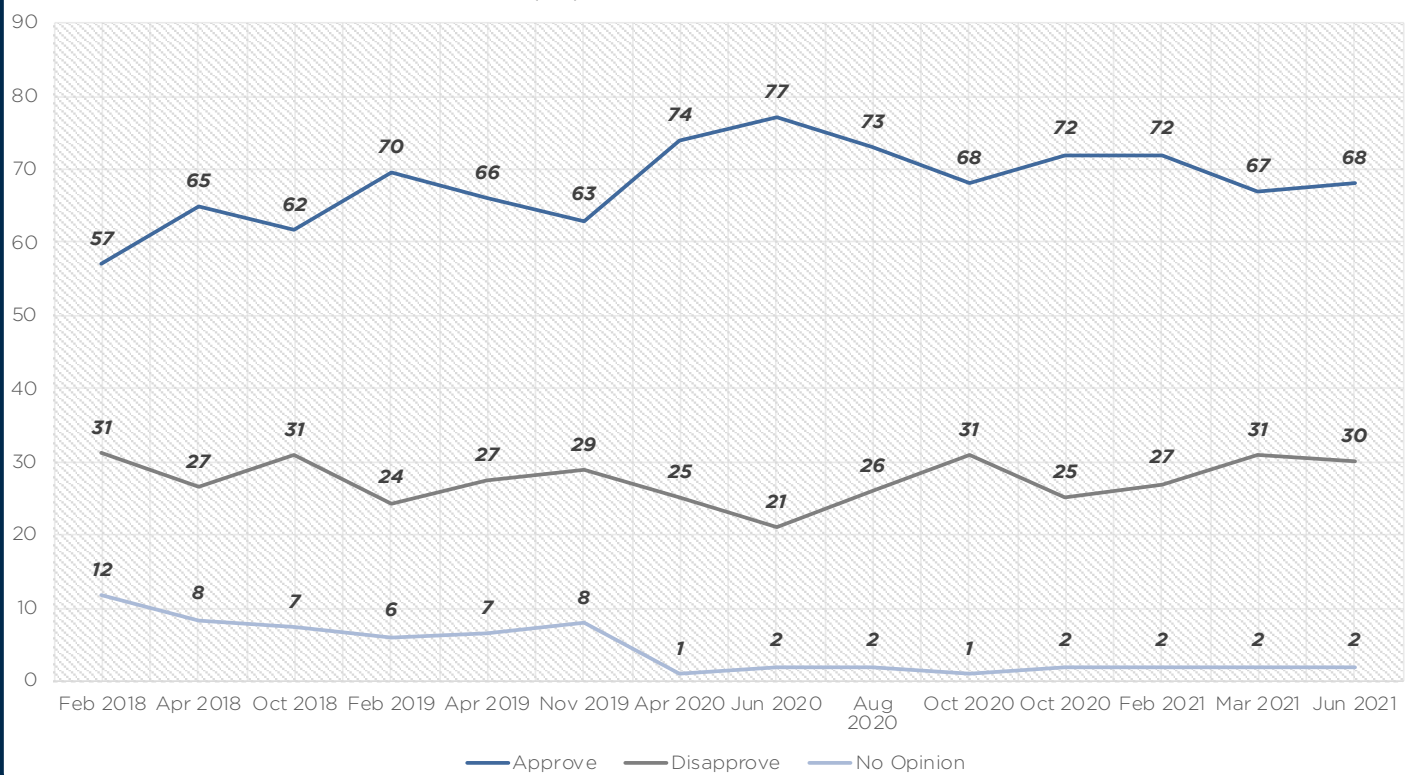
GENERIC CONGRESSIONAL BALLOT (%)



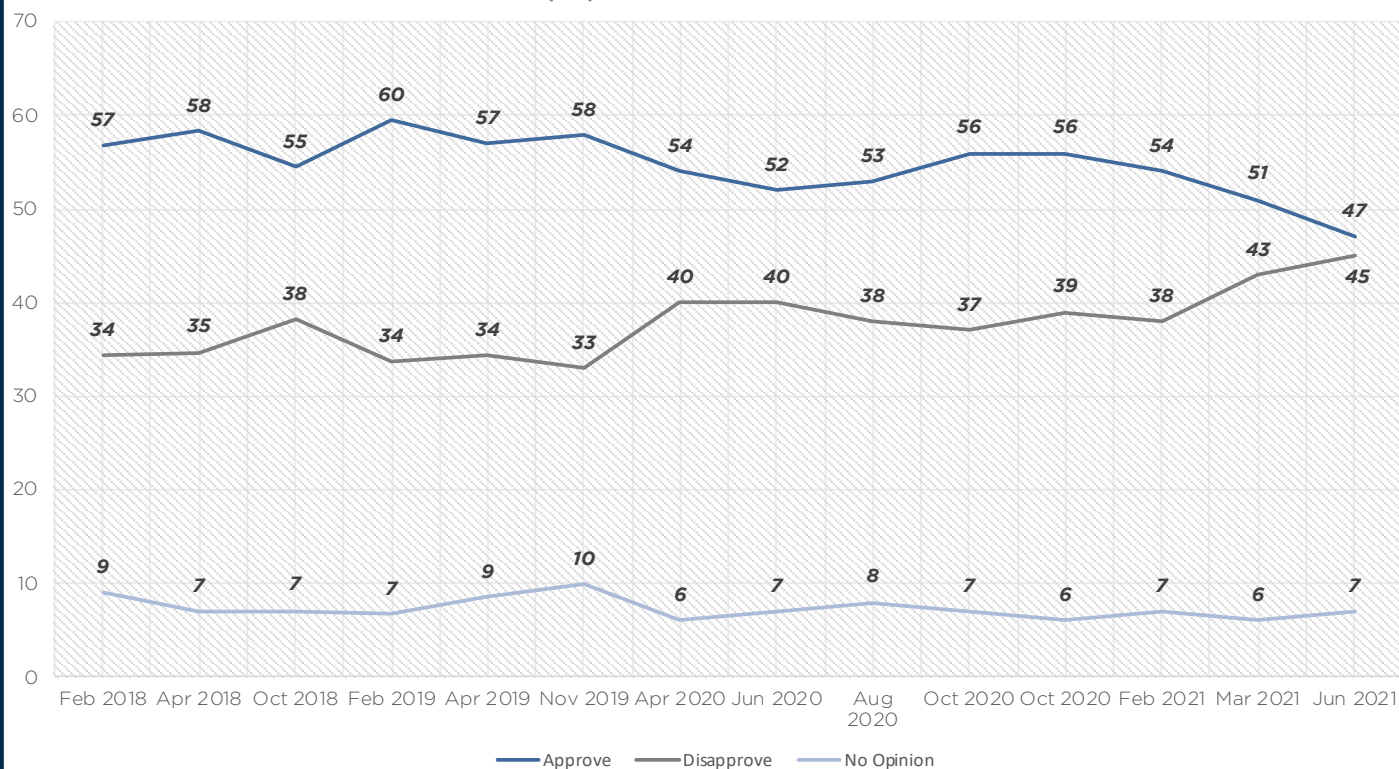
BIDEN JOB APPROVAL (%)



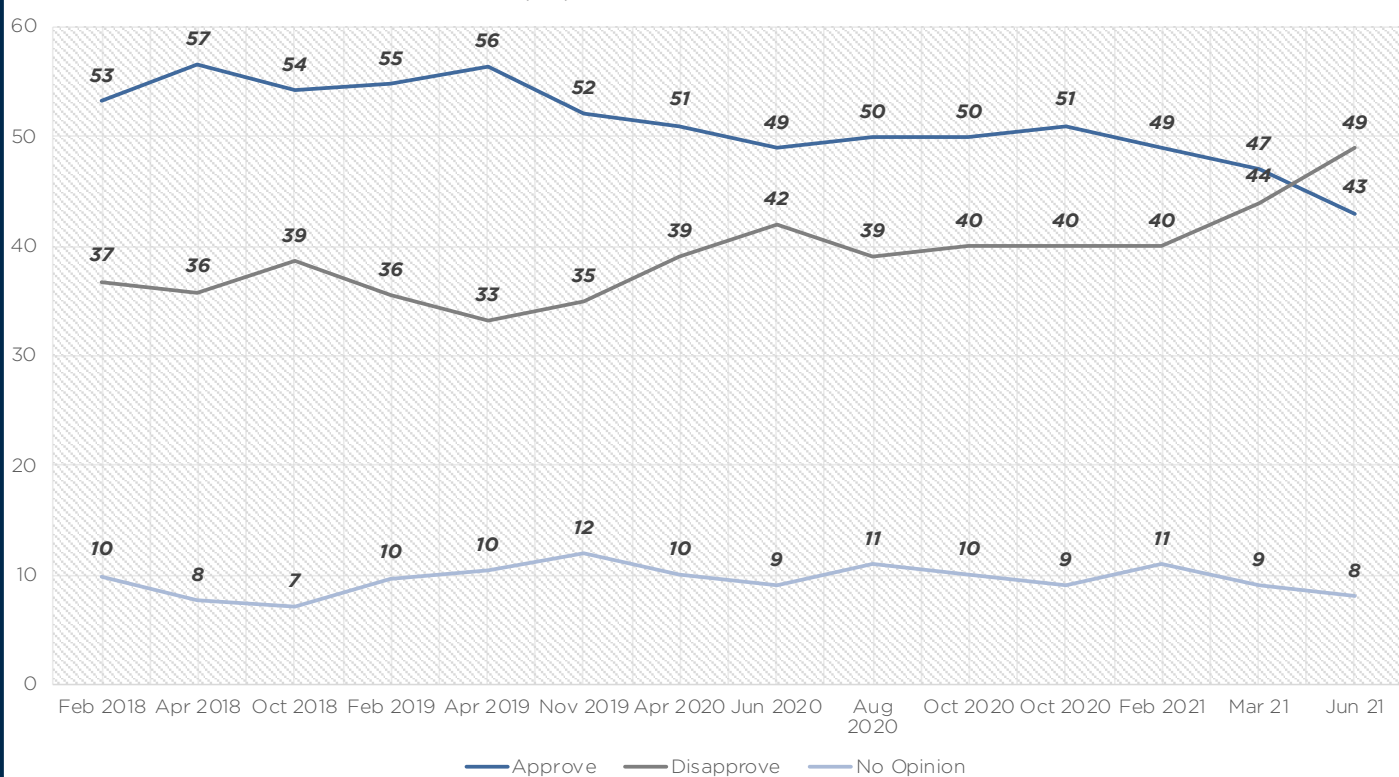
SUNUNU JOB APPROVAL (%)



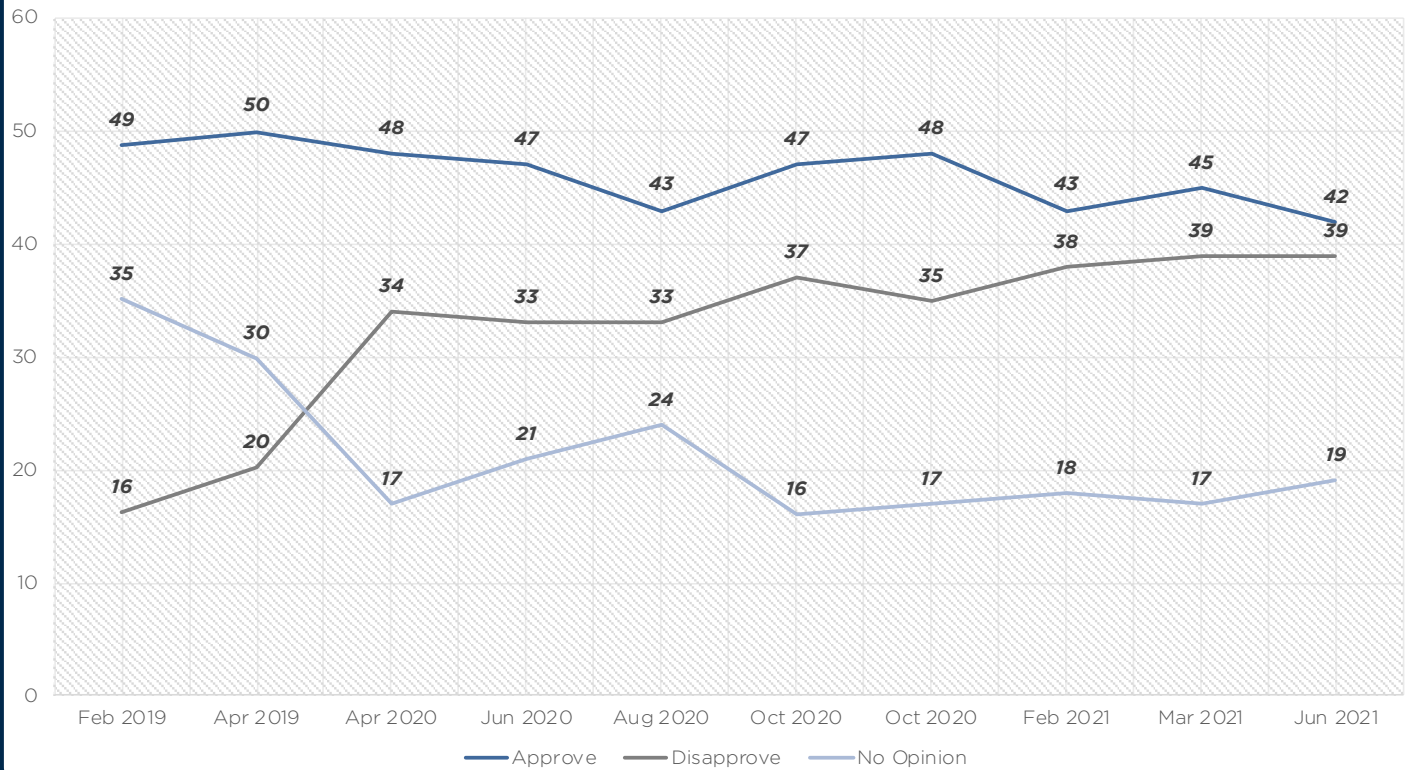
SHAHEEN JOB APPROVAL (%)



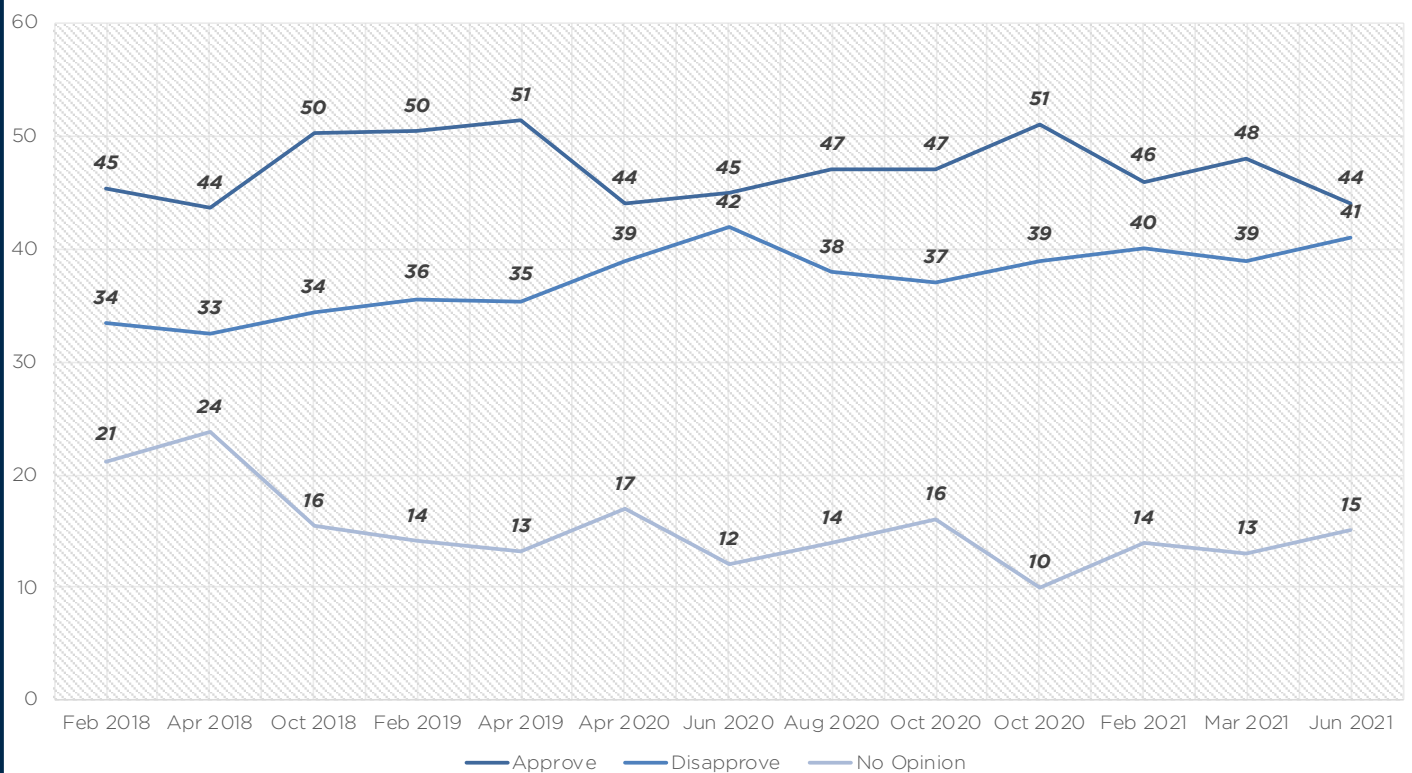
HASSAN JOB APPROVAL (%)



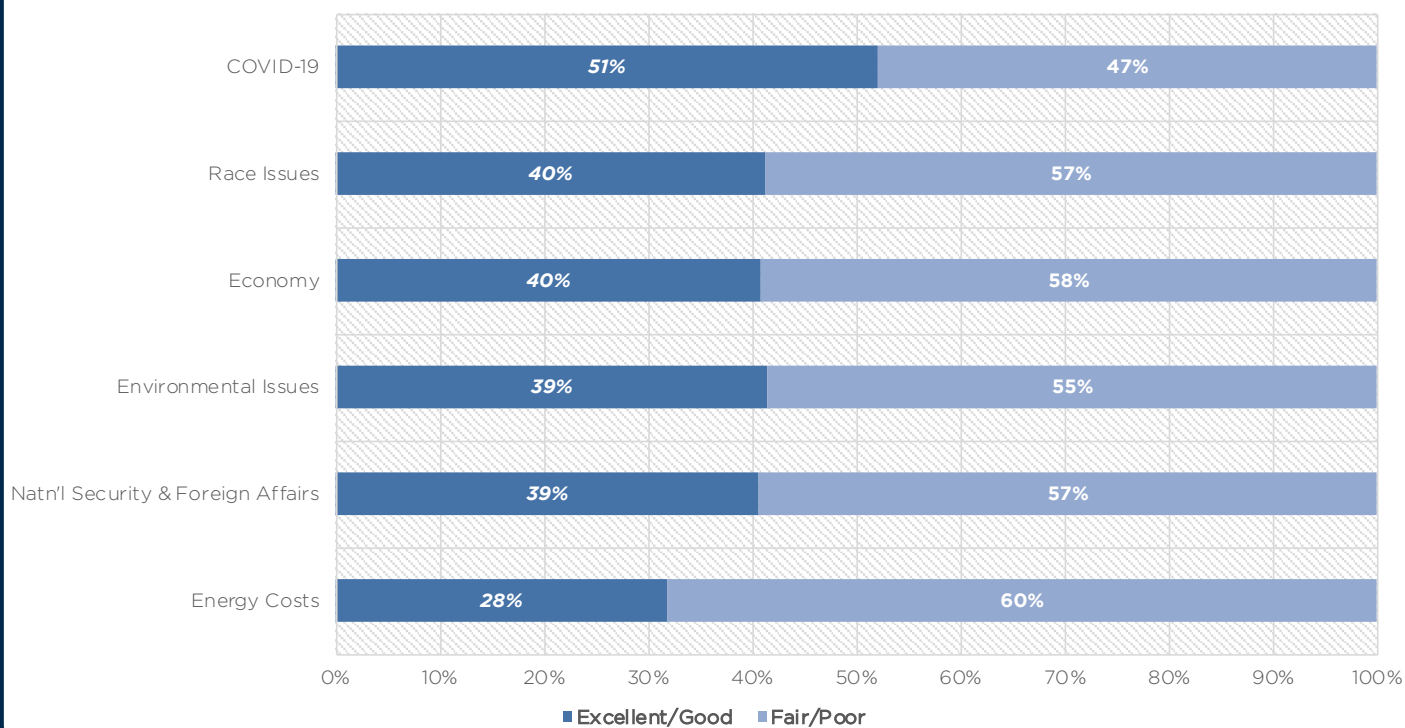
PAPPAS JOB APPROVAL (%)



KUSTER JOB APPROVAL (%)



HOW WOULD YOU RATE PRESIDENT BIDEN'S HANDLING OF EACH OF THE FOLLOWING ISSUES?



ABOUT THE SAINT ANSELM COLLEGE SURVEY CENTER

77

The Saint Anselm College Survey Center (SACSC) was founded in the wake of the 2016 election, and launched its first poll in February 2018 as the midterm elections were getting underway. Housed within the New Hampshire Institute of Politics at Saint Anselm College, the Center conducts quarterly polls of New Hampshire voter attitudes and additional polls as circumstances warrant. This research supports the academic mission of the College, and provides students with a practical education in survey techniques while providing the public at large with insight into political opinion trends that impact the state's federal and gubernatorial elections. The Center's political surveys were the most accurate New Hampshire election polling throughout the 2020 cycle. To support its operations, the Center performs commissioned research on behalf of nonprofit organizations and corporations.

For more information on SACSC, please visit:
anselm.edu/new-hampshire-institute-politics/polling

For inquiries, please contact: nhioppoll@anselm.edu